

Sunset Trading
Power Reclining-Chaise Bed
Assembly Manual



Step 1 - Remove cardboard (2 Boxes)

- a. Reclining chaise box with chaise & RAF arm with "charger"
- b. LAF arm box with "beverage"holder

RAF Arm & Chaise Back



Chaise



Zipper Pouch-Legs & Wiring



LAF Arm



Step 2 – Install legs on RAF & LAF arms (2 Legs each) & 2 legs on reclining chaise front.

Legs

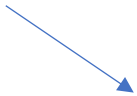


Under Side



**Step 3 – Attach RAF & LAF arms to chaise:
Slide male guides on arm to female guides on chair.**

RAF Arm



Chaise



Chair Guide



Chaise Guide



**Step 4 – Attach back piece to chaise recliner:
Slide male guides on back to female guides on chaise**



Chaise Guides

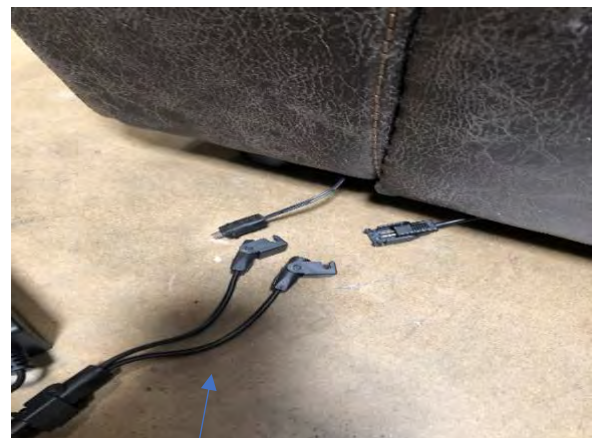


**Chaise Back
Guides**

**Step 5 – Attach electrical connection to chaise
Recliner: plug power cord to wall electrical plug**



Wire Assembly



**Connect wire assembly to arm
and chaise**

Set up instruction for the Sunset Trading Power Reclining Chaise Lounge Chair

1- Unpacking & Assembly



The Product comes in 2 Boxes, the Big box includes the chaise bed, the headboard panel & the RAF arm and the small box includes the LAF arm only.

- a- Unwrap all pieces
- b- Screw in the legs
- c- On each arm there are 2 metal brackets, consider them and then carefully slide them down to their pair piece attached to the body of the chaise-bed
- d- Connect the wireless charger power cable to the wall
- e- On the headboard panel there are 2 metal brackets as well that attaches the headboard to the chaise

2- Powering on/off

- a- Find the plug-in socket on the back of the piece and make sure it is on the off position
- b- Use the cable to connect it to 110-volt power outlet
- c- Turn on the red-key on the socket and make sure the red light is on (if not go to troubleshooting)
- d- While sitting on the chaise push the key with forward arrow sign / reclining sign to recline and backward arrow sign/closing

3- Troubleshooting

- If the red light on the back socket does not light up while it is in "ON" position make sure all the connections are not loose otherwise reach us for further assistant.
- If the red light is ON and the remote does not work, check the batteries / control wire