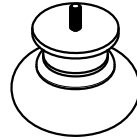


(G)

x2 Front Legs *
x2 jambes
x2 Piernas



(H)

x2 Back Legs *
x2 jambes
x2 Piernas



(A)

x2 Bolt 5/16*80mm*
x2 Boulon
x2 Perno



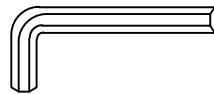
(B)

x2 Lock washer 5/16mm*
x2 Rondelle de blocage
x2 Arandela de Seguridad



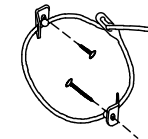
(C)

x2 Flat Washer 5/16*16mm*
x2 Rondelle plate
x2 Arandela plana



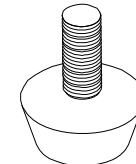
(D)

x1 Allen Wrench 73*29*5mm *
x1 Clé hexagonale
x1 Llave Allen



(E)

x1 Tipping restraint *
x1 Liste des pièces de quincaillerie antibasculément
x1 Abrazadera antivuelco



(F)

RC-FG-WHITE
x2 Adjustable leveler-White *
x2 Patin réglable
x2 Nivelador ajustable

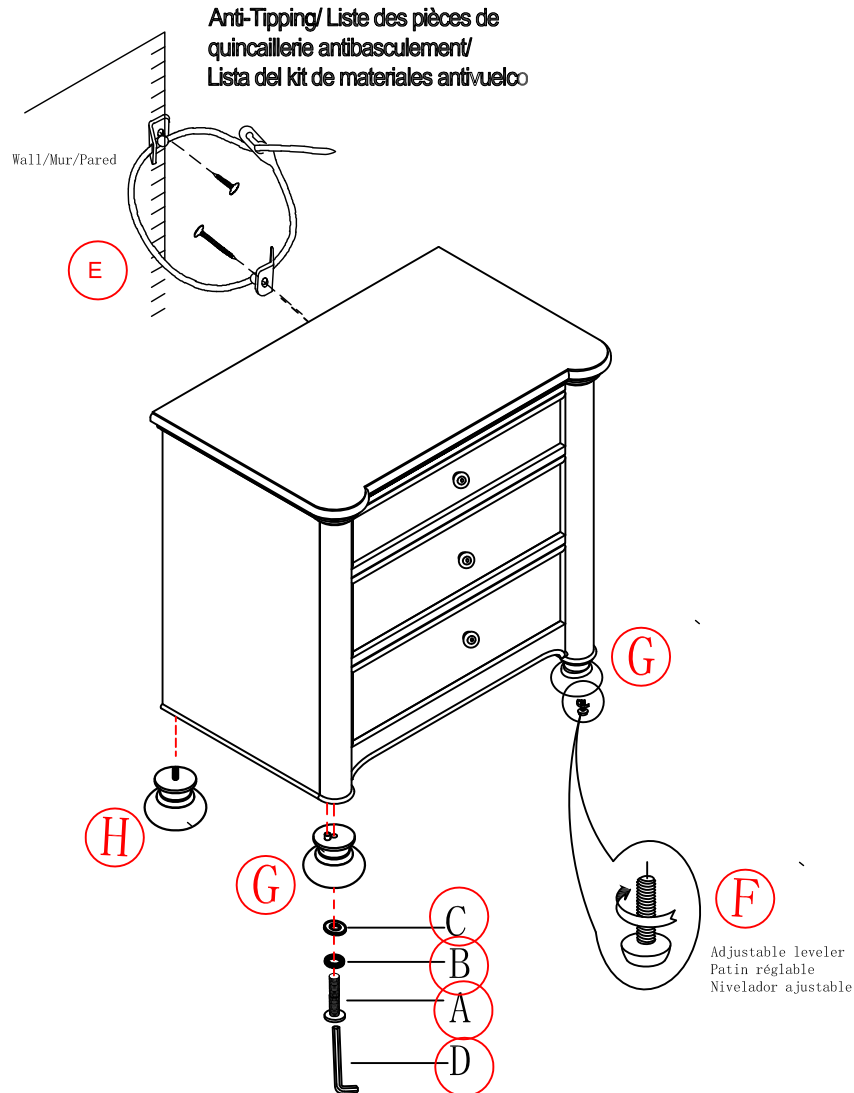
* Replaceable Part

WARNING

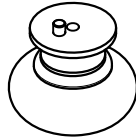
Children have died from furniture tipover. To reduce the risk of furniture tipover:

- ALWAYS install tipover restraint provided.
- NEVER put a TV on this product.
- NEVER allow children to stand, climb or hang on drawers, doors, or shelves.
- NEVER open more than one drawer at a time.
- Place heaviest items in the lowest drawers.

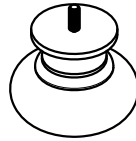
This is a permanent label. Do not remove!



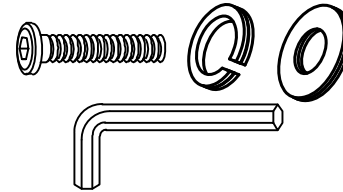
* Replaceable Part



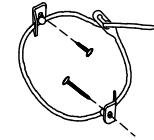
RP349100-FLEG *
x2 Front Legs
x2 jambes
x2 Piernas



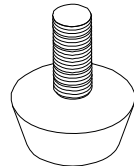
RP349100-BLEG *
x2 Back Legs
x2 jambes
x2 Piernas



x1 RP349140-HWKIT *
Hardware Kit
Liste des pièces de quincaillerie
Lista del materiales



RC-ANTI-TIP *
x1 Tipping restraint
x1 Liste des pièces de quincaillerie antibasculement
x1 Abrazadera antivuelco



RC-FG-WHITE *
x2 Adjustable leveler-White
x2 Patin réglable
x2 Nivelador ajustable



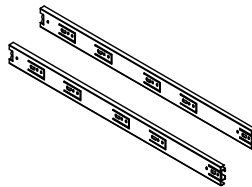
RC-WH-NAIL *
x2 Plastic Nail-White
x2 Clou en plastique
x2 Clavo de plástico



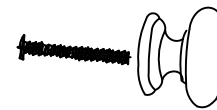
RP349140-USB *
* x1 USB Outlet
x1 Prise de courant
x1 Enchufe



RP349140-FELT *
x1 Removable Felt-Black
x1 Feutre
x1 Fieltro



COMGLIDE-10-45 *
x3 Full Extension guides 10"L x 45mmW
x3 Rails à extension complète
x3 Rieles completamente extensibles



RP349100-KNOB *
x3 Knob with screw
x3 Tirer et vis
x3 Tire y Tornillo

* Replaceable Part

Protect Your Wood or Laminate Flooring

*This statement applies to any floor without carpet.

If not careful, all furniture including upholstery and case pieces can scratch, scuff and even gouge floors. The recommendation is to have felt, rubber pads or area rugs under furniture on flooring without carpet.

Moving your furniture

Pushing and dragging furniture over floors without carpet can lead to scratches and scuffs. Have someone help when moving the larger pieces of furniture by lifting, try using a dolly or moving pads.

Felt and rubber pads

Applying furniture pads to the feet of furniture helps cushion contact points. Furniture pads can be found at local hardware stores. Felt pads slide easily across the floor, making them ideal for dining chairs and other pieces that move with use. Rubber pads will help furniture stay in place and are perfect for larger pieces, like sofas and loveseats.

Area rugs and rug pads

Using an area rug under furniture is another way to protect your floor from scratches and scuff marks. A rug pad under the area rug will provide extra cushion and added protection.