

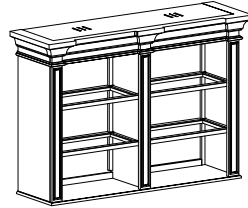
WARNING



Children have died from furniture tip-over. To reduce the risk of furniture tip-over :

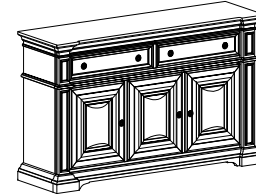
- ALWAYS install tipover restraint provided.
- NEVER put a TV on this product.
- NEVER allow children to stand, climb or hang on drawers, doors, or shelves.
- NEVER open more than one drawer at a time.
- Place heaviest items in the lowest drawers.

*This is a permanent label.
Do not remove !*



A

- x1 Server Deck
- x1 Partie supérieure de Desserte
- x1 Parte superior de Aparador



B

- x1 Server
- x1 Desserte
- x1 Aparador



C

- x4 Glass shelf *
- x4 Étagère en verre
- x4 Estante de vidrio



D

- x4 Allen Bolt Ø1/4" x 25mm *
- x4 Vis à tête creuse hexagonale Ø1/4 " x 25mm
- x4 Perno Allen Ø1/4 " x 25mm



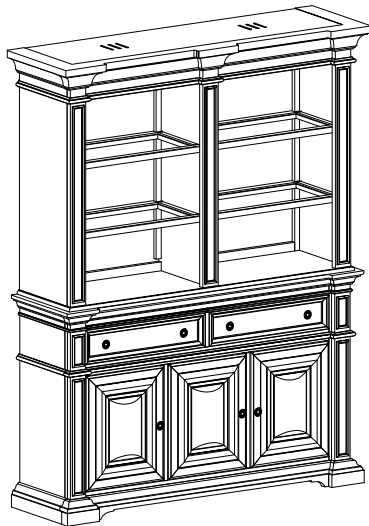
E

- x4 Lock Washer Ø1/4" *
- x4 Rondelle de blocage Ø1/4 "
- x4 Arandela de seguridad Ø1/4 "



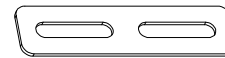
F

- x4 Flat Washer Ø1/4" *
- x4 Rondelle de plate Ø1/4 "
- x4 Arandela plana Ø1/4 "



G

- x1 Allen Key 4mm *
- x1 Clé hexagonale 4mm
- x1 Llave allen 4mm



H

- x2 Bracket *
- x2 Support
- x2 Soporte



K

- x1 Anti tipping Restraint
- x1 Liste des pièces de quincaillerie antibasculement
- x1 Lista del kit de materiales antivuelco

* Replaceable Part

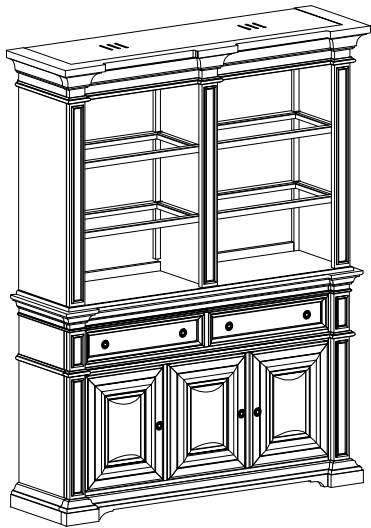
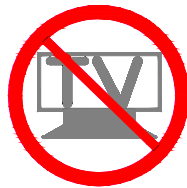
WARNING



Children have died from furniture tip-over. To reduce the risk of furniture tip-over :

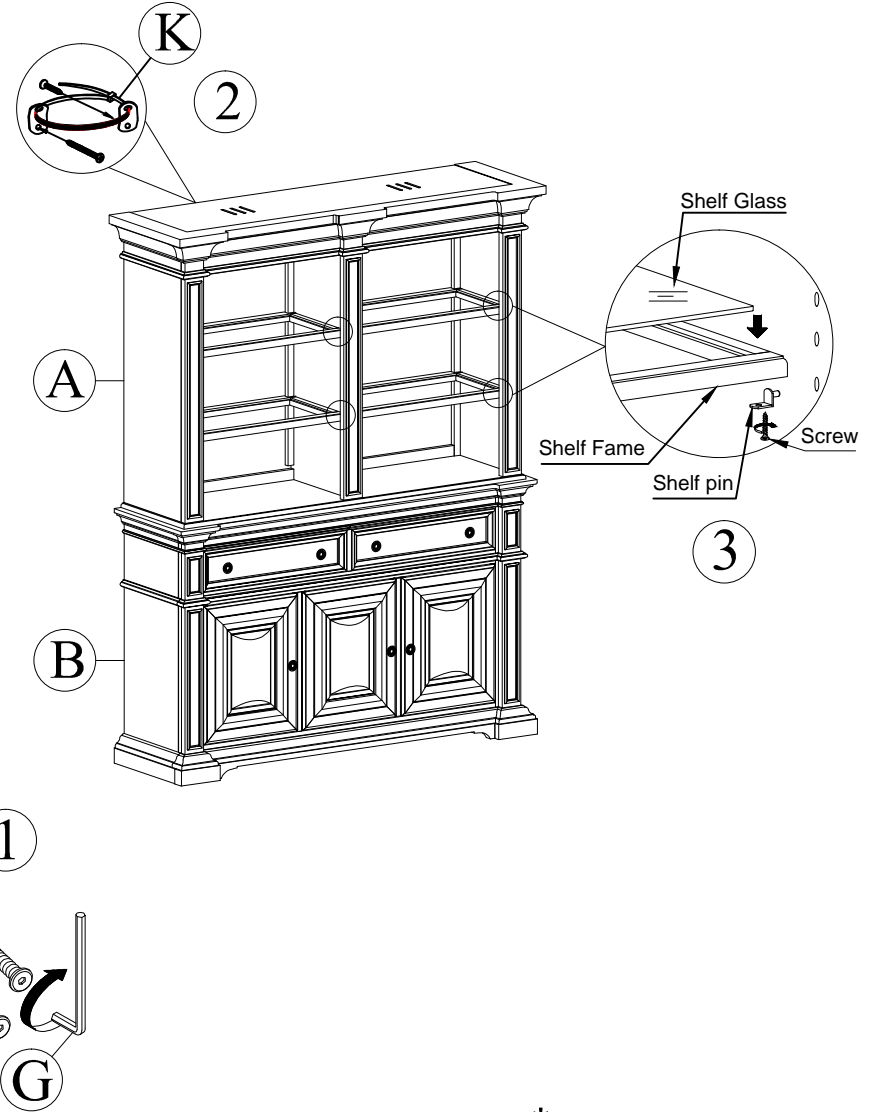
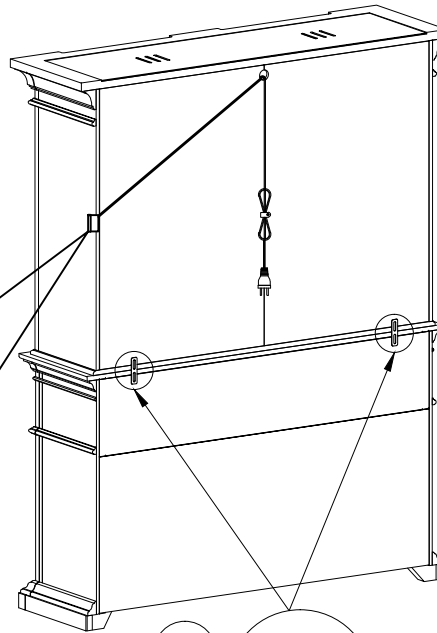
- ALWAYS install tipover restraint provided.
- NEVER put a TV on this product.
- NEVER allow children to stand, climb or hang on drawers, doors, or shelves.
- NEVER open more than one drawer at a time.
- Place heaviest items in the lowest drawers.

*This is a permanent label.
Do not remove !*



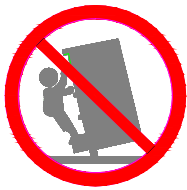
**TOUCH ME !
Button**

- Function
Touch 1: Night light
Touch 2: Energy saver light
Touch 3: Bright reading light
Touch 4: Off



* Replaceable Part

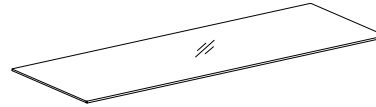
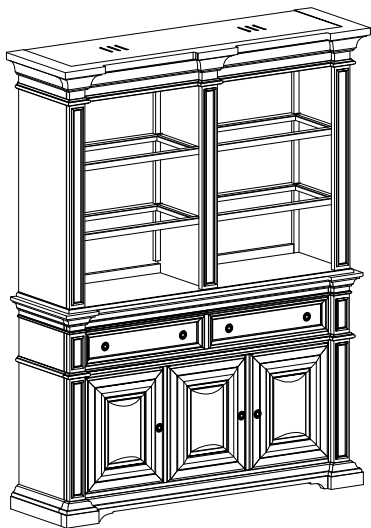
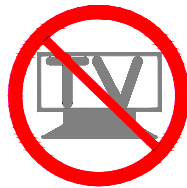
WARNING



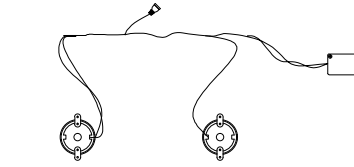
Children have died from furniture tip-over. To reduce the risk of furniture tip-over :

- ALWAYS install tipover restraint provided.
- NEVER put a TV on this product.
- NEVER allow children to stand, climb or hang on drawers, doors, or shelves.
- NEVER open more than one drawer at a time.
- Place heaviest items in the lowest drawers.

*This is a permanent label.
Do not remove !*



x4 RP351303-SHELF
Glass shelf *
Étagère en verre
Estante de vidrio



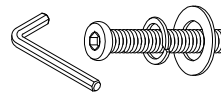
x1 RP351303-LIGHT
Light fixture w/roll switch *
lumière et interrupteur
luz y interruptor



x16 RP351100-CLIP
Shelf Clip *
Supports Pour Tablette
Soporte De Las Repisas



x2 RP351303-BRACKET
Bracket *
Support
Soporte



x1 RP351303HWKIT
Hardware Kit *
Kit de matériel
Kit de hardware



x1 RC-ANTI-TIP
Anti-tipping Restraint *
Systeme antibasculément
Control para evitar vulcos

* Replaceable Part