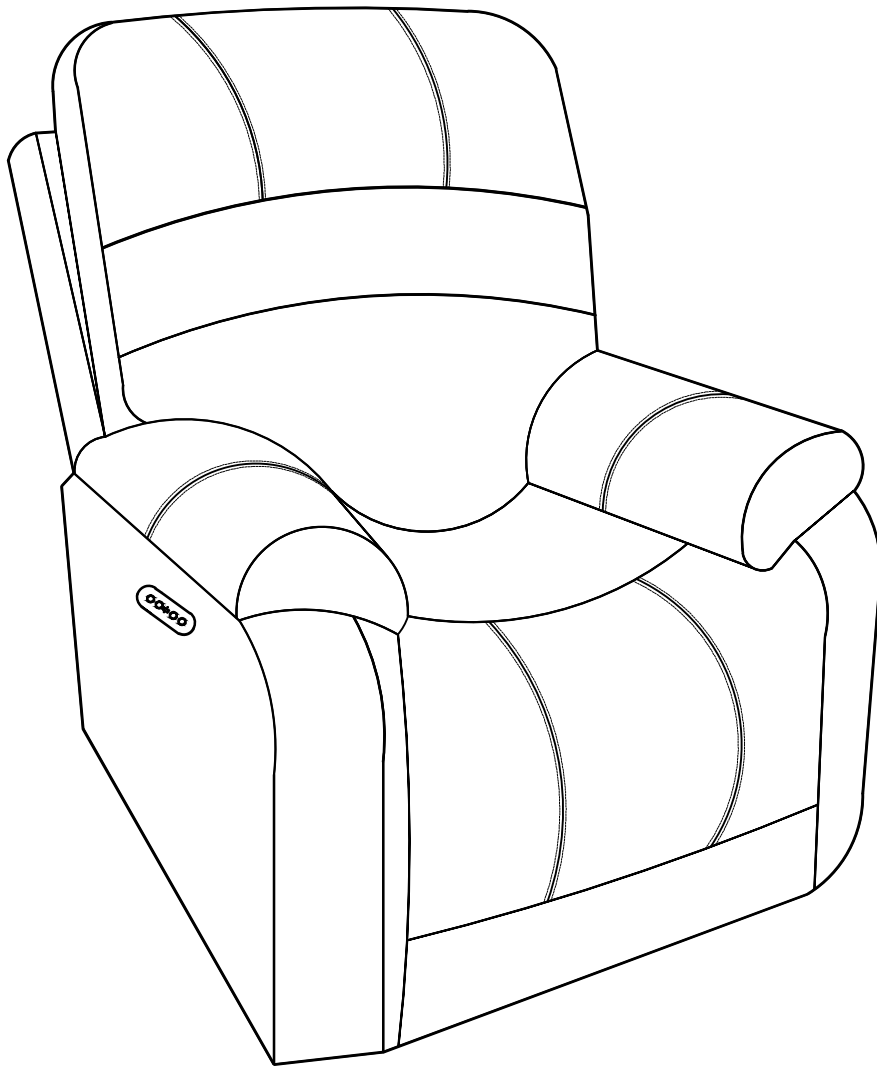


Lift Chair

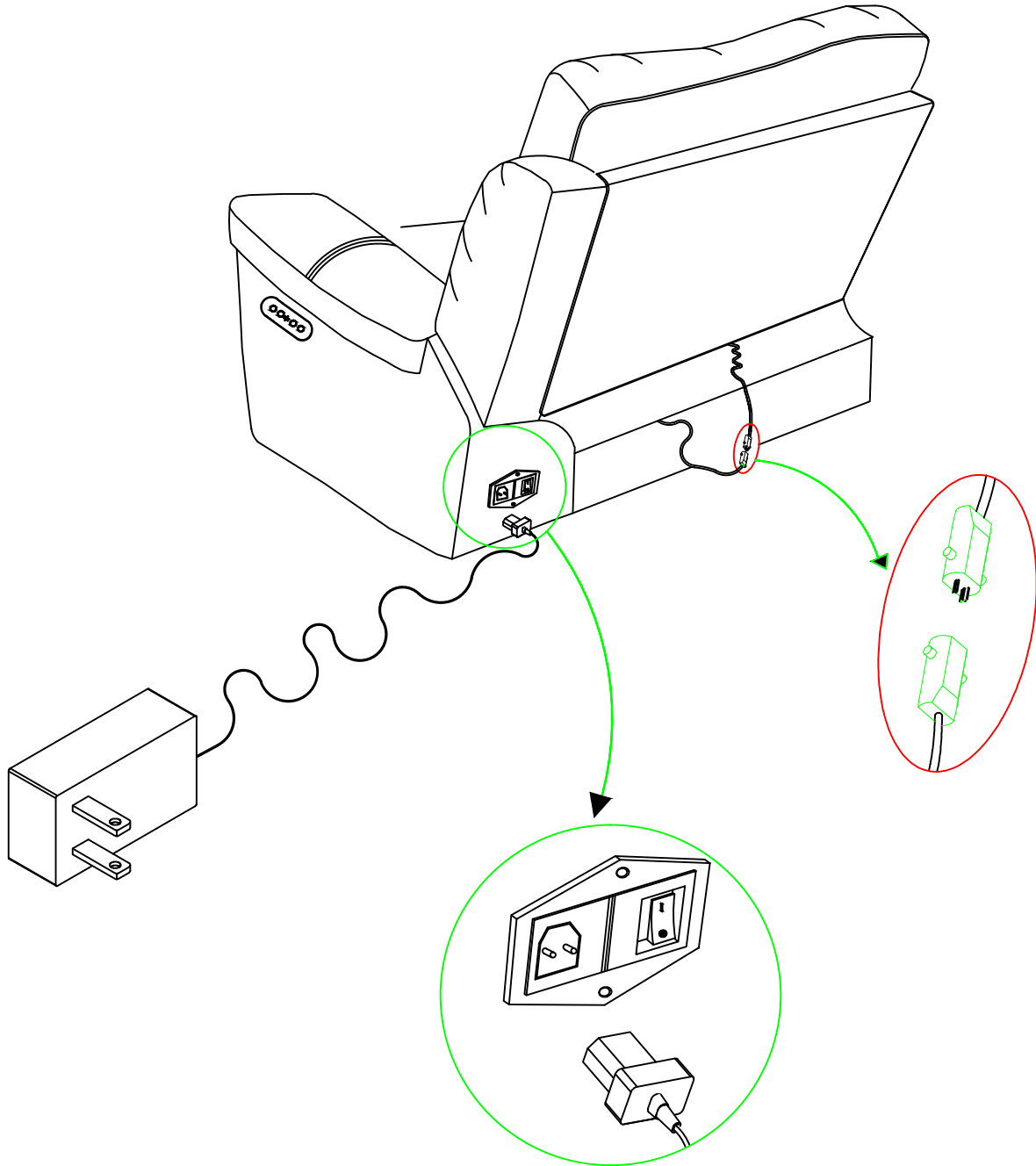
Item No. : 156-C177-005



Lift Chair

CORD AND TRANSFORMER CONNECTIONS.

FOLLOW THE STEPS BELOW:



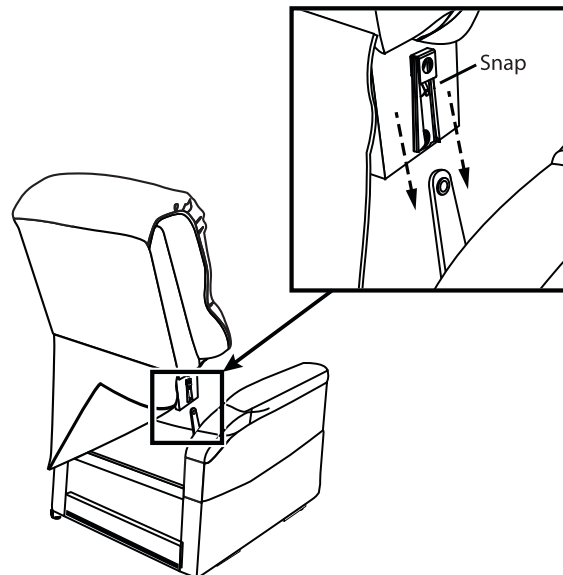
Assembly

Your lift chair requires assembly before initial use.

LIFT CHAIR SETUP

1. Align back brackets with mechanism posts.
2. Push firmly on the top of the back to lock into position. You must hear a snap from each side of the chair to ensure the back is locked in properly.
3. Attach the chair back to the hook-and-loop flaps on the bottom of the chair base.

NOTE: Pull up on the chair back to ensure that it is locked in place.



ATTACHING THE CHAIR WINGS TO THE CHAIR BACK

STEP 1: Slide the metal inserts on the chair's wings into the metal sleeves on the side of the chair back.

STEP 2: Slide the wings down until they are completely set on the back metal sleeves.

