



# **EZ-Base 2**

ASSEMBLY INSTRUCTIONS





## **STEP 1**

Open the packaging at the end where the handle is and identify the location of the upholstered frames inside the packaging.



## **STEP2**

Open the packaging after making sure the upholstered frames inside the box are on the opposite side to avoid damaging the material.



## **STEP3**

Remove all pieces from the packaging and make sure there is nothing left inside the carton before disposing of it. Please pay attention to any small hardware that could have come loose.



## **STEP 4**

Remove the components from the protective material and place them on a ***clean, flat and levelled surface***, this is important.

The box should contain the following pieces:

2x Side frames (A)

1x Cover (E)

1x Hardware (F)  
pack

15x Slats (D)

\*2x End frames (B)\*



*\*Note; One end frame is for the foot side(without holes);  
the other end frame is for the head side (it has 4 holes for attaching the headboard brackets)*

### ***Important:***

***Depending on the size of the platform base you purchased, your carton will contain:***

**Twin & Full:** No center rail (C)

**Queen:** 1x Center rail (C)

**King & CA King:** 2x Center rail (C)

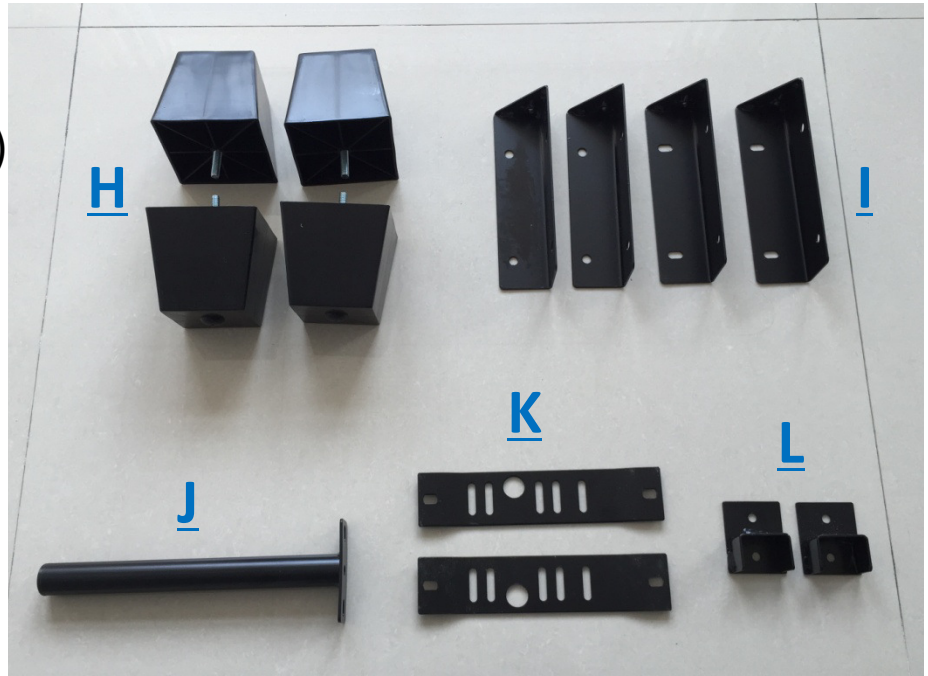
## **STEP 5**

Identify the content of the Hardware pack (F):

4x Legs (H)

4x Corner brackets (I)

2x Headboard  
bracket (K)



### ***Important:***

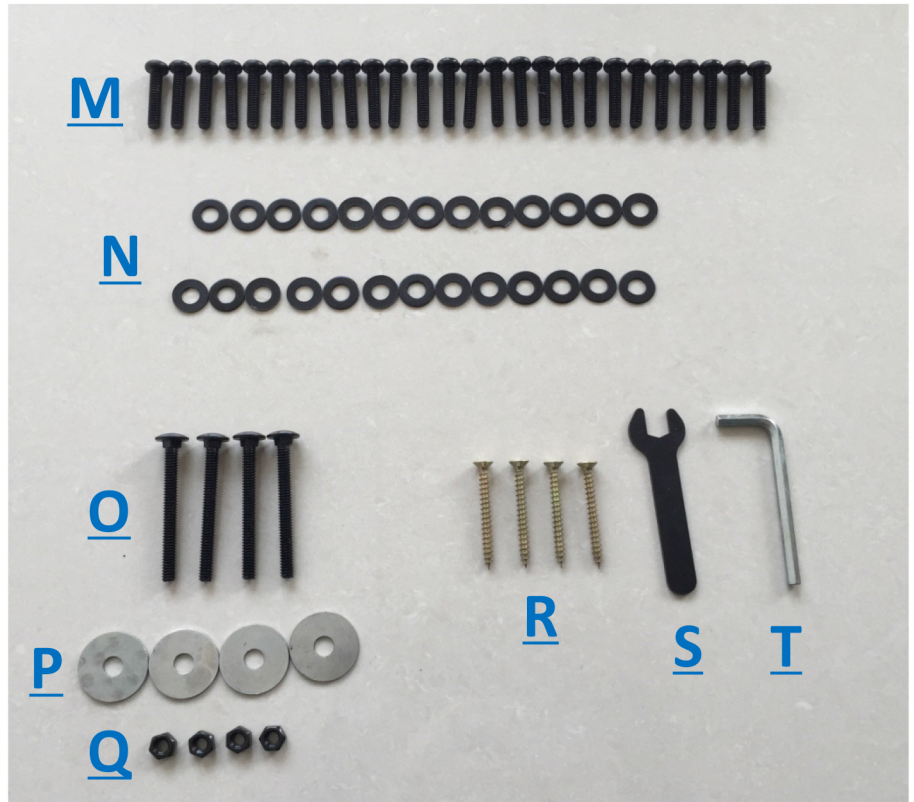
***Depending on the size of the platform base you purchased***

**Twin & Full:** No support leg (J) or Center rail bracket (L)

**Queen:** 1x support leg (J) and 2x Center rail bracket (L)

**King & CA King:** 2x support leg (J) and 4x Center rail bracket (L)

- 4x Carriage bolts (O)
- 4x Flat washers (P)
- 4x Nuts (Q)
- 2x Wood screws (R)
- 1x Spanner (S)
- 1x Allen key (T)



***Important:***

***Depending on the size of the platform base you purchased***

**Twin & Full:** 20x Bolts (M) and Washer (N)

**Queen:** 26x Bolts (M) and Washer (N)

**King & CA King:** 32x Bolts (M) and Washer (N)

**IMPORTANT NOTE**

***Do not use a power tool*** to assemble this product as it could damage the thread of the hardware and affect the solidity/durability of the product.

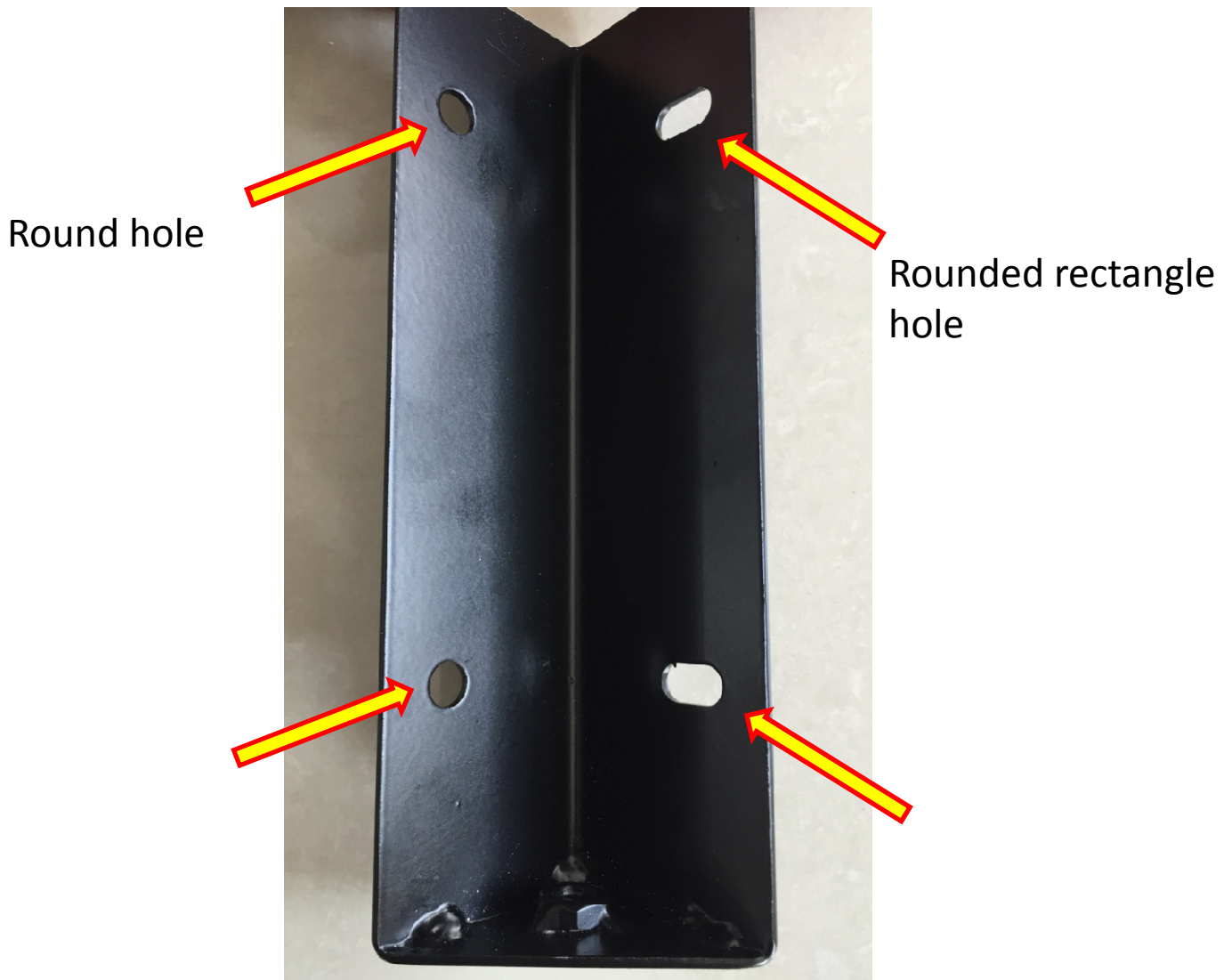


## **STEP 6**

Now that you have identified all components, we can start the assembly process but first, pay close attention to the following detail:

### **IMPORTANT NOTE**

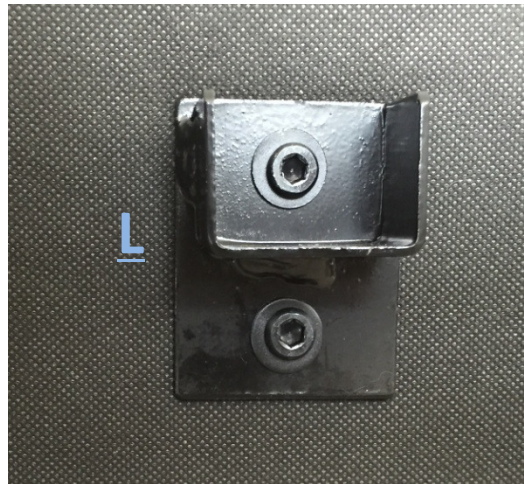
The corner brackets are fitted with ***round holes*** and ***rounded rectangle holes***. The round holes must be used to attach the bracket to the Side Frames (A) and the rounded rectangle holes used to attach the bracket to the End frames (B)



## **STEP 7**

### **FOR QUEEN AND KING SIZES ONLY**

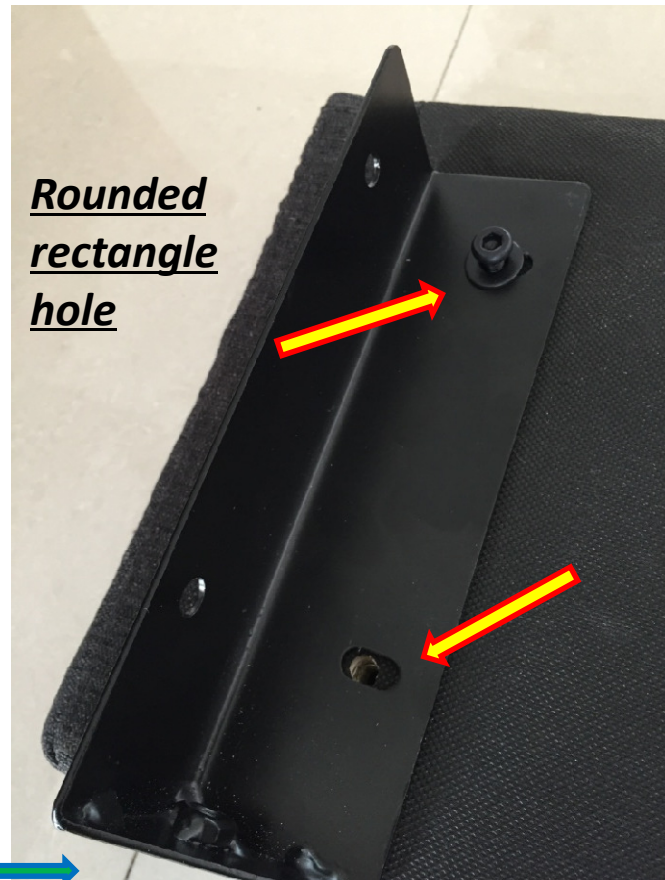
Use the bolt (M) and washer (N) to attach the center rail bracket (L) to the end frames (B). The bracket must be installed upward as illustrated below. Adjust the brackets to be straight and level against the top of the frame and tighten using the Allen key (T)





## STEP 8

Attach the 4 corner brackets (I) to the 2 end frames (B) with the bolts (M) and washers (N) using the ***rounded rectangle holes***. Do not fully tighten the bolts at this stage, leave them loose.



The bottom of the corner bracket is fitted with a plate where the legs will attach on. Insure to position the bracket so the plate is at the same level to the bottom of the frame.



## **STEP 9**

Attach the side frame (A) to the end frame (B) using bolts (M) and washers (N)

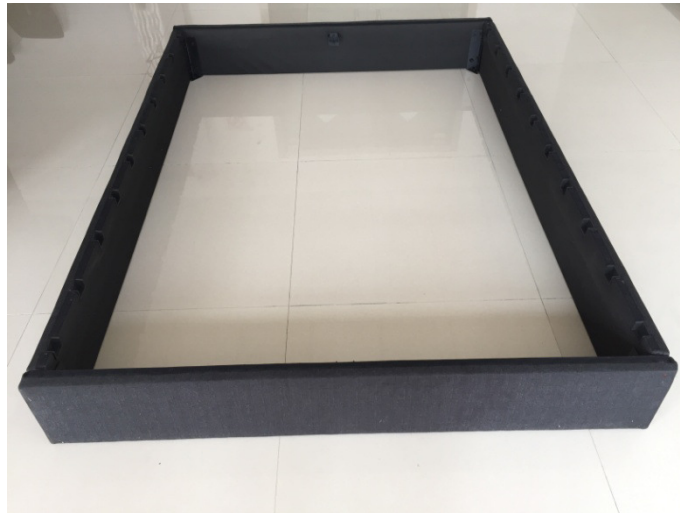


Leave the bolt loose,  
do not tighten at this  
stage of the assembly



## **STEP 10**

Complete attaching all frames but leave all bolts loose



## **STEP 11**

Adjust each corner so the end on the side frame (A) correctly lines up with end of end frame (B) then tighten the bolts.



## **STEP 12**

Put the frame on its side and attach the legs (H) to the corner brackets base



Once all 4 legs have been attached, please re-check that all bolts are evenly tighten.



## **STEP 13**

### **FOR QUEEN AND KING SIZES ONLY**

Take the center rail (C) and the support leg (J).  
Locate the attachment screws on the center rail



Attach the support leg (J) to the center rail (C) using the bolts (M) and washers (N). **VERY IMPORTANT**, the bolts must be attached from the opposite side of where the attachment nut is flush against the rail.



This is the wrong side.



Correct side to attach the support leg

## **STEP 14**

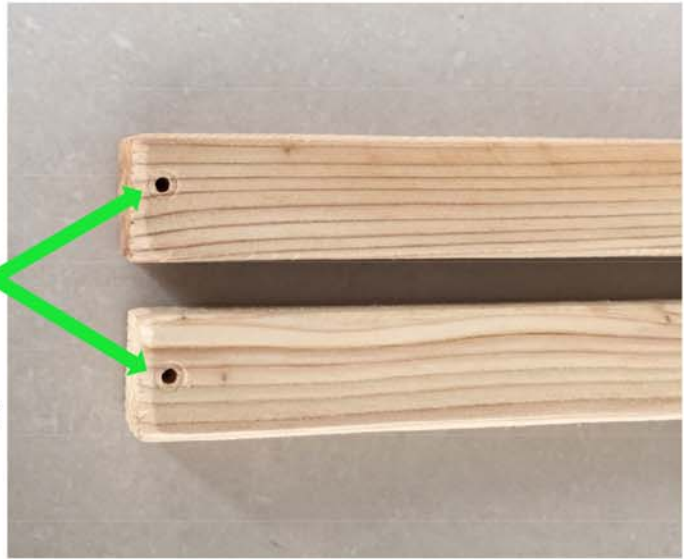
**FOR QUEEN AND KING SIZES ONLY**

Once the support leg is attached to the center rail, place the center rail in the center rail brackets.



## **STEP 15**

2 of the wooden slats (D) are fitted with holes which will be used to attach them to the side frames. Those 2 slats are to be placed in the center of the base as illustrated below.



Use a Phillips (star head) screw driver to attach the 2 middle slats to the side frames using the wood screws (R)



Your new platform base can now be covered.





## **LAST STEP**

Use the cover (E) to recover the frame and voila, your new platform base is ready for use.

# ENJOY



## **OPTIONAL STEPS FOR HEADBOARD**

Should you decide to use your new platform base with a headboard, the required hardware is already provided with the pack you received.

### ***1<sup>st</sup> STEP:***

Take the headboard bracket (K) provided with the hardware pack of your base and identify which holes on the bracket corresponds to the attachment holes on your headboard.

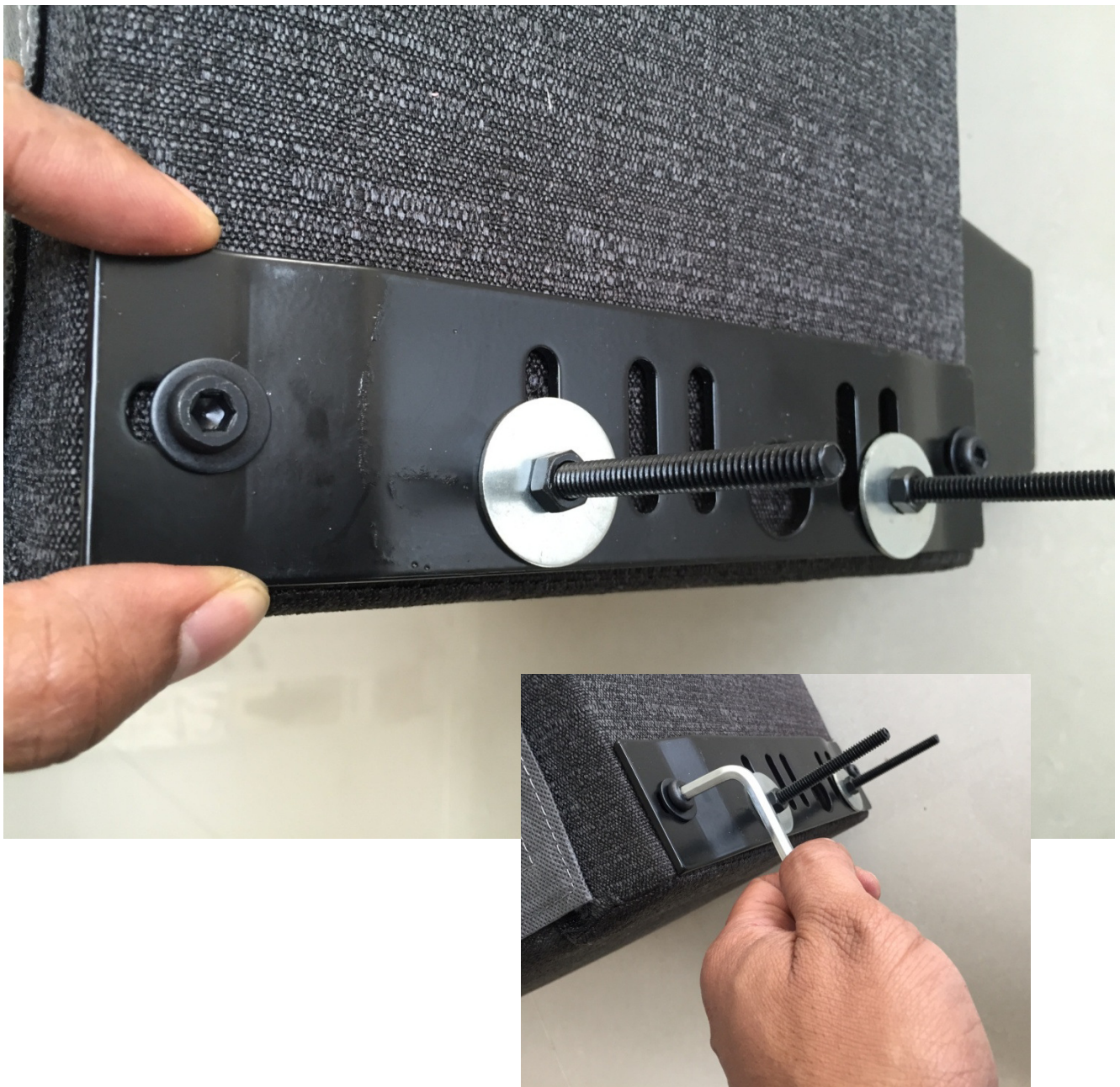
### ***2<sup>nd</sup> STEP:***

Once you have identified the matching holes, put 1 carriage bolt (O) in each matching hole (*In the illustration below, the washer (P) and nut (N) are used to keep the carriage bolts in place only*)



### **3<sup>rd</sup> STEP:**

Attach the headboard bracket (K) to the end frame (B) that is already fitted with pre-drilled holes using the bolts (M) and washers (N). Adjust the height of the bracket by sliding it up or down. Once at the desired height, make sure the bracket is straight and tighten the bolts.



**4<sup>th</sup> STEP:**

You can slide the carriage bolts side-to-side to fit into the headboard attachment holes after removing the nut and washer.



Once the headboard (*not Illustrated*) is in place, use the spanner (S) to tighten it to the headboard brackets using the Washers (P) and nuts (Q).



**ENJOY**