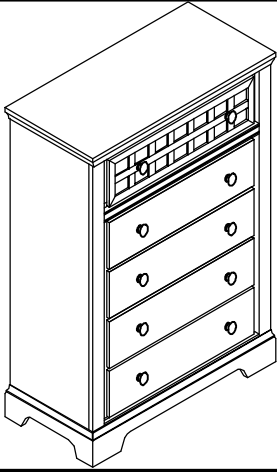


# ASSEMBLY INSTRUCTION

Item No : P107-14

Description : CHEST



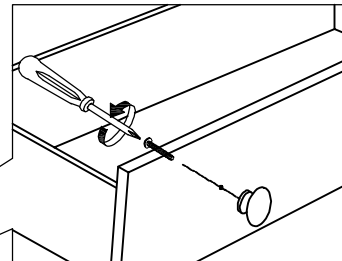
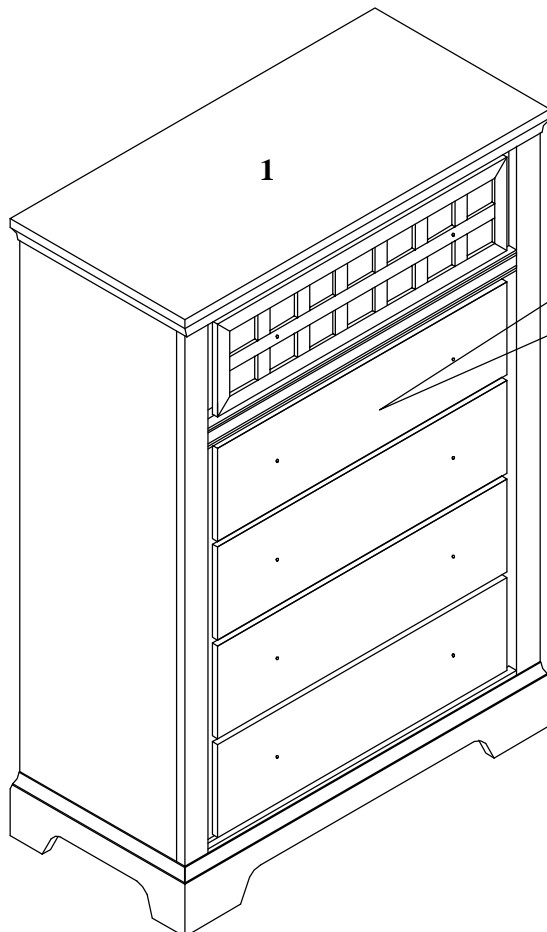
## IMPORTANT NOTE :

- Place all wooden parts on a clean and smooth surface such as a rug or carpet to avoid the parts from being scratched.
- Check to be sure that you have all parts and hardware.
- Remove all wrapping materials, including staples & packing straps before you start to assemble.
- Do not tighten all screws / bolts until all completely assembled.
- Keep all hardware parts out of reach of children.

PARTS LIST		
NO	DESCRIPTION	QTY
1	CHEST	1PC

HARDWARE LIST		
NO	DESCRIPTION	QTY
A	METAL KNOB HANDLE	10PCS
B	SCREW 5/32 X 25mm	10PCS

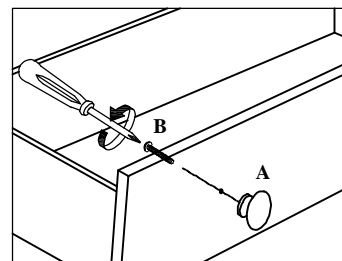
**NOTE :** YOU WILL ALSO NEED A PHILIP SCREW DRIVER (NOT PROVIDED)



Re assembled knob handle from inside to outside position.

### OPTIONAL :

IF WANT TO USE METAL KNOB HANDLE.



Remove the wooden knob and change to metal knob handle.