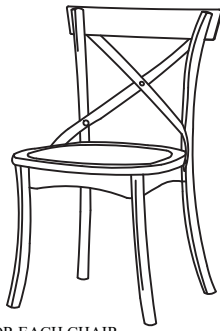


Progressive® ASSEMBLY INSTRUCTION

furniture Item No: D547-61

Description: DINING CHAIR - X BACK



IMPORTANT NOTE :

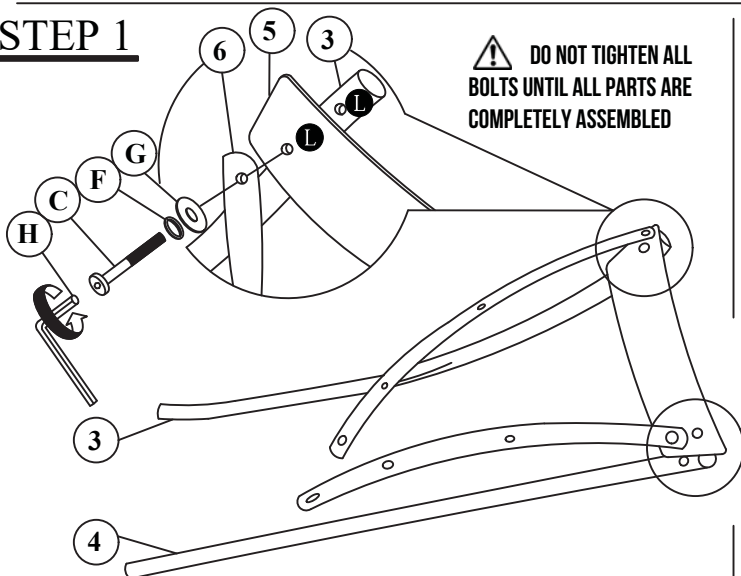
- Place all wooden parts on a clean and smooth surface such as a rug or carpet to avoid the parts from being scratched.
- Check to be sure that you have all parts and hardware.
- Remove all wrapping materials, including staples & packing straps before you start to assemble.
- Do not tighten all screws/bolts until all completely assembled.
- Keep all hardware parts out of reach of children.

▲ PARTS FOR EACH CHAIR

PARTS LIST			
NO.	COMPONENT		QTY.
1	CHAIR SEAT		1 PCS
2	FRONT LEG		2 PCS
3	REAR LEG - L		1 PCS
4	REAR LEG - R		1 PCS
5	REAR CAP RAIL		1 PCS
6	METAL BRACE		2 PCS

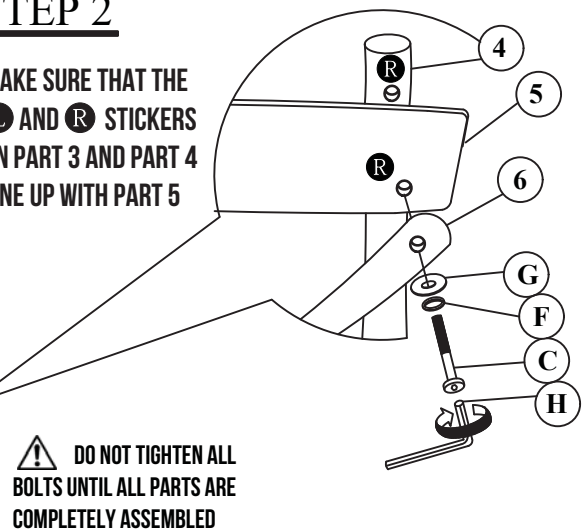
HARDWARE LIST			
NO.	DESCRIPTION		QTY.
A	M6 x 10MM JCBC BOLT		1 PCS
B	M6 x 20MM JCBC BOLT		4 PCS
C	M6 x 35MM JCBC BOLT		2 PCS
D	M6 x 70MM JCBC BOLT		8 PCS
E	M6 HEX NUT		1 PCS
F	M6 x 13MM SPRING WASHER		14 PCS
G	M6 x 19MM FLAT WASHER		15 PCS
H	M4 x 60MM ALLEN KEY		1 PCS

STEP 1

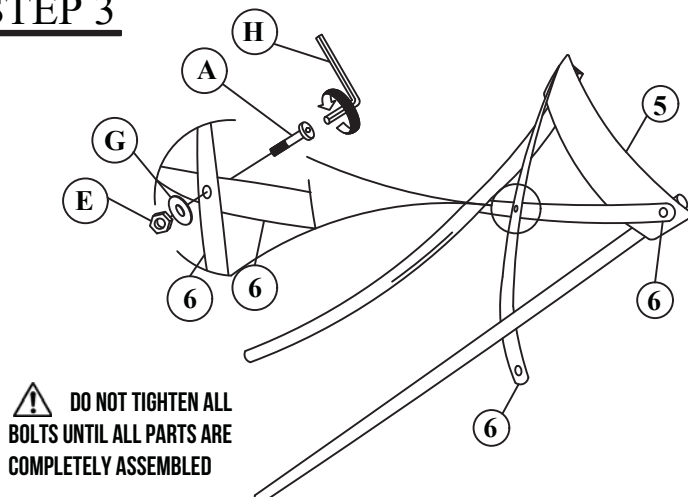


STEP 2

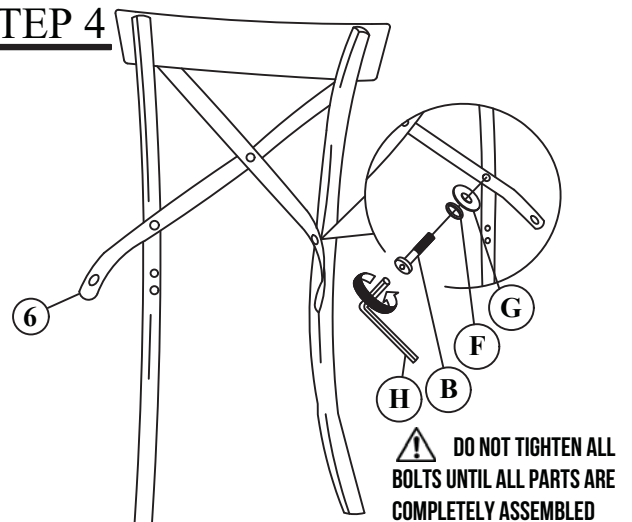
MAKE SURE THAT THE **L** AND **R** STICKERS ON PART 3 AND PART 4 LINE UP WITH PART 5



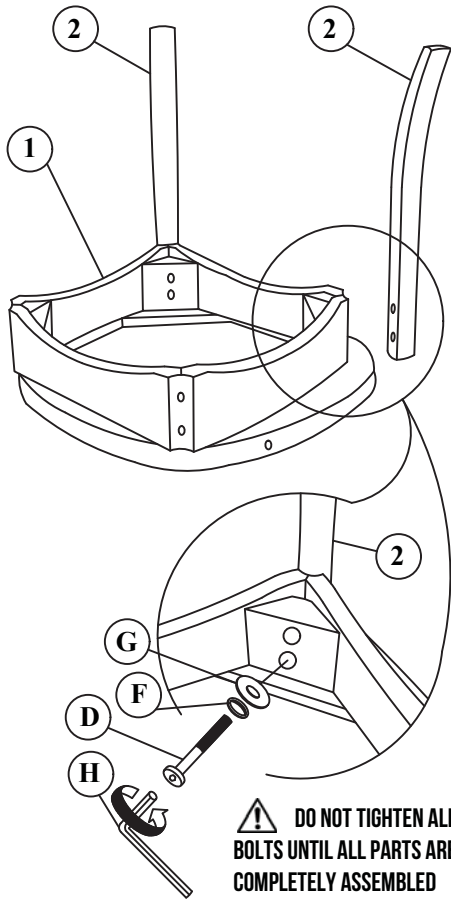
STEP 3



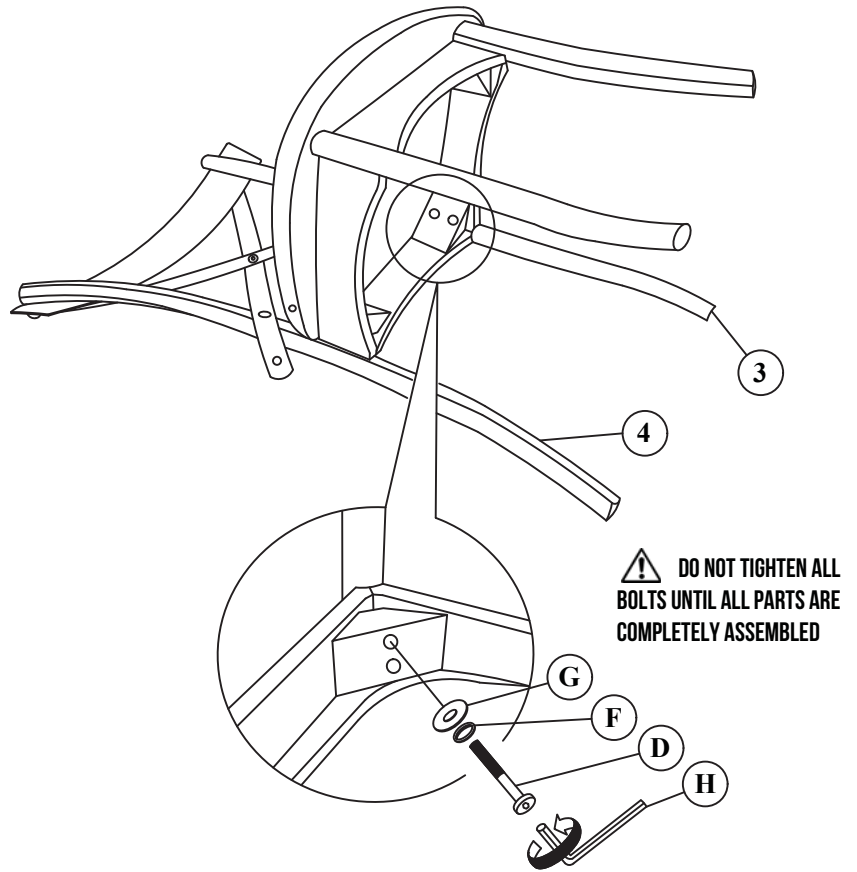
STEP 4



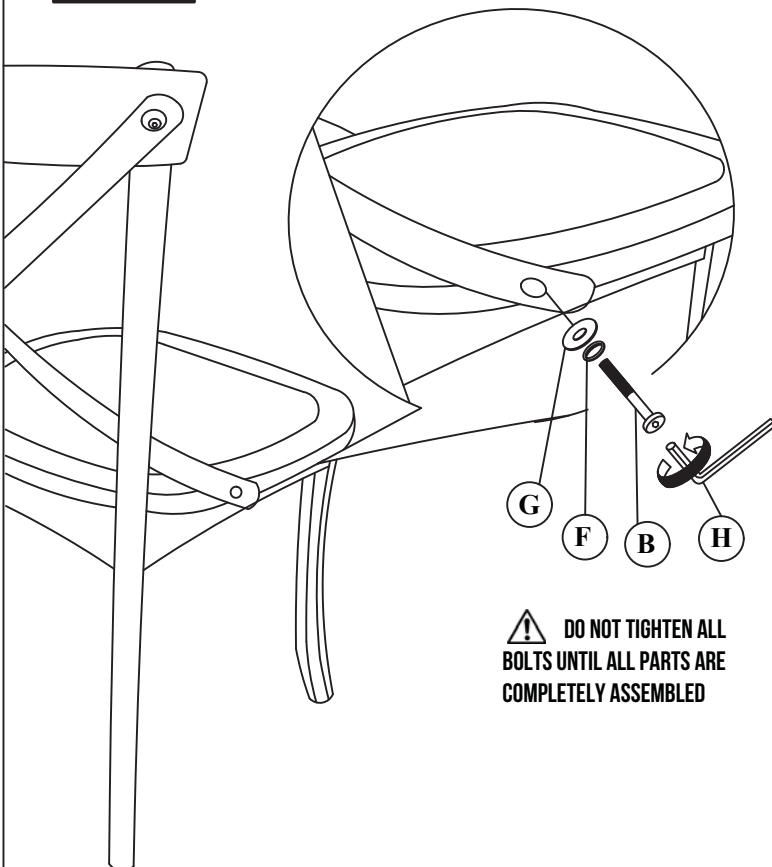
STEP 5



STEP 6



STEP 7



STEP 8

