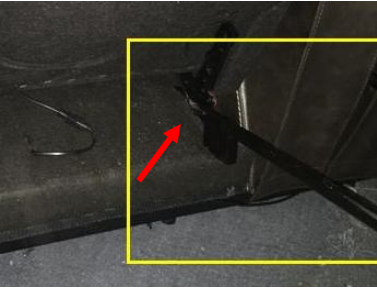


Remove the back

- 1 Disconnect the cord which connects the motor and the back

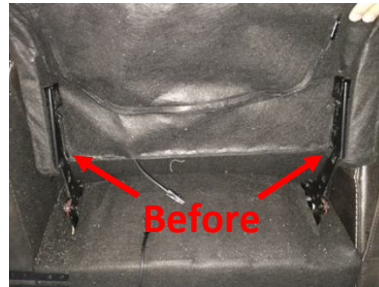


- 2 When taking out the back, use a tool to help pull out to reduce the damage on the buckle. Pull out both sides at the same time at the same angle to avoid damage.



Install/Assemble the back

- 1 When installing the back, slide the buckle down onto the bottom portion. Install the buckle both sides at the same time at the same angle.



- 2 Connects the cord and test

