



Assembly Instruction

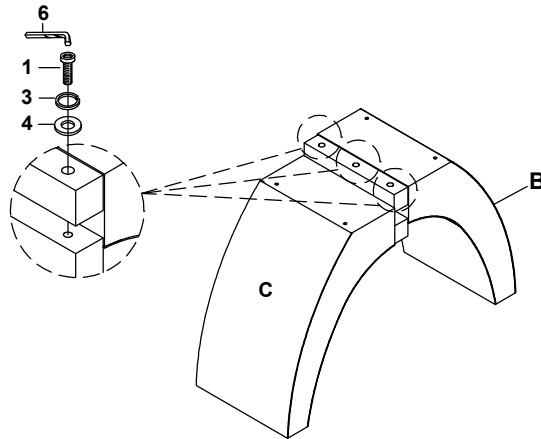
LYRA DINING TABLE

D3765-10B LYRA PEDESTAL BASE

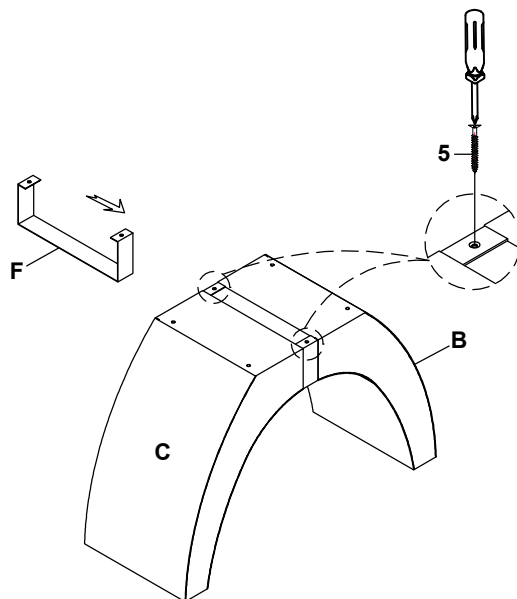
D3765-10T LYRA DINING TABLE TOP AND BASE BOTTOM

| PARTS LIST | | | | HARDWARE LIST | | | |
|------------|-----------------------------------|--------|------|---------------|----------------------------|--------|------|
| No. | DESCRIPTION | SKETCH | Q'TY | No. | DESCRIPTION | SKETCH | Q'TY |
| A | TABLE TOP | | 1 | 1 | ALLEN BOLT (5/16" x2-1/2") | | 3 |
| B | LEFT SIDE FACING (LSF) TABLE LEG | | 1 | 2 | ALLEN BOLT (5/16" x1-3/8") | | 20 |
| C | RIGHT SIDE FACING (RSF) TABLE LEG | | 1 | 3 | SPRING WASHER (5/16 ") | | 23 |
| D | TABLE BASE | | 1 | 4 | FLAT WASHER (5/16 ") | | 23 |
| E | TABLE TOP CONNECTION PLATE | | 2 | 5 | SCREW M4*1" | | 2 |
| F | TABLE LEG CONNECTION WRAP | | 1 | 6 | ALLEN KEY M5 | | 1 |

STEP 1: Place the TABLE LEGS (B & C) upside down on a soft and clean surface. Assemble the LSF TABLE LEG (B) and the RSF TABLE LEG (C) by using ALLEN KEY (6) with hardware 1, 3, and 4.

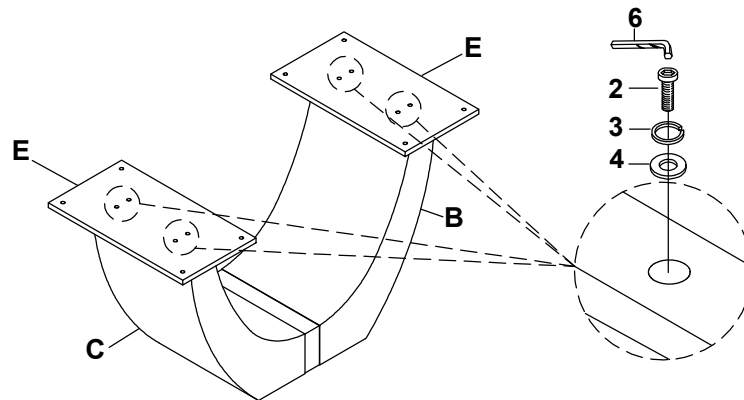


STEP 2: Assemble the TABLE LEG CONNECTION WRAP (F) to the center of the TABLE LEGS (B & C) by using a screwdriver with hardware 5.

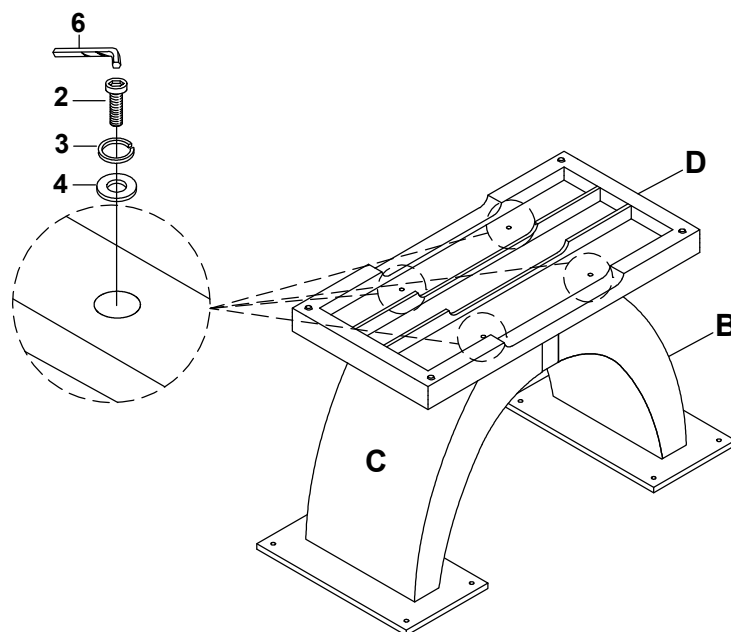


MADE IN VIETNAM

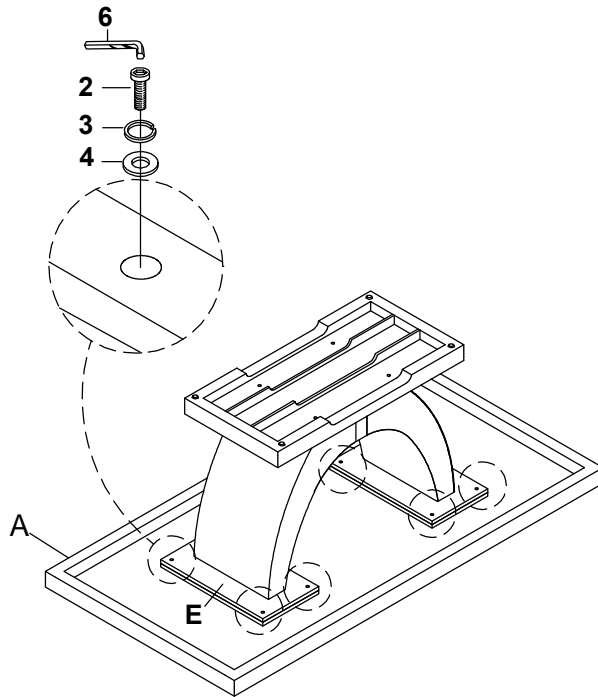
STEP 3: Turn the assembled bottom piece right side up. Assemble the TABLE TOP CONNECTON PLATE (E) to the TABLE LEGS (B & C) by using ALLEN KEY (6) with hardware 2, 3, and 4.



STEP 4: Turn the assembled bottom piece upside down. Assemble the TABLE BASE (D) by using ALLEN KEY (6) with hardware 2, 3, and 4.



STEP 5: Assemble the bottom piece with the TABLE TOP (A) by using ALLEN KEY (6) with hardware 2, 3, and 4.



STEP 6: To level the table, place the table right side up on a flat surface and adjust the levelers.

