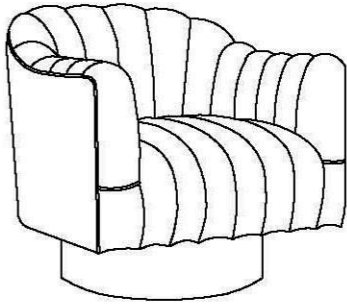


ASSEMBLY INSTRUCTIONS

meridian.
furniture

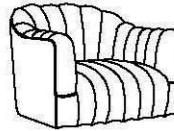
SKU-519/520

SIZE: 32.75" *31" *31"



+ Parts Included

①



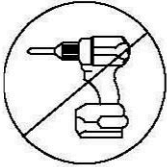
Seat

②

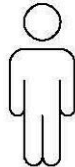


Base

+ Do Not Use Power Tools



+ Suggested Adults



NOTE: For questions about parts or assembly please email support@meridianfurnitureusa.com or call us at 718-758-4455.

1. Read instructions cover to cover.
2. Save all packaging until assembly is completed.

1 IMPORTANT SAFETY INFORMATION

Do not assemble the product if any of the following parts arrived damaged:

- Part 1 - Seat
- Part 2 - Base





Do not assemble if any of the following Hardware parts are missing:

- Part A - Allen Key
- Part B - Bolt
- Part C - Lock Washer
- Part D - Washer

2 IMPORTANT ASSEMBLY INFORMATION

Assembly Step If loosening persists, please make sure to tighten all the bolts periodically, or use a thread locker adhesive.

+ Hardware Included

A		1PC	Allen Key M5mm
B		4PCS	Bolt $\phi 5/16"$ *1-1/2"
C		4PCS	Lock Washer $\phi 5/16"$
D		4PCS	Washer $\phi 5/16"$ *22mm

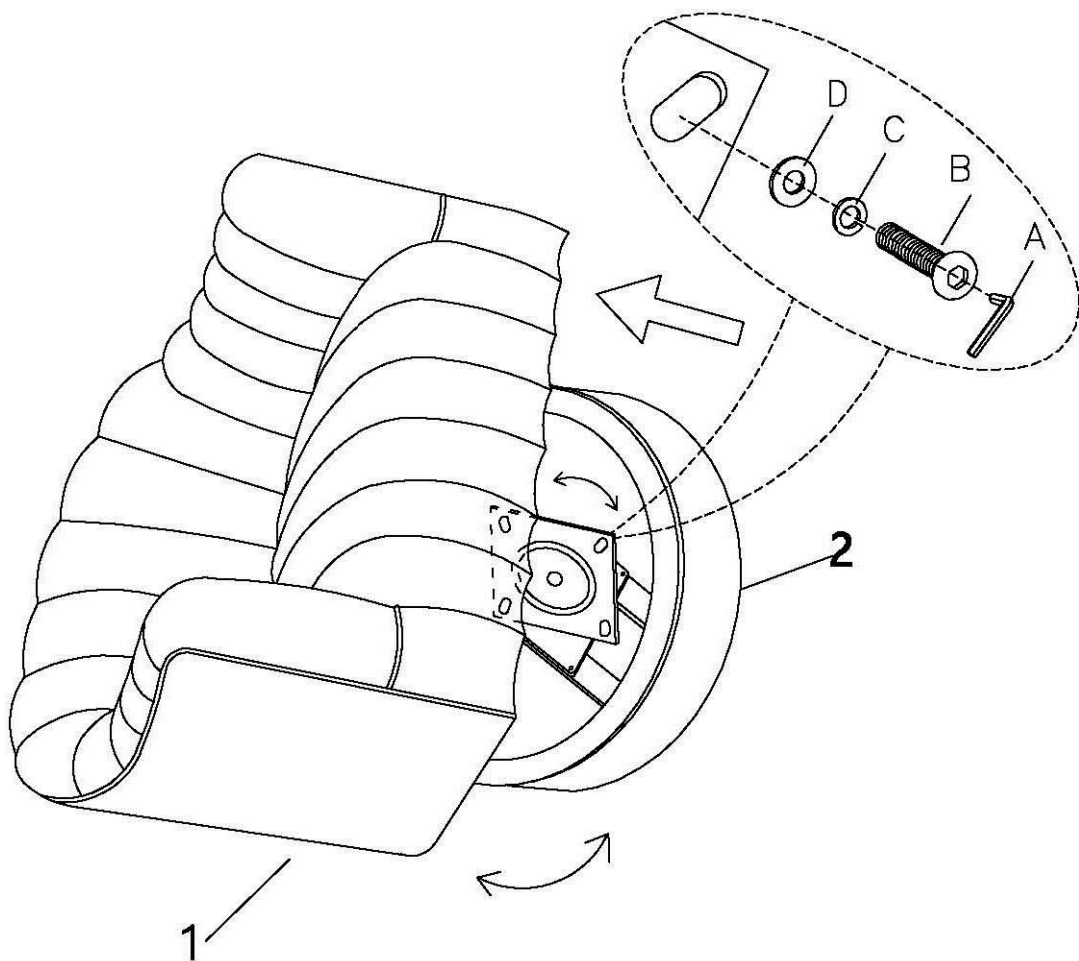
ASSEMBLY INSTRUCTIONS

meridian.
furniture

SKU-519/520

SIZE: 32.75" * 31" * 31"

STEP 1



NOTE: For questions about parts or assembly please email
support@meridianfurnitureusa.com or call us at 718-758-4455.

www.MeridianFurnitureUSA.com | support@meridianfurnitureusa.com