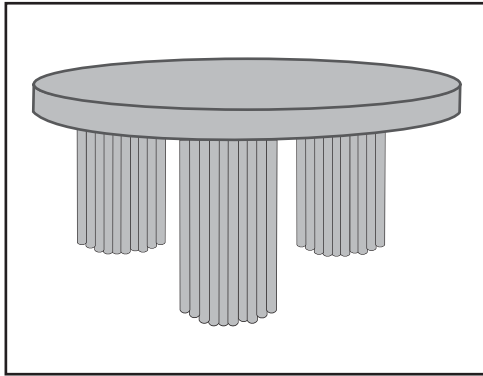


ASSEMBLY INSTRUCTIONS

279-CT

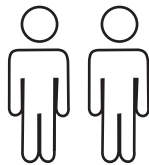
meridian.
furniture



**+ Do Not Use
Power Tools**



**+ Suggested
Adults**



NOTE: For questions about parts or assembly please email support@meridianfurnitureusa.com or call us at 718-758-4455.

- 1 Read instructions cover to cover.
- 2 Save all packaging unit assembly is completed.

1 **IMPORTANT SAFETY INFORMATION**

Do not assemble the product if the following part arrives damaged:

Part # 1 Table Top, part # 2 Table Legs

CAUTION : DO NOT place hot objects (100° F or more) directly on the Surface.

2 **IMPORTANT ASSEMBLY INFORMATION**

Assembly Step : Turn Part # 2 Clockwise to connect to part #1.

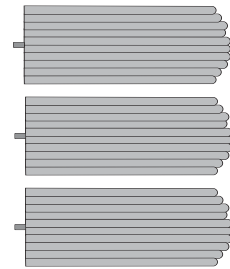
Assembly Step : Repeat Same Step to assemble remaining part #2.

+ Parts Included

- ① TOP
(No. of pc 1)



- ② Legs
(No. of pcs 3)



+ Hardware Included

No Hardware Required for Assembly.

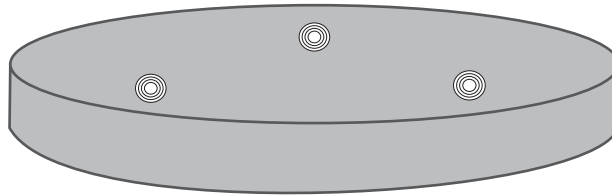
ASSEMBLY INSTRUCTIONS

279-CT

meridian.
furniture

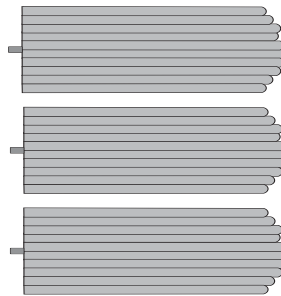
1

Part#1 Table TOP



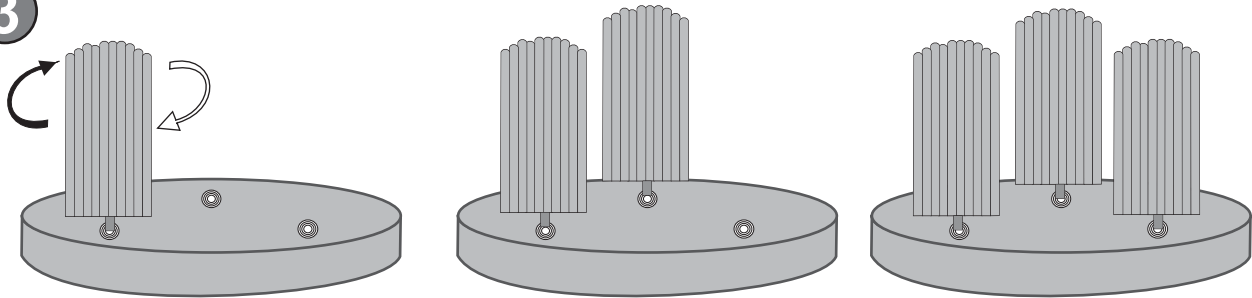
2

Part#2 Table Legs

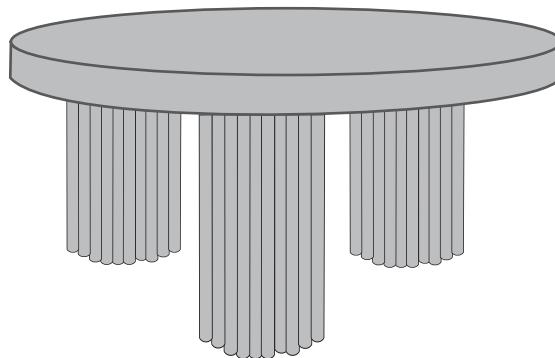


3

Tighten Leg Part#2 turning Clockwise



4



NOTE: For questions about parts or assembly please email support@meridianfurnitureusa.com or call us at 718-758-4455.

www.MeridianFurnitureUSA.com | support@meridianfurnitureusa.com