

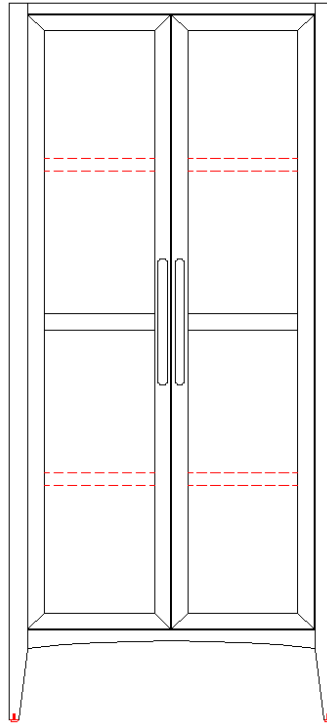
MOE'S

home collection

ASSEMBLY INSTRUCTIONS.

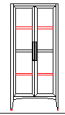
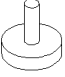
HARRINGTON TALL CABINET

VL-1080-24



THANK YOU FOR YOUR PURCHASE!

PARTS AND HARDWARE.

NO.	DESCRIPTION	IMAGE	Q'TY
①	BODY		1
②	ADJUSTABLE FEET		4

NOTES.

Thank you for purchasing this quality product! Be sure to check all packing material carefully for small part that may have come loose inside the carton during shipping.

Caution: The item is heavy, assembly should be performed by two people.

STEP 1.

