

MOE'S

home collection

ASSEMBLY INSTRUCTIONS.

LAPIS DINING CHAIR DARK BLUE-M2



UU-1001-26





THANK YOU FOR YOUR PURCHASE!

PARTS AND HARDWARE.

PARTS LIST

No.	DESCRIPTION	IMAGE	Q'TY
①	SEAT		1
②	LEG		1

HARDWARE LIST

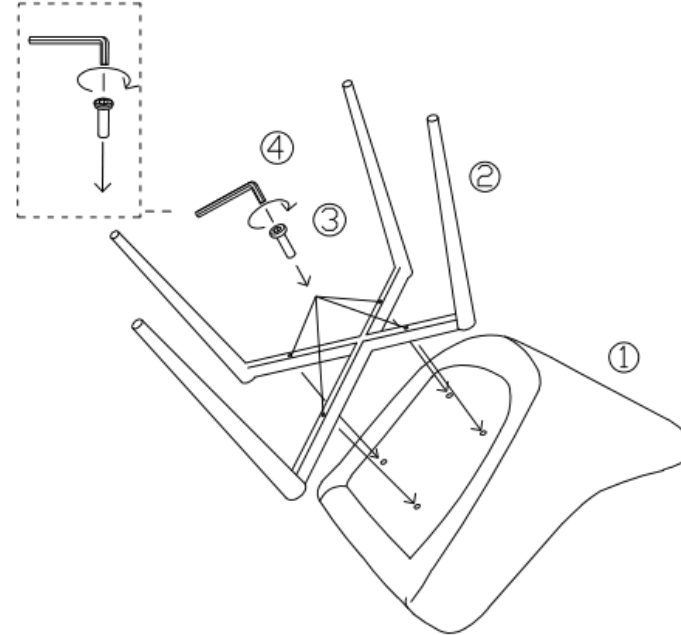
No.	DESCRIPTION	IMAGE	Q'TY
③	SCREW(6*45)		4
④	WRENCH		1

NOTES.

Thank you for purchasing this quality product! Be sure to check all packing material carefully for small part that may have come loose inside the carton during shipping

CAUTION: This item is heavy, assembly should be performed by two people.

STEP 1.



STEP 2.

