

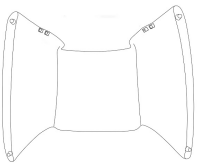


furnishing better
lives together

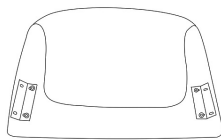
ASSEMBLY INSTRUCTIONS & PARTS IDENTIFICATION **DOLCE ACCENT CHAIR**

Thank you for purchasing this quality product. Be sure to check all packing material carefully for small parts that may have come loose inside the carton during shipment.

SETUP REQUIRES TWO PEOPLE



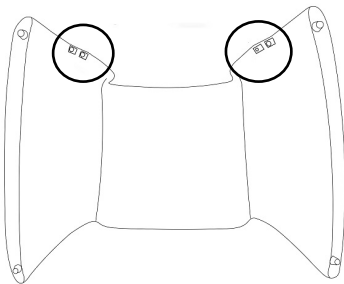
CHAIR BASE



CHAIR BACK

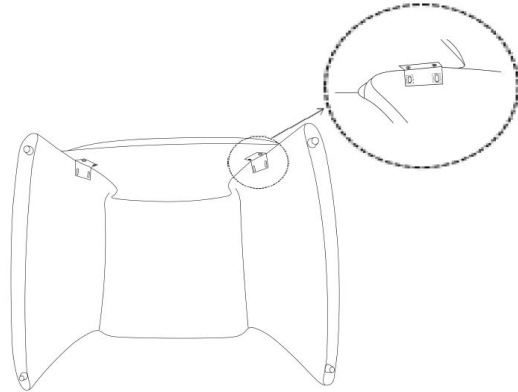
STEP 1

LAY THE CHAIR BASE ON A CLEAN PADDED SURFACE WITH THE BOLT HOLES FACING UP.



STEP 2

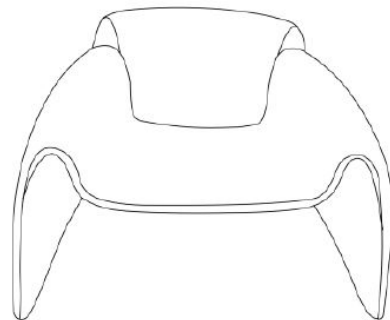
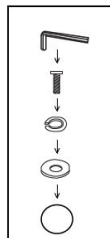
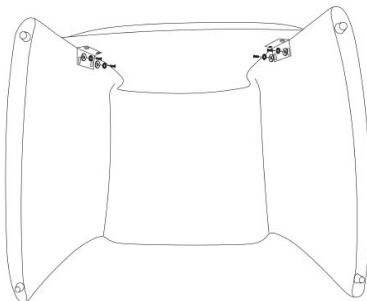
LAY THE CHAIR BACK ON THE CHAIR BASE ALIGNING THE CONNECTING BRACKETS ON THE CHAIR BACK WITH THE RECEIVING INSERTS IN THE CHAIR BASE



STEP 3

ATTACH THE CHAIR BACK TO THE CHAIR BASE USING A BOLT, LOCK WASHER, AND FLAT WASHER. DO NOT FULLY TIGHTEN THE BOLTS UNTIL ALL BOLTS ARE IN PLACE.

HAND TIGHTEN WITH THE ALLEN KEY PROVIDED. DO NOT USE POWER TOOLS TO ATTACH THE BOLTS.



Chair Hardware Kit # DOLCE P46			
No	Code	Description	Qty
A		Bolt M8 x 20mm	5 pcs
B		Lock Washer	5 pcs
C		Flat Washer	5 pcs
D		Allen Key	1 pc

PLEASE NOTE

A SPARE BOLT AND WASHER SET IS INCLUDED.

FABRIC CARE INSTRUCTION - REGULAR CARE

Avoid direct sunlight ,water,oil,acid,sharp objects etc. Use vacuum cleaner to clean. Wipe spills immediately. Clean only with a water-based shampoo or foam upholstery cleaner. Do not over wet. Do not use solvents to spot clean. Pile fabrics may require brushing to restore appearance. FABRIC CONTENT: 100%Polyester Cleaning W

FLOOR PROTECTION:

Do not place rubber or plastic feet directly on the wood or tile finish. Use felt chair pads as chemicals within the plastic or rubber may react with the finish if left in contact for a long period of time.