

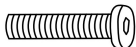

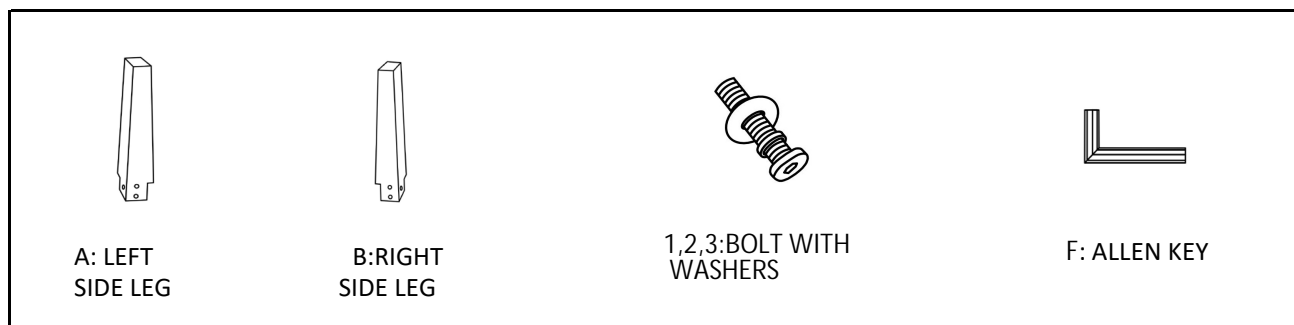
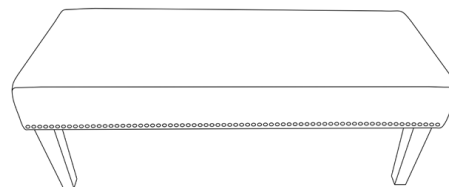


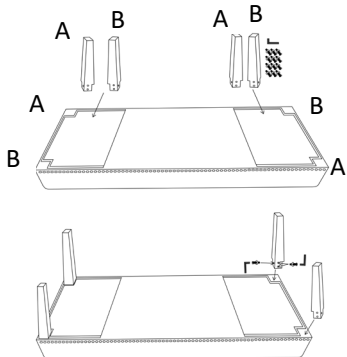
PARTS LIST

Item	Code	Description	Qty
A	BRIANNABNP43	LEFT SIDE FACING LEG - A	2PCS
B	BRIANNABNP42	RIGHT SIDE FACING LEG - B	2PCS

Hardware kit BRINNA-BNP46			
No	Description		Qty
1		FLAT WASHER	12PCS
2		LOCK WASHER	12PCS
3		BOLT (5/16*65mm)	12PCS
4		ALLEN KEY	1PC



Assembly steps:



- Step 1. REMOVE LEGS FROM THE BOTTOM OF THE BENCH(A/B)
Step 2. INSTALL THE LEGS ON THE BENCH USING
A BOLT, LOCK WASHER AND FLAT WASHER
HAND TIGHTEN USING THE ALLEN KEY.
DO NOT USE POWER TOOLS TO ASSEMBLE

*** Please Note: Legs must be match noted position (#A/#B)

FABRIC CARE INSTRUCTIONS
REGULAR CARE

Clean only with a water-based shampoo or foam upholstery cleaner.
Do not over wet. Do not use solvents to spot clean.
Pile fabrics may require brushing to restore appearance.
FABRIC CONTENT 100% POLYESTER -
CLEANING CODE "W"

MADE IN CHINA