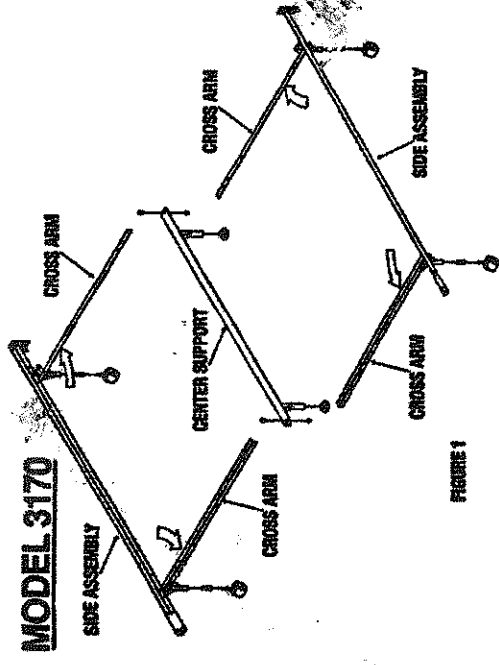


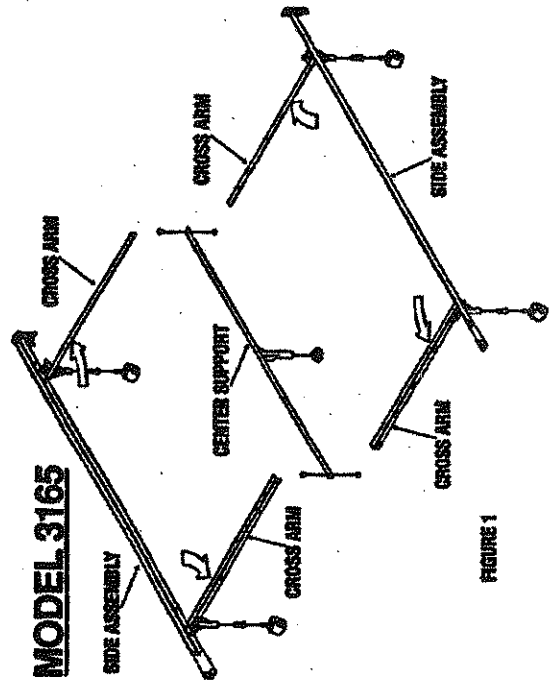
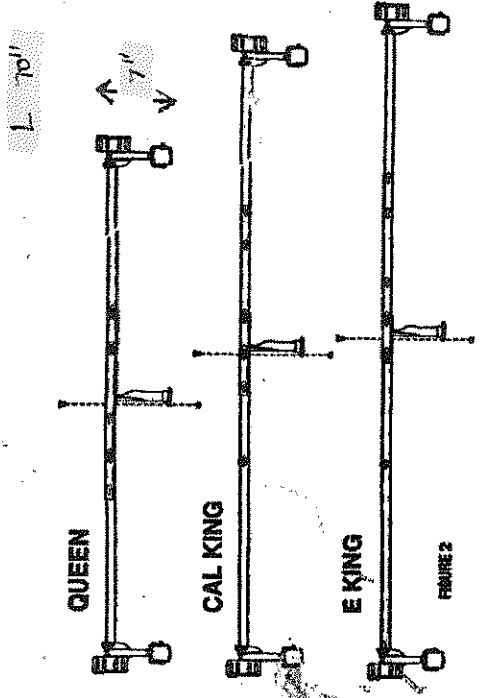
MT-FRAM-QK

"features locking system" patent#6,415,465b1



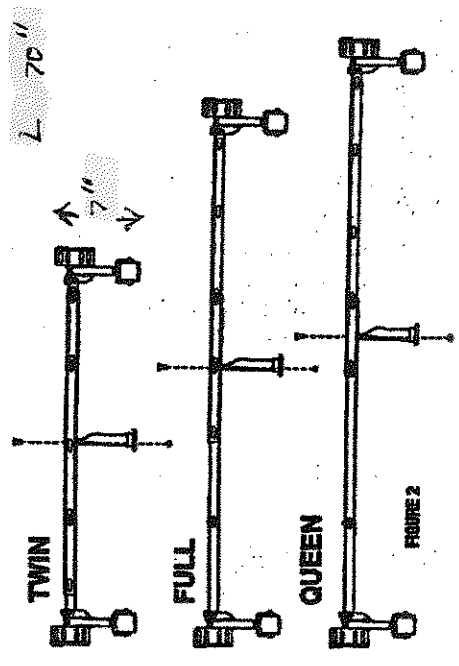
**Assembly Instruction:**

1. See Figure 1
  - A. Insert glides or rollers and plastic inserts into legs on side assembly.
  - B. Install end caps onto the siderails.
  - C. Swing out all cross arms to a right angle.
2. See Figure 2
  - A. Determine the bed size. Overlap cross arms to proper keyhole slots.
  - B. Insert rivet into appropriate slot and slide to the end of the slot.
3. See Figure 1
  - A. Attach center glide(s) onto the leg(s) on center support (if applicable)
  - B. Attach center support to cross arm (if applicable)



**Assembly Instruction:**

1. See Figure 1
  - A. Insert glides or rollers and plastic inserts into legs on side assembly.
  - B. Install end caps onto the siderails.
  - C. Swing out all cross arms to a right angle.
2. See Figure 2
  - A. Determine the bed size. Overlap cross arms to proper keyhole slots.
  - B. Insert rivet into appropriate slot and slide to the end of the slot.
3. See Figure 1
  - A. Attach center glide(s) onto the leg(s) on center support (if applicable)
  - B. Attach center support to cross arm (if applicable)



MT-FRAM-TFG

"features locking system" patent#6,415,465b1