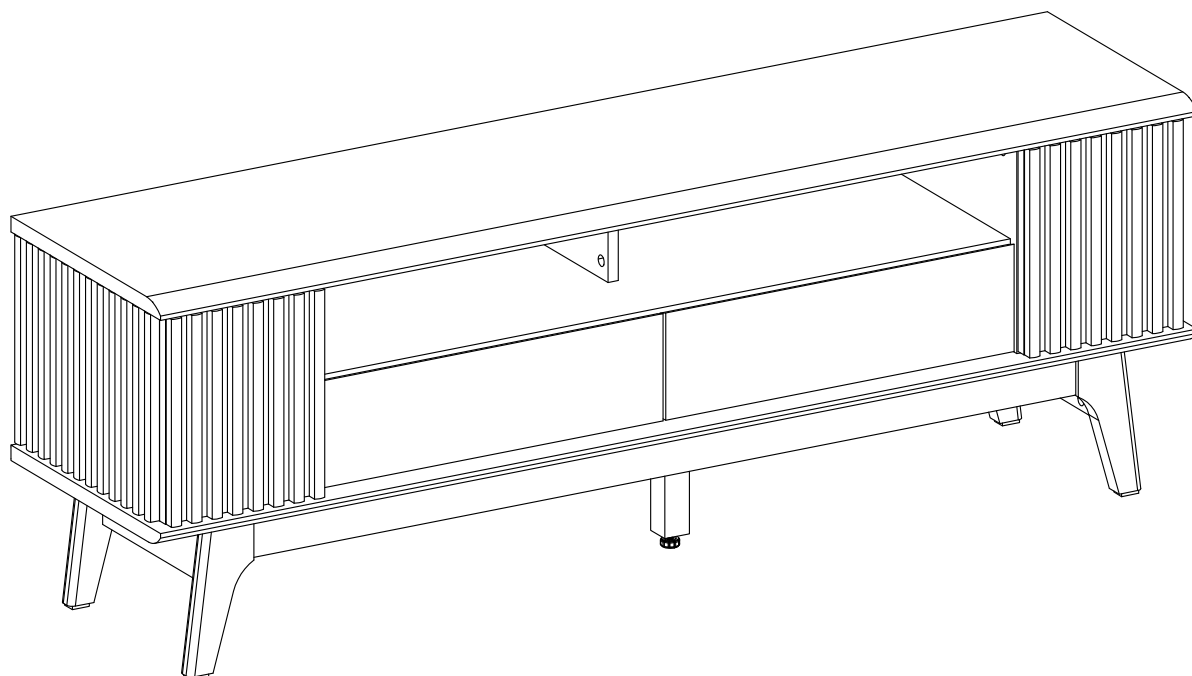


# ASSEMBLY INSTRUCTIONS

# EEI-6279

V0.02.02.23



**Questions? Contact us!**

609.256.9000 • [cs@modway.com](mailto:cs@modway.com)  
[www.modway.com](http://www.modway.com)

**\*modway**

# Let's get started!

\*modway



Read through all of the instructions before starting



Care instructions are listed in the last step of this manual



Approx. 60 minutes assembly time



Make sure you have all parts and components before discarding any packing materials



2 people recommended for assembly

**Only use hand tools to assemble this item.** Do not use power tools. Do not tighten bolts or screws completely until all hardware is lined up and inserted into the holes.

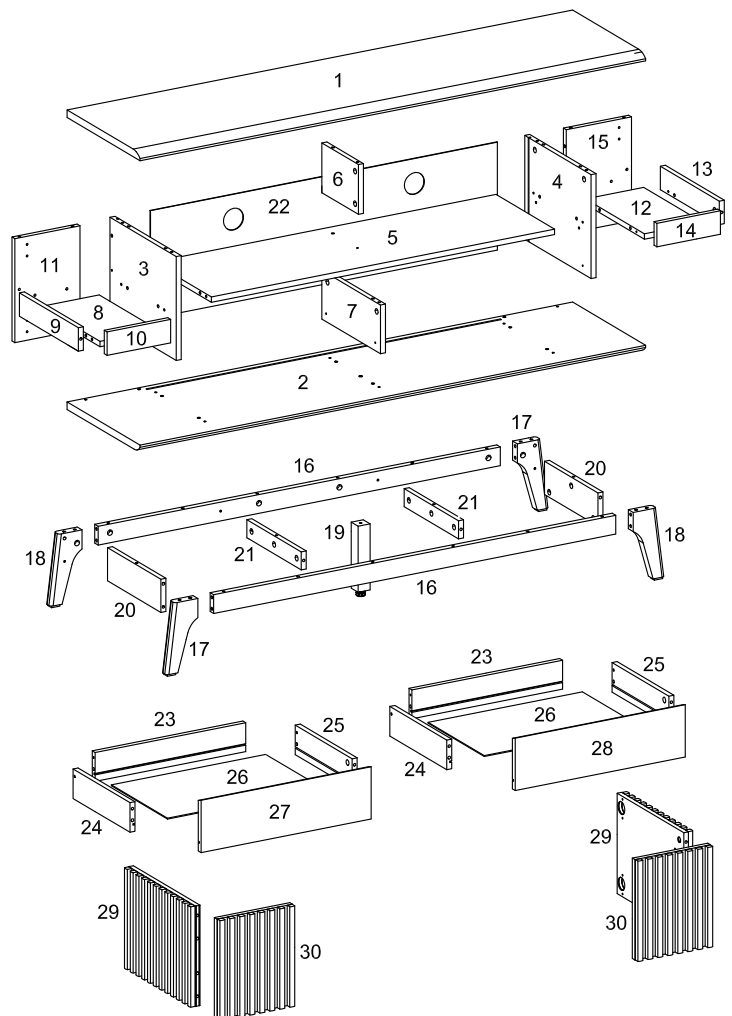
Do not over-tighten screws and bolts to avoid stripping the hardware or cracking the item.

Assemble your item on a flat, carpeted area, with plenty of space to work. This will prevent damage and scratches to your floors or the item while you're assembling the product.

Keep all components and packaging out of reach of children or animals to avoid risk of choking or suffocation.

## Furniture components:

1	Top Board	x1	24	Left Side Drawer Board	x2
2	Bottom Board	x1	25	Right Side Drawer Board	x2
3	Left Side Board	x1	26	Bottom Drawer Board	x2
4	Right Side Board	x1	27	Left Front Drawer Board	x1
5	Middle Board	x1	28	Right Front Drawer Board	x1
6	Top Center Board	x1	29	Side Door Support	x2
7	Bottom Center Board	x1	30	Door	x2
8	Left Shelf Board	x1			
9	Side Left Shelf Support	x1			
10	Front Left Shelf Support	x1			
11	Back Left Shelf Support	x1			
12	Right Shelf Board	x1			
13	Side Right Shelf Support	x1			
14	Front Right Shelf Support	x1			
15	Back Right Shelf Support	x1			
16	Front Bottom Support	x2			
17	Left Leg	x2			
18	Right Leg	x2			
19	Middle Leg	x1			
20	Side Bottom Support	x2			
21	Middle Bottom Support	x2			
22	Backboard	x1			
23	Back Drawer Board	x2			








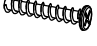












Wait!

Missing parts or hardware? Need assistance?

Contact us before returning your item. We're here to help!

609.256.9000 • cs@modway.com

## Provided hardware:

A		Cam Lock Ø15 mm	x56
B		Cam Bolt Ø7.5 x 32 mm	x52
C		Cam Cover Ø17 mm	x56
D		Plastic Dowel Ø8 x 32 mm	x68
E		Screw M 6 x 13 mm	x8
F		Screw M 10 x 33.5 mm	x22
G		Screw M 6 x 8 mm	x8
H		Backply Stopper	x18
I		Screw M 4 x 19 mm	x18
J		Drawer Runner	x2
K		Bolt M 6 x 60 mm	x1
L		L - Plate	x4
M		Door Hinge	x4
N		Screw M 4 x 10 mm	x20
O		Allen Key	x1
P		Washer Plate M 6	x4
Q		Cam Bolt Ø6 x 40 mm	x4
R		Barrel Nut	x1

## What you need:



**Wait!**

**Missing parts or hardware? Need assistance?**

Contact us before returning your item. We're here to help!

609.256.9000 • [cs@modway.com](mailto:cs@modway.com)

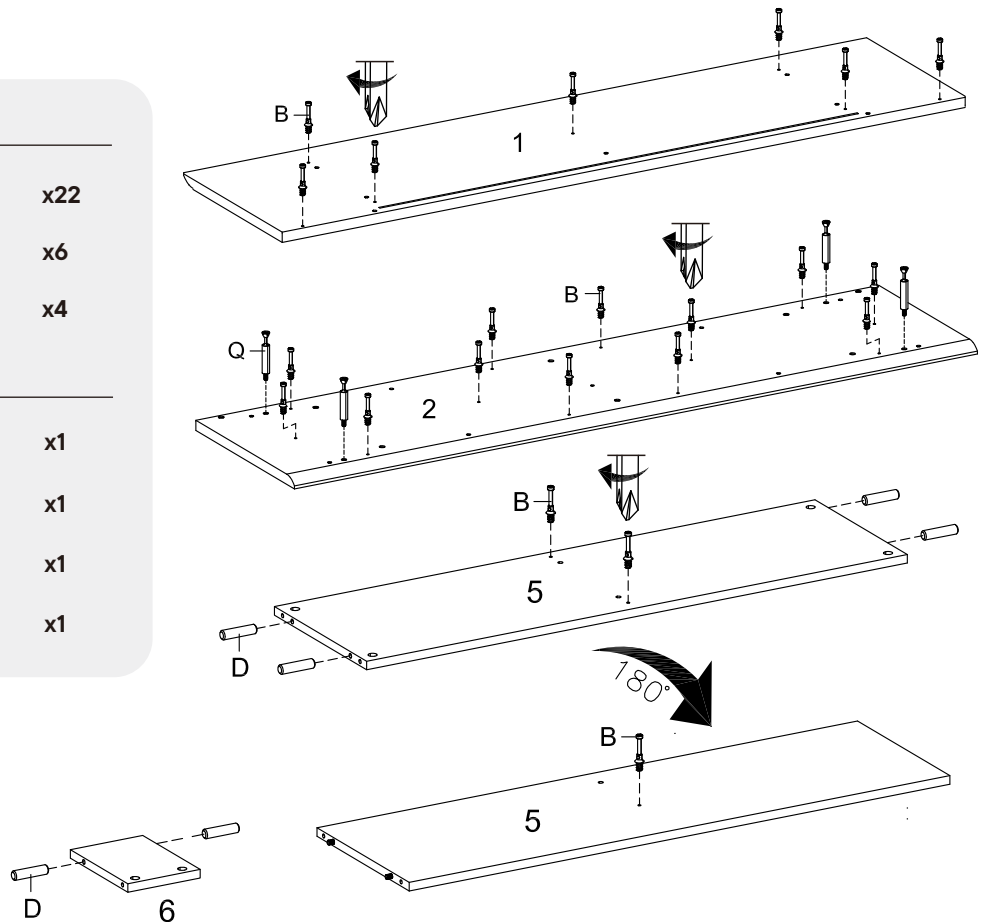
# Step 1

## HARDWARE

- B** Cam Bolt Ø7.5 x 32 mm x22
- D** Plastic Dowel Ø8 x 32 mm x6
- Q** Cam Bolt Ø6 x 40 mm x4

## COMPONENTS

- 1** Top Board x1
- 2** Bottom Board x1
- 5** Middle Board x1
- 6** Top Center Board x1



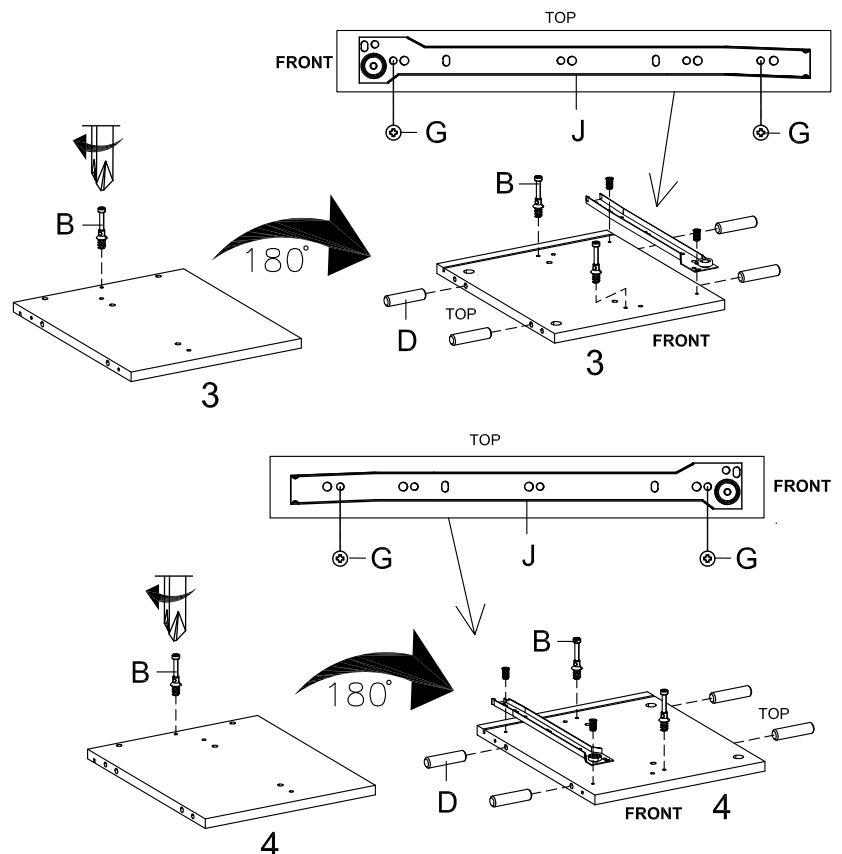
# Step 2

## HARDWARE

- B** Cam Bolt Ø7.5 x 32 mm x6
- D** Plastic Dowel Ø8 x 32 mm x8
- G** Screw M 6 x 8 mm x4
- J** Drawer Runner x1

## COMPONENTS

- 3** Left Side Board x1
- 4** Right Side Board x1



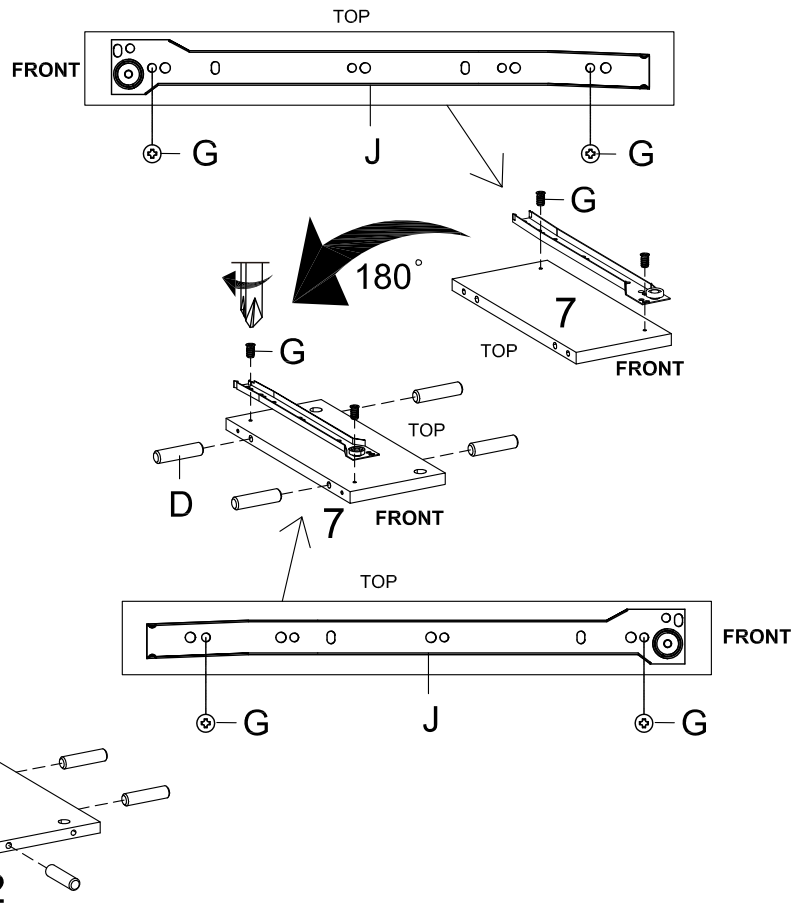
# Step 3

## HARDWARE

- D** Plastic Dowel Ø8 x 32 mm x14
- G** Screw M 6 x 8 mm x4
- J** Drawer Runner x1

## COMPONENTS

- 7** Bottom Center Board x1
- 8** Left Self Board x1
- 12** Right Self Board x1



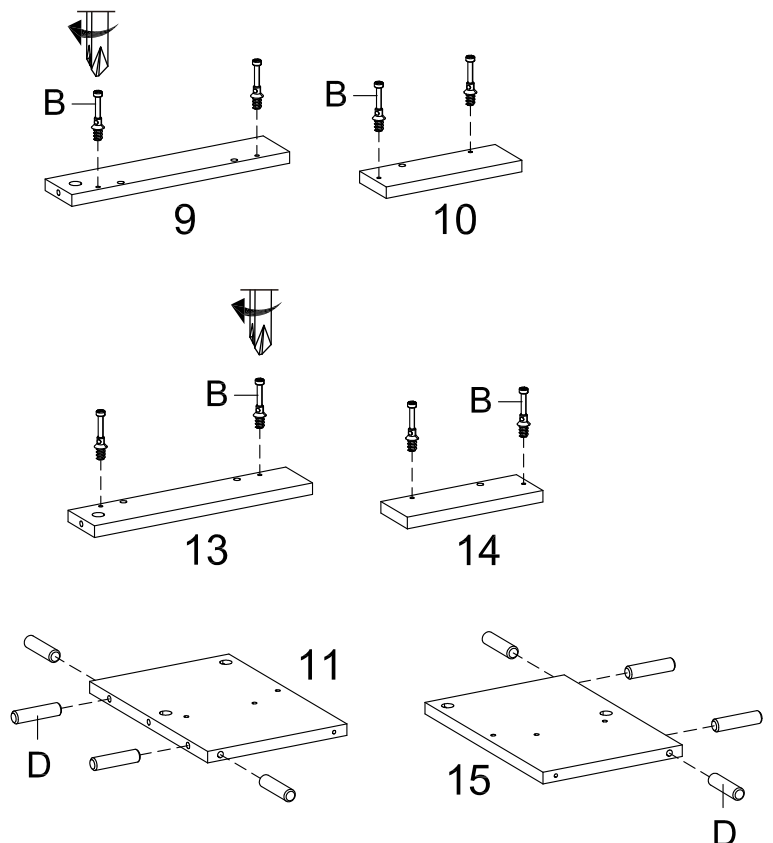
# Step 4

## HARDWARE

- B** Cam Bolt Ø7.5 x 32 mm x8
- D** Plastic Dowel Ø8 x 32 mm x8

## COMPONENTS

- 9** Side Left Self Support x1
- 10** Front Left Self Support x1
- 11** Back Left Self Support x1
- 13** Side Right Self Support x2
- 14** Front Right Self Support x1
- 15** Back Right Self Support x2



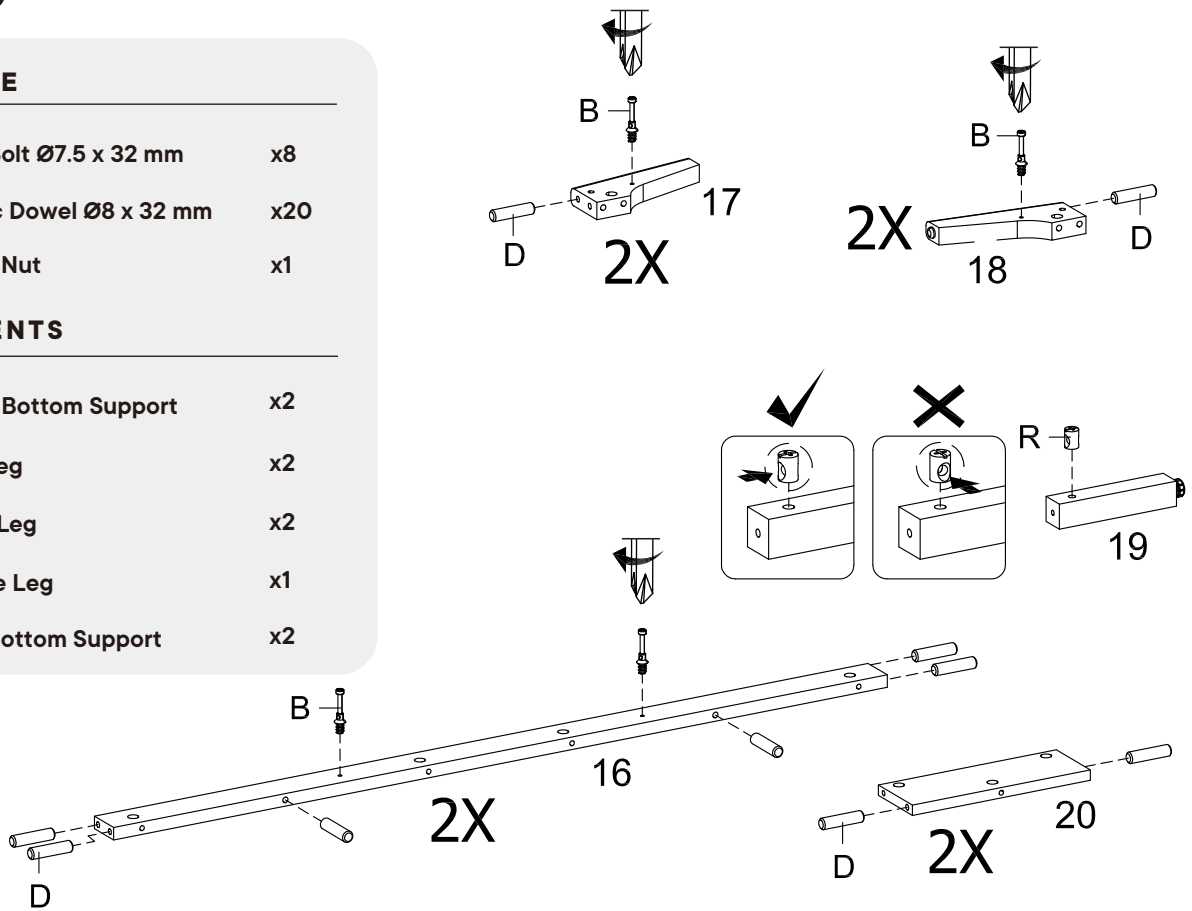
# Step 5

## HARDWARE

- B** Cam Bolt Ø7.5 x 32 mm x8
- D** Plastic Dowel Ø8 x 32 mm x20
- R** Barrel Nut x1

## COMPONENTS

- 16** Front Bottom Support x2
- 17** Left Leg x2
- 18** Right Leg x2
- 19** Middle Leg x1
- 20** Side Bottom Support x2



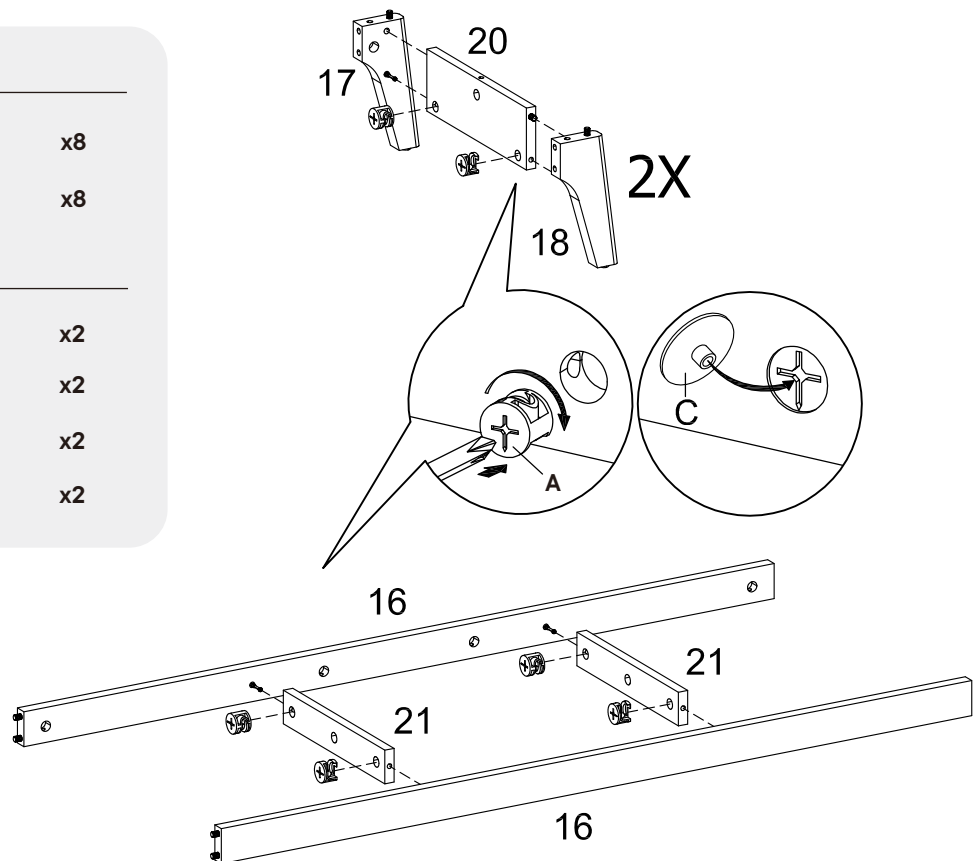
# Step 6

## HARDWARE

- A** Cam Lock Ø15 mm x8
- C** Cam Cover Ø17 mm x8

## COMPONENTS

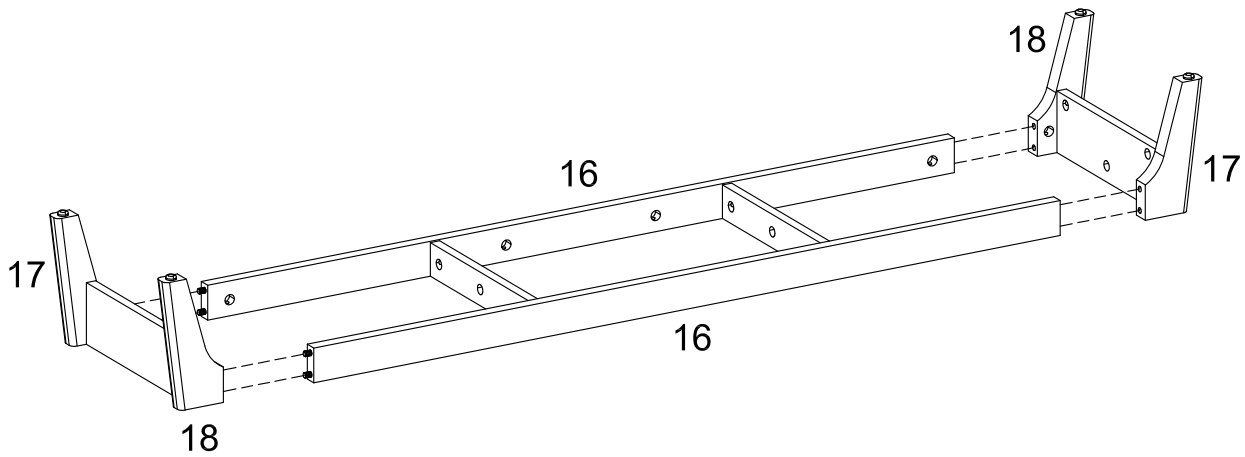
- 16** Front Bottom Support x2
- 17** Left Leg x2
- 18** Right Leg x2
- 21** Middle Bottom Support x2



## Step 7

### COMPONENTS

16	Front Bottom Support	x2
17	Left Leg	x2
18	Right Leg	x2



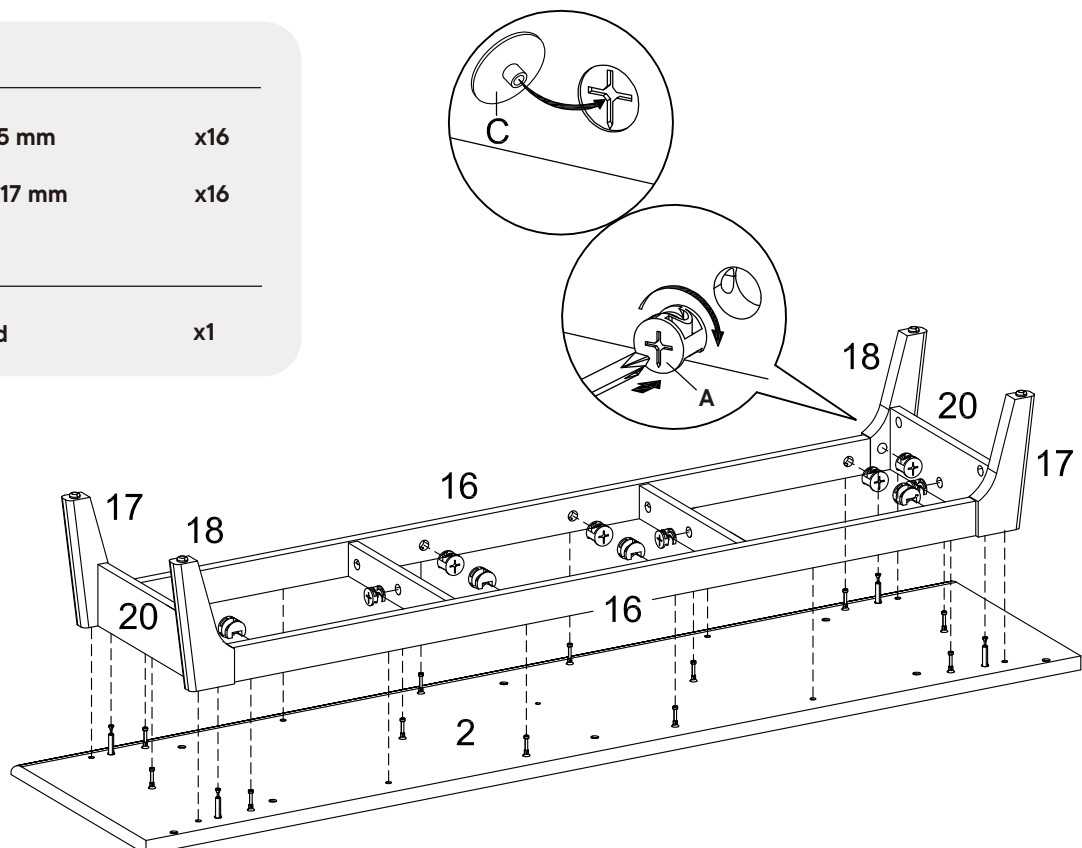
## Step 8

### HARDWARE

A	Cam Lock Ø15 mm	x16
C	Cam Cover Ø17 mm	x16

### COMPONENTS

2	Bottom Board	x1
---	--------------	----



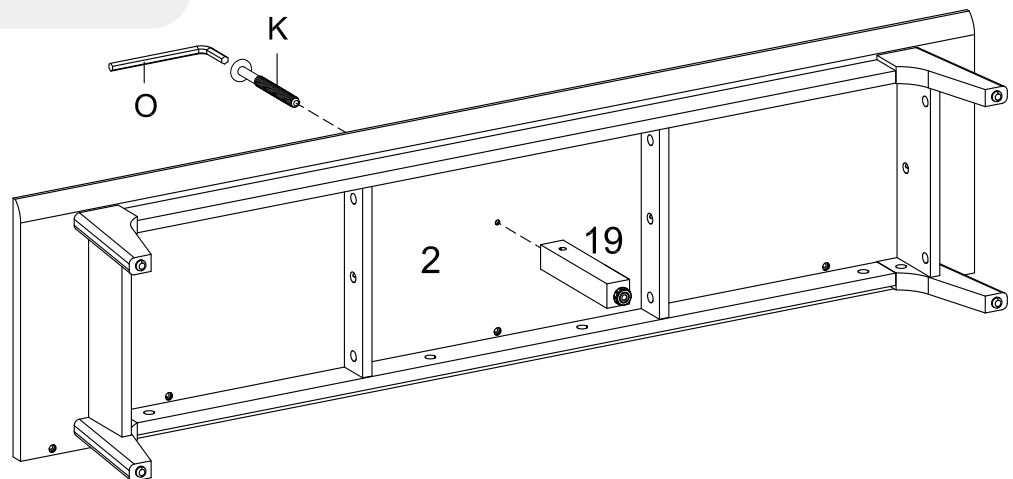
## Step 9

### HARDWARE

- K** Bolt M 6 x 60 mm x1
- O** Allen Key x1

### COMPONENTS

- 19** Middle Leg x1



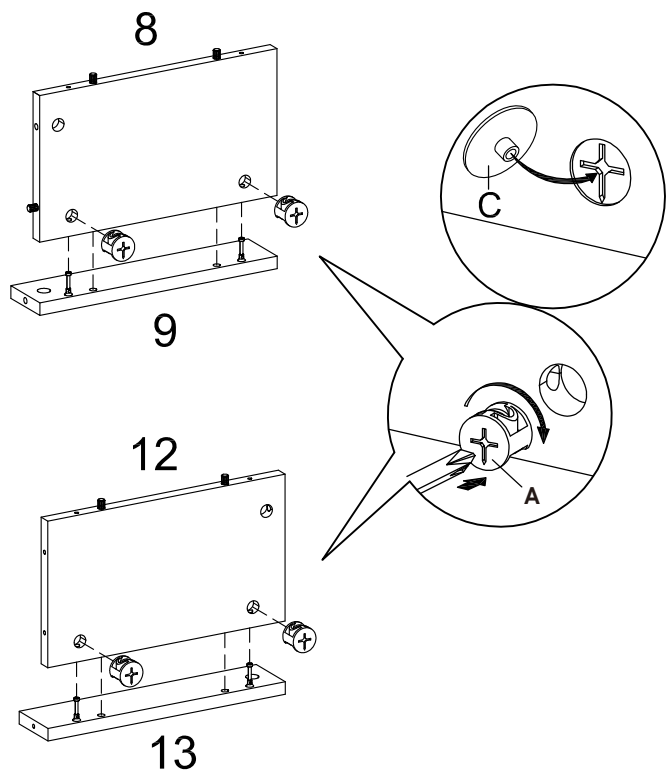
## Step 10

### HARDWARE

- A** Cam Lock Ø15 mm x4
- C** Cam Cover Ø17 mm x4

### COMPONENTS

- 8** Left Self Board x1
- 9** Side Left Self Support x1
- 12** Right Self Board x1
- 13** Side Right Self Support x1





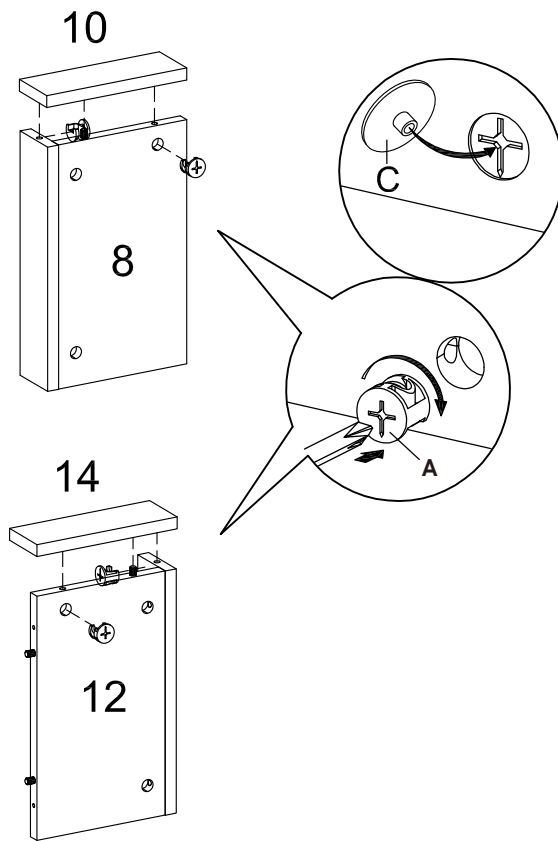
# Step 11

## HARDWARE

- A** Cam Lock Ø15 mm x4
- C** Cam Cover Ø17 mm x4

## COMPONENTS

- 10** Front Left Self Support x1
- 14** Front Right Self Support x1



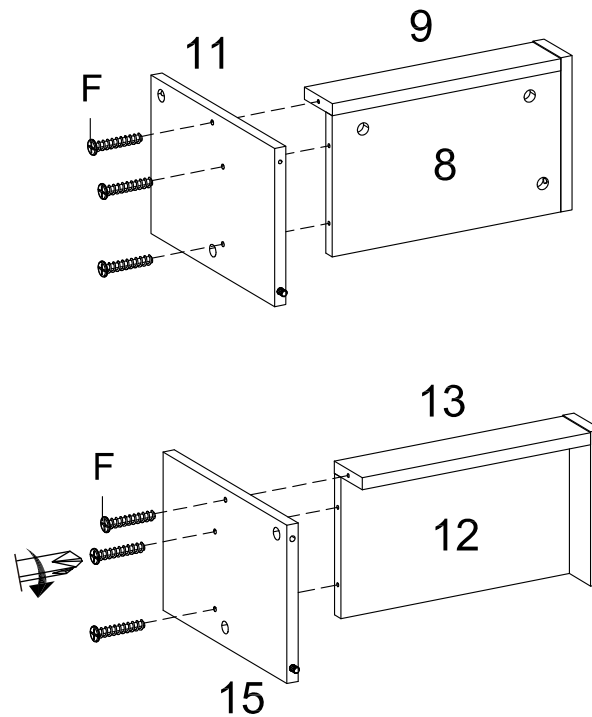
# Step 12

## HARDWARE

- F** Screw M 10 x 33.5 mm x6

## COMPONENTS

- 11** Back Left Self Support x1
- 15** Back Right Self Support x1



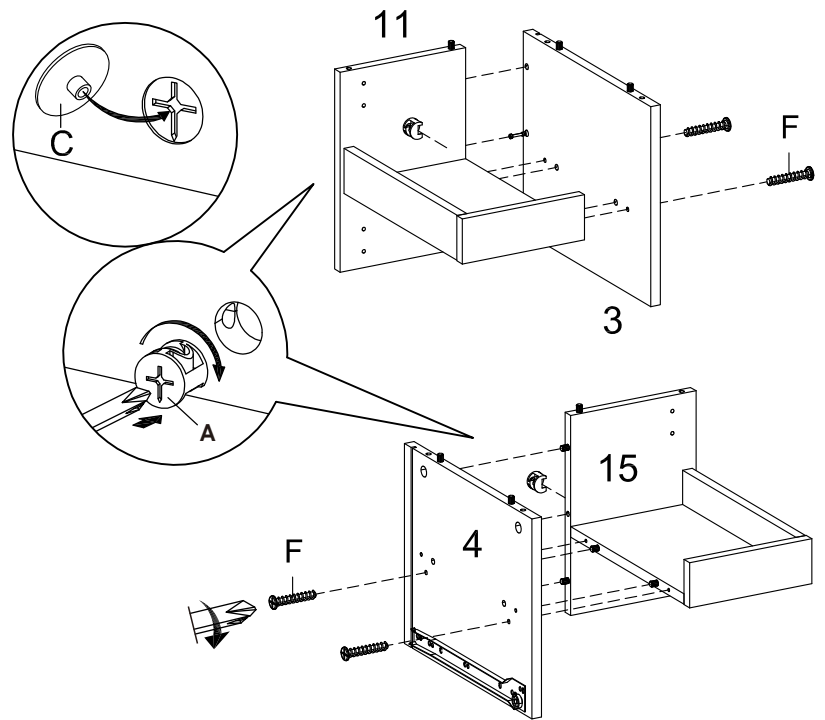
## Step 12

### HARDWARE

- A** Cam Lock Ø15 mm x2
- C** Cam Cover Ø17 mm x2
- F** Screw M 10 x 33.5 mm x4

### COMPONENTS

- 3** Left Side Board x1
- 4** Right Side Board x1



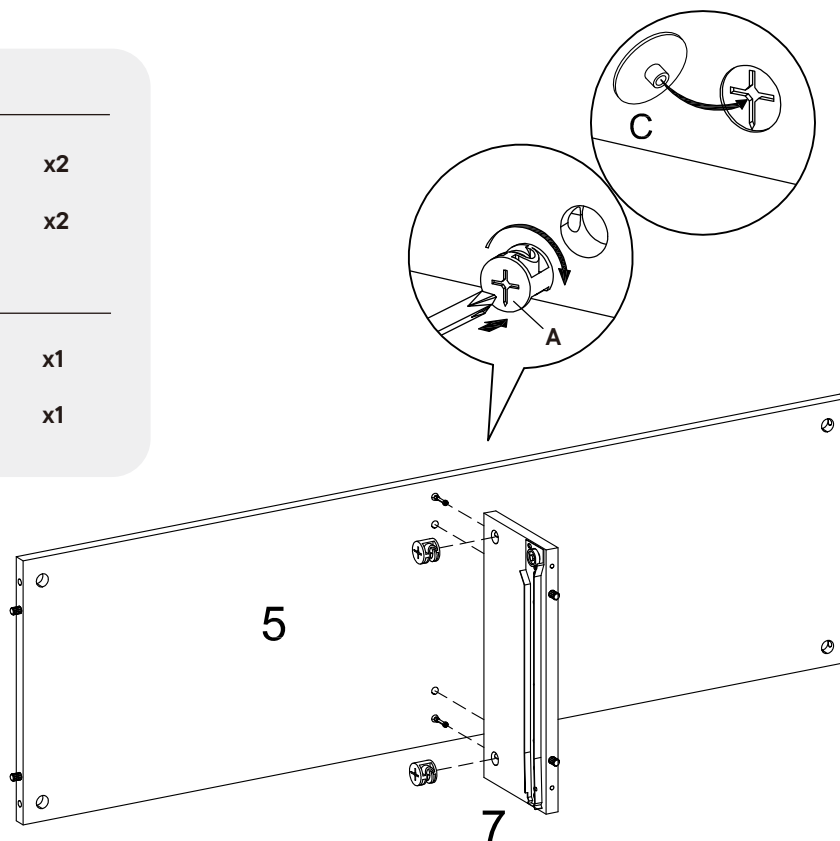
## Step 13

### HARDWARE

- A** Cam Lock Ø15 mm x2
- C** Cam Cover Ø17 mm x2

### COMPONENTS

- 5** Middle Board x1
- 7** Bottom Center Board x1



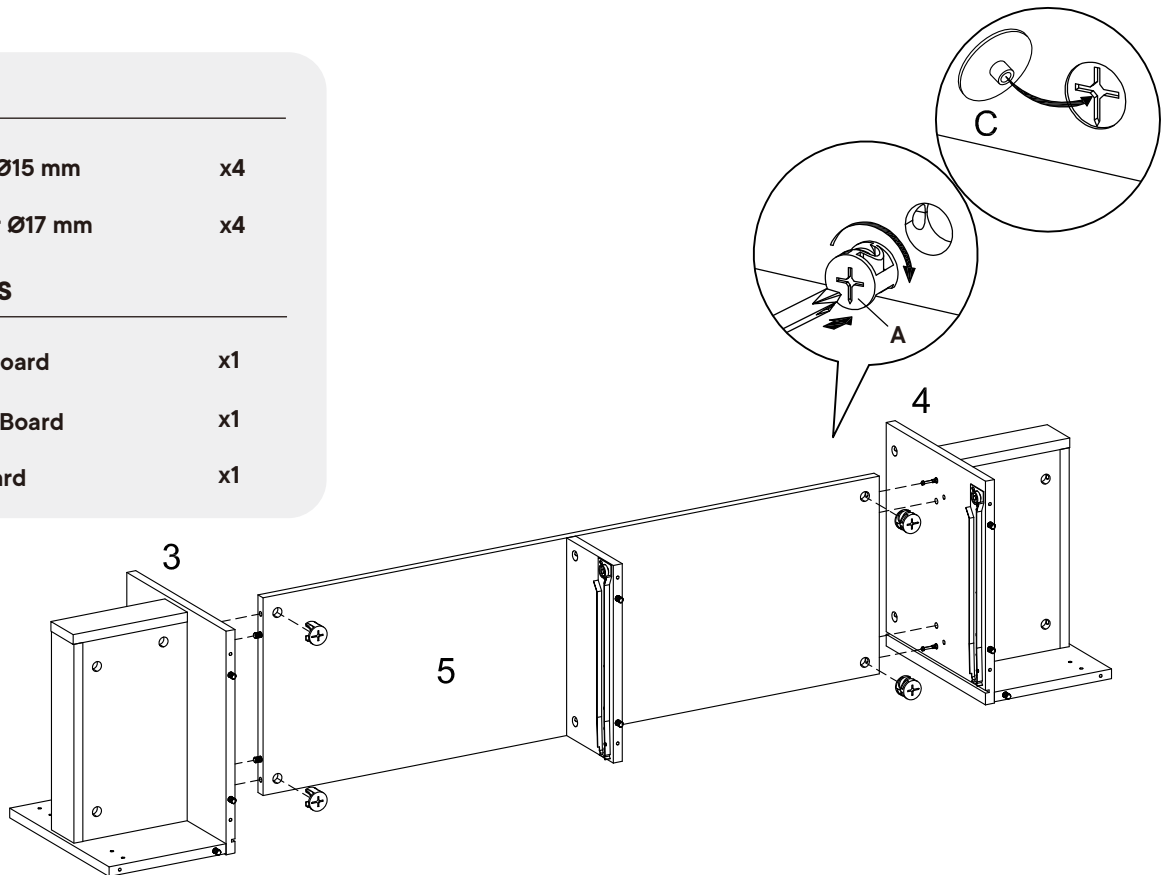
# Step 14

## HARDWARE

- A** Cam Lock Ø15 mm x4
- C** Cam Cover Ø17 mm x4

## COMPONENTS

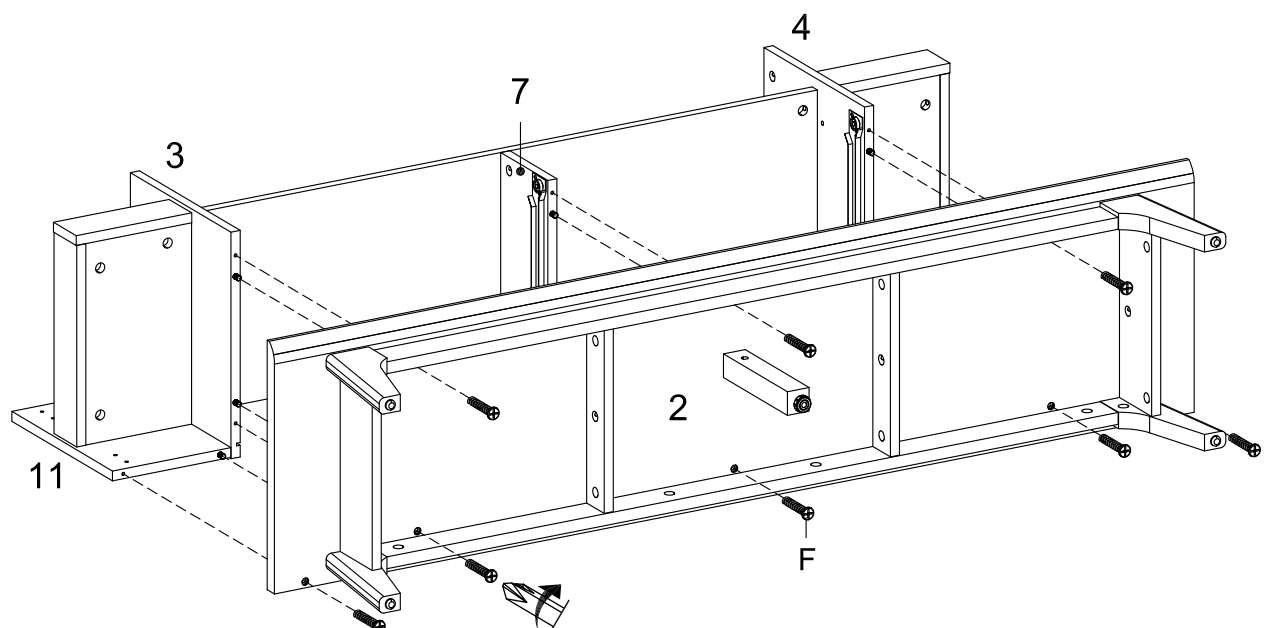
- 3** Left Side Board x1
- 4** Right Side Board x1
- 5** Middle Board x1



# Step 15

## HARDWARE

- F** Screw M 10 x 33.5 mm x8



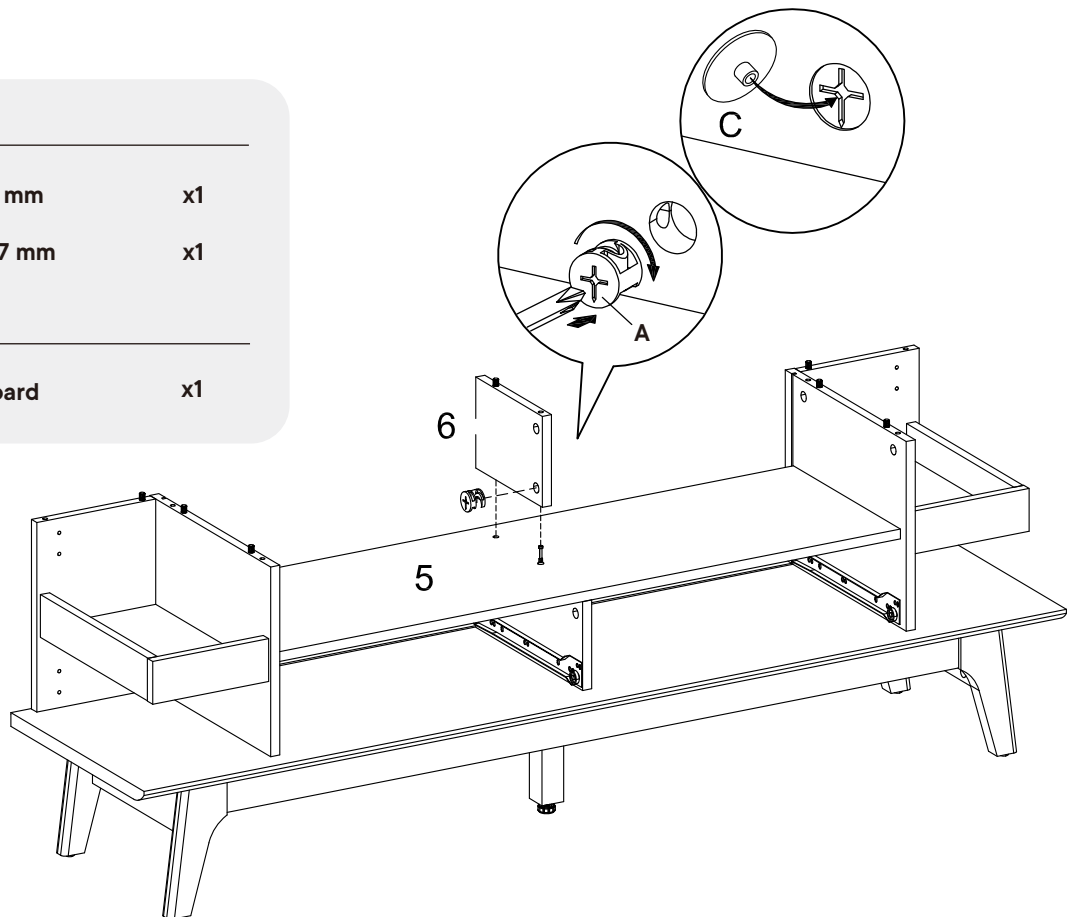
## Step 16

### HARDWARE

- A** Cam Lock Ø15 mm x1
- C** Cam Cover Ø17 mm x1

### COMPONENTS

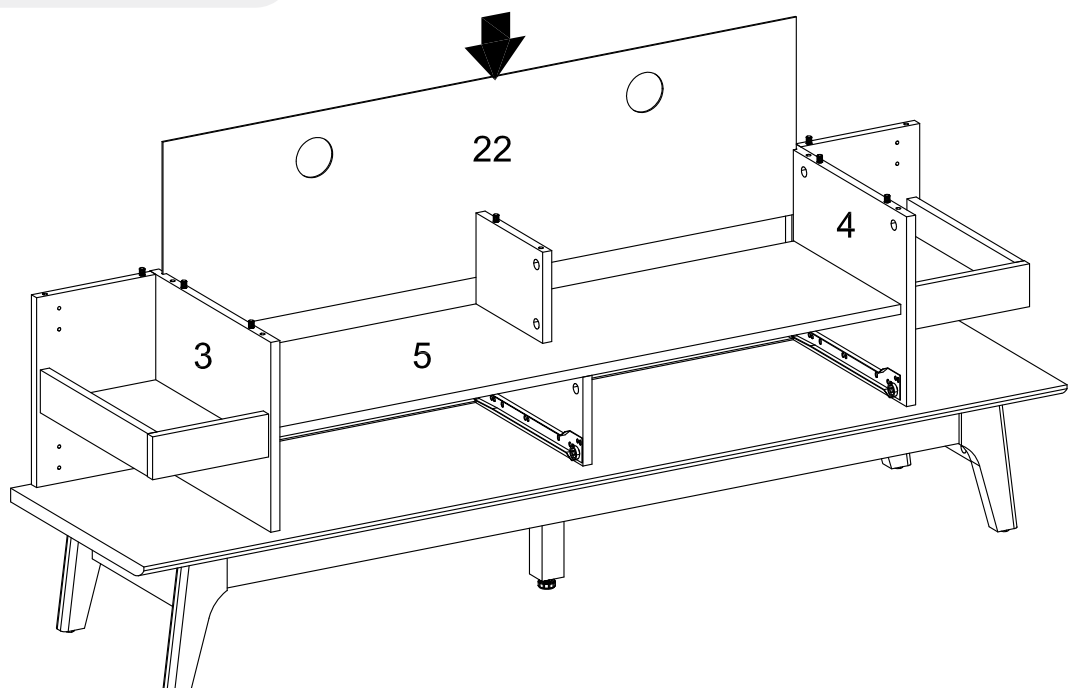
- 6** Top Center Board x1



## Step 17

### COMPONENTS

- 22** Backboard x1



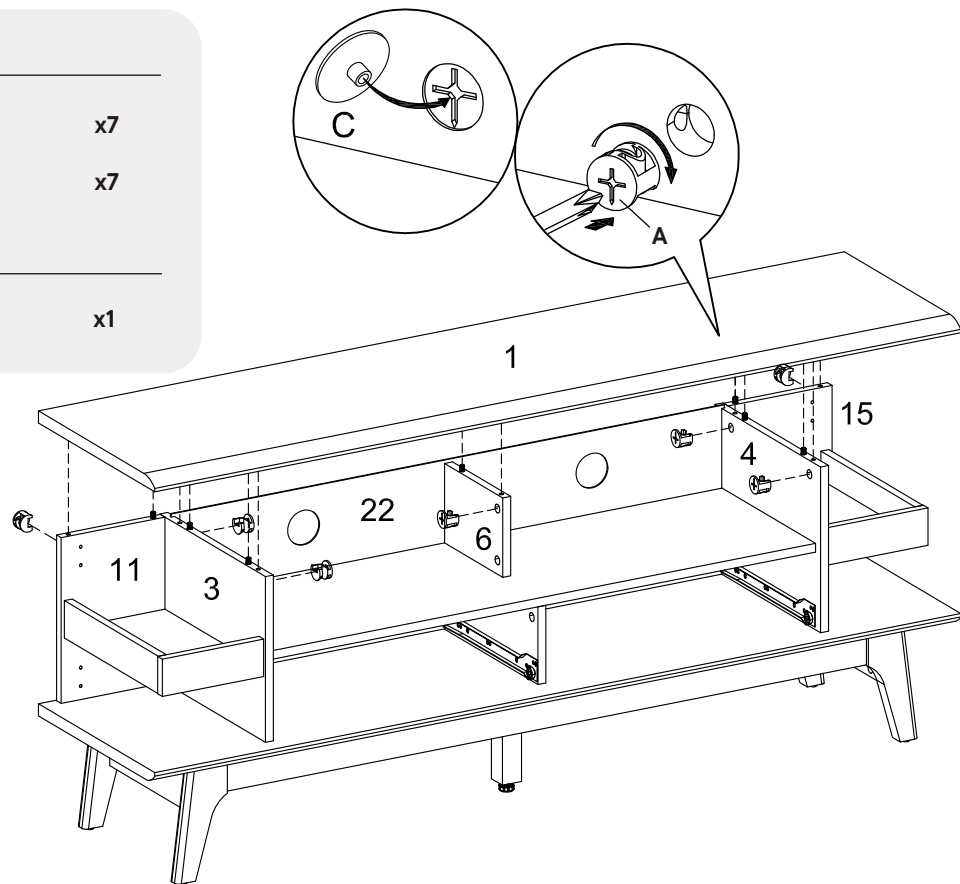
# Step 18

## HARDWARE

- A** Cam Lock Ø15 mm x7
- C** Cam Cover Ø17 mm x7

## COMPONENTS

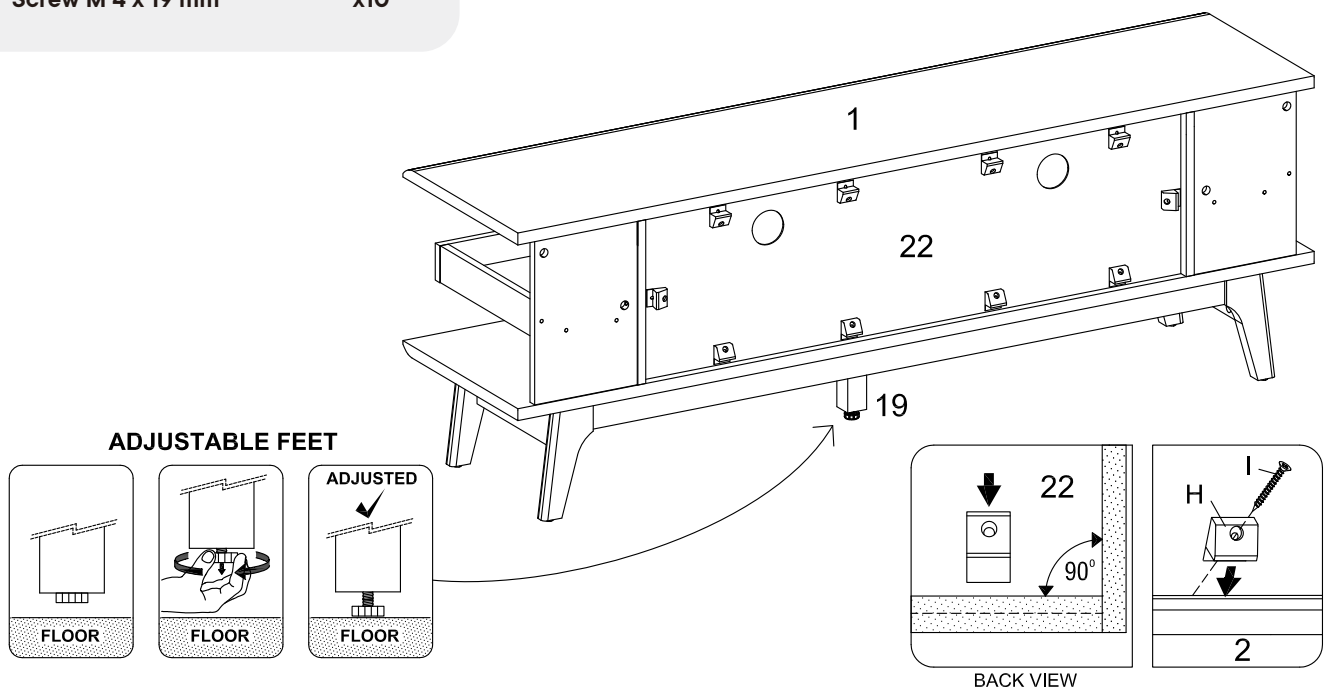
- 1** Top Board x1



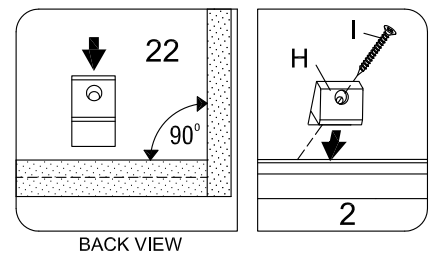
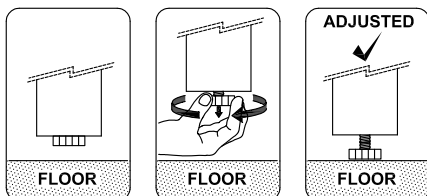
# Step 19

## HARDWARE

- H** Backply Stopper x10
- I** Screw M 4 x 19 mm x10



### ADJUSTABLE FEET



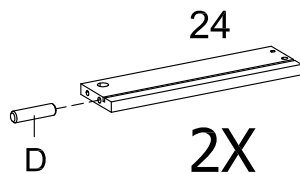
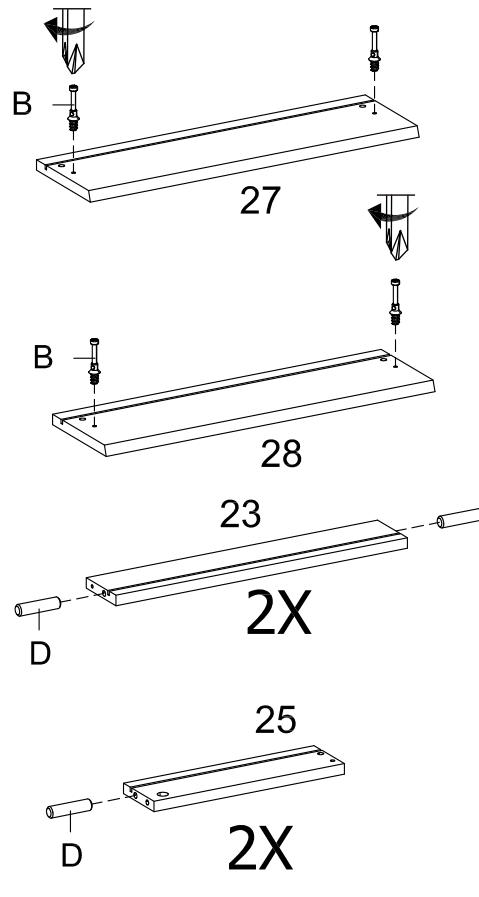
# Step 19

## HARDWARE

- B** Cam Bolt  $\varnothing 7.5 \times 32$  mm x4
- D** Plastic Dowel  $\varnothing 8 \times 32$  mm x8

## COMPONENTS

- 23** Back Drawer Board x2
- 24** Left Side Drawer Board x2
- 25** Right Side Drawer Board x2
- 27** Left Front Drawer Board x1
- 28** Right Front Drawer Board x1



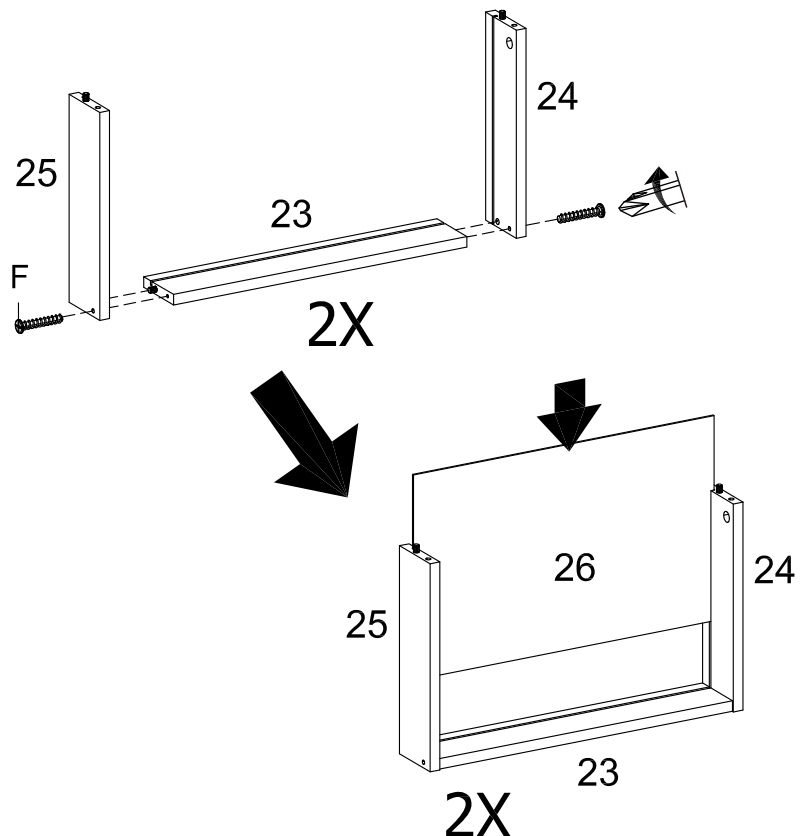
# Step 20

## HARDWARE

- F** Screw M 10 x 33.5 mm x4

## COMPONENTS

- 23** Back Drawer Board x2
- 24** Left Side Drawer Board x2
- 25** Right Side Drawer Board x2
- 26** Right Side Drawer Board x2



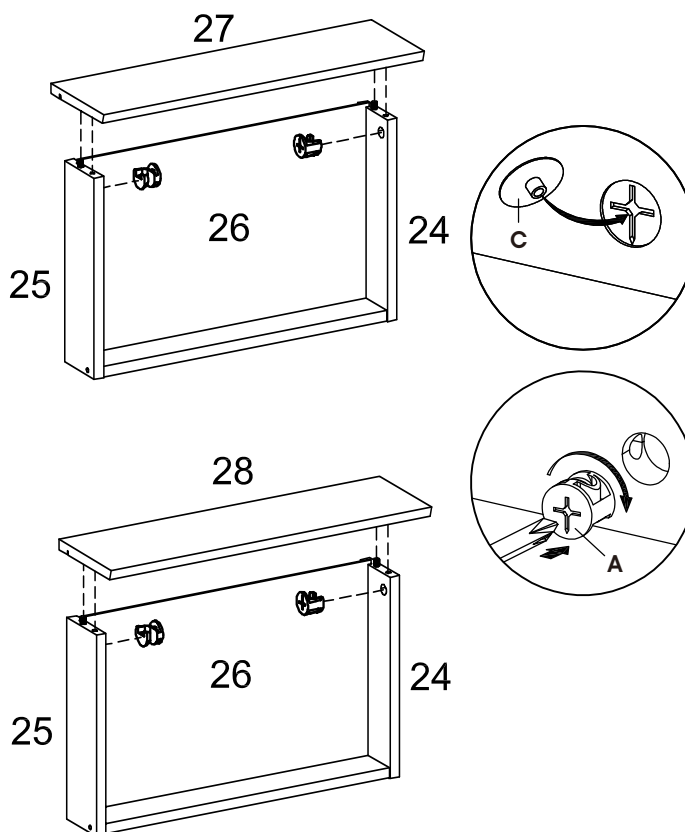
## Step 21

### HARDWARE

- A** Cam Lock Ø15 mm x4
- C** Cam Cover Ø17 mm x4

### COMPONENTS

- 24** Left Side Drawer Board x2
- 25** Right Side Drawer Board x2
- 27** Left Front Drawer Board x1
- 28** Right Front Drawer Board x1



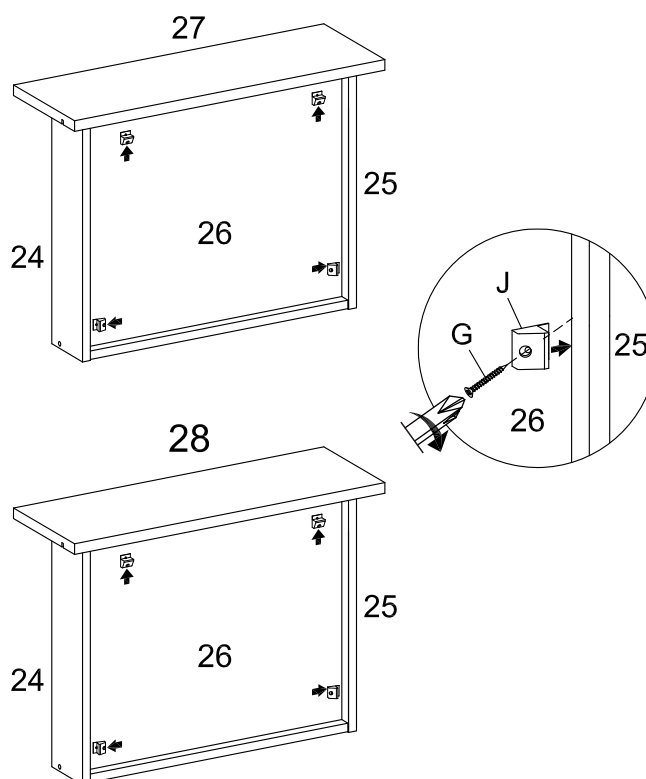
## Step 22

### HARDWARE

- G** Screw M 4 x 19 mm x8
- J** Backply Stopper x8

### COMPONENTS

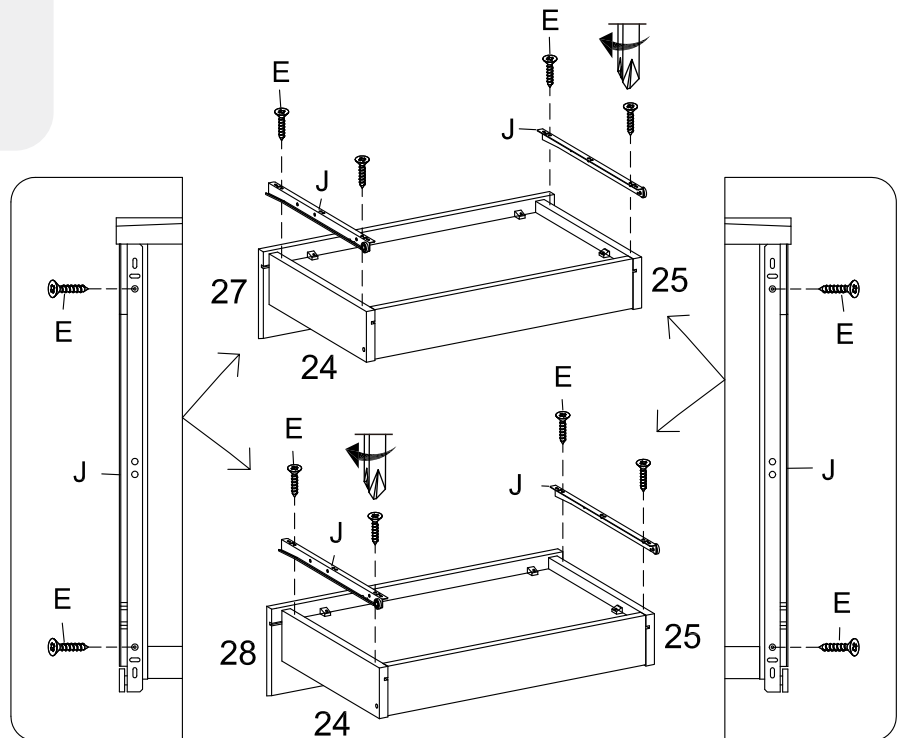
- 24** Left Side Drawer Board x2
- 25** Right Side Drawer Board x2
- 26** Bottom Drawer Board x2
- 27** Left Front Drawer Board x1
- 28** Right Front Drawer Board x1



# Step 23

## HARDWARE

- E** Screw M 6 x 13 mm      x8
- J** Drawer Runner      x2



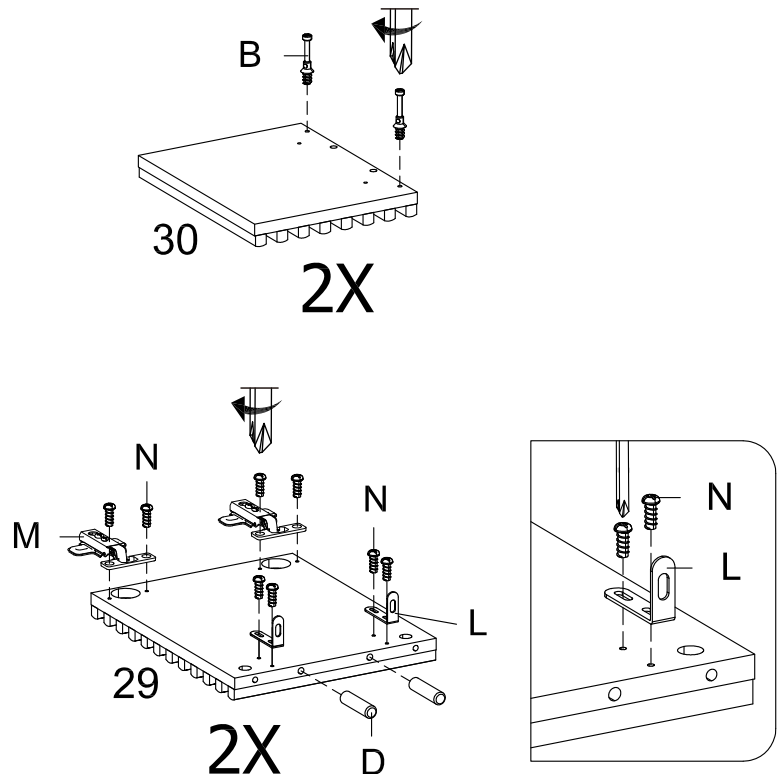
# Step 24

## HARDWARE

- B** Cam Bolt  $\text{\O}7.5 \times 32$  mm      x4
- D** Plastic Dowel  $\text{\O}8 \times 32$  mm      x4
- L** L - Plate      x4
- M** Hinge      x4
- N** Screw M 4 x 10 mm      x16

## COMPONENTS

- 29** Side Door Support      x2
- 30** Door      x2





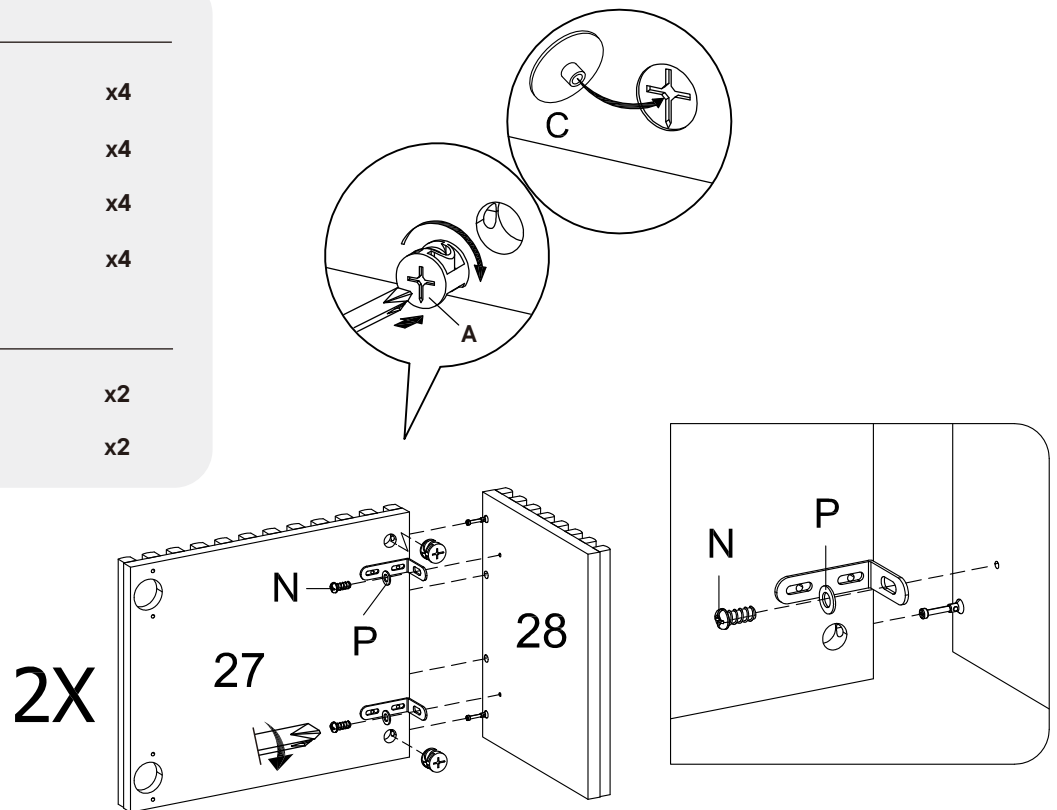
# Step 25

## HARDWARE

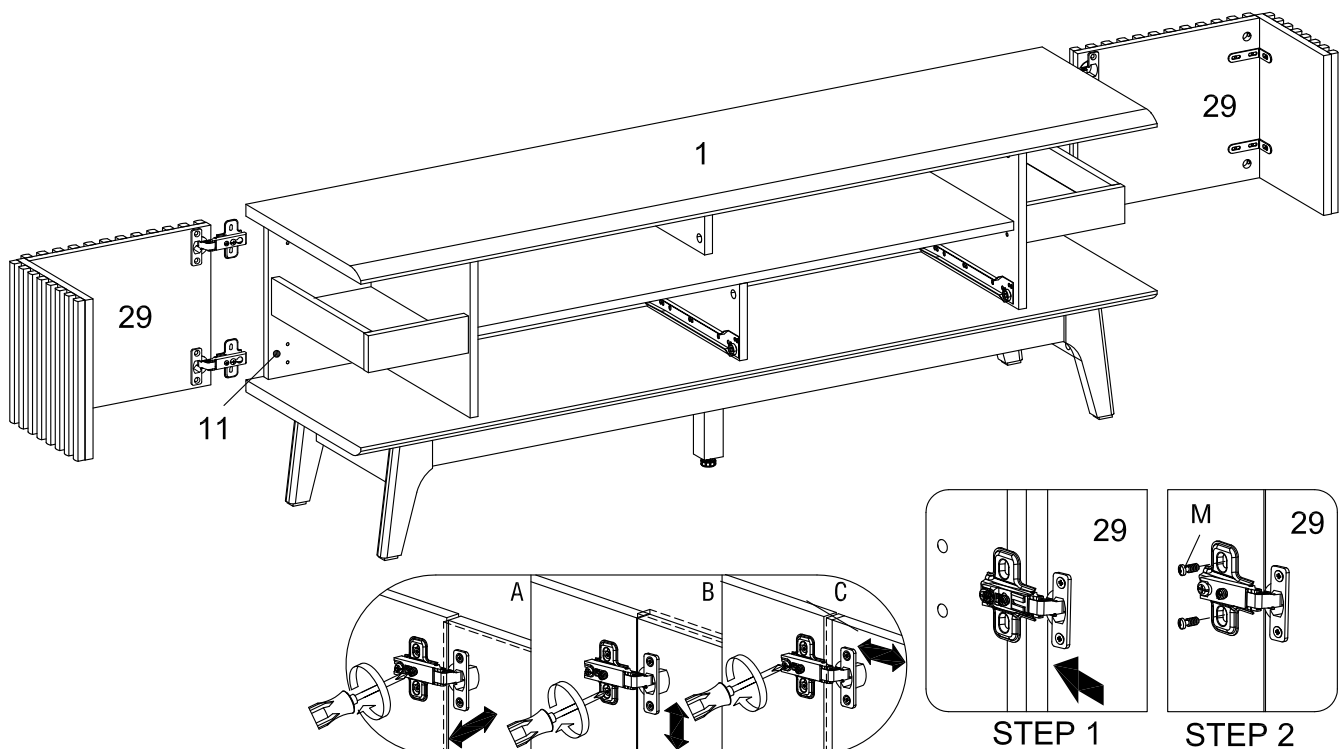
- A** Cam Lock Ø15 mm x4
- C** Cam Cover Ø17 mm x4
- N** Screw M 4 x 10 mm x4
- P** Washer Plate x4

## COMPONENTS

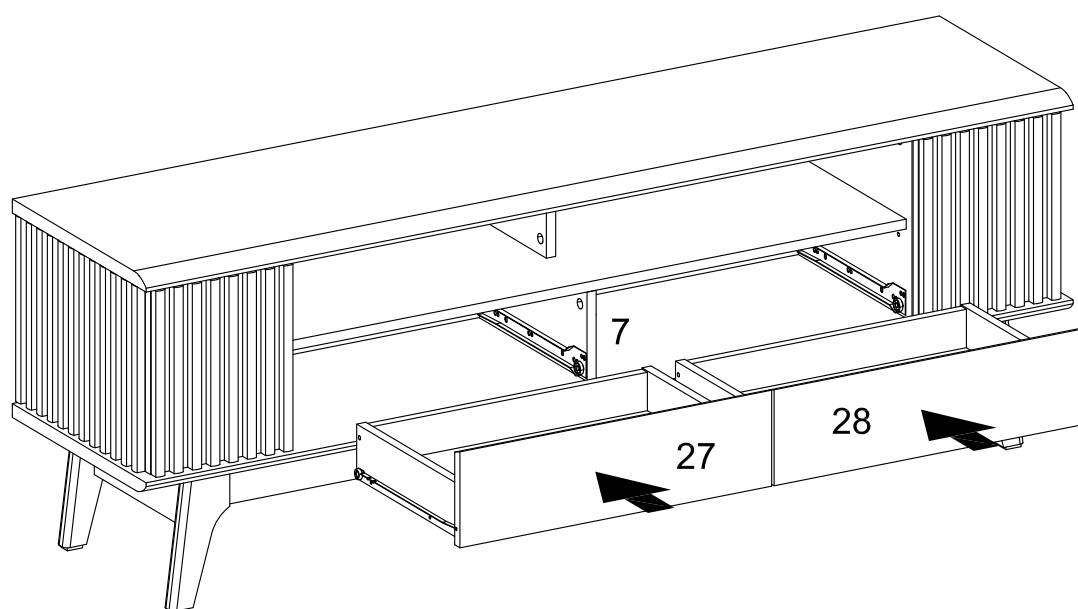
- 27** Side Door Support x2
- 28** Door x2



# Step 26



# Step 27



# Great job!

TV Stand assembly is complete

## ♥ CARING FOR YOUR ITEM

Indoor use only.

Not contract grade.

Clean using a non-abrasive cloth and a mild cleaner.

Never use harsh chemicals, as they could damage the finish or integrity of the item.

## CONNECT WITH US!

Tag us @modway\_furniture and #modway for a chance to be featured.

