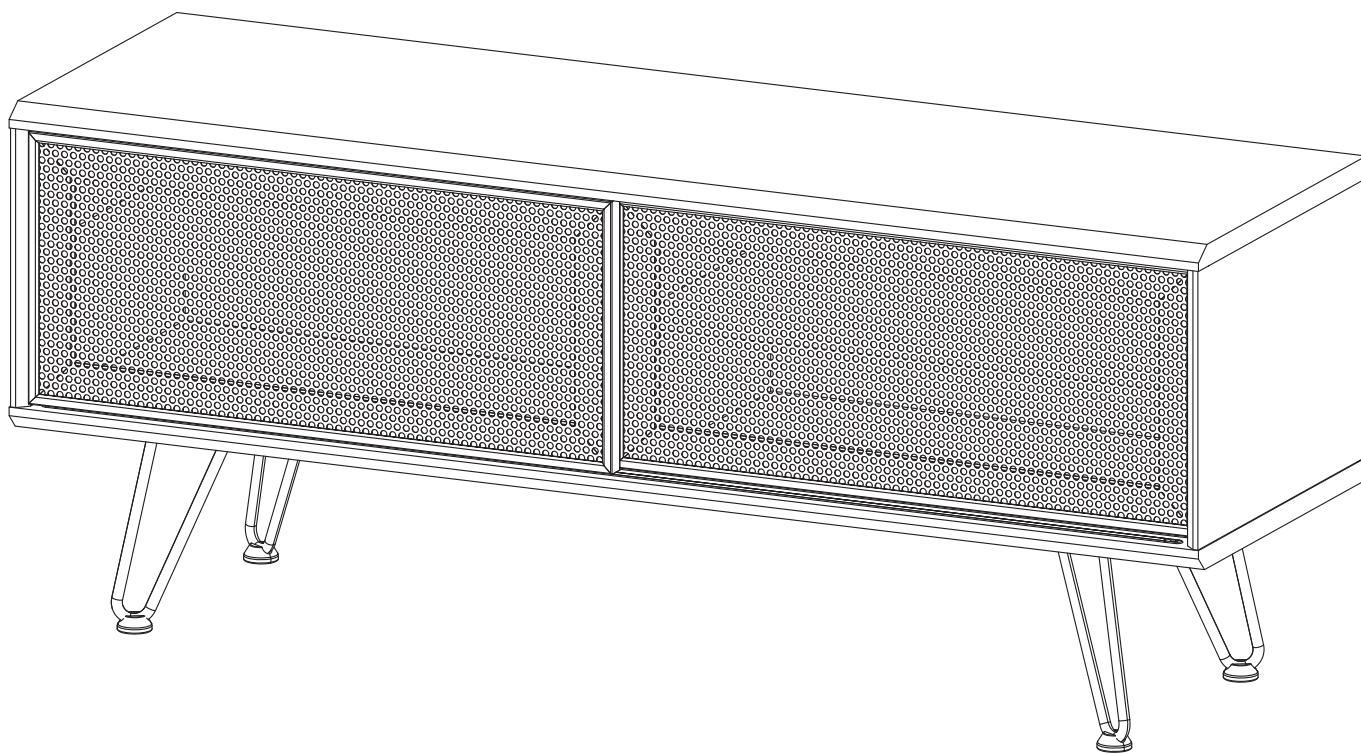


ASSEMBLY INSTRUCTIONS

EEI-6202

V0.09.08.22



Questions? Contact us!

609.256.9000 • cs@modway.com
www.modway.com

*modway



Read through all of the instructions before starting



Care instructions are listed in the last step of this manual

Only use hand tools to assemble this item. Do not use power tools. Do not tighten bolts or screws completely until all hardware is lined up and inserted into the holes.



Approx. 60 minutes assembly time



Make sure you have all parts and components before discarding any packing materials

Do not over-tighten screws and bolts to avoid stripping the hardware or cracking the item.

Assemble your item on a flat, carpeted area, with plenty of space to work. This will prevent damage and scratches to your floors or the item while you're assembling the product.

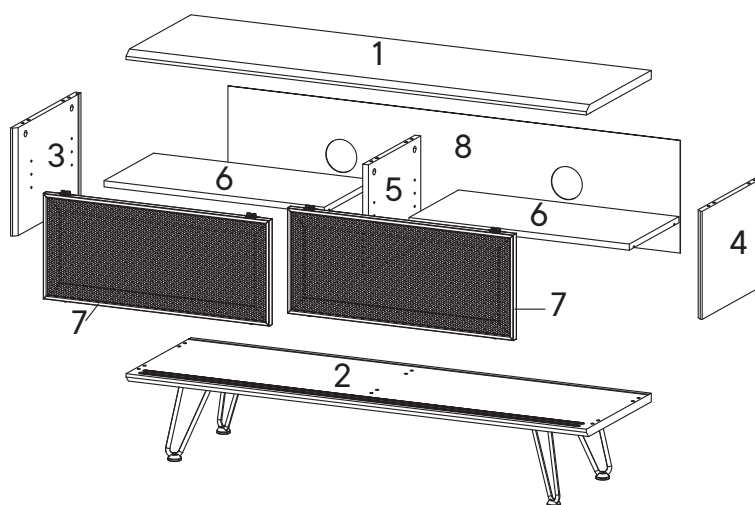


2 people recommended for assembly

Keep all components and packaging out of reach of children or animals to avoid risk of choking or suffocation.

Furniture components:

1	Top Board	x1
2	Bottom Board	x1
3	Side Board Left	x1
4	Side Board Right	x1
5	Center Board	x1
6	Adjustable Shelf	x2
7	Door	x2
8	Back Board	x1



Provided hardware:

A		Cam Bolt $\varnothing 6 \times 35$ mm	x6
B		Cam Lock $\varnothing 15$ mm	x6
C		Wood Dowel $\varnothing 8 \times 30$ mm	x12
D		Screw M 7 x 50 mm	x6
E		Screw M 3.5 x 13 mm	x16
F		Screw Cap $\varnothing 15$ mm	x6
G		Allen Key	x2
H		Wedge	x10
I		Screw M 3.5 x 15.5 mm	x10

J		Shelf Pin	x8
K		Silicon Bumper	x4
L		Screw M 4.5 x 12.5 mm	x16
M		Floor Pad	x4
N		Sliding Top	x4
O		Sliding Bottom	x4
P		Screw M 6 x 12.5 mm	x10
LM19A1		Leg Hairpin	x4
US90		Anti Deflection Bar	x1

What you need:



Wait!

Missing parts or hardware? Need assistance?
Contact us before returning your item. We're here to help!
609.256.9000 • cs@modway.com

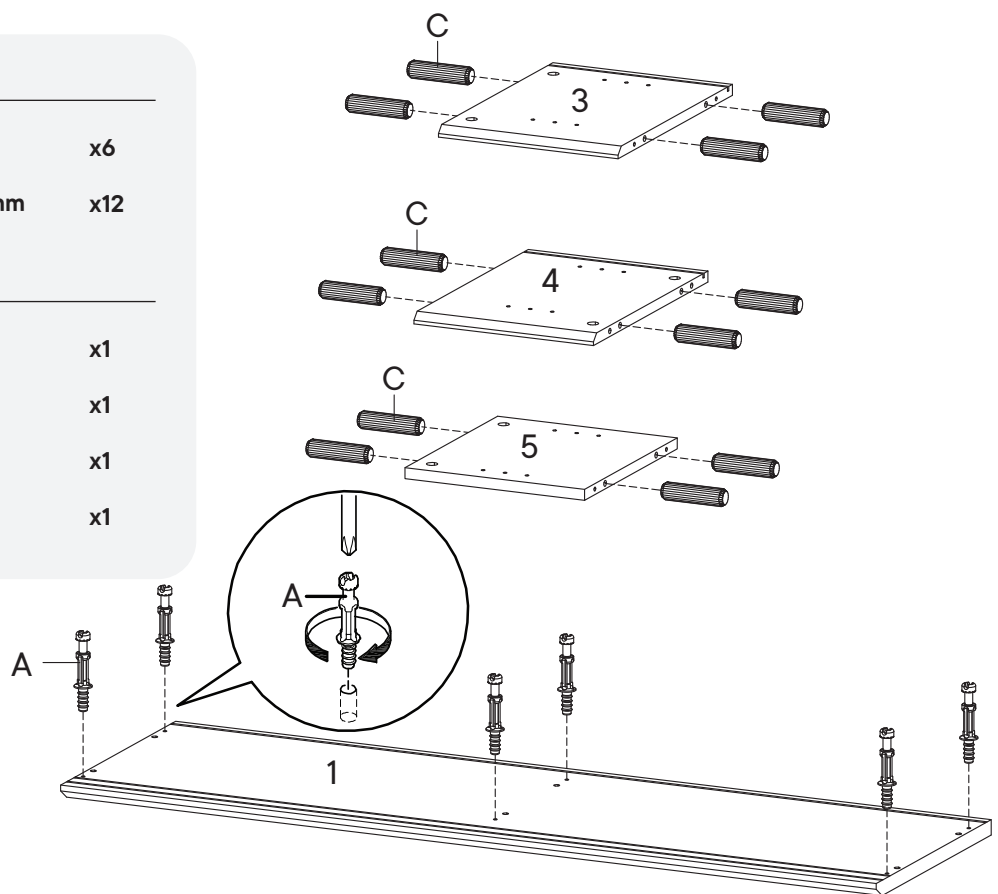
Step 1

HARDWARE

- A** Cam Bolt $\varnothing 6 \times 35$ mm x6
- C** Wood Dowel $\varnothing 8 \times 30$ mm x12

COMPONENTS

- 1** Top Board x1
- 3** Side Board Left x1
- 4** Side Board Right x1
- 5** Center Board x1



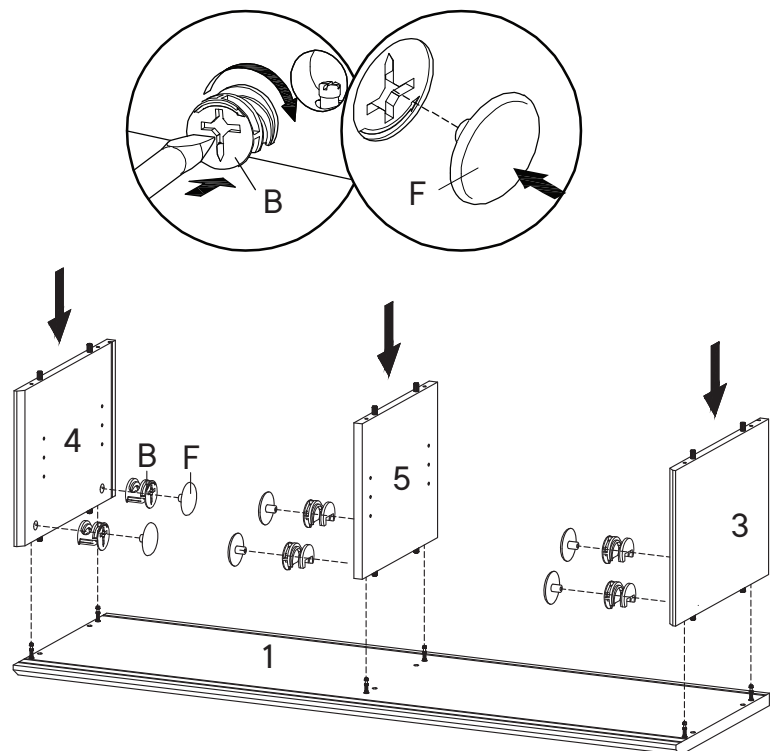
Step 2

HARDWARE

- B** Cam Lock $\varnothing 15$ mm x6
- F** Screw Cap $\varnothing 15$ mm x6

COMPONENTS

- 1** Top Board x1
- 3** Side Board Left x1
- 4** Side Board Right x1
- 5** Center Board x1



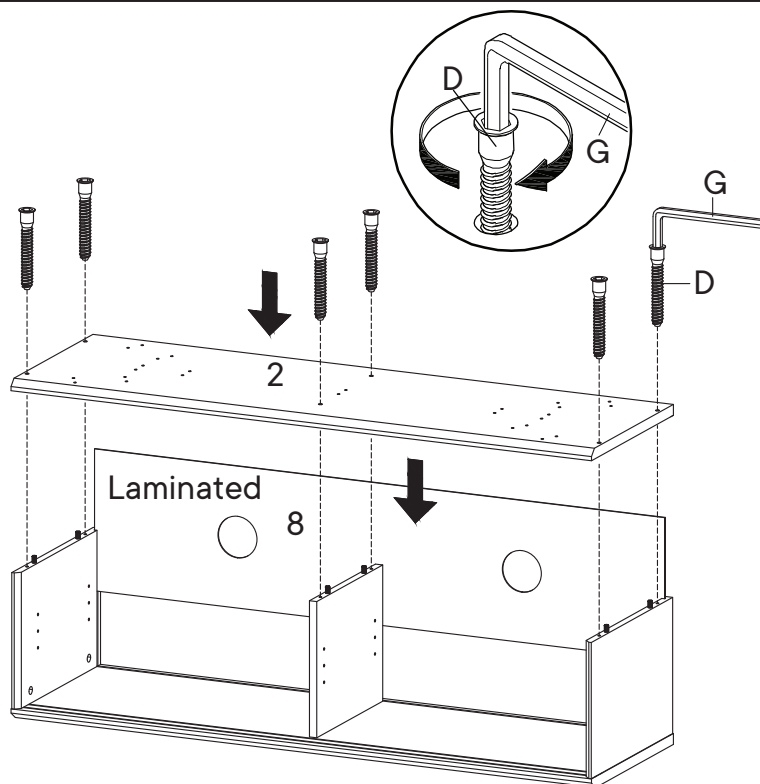
Step 3

HARDWARE

- D** Screw M 7 x 50 mm x6
- G** Allen Key x1

COMPONENTS

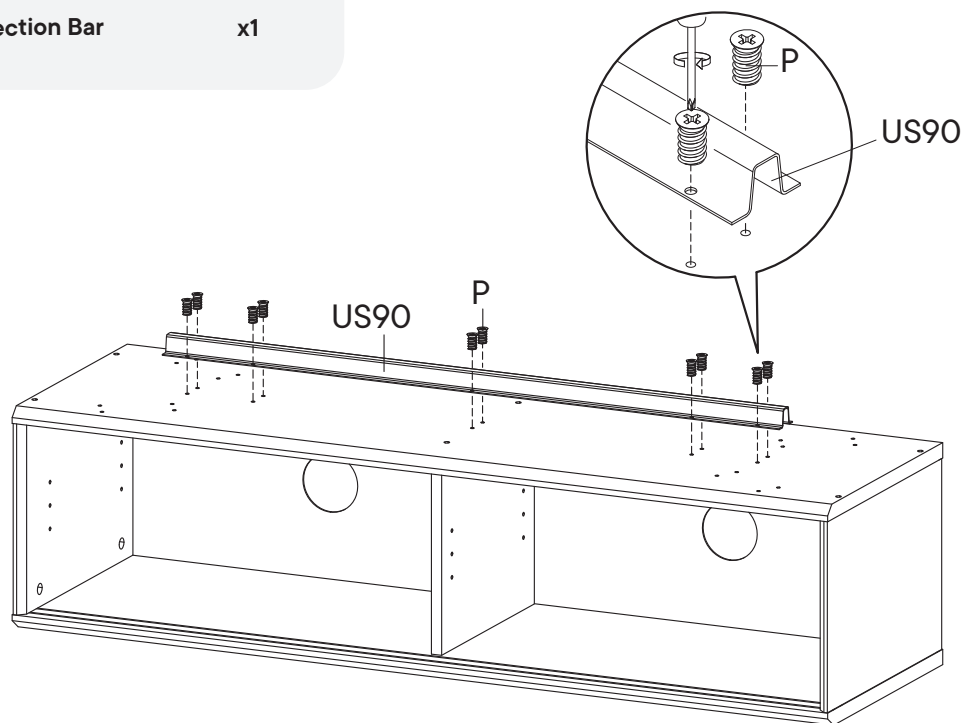
- 2** Bottom Board x1
- 8** Back Board x1



Step 4

HARDWARE

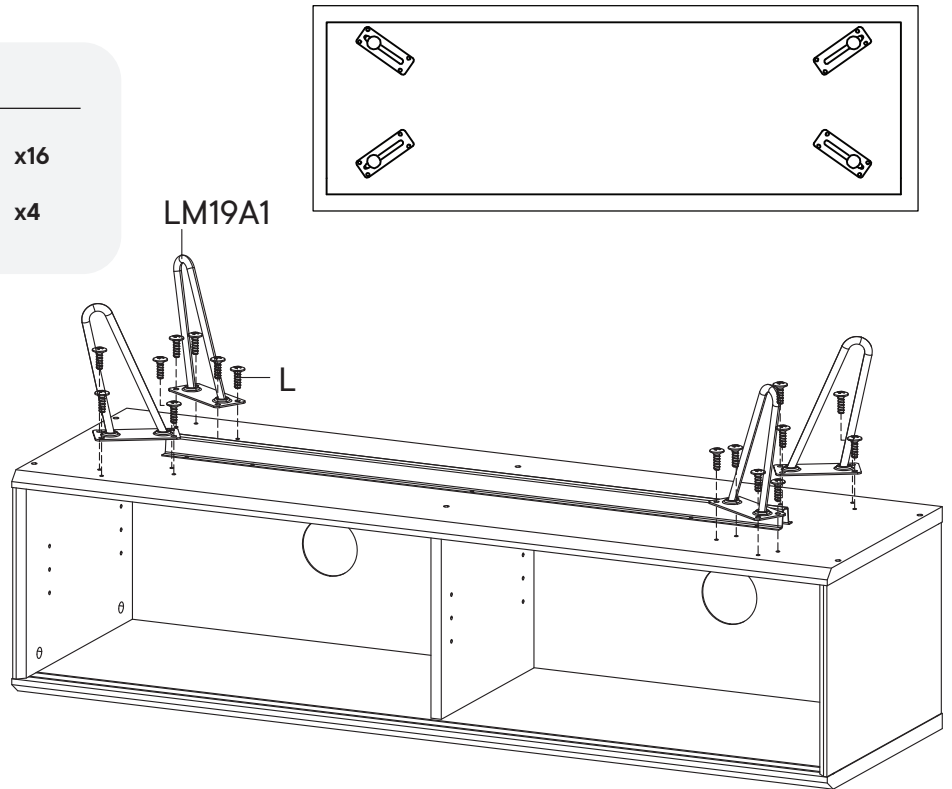
- P** Screw M 6 x 12.5 mm x10
- US90** Anti Deflection Bar x1



Step 5

HARDWARE

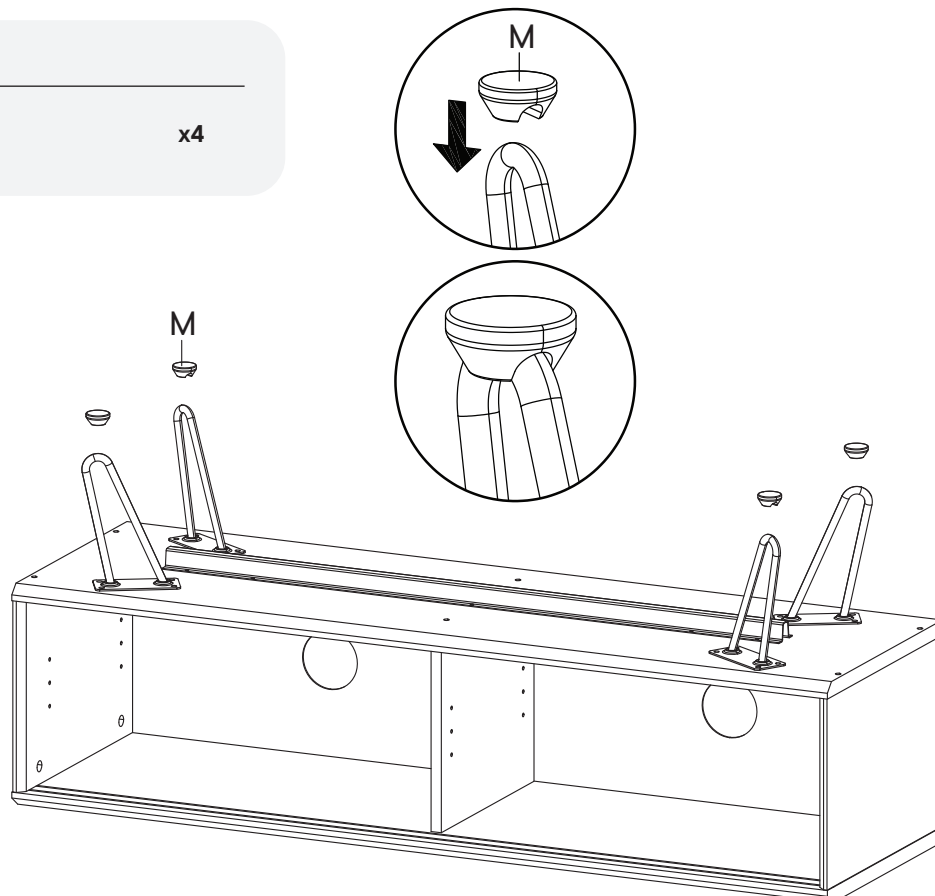
- L** Screw M 4.5 x 12.5 mm x16
- LM19A1** Leg Hairpin x4



Step 6

HARDWARE

- M** Floor Pad x4



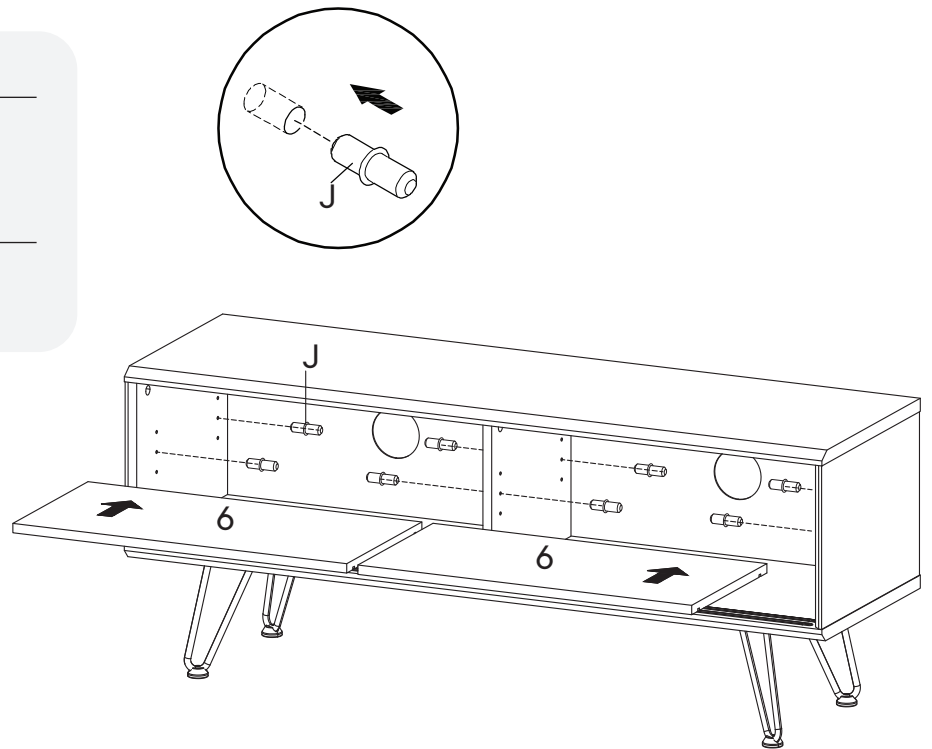
Step 7

HARDWARE

J Shelf Pin x8

COMPONENTS

6 Adjustable Shelf x2



Step 8

HARDWARE

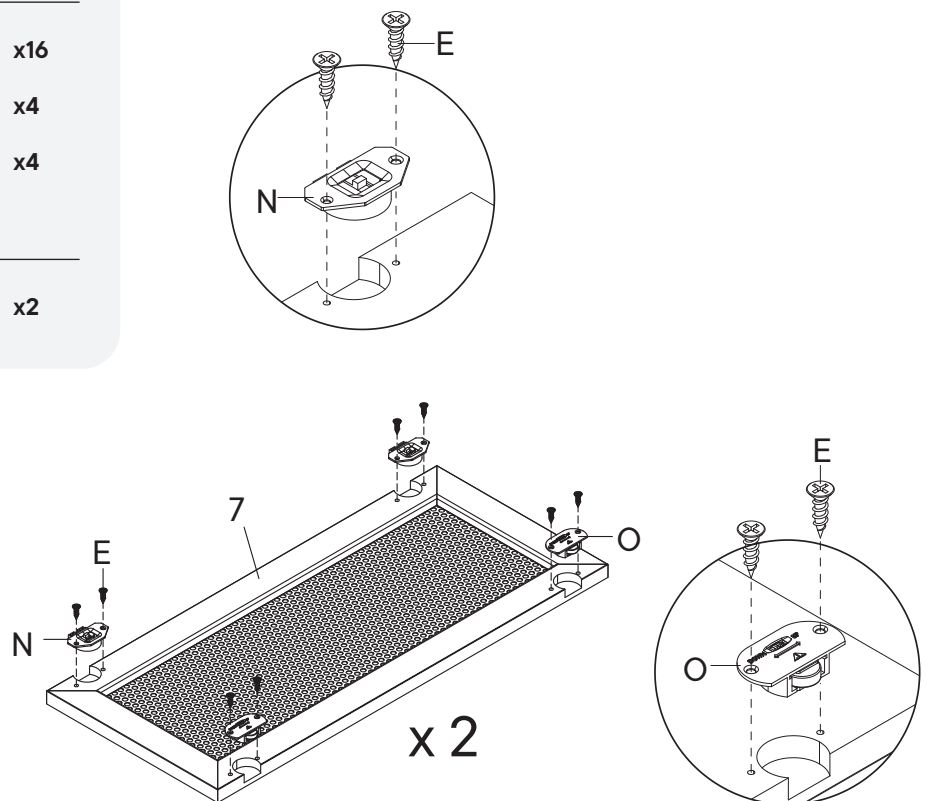
E Screw M 3.5 x 13 mm x16

N Sliding Top x4

O Sliding Bottom x4

COMPONENTS

7 Door x2



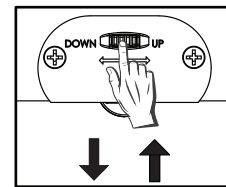
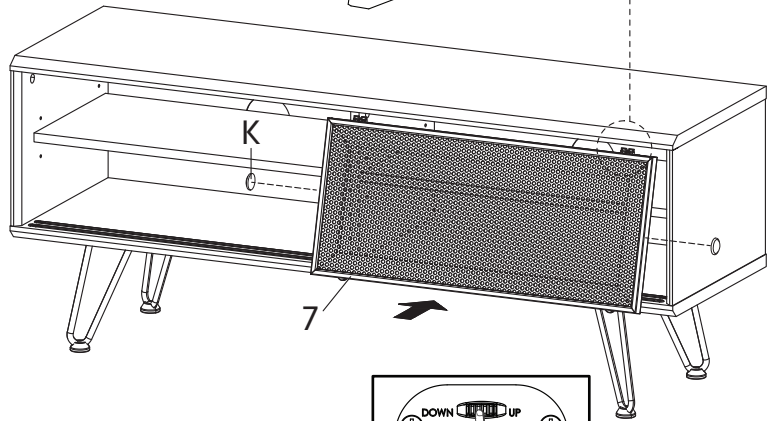
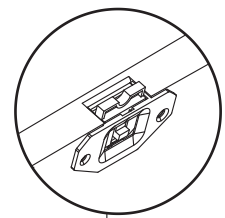
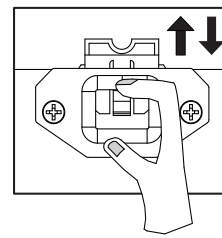
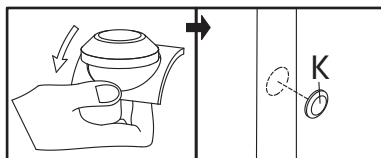
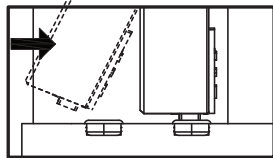
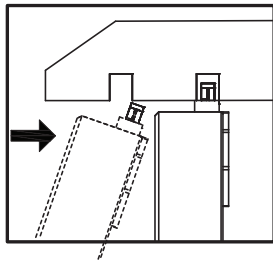
Step 9

HARDWARE

K Silicon Bumper x2

COMPONENTS

7 Door x1



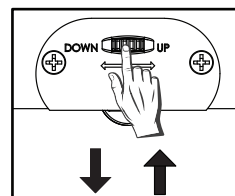
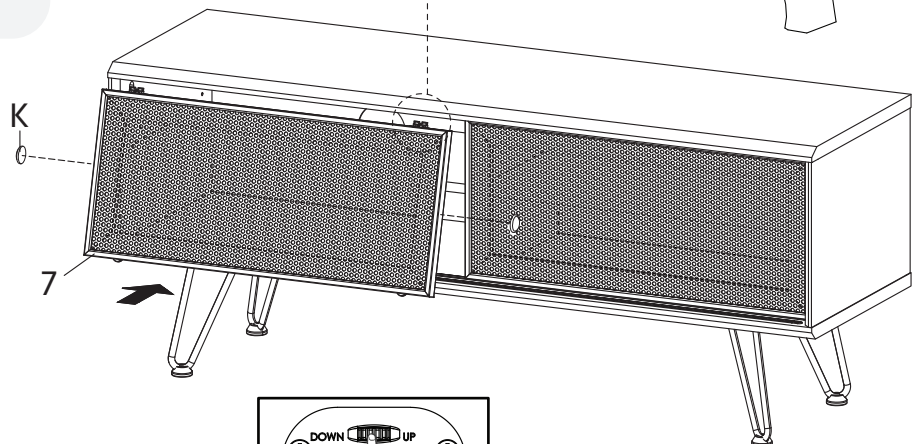
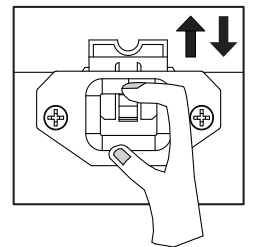
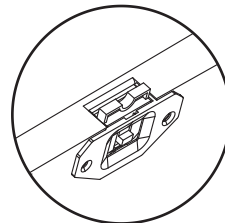
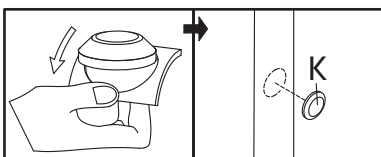
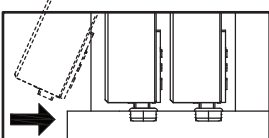
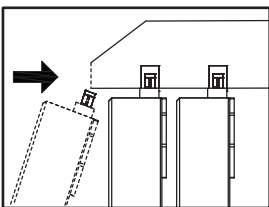
Step 10

HARDWARE

K Silicon Bumper x2

COMPONENTS

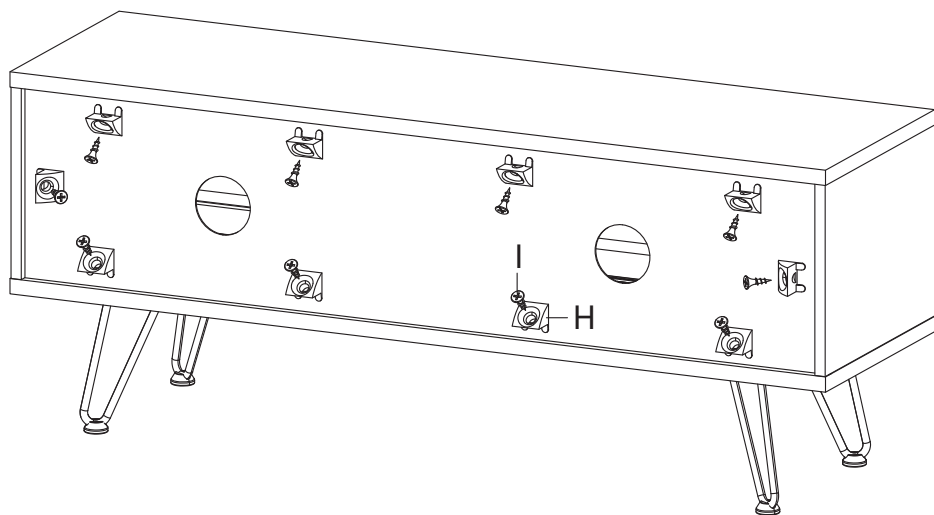
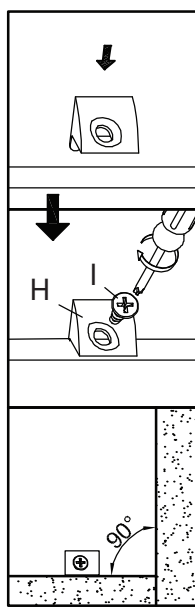
7 Door x1



Step 11

HARDWARE

- H** Wedge x10
- I** Screw M 3.5 x 15.5 mm x10



Great job!

Tv Stand assembly is complete.

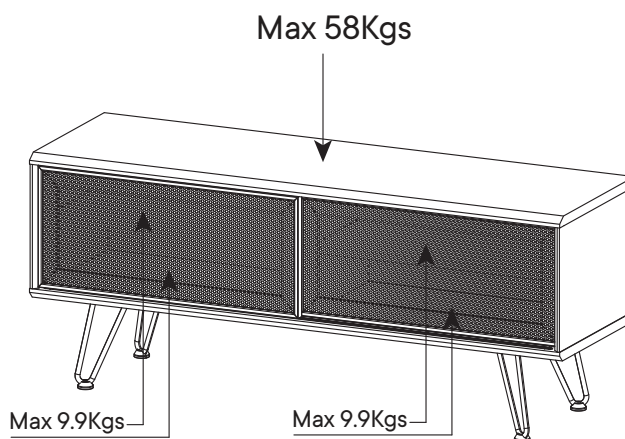
♥ CARING FOR YOUR ITEM

Indoor use only.

Not contract grade.

Clean using a non-abrasive cloth and a mild cleaner.

Never use harsh chemicals, as they could damage the finish or integrity of the item.



CONNECT WITH US!   

Tag us @modway_furniture and #modway for a chance to be featured.