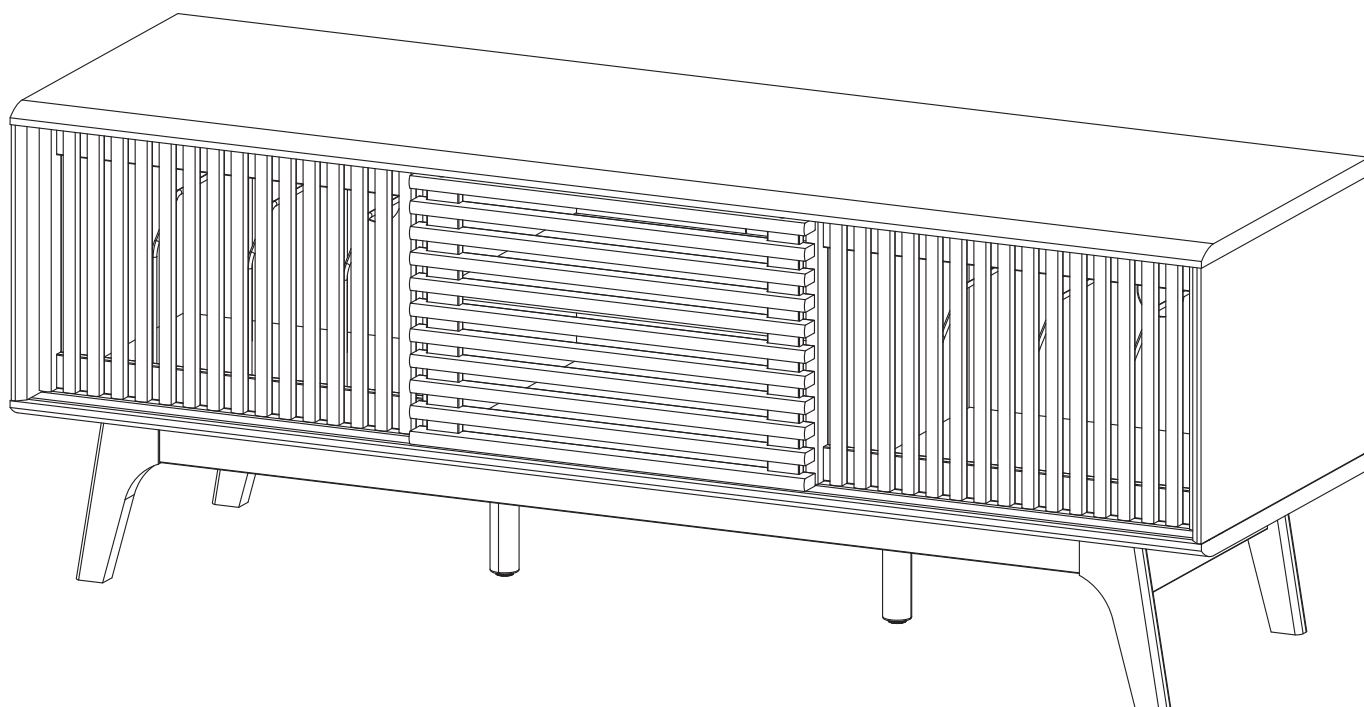


ASSEMBLY INSTRUCTIONS

EEI-6180

V0.09.09.22



Questions? Contact us!

609.256.9000 • cs@modway.com
www.modway.com

*modway



Read through all of the instructions before starting



Care instructions are listed in the last step of this manual



Approx. 60 minutes assembly time



Make sure you have all parts and components before discarding any packing materials



2 people recommended for assembly

Only use hand tools to assemble this item. Do not use power tools. Do not tighten bolts or screws completely until all hardware is lined up and inserted into the holes.

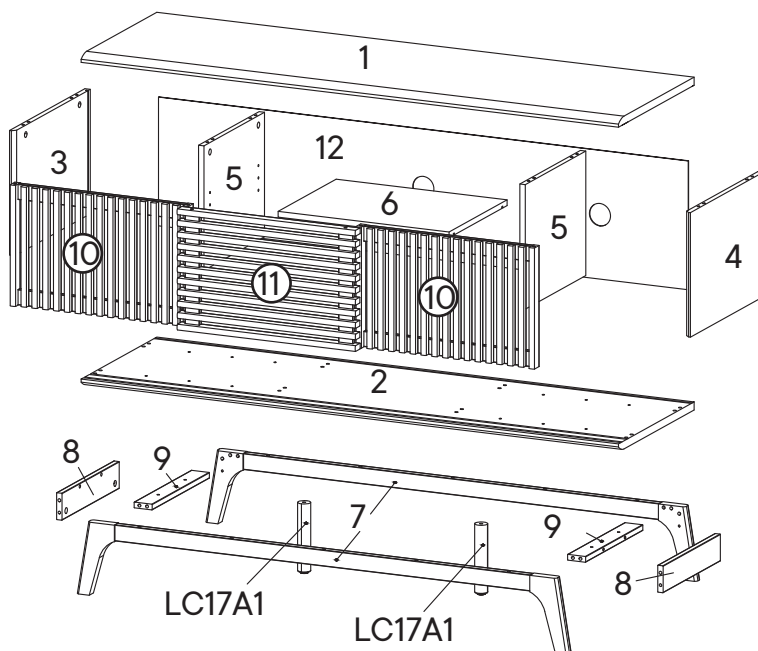
Do not over-tighten screws and bolts to avoid stripping the hardware or cracking the item.

Assemble your item on a flat, carpeted area, with plenty of space to work. This will prevent damage and scratches to your floors or the item while you're assembling the product.

Keep all components and packaging out of reach of children or animals to avoid risk of choking or suffocation.

Furniture components:

1	Top Board	x1	10	Frame Door 1	x2
2	Bottom Board	x1	11	Frame Door 2	x1
3	Side Board Left	x1	12	Back Board	x1
4	Side Board Right	x1	LC17A1	Center Leg	x2
5	Center Board	x2			
6	Adjustable Shelf	x1			
7	Assembly Leg	x2			
8	Support Board 1	x2			
9	Support Board 2	x2			



Provided hardware:

A		Cam Bolt Ø6 x 35 mm	x12
B		Cam Lock Ø15 mm	x12
C		Wood Dowel Ø8 x 30 mm	x36
D		Screw M 7 x 50 mm	x8
E		Allen Key	x2
F		Shelf Pin	x4
G		Silicon Bumper	x5
H		Pin Sliding Top	x6
I		Pin Sliding Bottom	x6

J		Screw M 4.5 x 12.5 mm	x8
K		Wedge	x12
L		Screw M 3.5 x 15.5 mm	x12
M		Screw Cap Ø15 mm	x8
N		Screw M 6.4 x 25 mm	x4
O		Screw M 6.4 x 53 mm	x6
P		Floor Protector	x4
Q		Divider Wire	x6
PM2		Mounting Plate	x2

What you need:

Phillips Head Screwdriver

Wait!

Missing parts or hardware? Need assistance?
Contact us before returning your item. We're here to help!
609.256.9000 • cs@modway.com

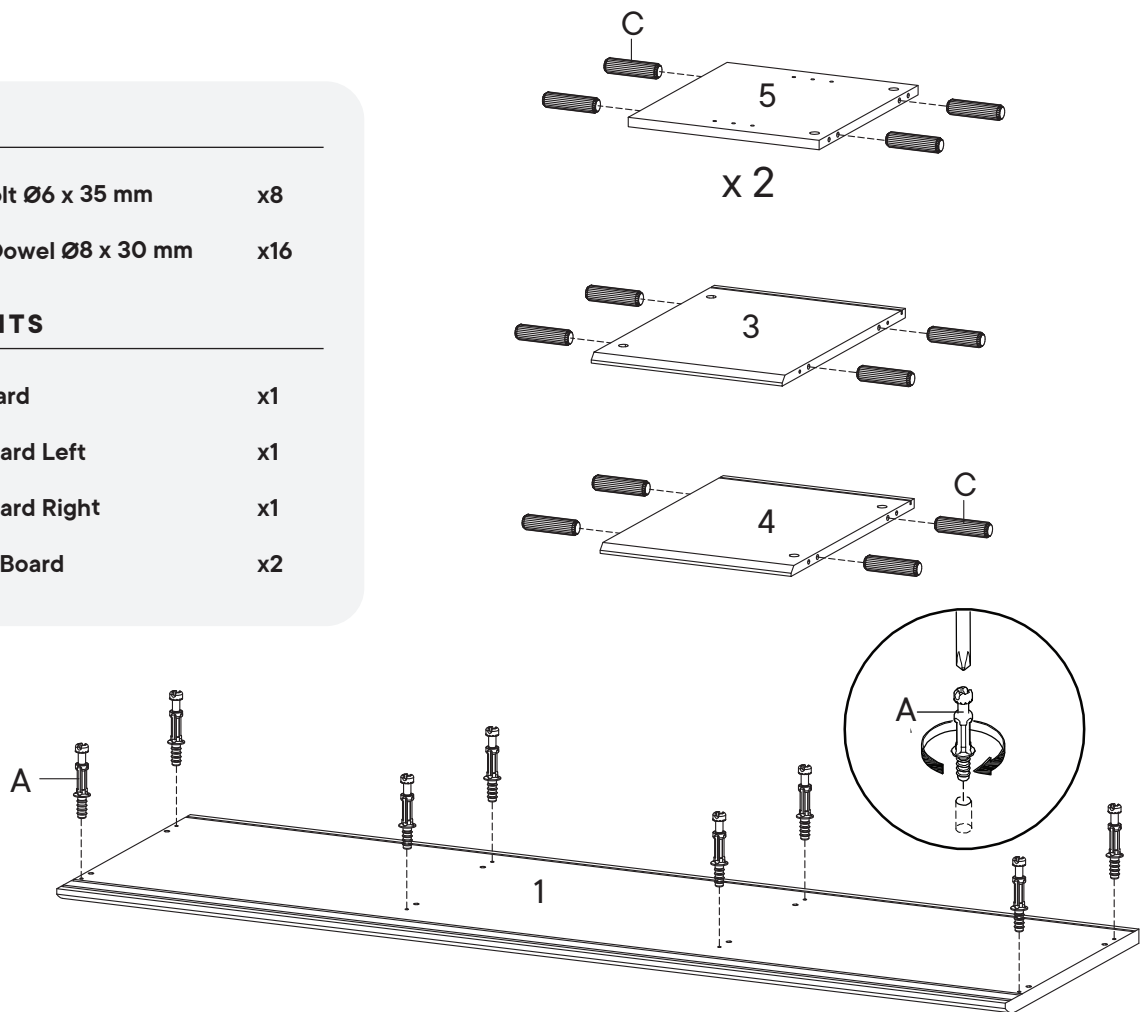
Step 1

HARDWARE

- A** Cam Bolt Ø6 x 35 mm x8
- C** Wood Dowel Ø8 x 30 mm x16

COMPONENTS

- 1** Top Board x1
- 3** Side Board Left x1
- 4** Side Board Right x1
- 5** Center Board x2



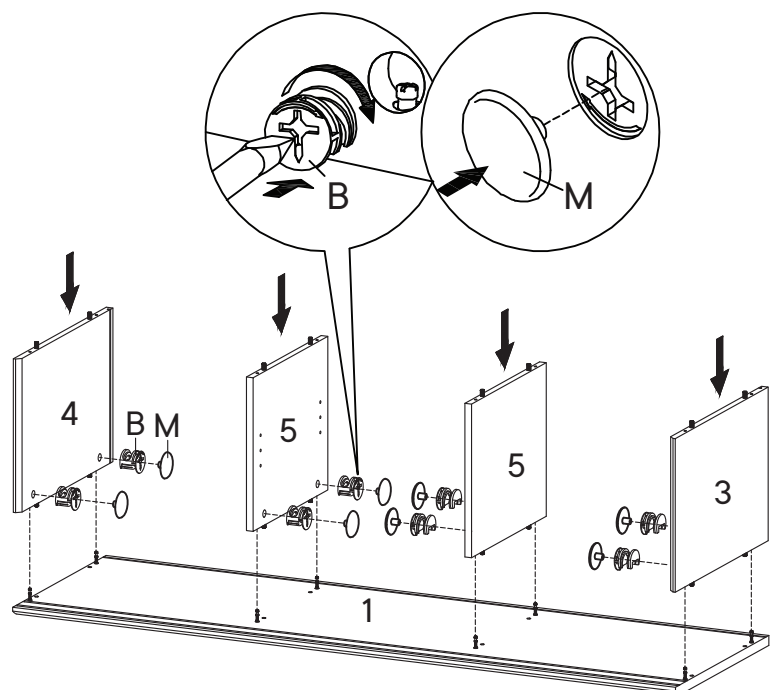
Step 2

HARDWARE

- B** Cam Lock Ø15 mm x8
- M** Screw Cap Ø15 mm x8

COMPONENTS

- 1** Top Board x1
- 3** Side Board Left x1
- 4** Side Board Right x1
- 5** Center Board x2



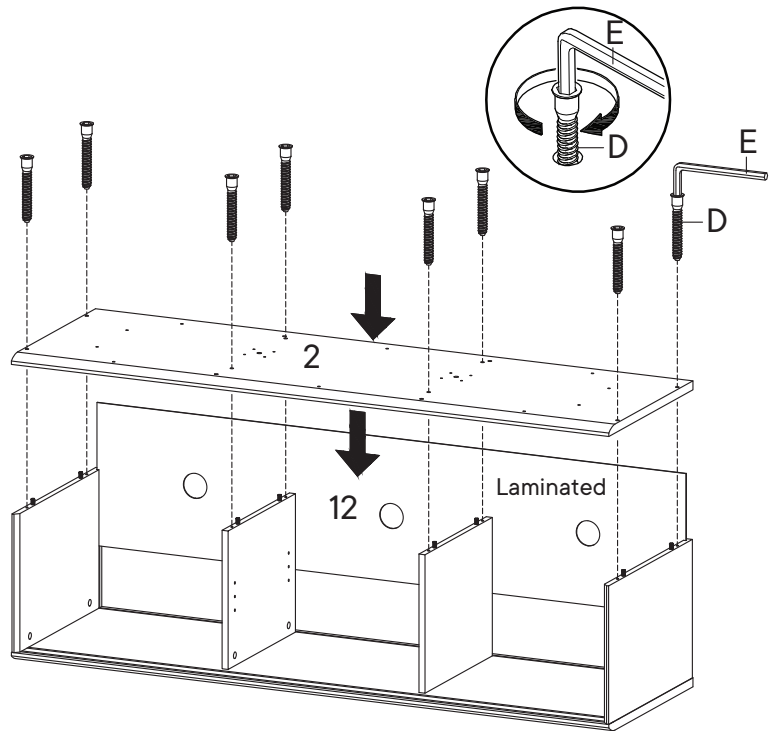
Step 3

HARDWARE

- D** Screw M 7 x 50 mm x8
- E** Allen Key x1

COMPONENTS

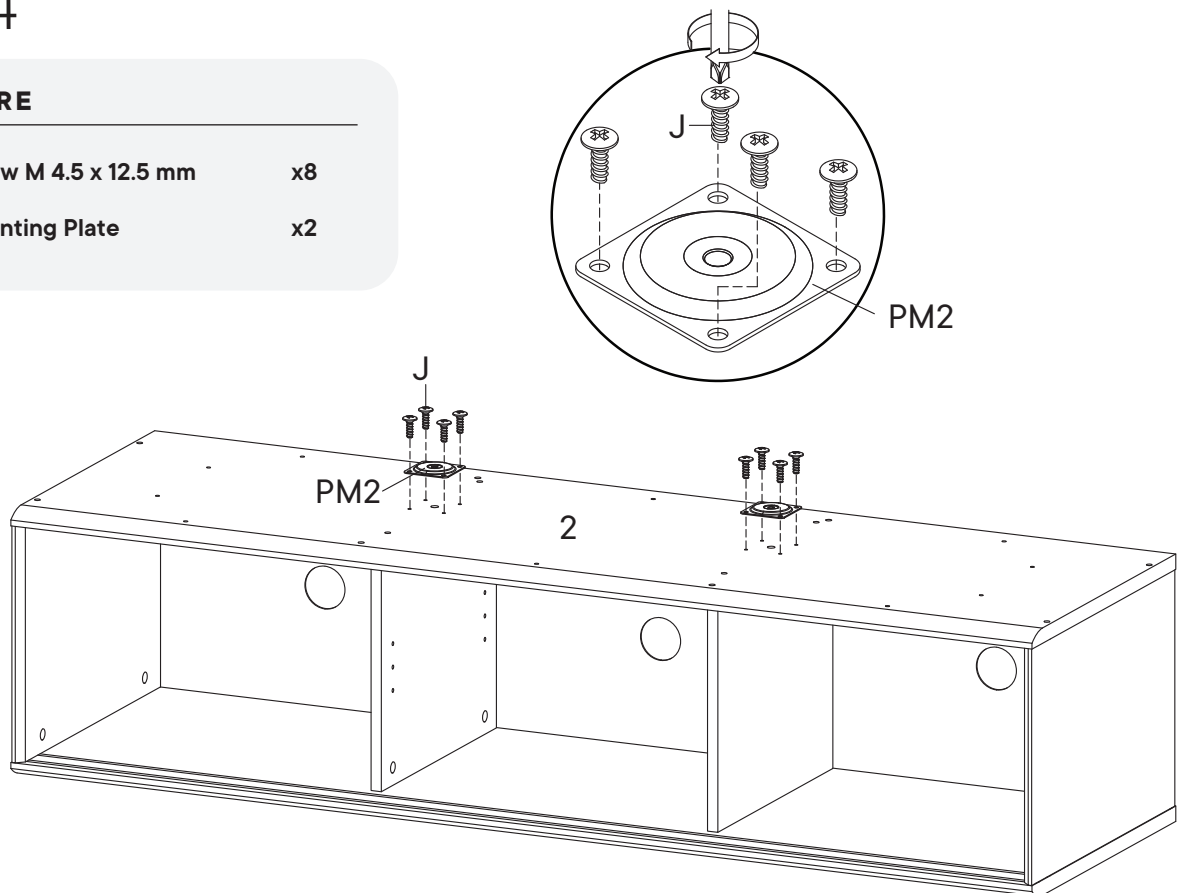
- 2** Bottom Board x1
- 12** Back Board x1



Step 4

HARDWARE

- J** Screw M 4.5 x 12.5 mm x8
- PM2** Mounting Plate x2



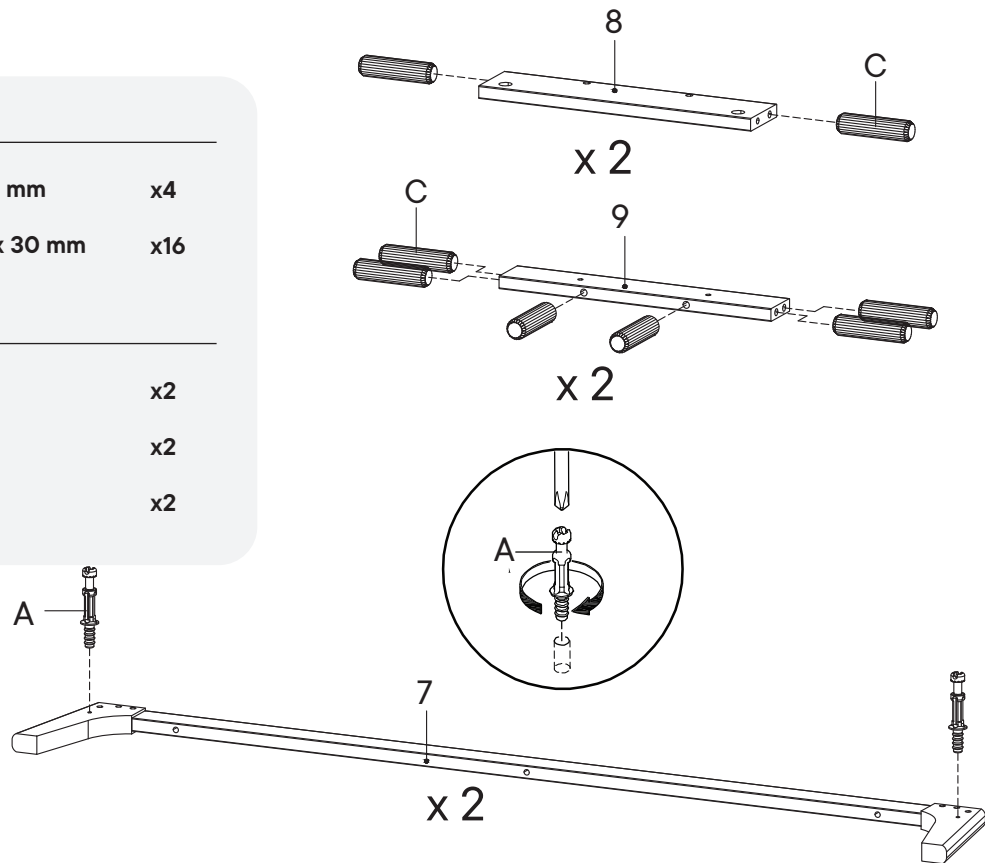
Step 5

HARDWARE

- A** Cam Bolt Ø6 x 35 mm x4
- C** Wood Dowel Ø8 x 30 mm x16

COMPONENTS

- 7** Assembly Leg x2
- 8** Support Board 1 x2
- 9** Support Board 2 x2



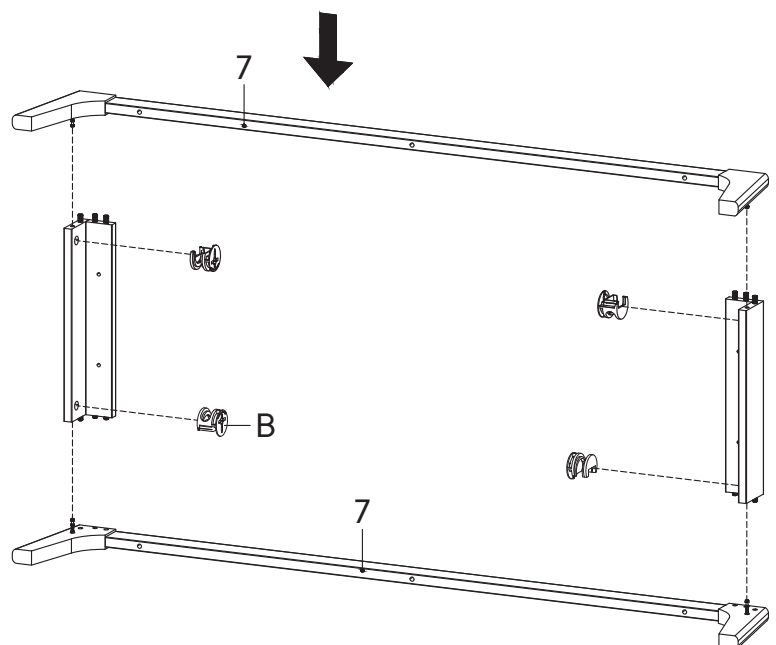
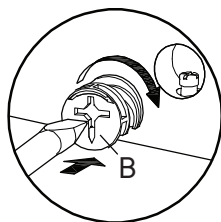
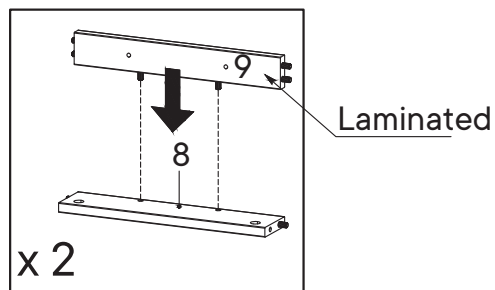
Step 6

HARDWARE

- B** Cam Lock Ø15 mm x4

COMPONENTS

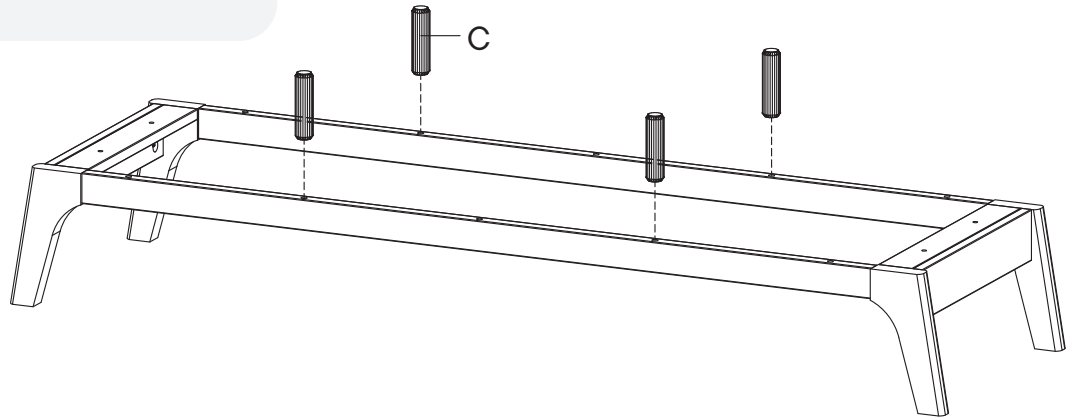
- 7** Assembly Leg x2
- 8** Support Board 1 x2
- 9** Support Board 2 x2



Step 7

HARDWARE

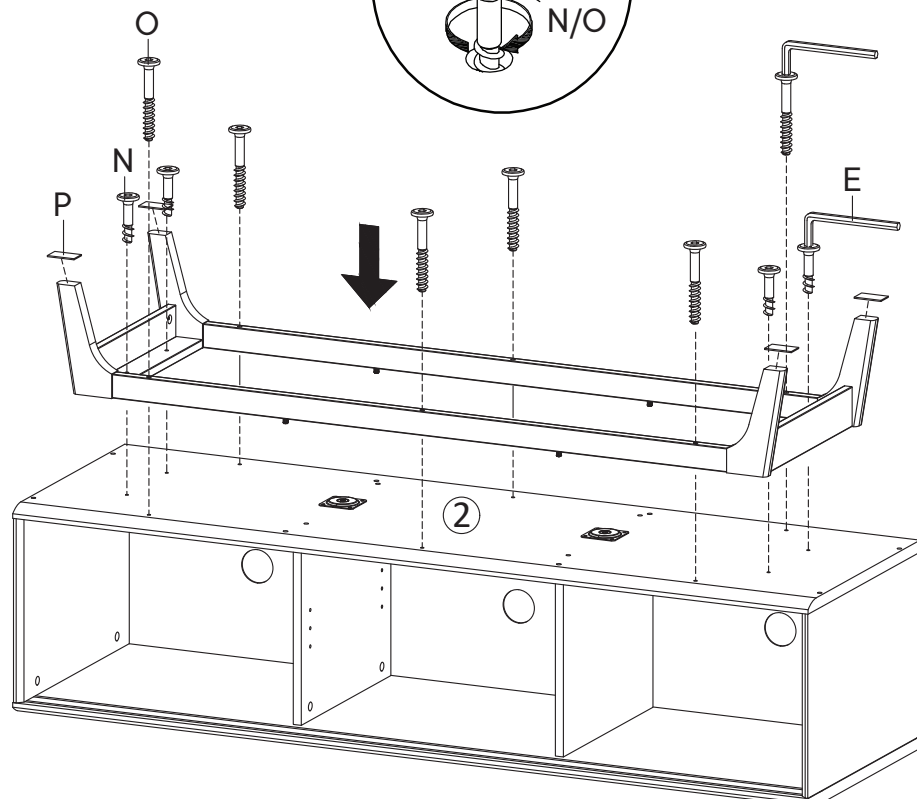
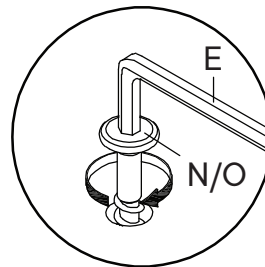
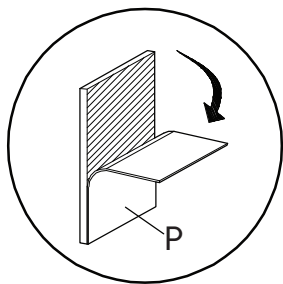
- C** Wood Dowel Ø8 x 30 mm x4



Step 8

HARDWARE

- E** Allen Key x1
- N** Screw M 6.4 x 25 mm x4
- O** Screw M 6.4 x 53 mm x6
- P** Floor Protector x4

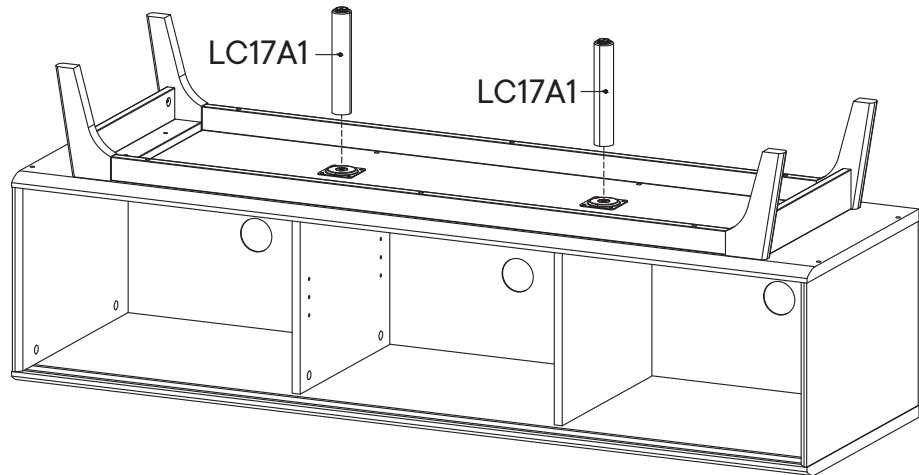
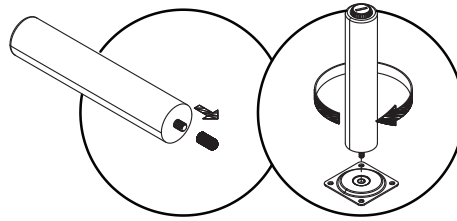


Step 9

COMPONENT

LC17A1 Center Leg

x2

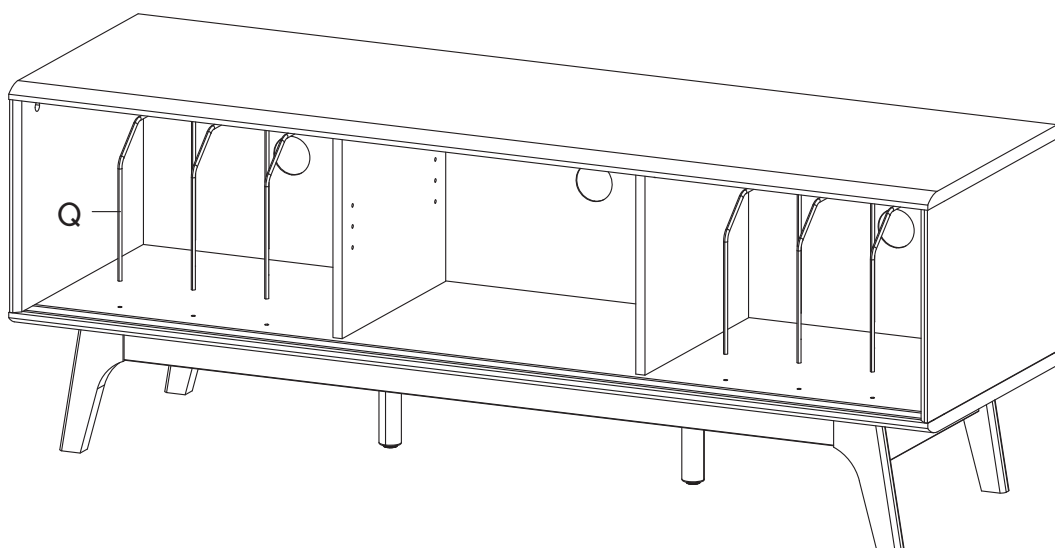


Step 10

HARDWARE

Q Divider Wire

x6



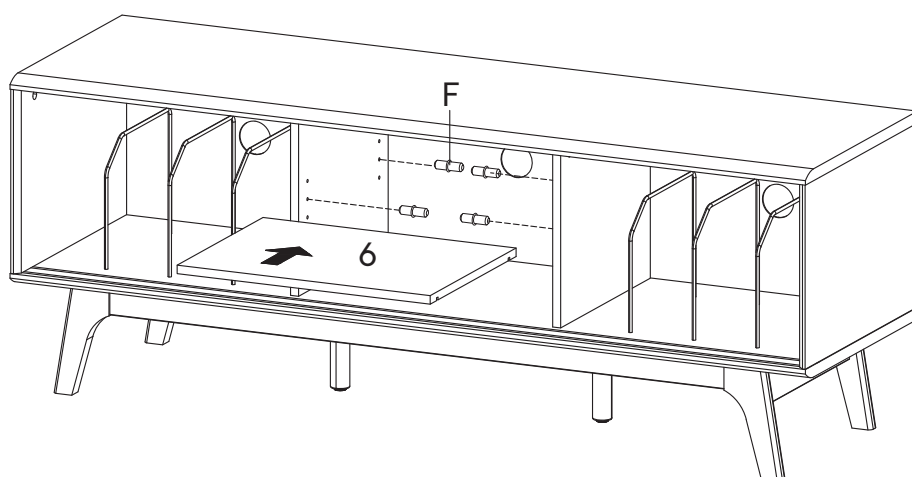
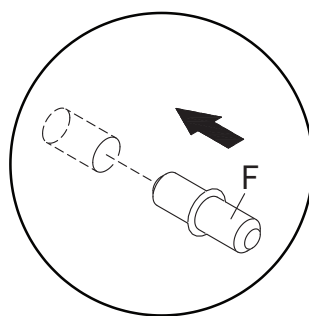
Step 11

HARDWARE

F Shelf Pin x4

COMPONENTS

6 Adjustable Shelf x1



Step 12

HARDWARE

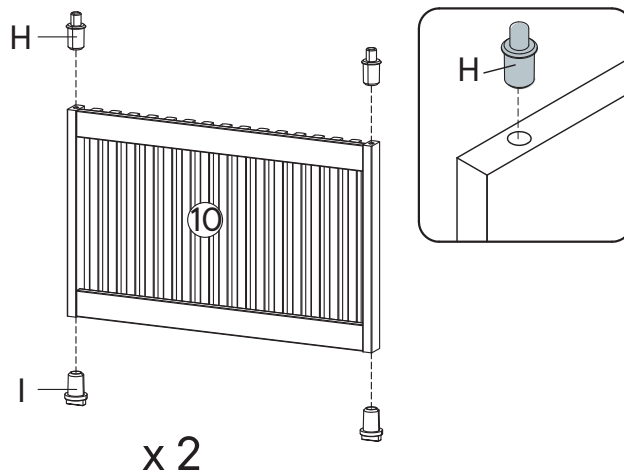
H Pin Sliding Top x6

I Pin Sliding Bottom x6

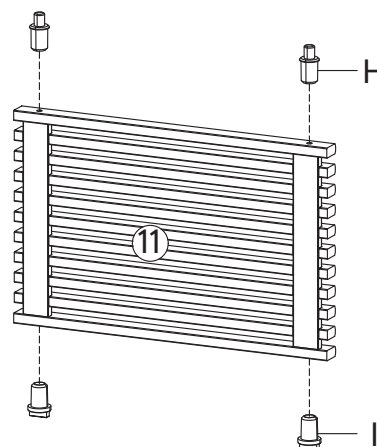
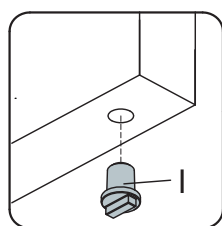
COMPONENTS

10 Frame Door 1 x2

11 Frame Door 2 x1



x 2



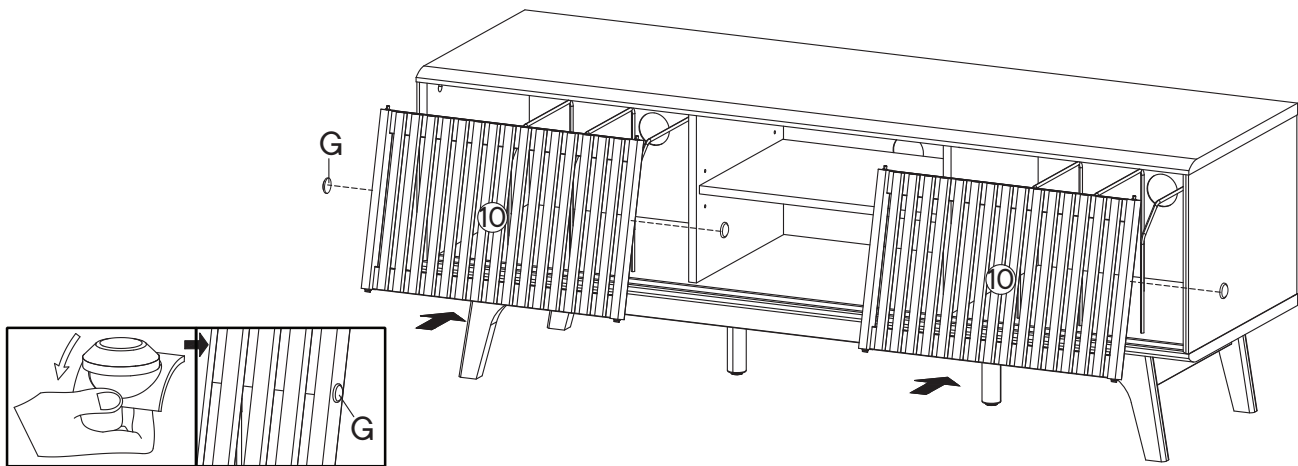
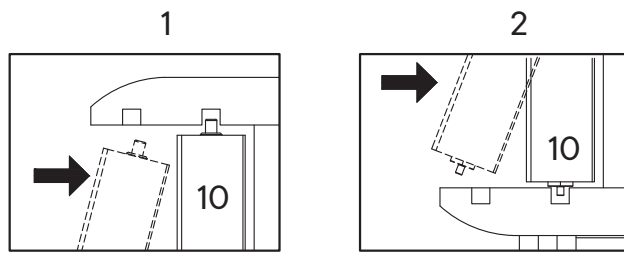
Step 13

HARDWARE

G Silicon Bumper x3

COMPONENTS

10 Frame Door 1 x2



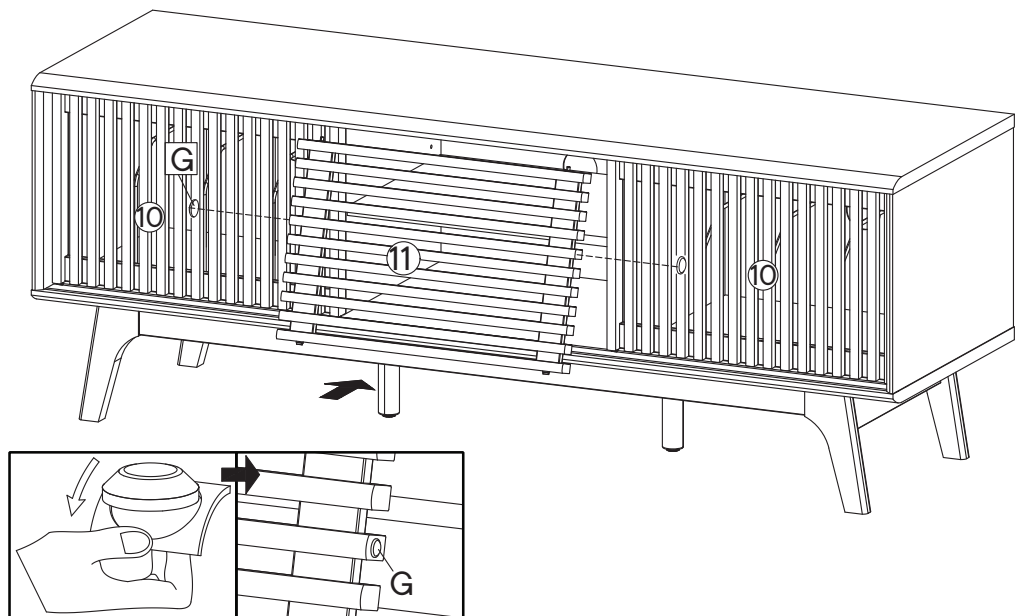
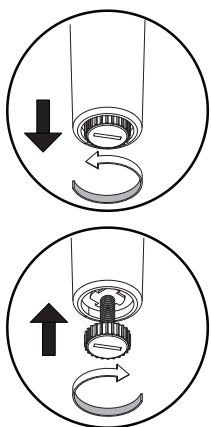
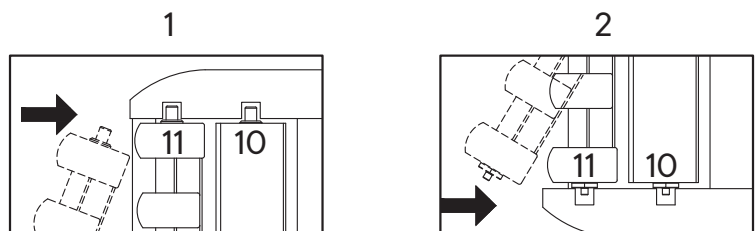
Step 14

HARDWARE

G Silicon Bumper x2

COMPONENTS

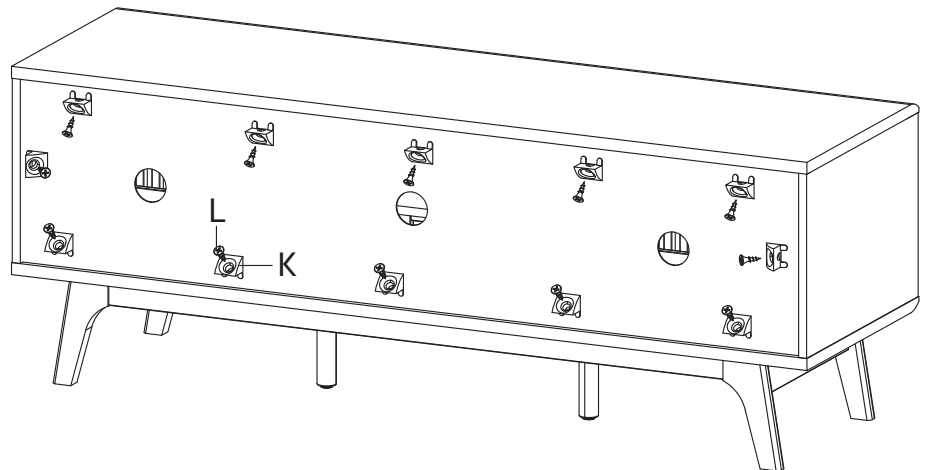
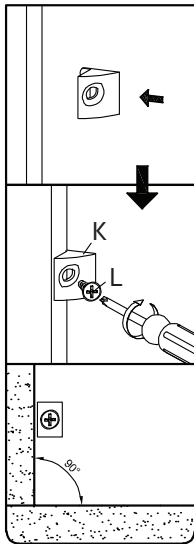
11 Frame Door 2 x1



Step 15

HARDWARE

- K** Wedge x12
- L** Screw M 3.5 x 15.5 mm x12



Great job!

Tv Stand assembly is complete.

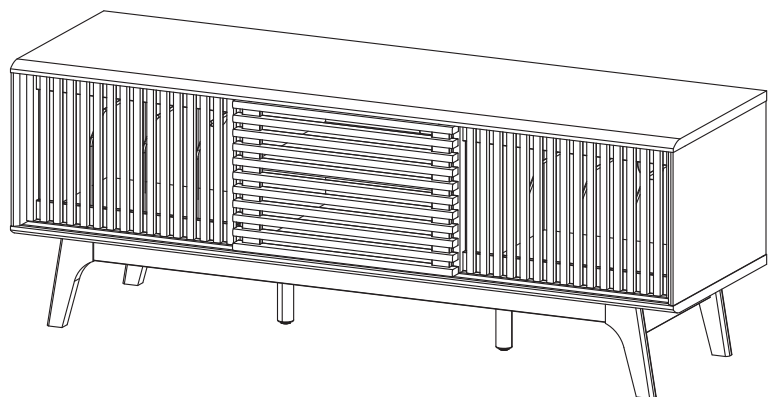
♥ CARING FOR YOUR ITEM

Indoor use only.

Not contract grade.

Clean using a non-abrasive cloth and a mild cleaner.

Never use harsh chemicals, as they could damage the finish or integrity of the item.



CONNECT WITH US!   

Tag us @modway_furniture and #modway for a chance to be featured.