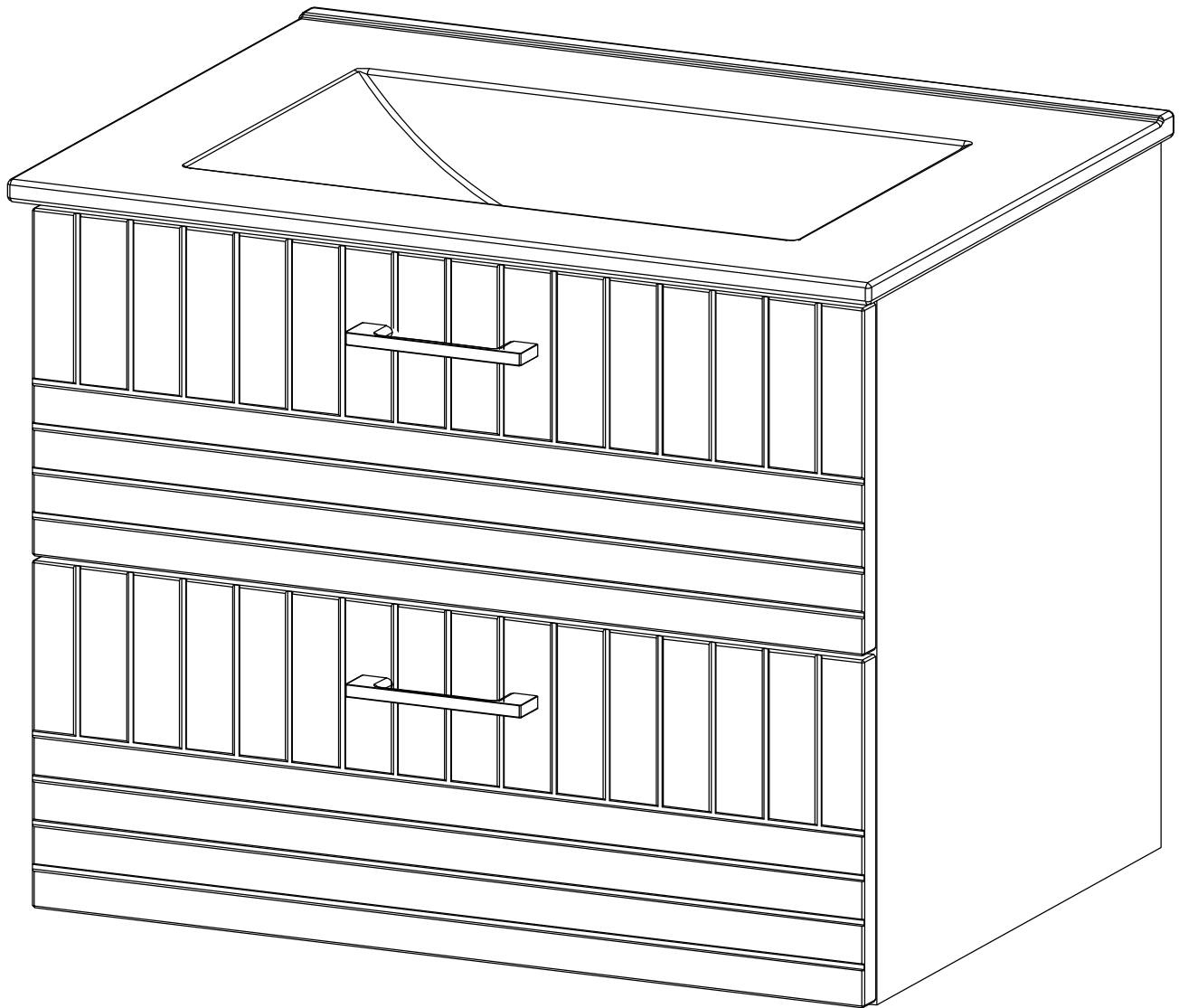


# ASSEMBLY INSTRUCTIONS

# EEI-5107

V0.06.08.21



**Questions? Contact us!**

609.256.9000 • [cs@modway.com](mailto:cs@modway.com)  
[www.modway.com](http://www.modway.com)

**\*modway**

# Let's get started!

\*modway



Read through all of the instructions before starting



Care instructions are listed in the last step of this manual



Approx. 90 minutes assembly time



Make sure you have all parts and components before discarding any packing materials



2 people recommended for assembly

**Only use hand tools to assemble this item.** Do not use power tools. Do not tighten bolts or screws completely until all hardware is lined up and inserted into the holes.

Do not over-tighten screws and bolts to avoid stripping the hardware or cracking the item.

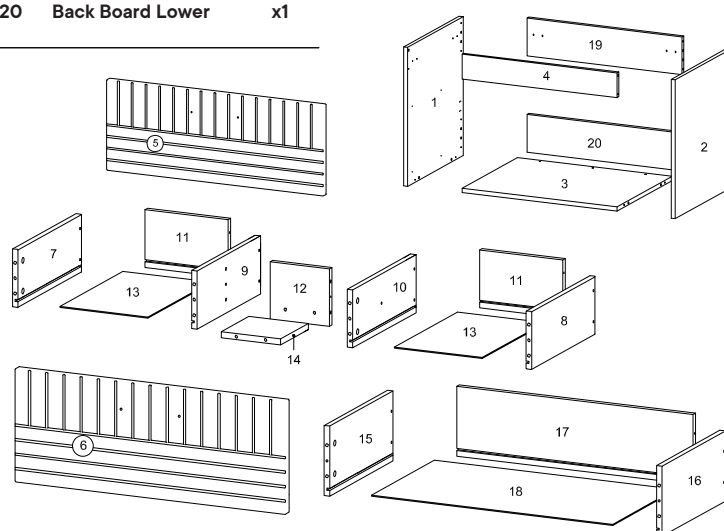
For vanity and plumbing installation, we suggest hiring a professional contractor and plumber.

Assemble your item on a flat, carpeted area, with plenty of space to work. This will prevent damage and scratches to your floors or the item while you're assembling the product.

Keep all components and packaging out of reach of children or animals to avoid risk of choking or suffocation.

## Furniture components:

1	Side Board Left	x1	10	Side Drawer Right B Upper	x1	19	Back Board Upper	x1
2	Side Board Right	x1	11	Back Drawer Small	x2	20	Back Board Lower	x1
3	Bottom Board	x1	12	Support Drawer A Upper	x1			
4	Front Skirt	x1	13	Bottom Drawer Upper	x2			
5	Front Drawer Upper	x1	14	Support Drawer B Upper	x1			
6	Front Drawer Lower	x1	15	Side Drawer Left Lower	x1			
7	Side Drawer Left A Upper	x1	16	Side Drawer Right Lower	x1			
8	Side Drawer Right A Upper	x1	17	Back Drawer Big	x1			
9	Side Drawer Left B Upper	x1	18	Bottom Drawer Lower	x1			



## Provided hardware:

A		Cam Bolt $\varnothing 6 \times 35$ mm	x26	J		Screw M 3.5 x 13 mm	x12	S		Screw M 6 x 15 mm	x4
B		Cam Lock $\varnothing 15$ mm	x14	K		Screw M 8 x 39 mm	x14	T		Screw M 7 x 50 mm	x2
C		Cam Lock $\varnothing 12$ mm	x12	L		Screw M 5.5 X 45 mm	x9	U		Screw M 4 x 25 mm	x4
D		Wood Dowel $\varnothing 8 \times 30$ mm	x15	M		Hanger	x2	V		Handle	x2
E		Wood Dowel $\varnothing 6 \times 30$ mm	x14	N		Short Bracket	x2	W		Screw M 3.5 x 15.5 mm	x8
F		Corner Bracket	x4	O		Foam Pad 25 x 15 x 2 mm	x8	X		Wedge	x8
G		Screw M 4.5 x 12.5 mm	x24	P		Wall Plug	x9	Y		Hat Nut	x4
H		Rail	x2	Q		Long Bracket	x1				
I		Screw M 6 x 10.5 mm	x8	R		Allen Key	x2				

## What you need:

Phillips Head Screwdriver

## You may also need:

- + Power Drill
- + Level
- + Silicone Adhesive or Caulk
- + Drywall Anchors and Screws
- + Other Wall-Mounting Hardware

**Wait!**

**Missing parts or hardware? Need assistance?**

Contact us before returning your item. We're here to help!  
609.256.9000 • cs@modway.com

# Step 1

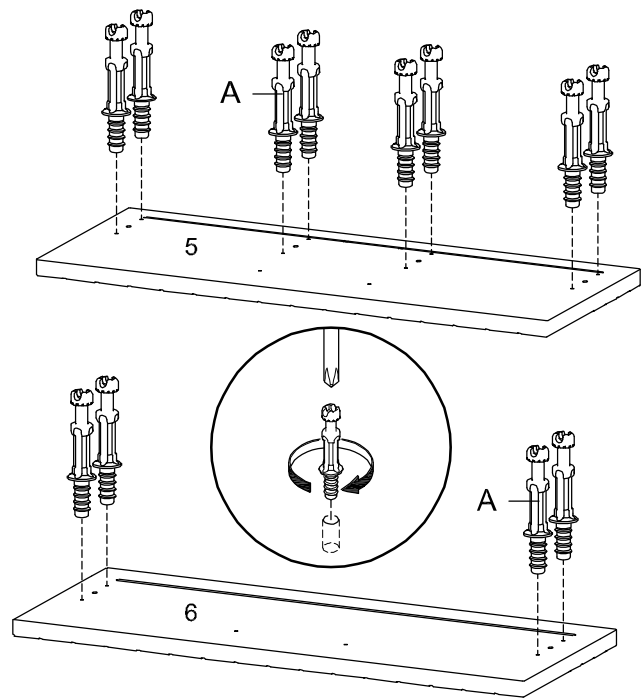
## HARDWARE

**A** Cam Bolt  $\varnothing 6 \times 35$  mm x12

## COMPONENTS

**5** Front Drawer Upper x1

**6** Front Drawer Lower x1



# Step 2

## HARDWARE

**E** Wood Dowel  $\varnothing 6 \times 30$  mm x6

## COMPONENTS

**7** Side Drawer Left A Upper x1

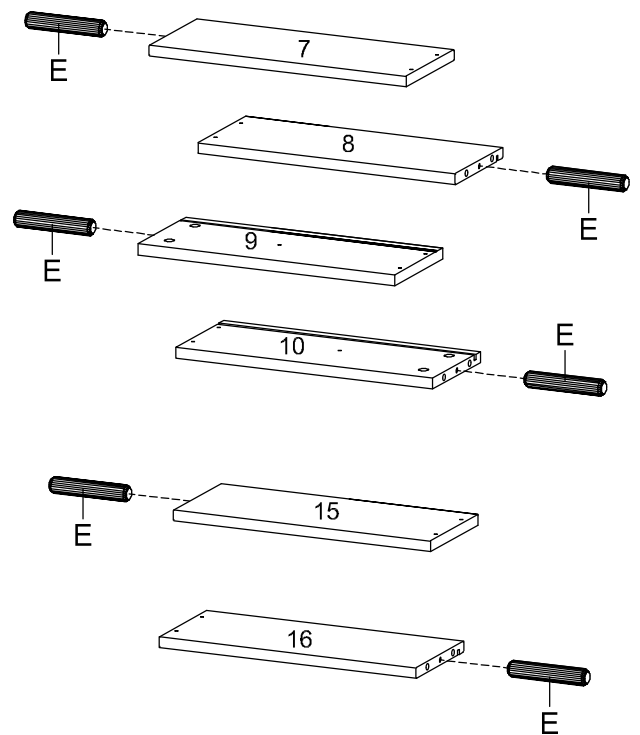
**8** Side Drawer Right A Upper x1

**9** Side Drawer Left B Upper x1

**10** Side Drawer Right B Upper x1

**15** Side Drawer Left Lower x1

**16** Side Drawer Right Lower x1



## Step 3

### HARDWARE

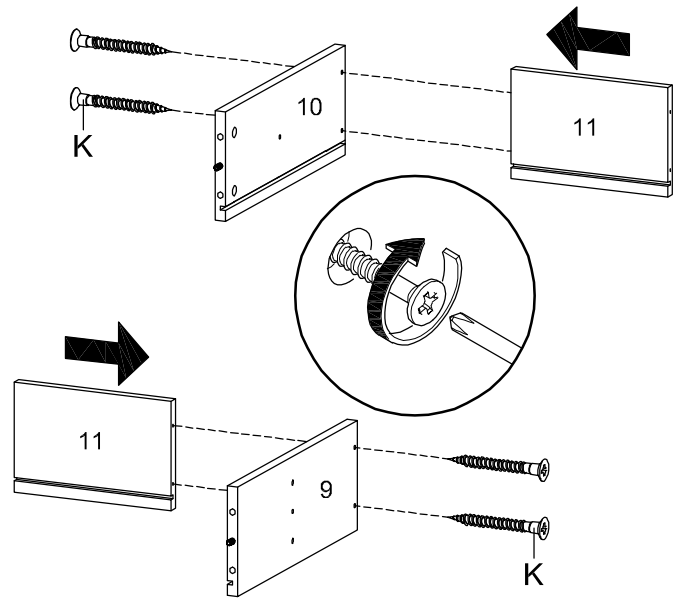
**K** Screw M 8 x 39 mm x4

### COMPONENTS

**9** Side Drawer Left B Upper x1

**10** Side Drawer Right B Upper x1

**11** Back Drawer Small x2



## Step 4

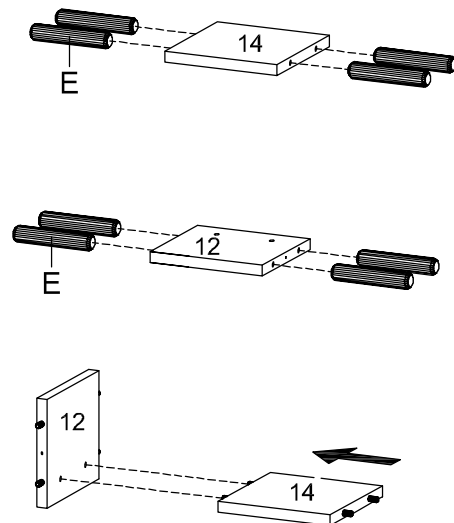
### HARDWARE

**E** Wood Dowel Ø6 x 30 mm x8

### COMPONENTS

**12** Support Drawer A Upper x1

**14** Support Drawer B Upper x1



## Step 5

### HARDWARE

**K** Screw M 8 x 39 mm x2

### COMPONENTS

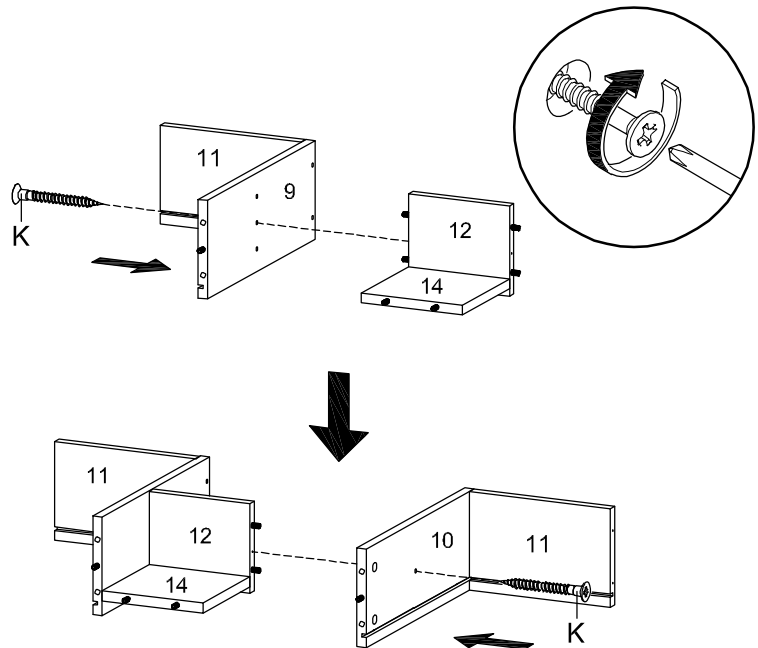
**9** Side Drawer Left B Upper x1

**10** Side Drawer Right B Upper x1

**11** Back Drawer Small x2

**12** Support Drawer A Upper x1

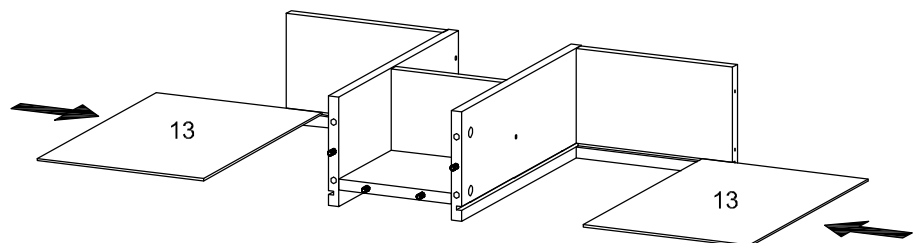
**14** Support Drawer B Upper x1



## Step 6

### COMPONENT

**13** Bottom Drawer Upper x2



# Step 7

## HARDWARE

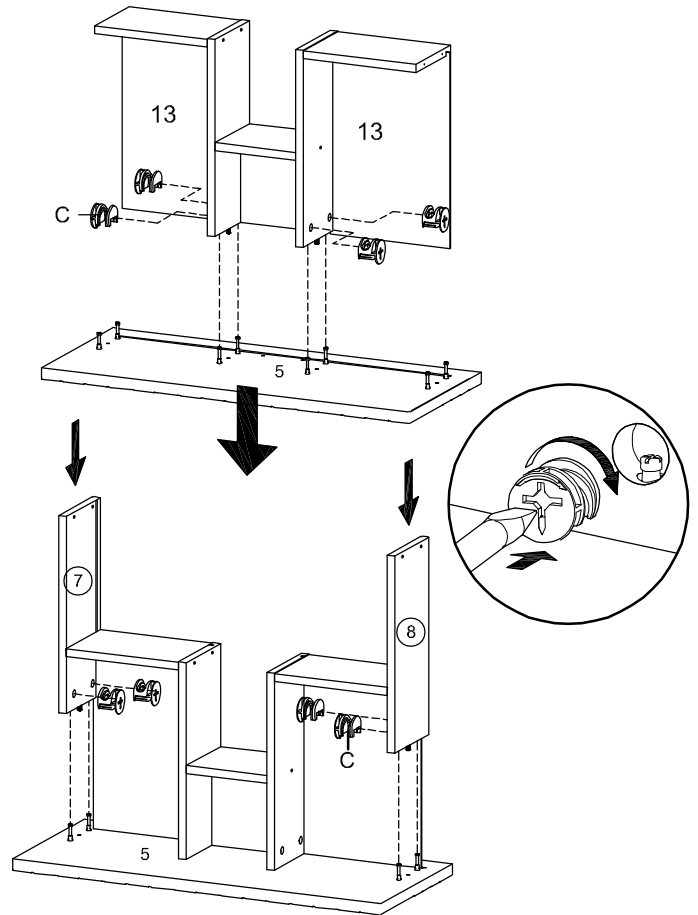
**C** Cam Lock Ø12 mm x8

## COMPONENTS

**5** Front Drawer Upper x1

**7** Side Drawer Left A Upper x1

**8** Side Drawer Right A Upper x1



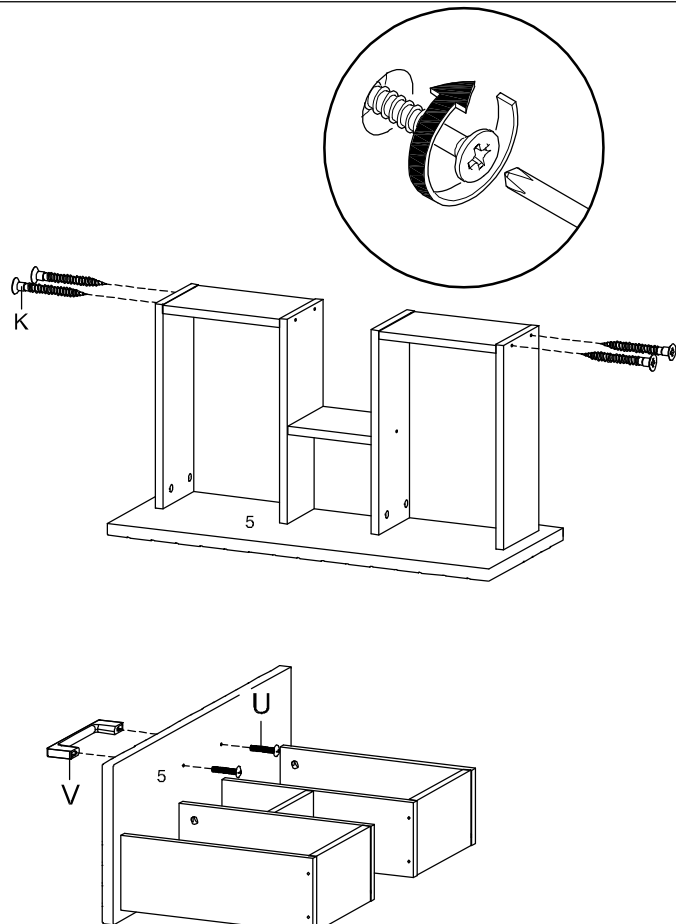
# Step 8

## HARDWARE

**K** Screw M 8 x 39 mm x4

**V** Handle x1

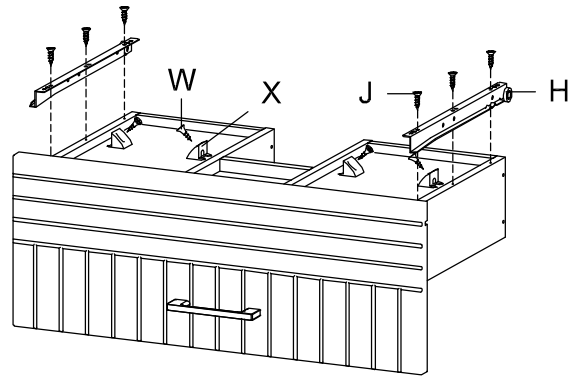
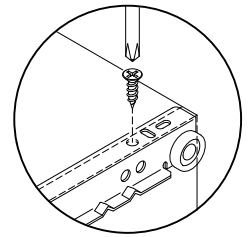
**U** Screw M 4 x 25 mm x2



# Step 9

## HARDWARE

<b>H</b>	Rail	x1
<b>J</b>	Screw M 3.5 x 13 mm	x6
<b>W</b>	Screw M 3.5 x 15.5 mm	x4
<b>X</b>	Wedge	x4



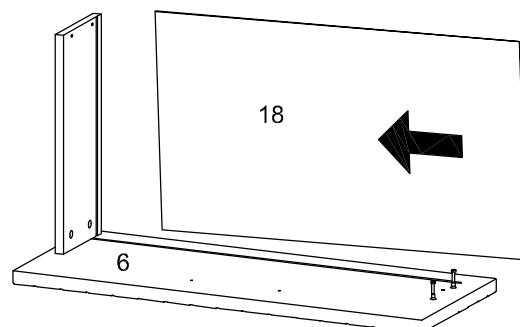
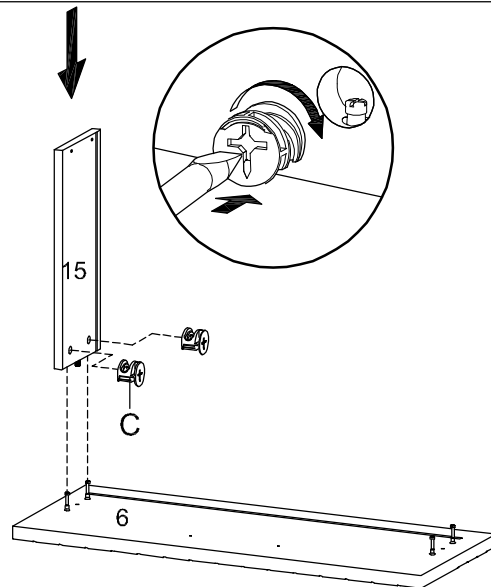
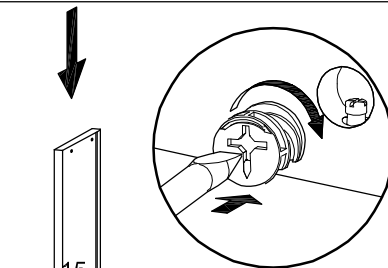
# Step 10

## HARDWARE

<b>C</b>	Cam Lock Ø12 mm	x2
----------	-----------------	----

## COMPONENTS

<b>6</b>	Front Drawer Lower	x1
<b>15</b>	Side Drawer Left Lower	x1
<b>18</b>	Bottom Drawer Lower	x1



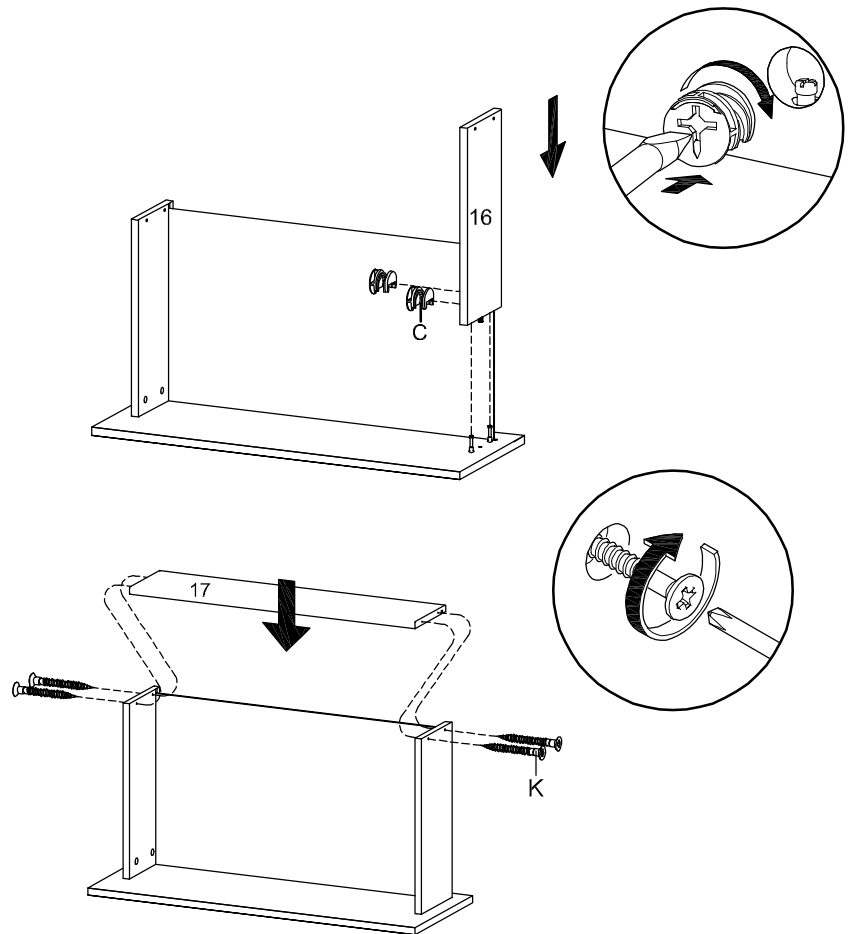
# Step 11

## HARDWARE

- C** Cam Lock Ø12 mm x2
- K** Screw M 8 x 39 mm x4

## COMPONENTS

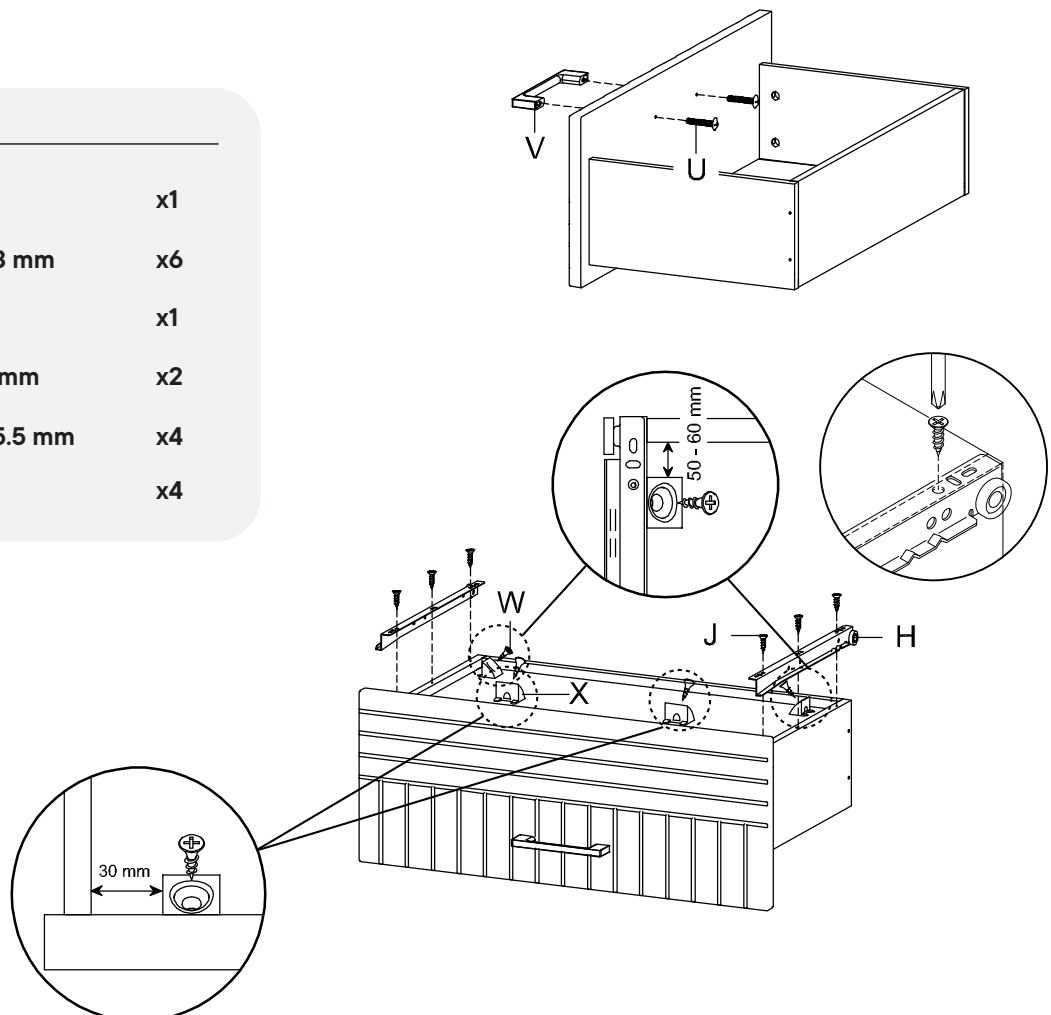
- 16** Side Drawer Right Lower x1
- 17** Back Drawer Big x1



# Step 12

## HARDWARE

- H** Rail x1
- J** Screw M 3.5 x 13 mm x6
- V** Handle x1
- U** Screw M 4 x 25 mm x2
- W** Screw M 3.5 x 15.5 mm x4
- X** Wedge x4





## Step 13

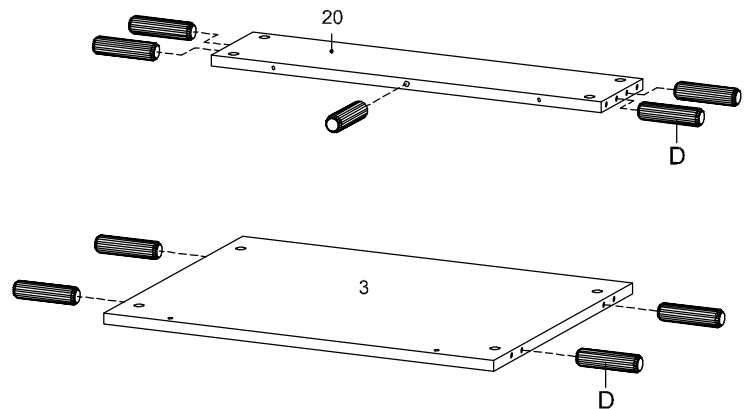
### HARDWARE

**D** Wood Dowel Ø8 x 30 mm x9

### COMPONENTS

**3** Bottom Board x1

**20** Back Board Lower x1



## Step 14

### HARDWARE

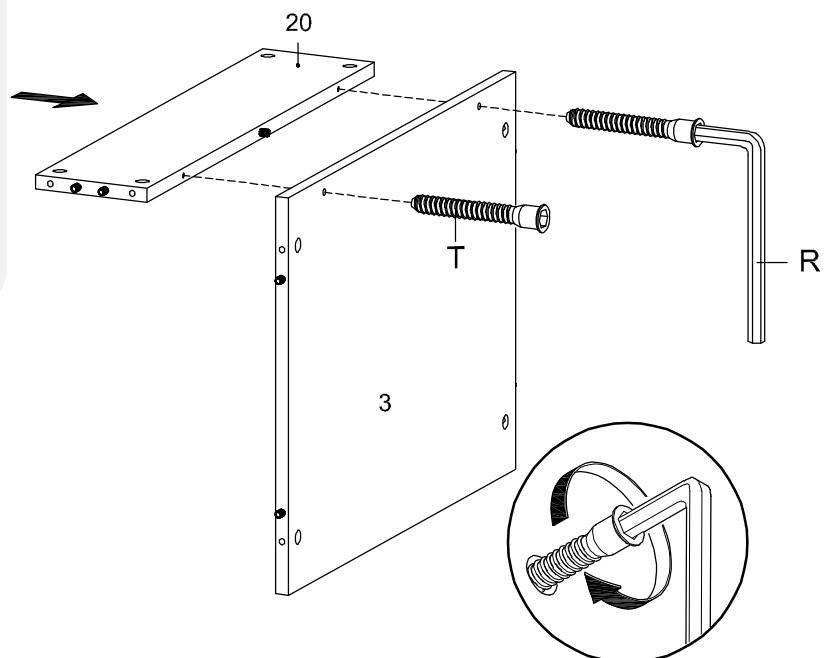
**T** Screw M 7 x 50 mm x2

**R** Allen Key x1

### COMPONENTS

**3** Bottom Board x1

**20** Back Board Lower x1



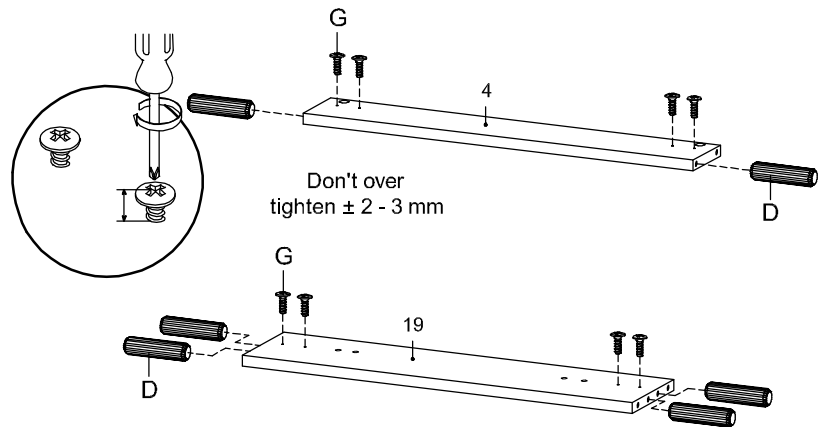
# Step 15

## HARDWARE

- D** Wood Dowel Ø8 x 30 mm x6
- G** Screw M 4.5 x 12.5 mm x8

## COMPONENTS

- 4** Front Skirt
- 19** Back Board Upper



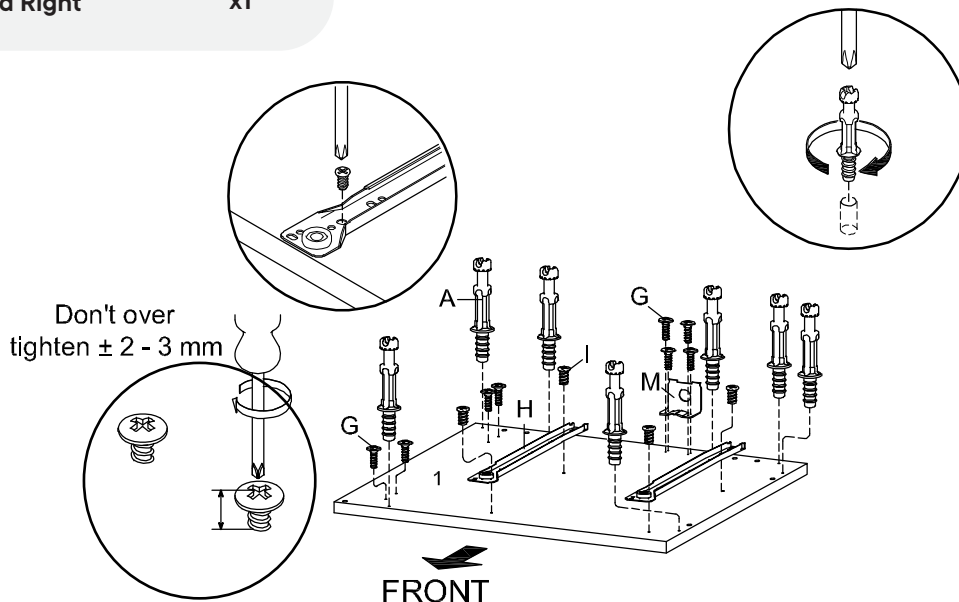
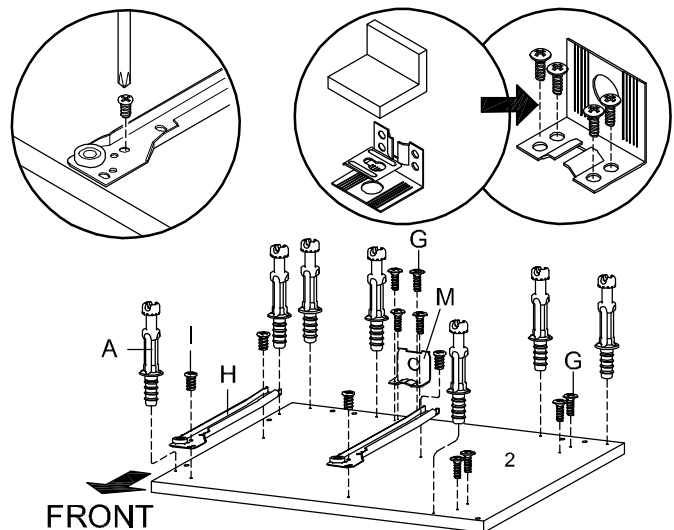
# Step 16

## HARDWARE

- A** Cam Bolt Ø6 x 35 mm x14
- G** Screw M 4.5 x 12.5 mm x16
- H** Rail x2
- I** Screw M 6 x 10.5 mm x8
- M** Hanger x2

## COMPONENTS

- 1** Side Board Left
- 2** Side Board Right



## Step 17

### HARDWARE

**B** Cam Lock Ø15 mm x7

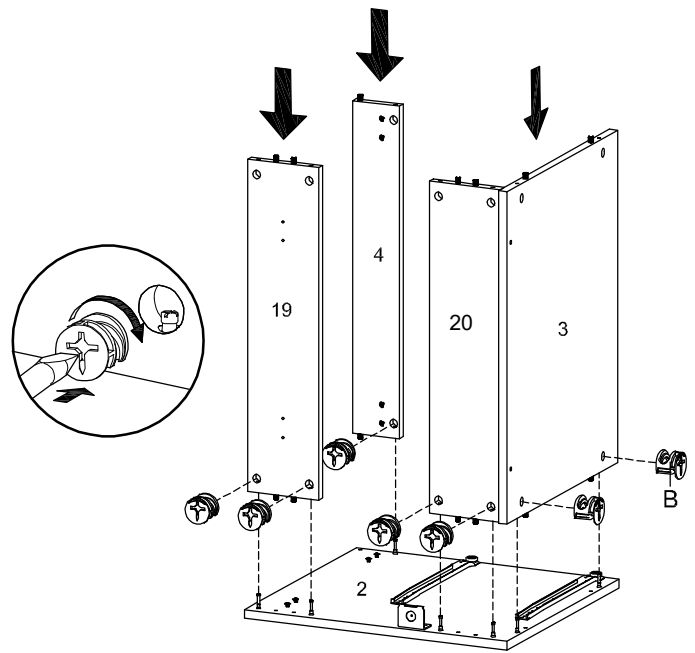
### COMPONENTS

**3** Bottom Board x1

**4** Front Skirt x1

**19** Back Board Upper x1

**20** Back Board Lower x1



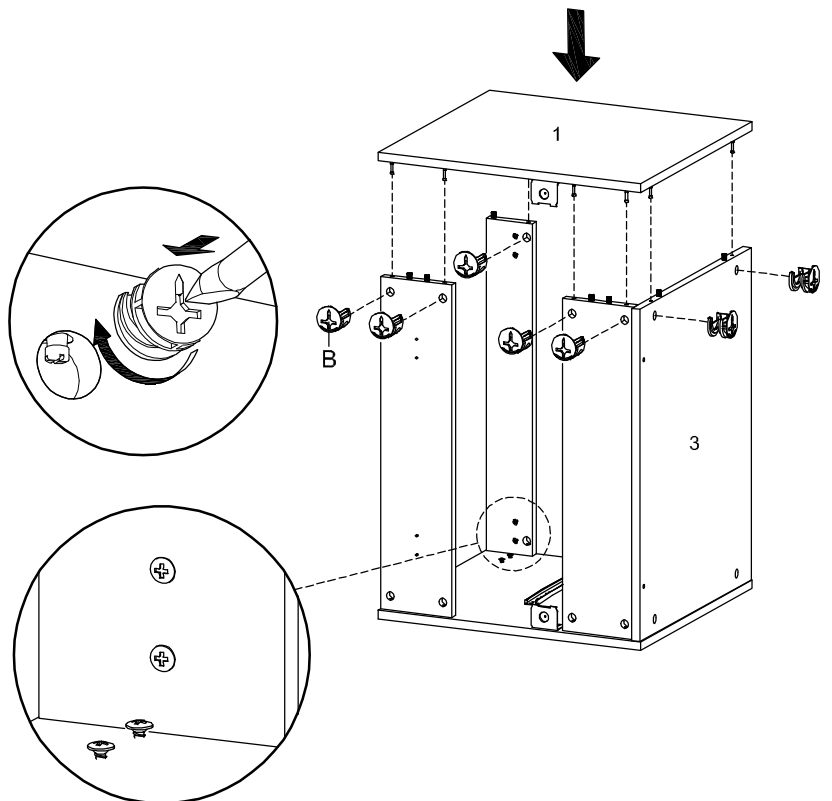
## Step 18

### HARDWARE

**B** Cam Lock Ø15 mm x7

### COMPONENT

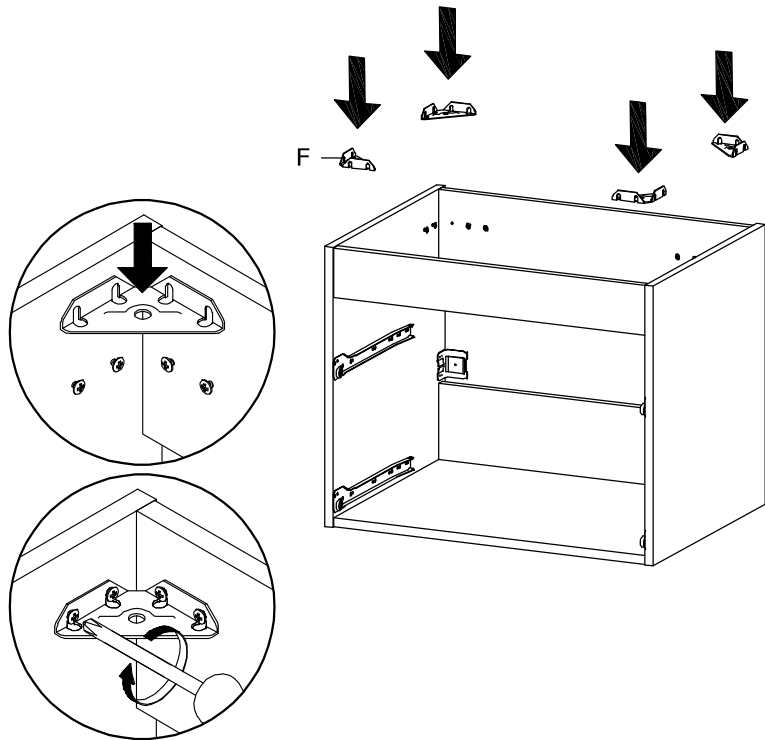
**1** Side Board Left x1



# Step 19

## HARDWARE

- F** Corner Bracket x4

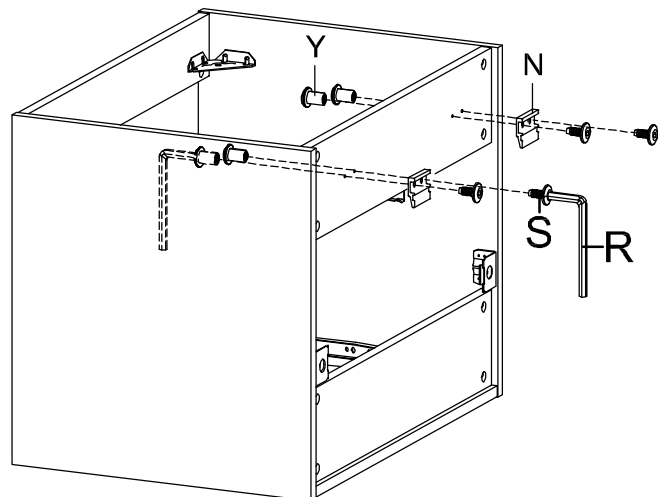
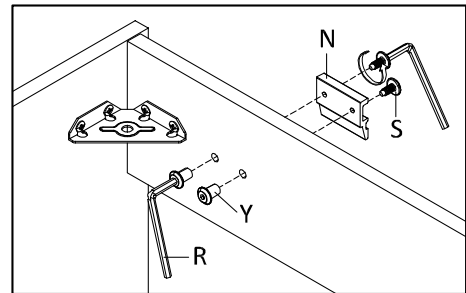


NOTE  
Tighten all the screw

# Step 20

## HARDWARE

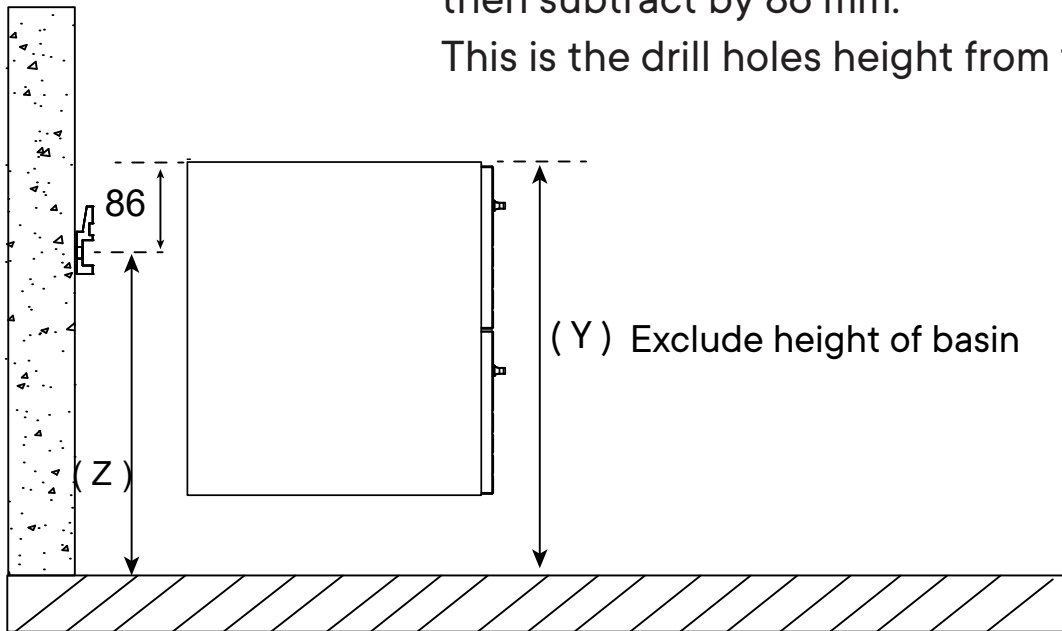
- N** Short Bracket x2
- R** Allen Key x2
- S** Screw M 6 x 15 mm x4
- Y** Hat Nut x4



## Step 21

Determine your desired height (Y),  
then subtract by 86 mm.

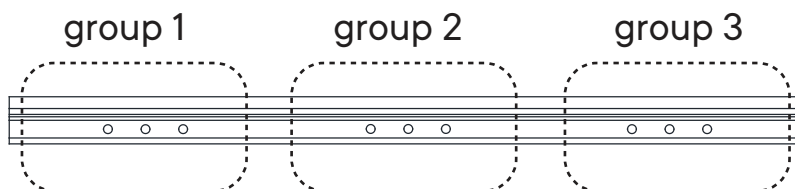
This is the drill holes height from the floor (Z).



## Step 22

Please use minimum 2 holes on group 1 and group 3,  
and minimum 1 hole on group 2, to apply the wall plug and screw. Use additional holes  
when necessary.

\* Long Bracket



Different wall materials require unique wall fasteners.

The wall plugs (P) and screws (L) are designed for fixing to concrete walls only.

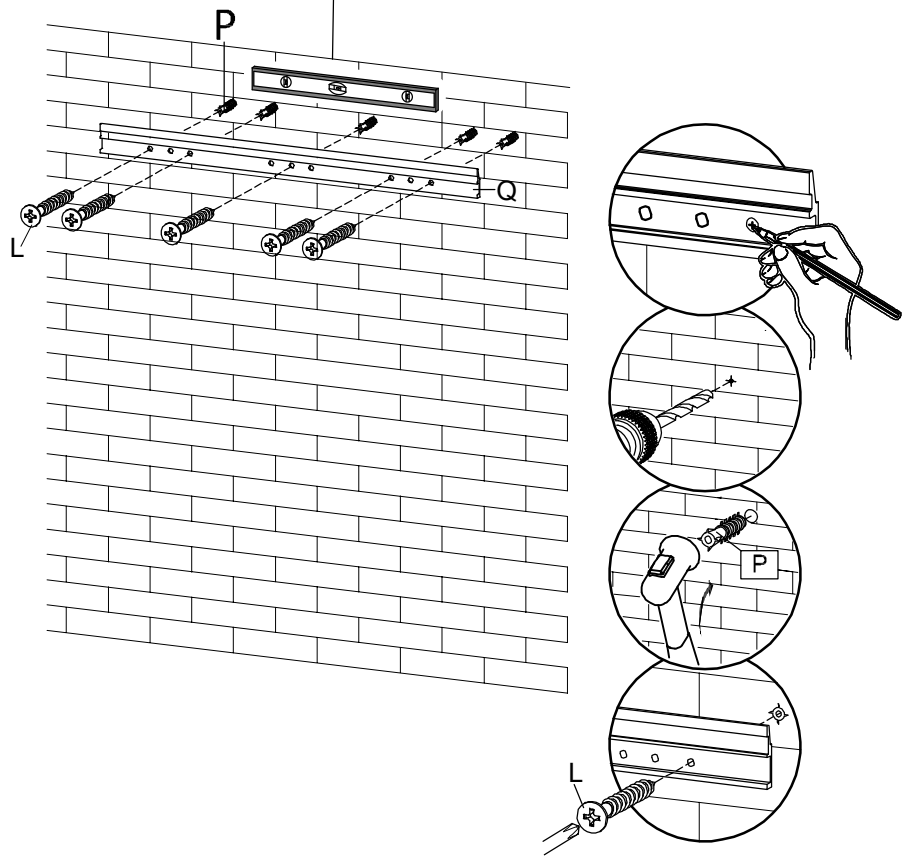
Please consult your local hardware store to ensure you are using the correct  
hardware for your wall type.

# Step 23

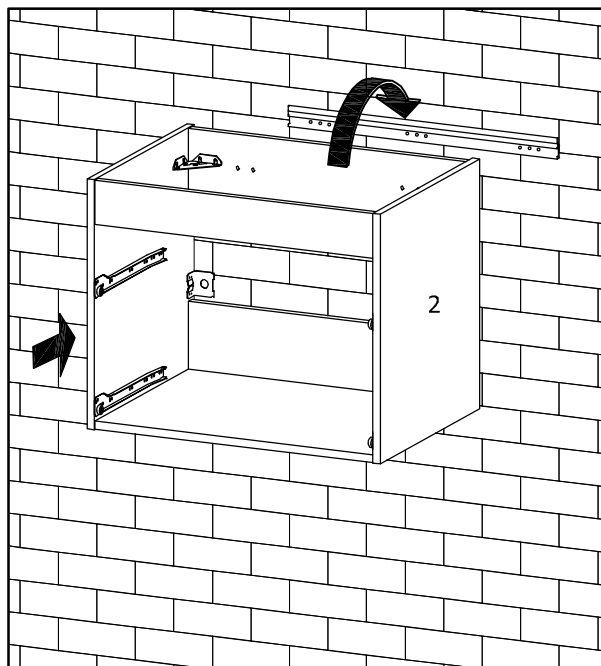
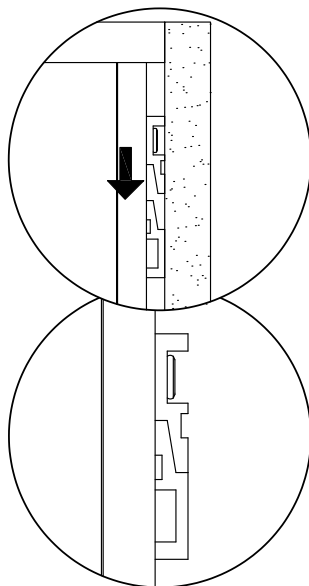
## HARDWARE

- L** Screw M 5.5 x 45 mm x5
- P** Wall Plug x5
- Q** Long Bracket x1

Use Waterpass to ensure the drill position



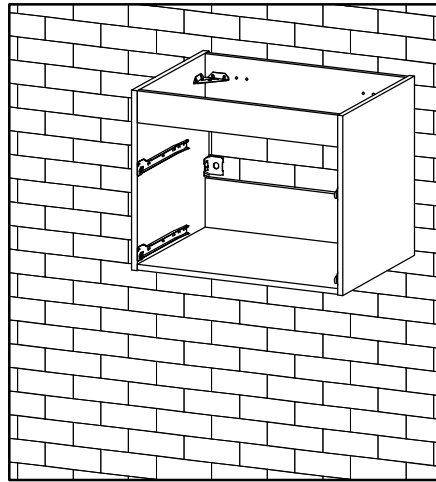
# Step 24



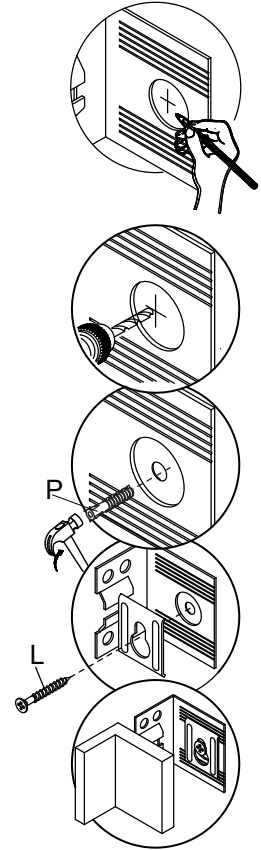
# Step 25

## HARDWARE

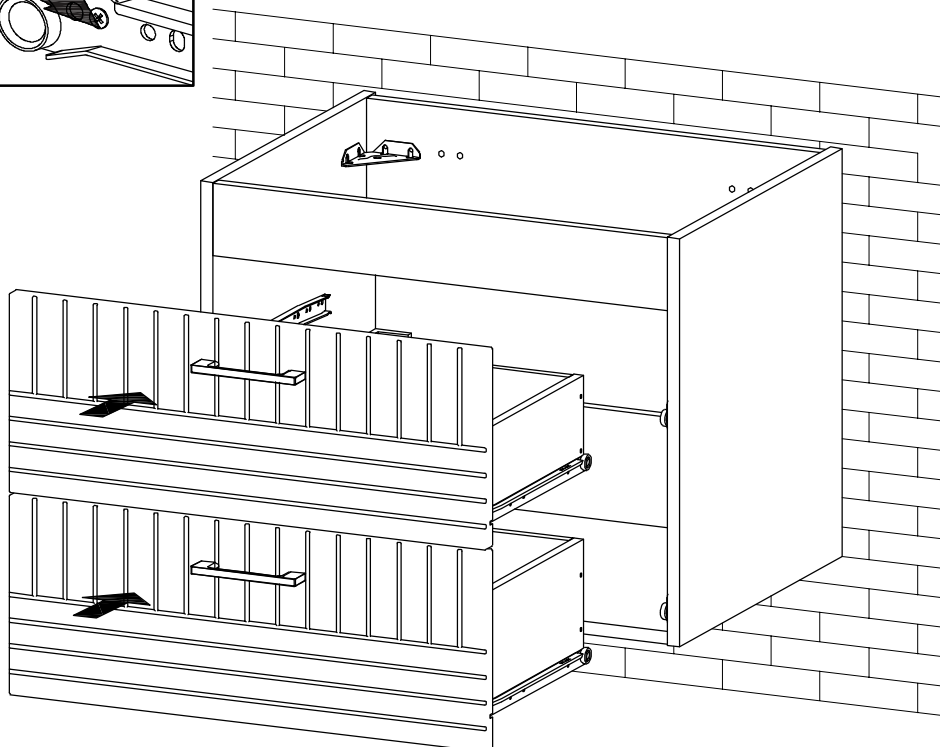
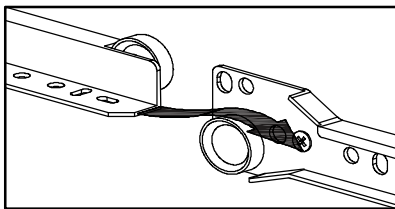
- L** Screw M 5.5 x 45 mm x2
- P** Wall Plug x2



GUIDE FOR DRILLING



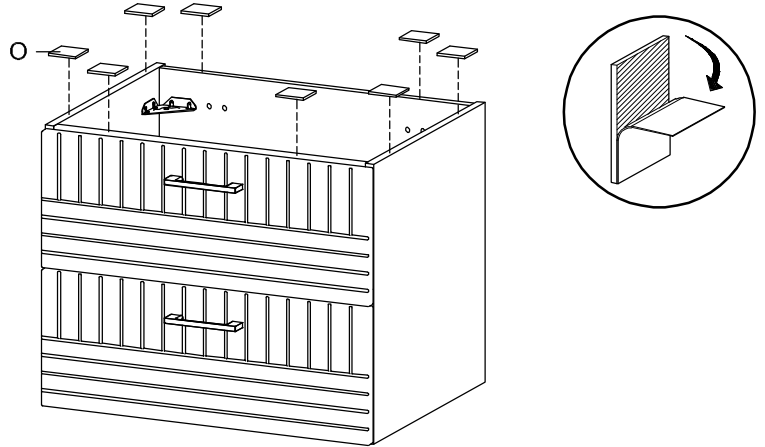
# Step 26



## Step 27

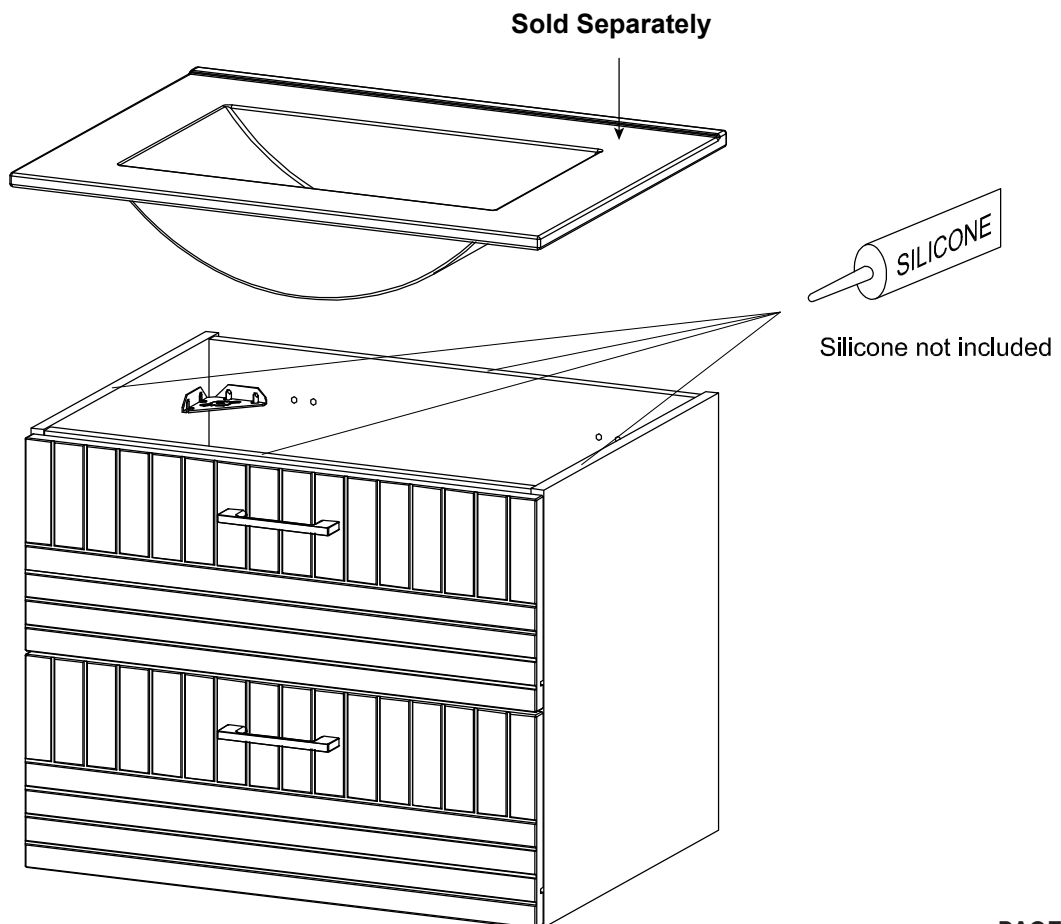
### HARDWARE

- Foam Pad 25 x 15 x 2 mm x8



## Step 28

Apply a thin bead of silicone compound around the vanity base and set the vanity top carefully in place. Remove any excess silicone compound with a wet rag. Temporarily remove/dismantle all Drawers during Basin/Sink /Plumbing work installation work to prevent water damage.

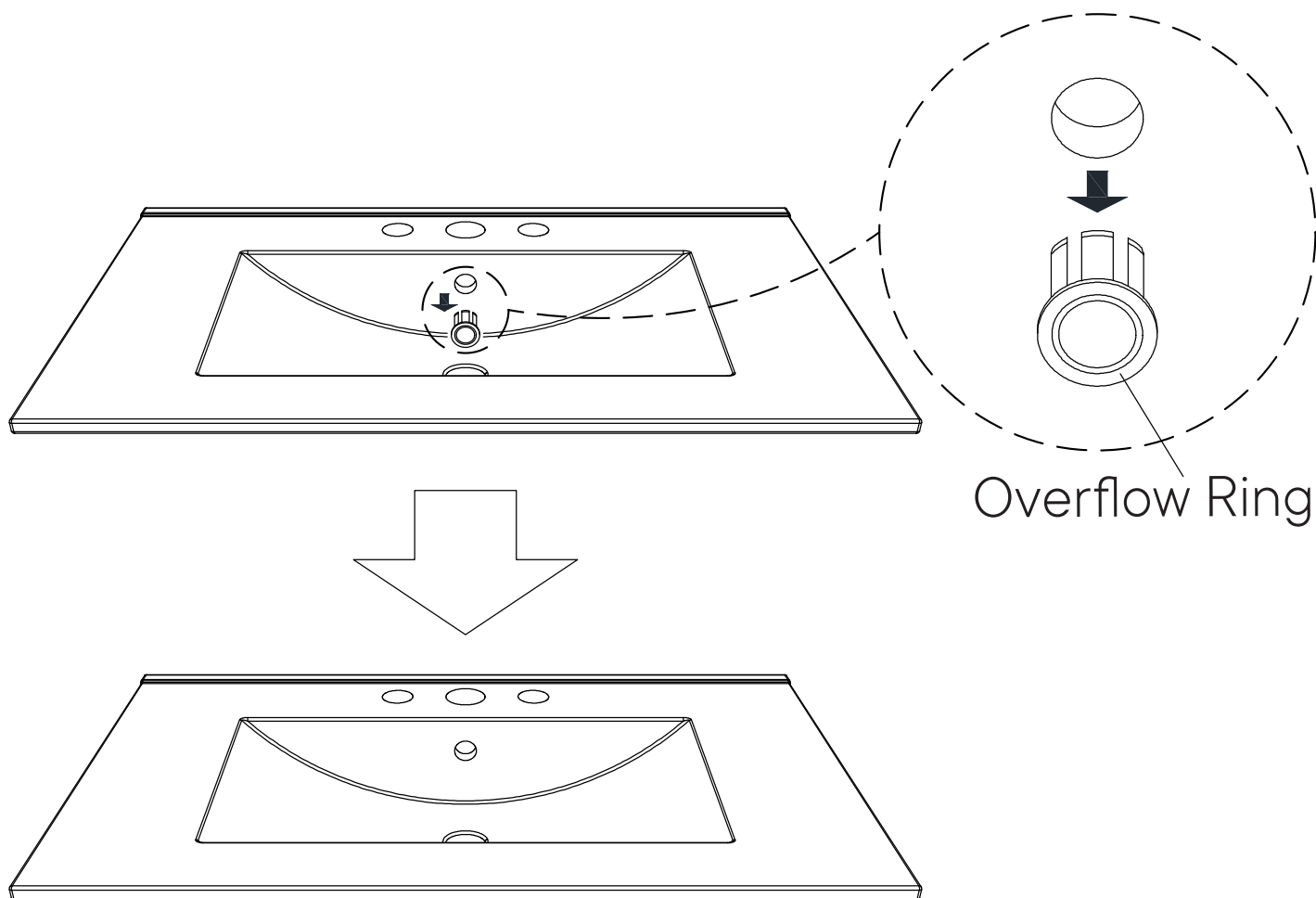




# A quick note...

\*modway

Your sink basin comes complete with a silver overflow ring.  
If you'd like to remove this overflow ring, you can do so by hand.



**Wait!**

**Missing parts or hardware? Need assistance?**

Contact us before returning your item. We're here to help!

609.256.9000 • [cs@modway.com](mailto:cs@modway.com)

# Great job!

Cabinet assembly is complete.

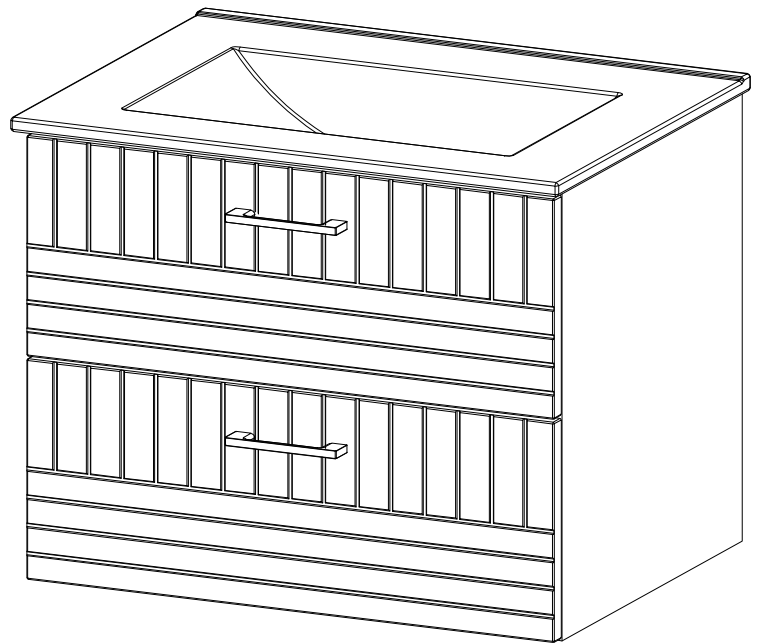
## ♥ CARING FOR YOUR ITEM

Indoor use only.

Not contract grade.

Clean using a non-abrasive cloth and a mild cleaner.

Never use harsh chemicals, as they could damage the finish or integrity of the item.



CONNECT WITH US!   

Tag us @modway\_furniture and #modway for a chance to be featured.