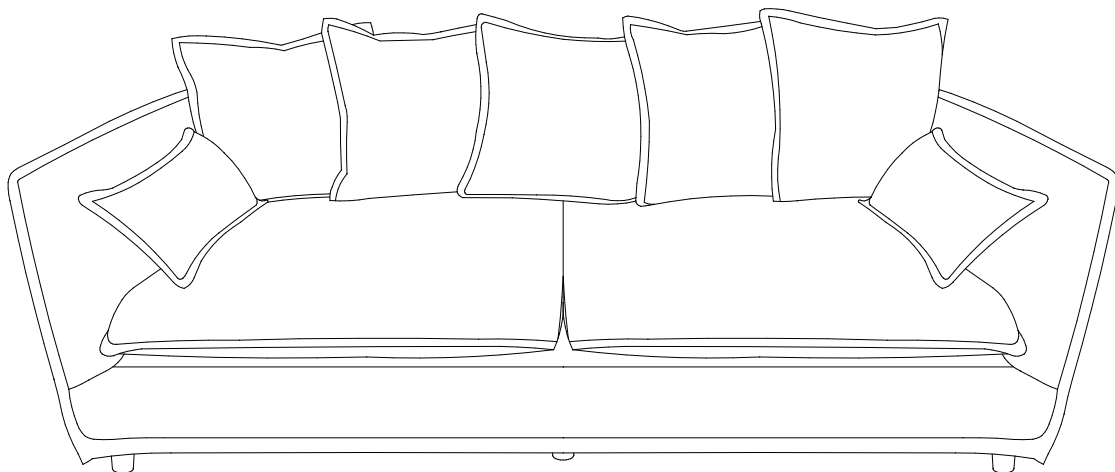


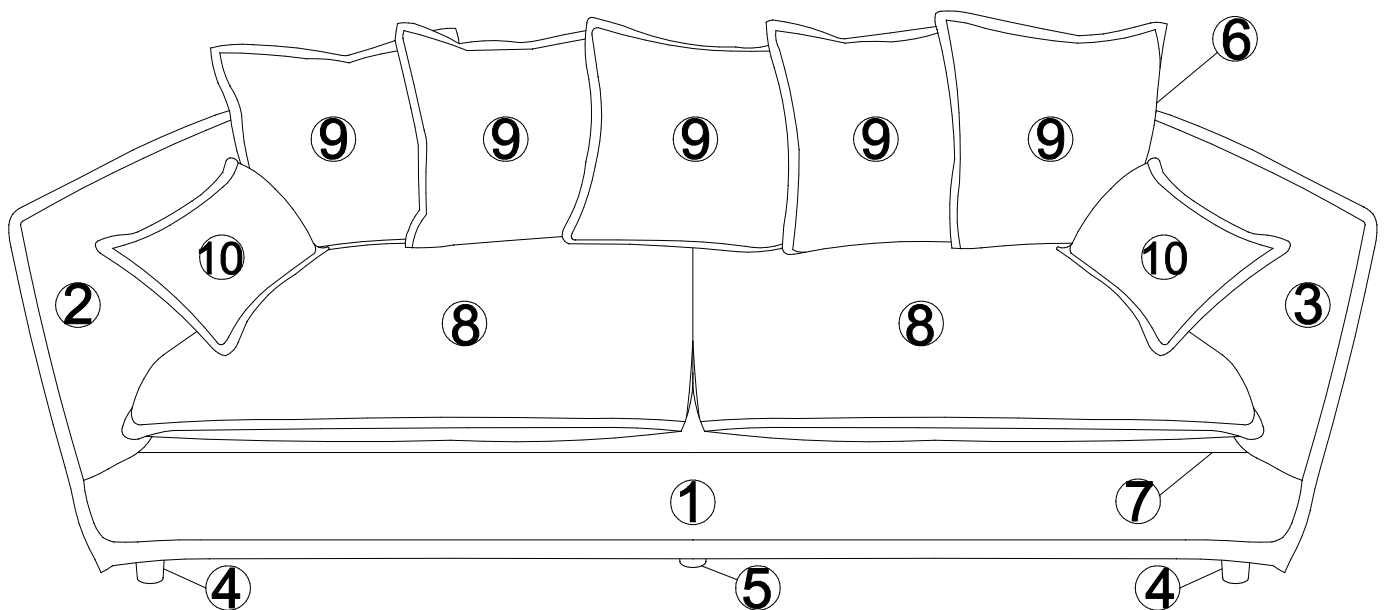
Thank you for purchasing the **MODWAY SOFA**

Before you start, here are some helpful advice:

1. We suggest you spend a short time reading through this leaflet and then follow the simple step-by-step instructions.
2. Owing to the size and weight of the sofa, we recommend that it is assembled by two adults, on a carpeted or padded area, in the room that it is intended for. Approximate assembly time: 30 minutes.
3. Please do not use any tools other than those provided or recommended in these instructions.
4. Please do not throw away any of the packaging or the instruction until you have checked all the components and hardware and the furniture is fully assembled. Please ensure that the packaging is disposed of in a safe and environmentally friendly way.
5. Assemble all components loosely until advised to tighten. Depending on use, it may be necessary to tighten the components from time to time, so please save the tools that have been provided.
6. Please keep all pieces out of reach of children.



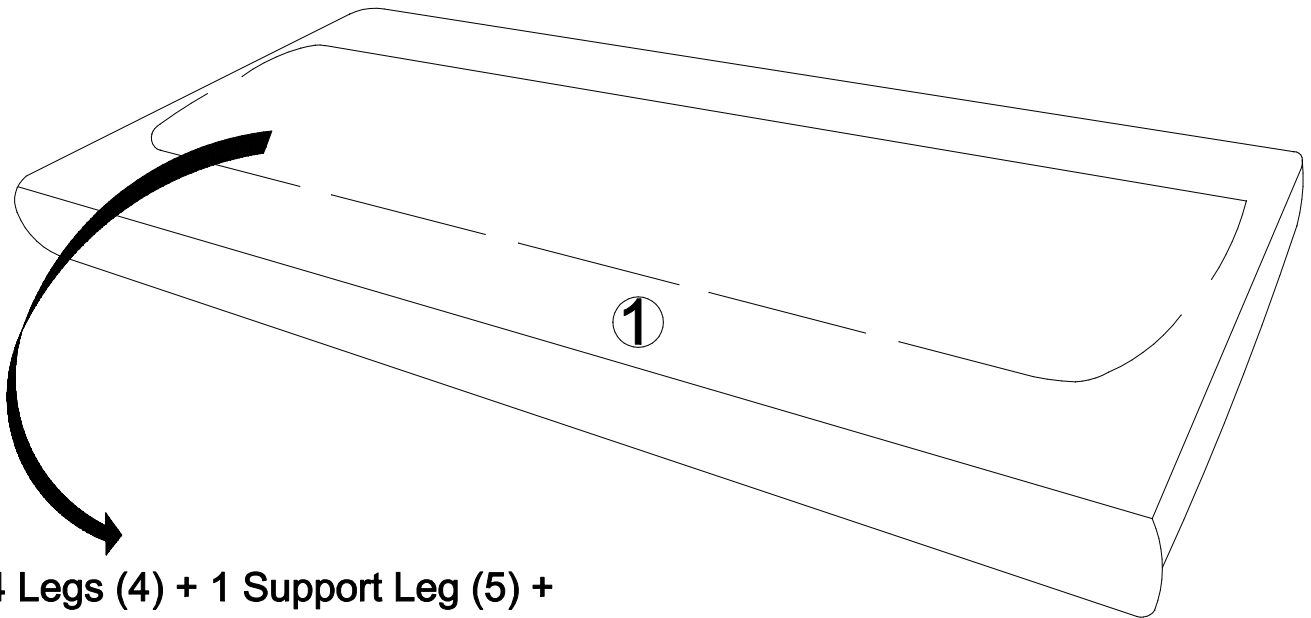
Components:



1. Sofa Seat	x1	2. Left Armrest	x1	3. Right Armrest	x1
4. Leg	x4	5. Support Leg	x1	6. Sofa Back	x1
7. Seat Cover		8. Seat Cushion	x2	9. Back Pillow	x5
		10. Side Pillow	x2		

STEP 1:

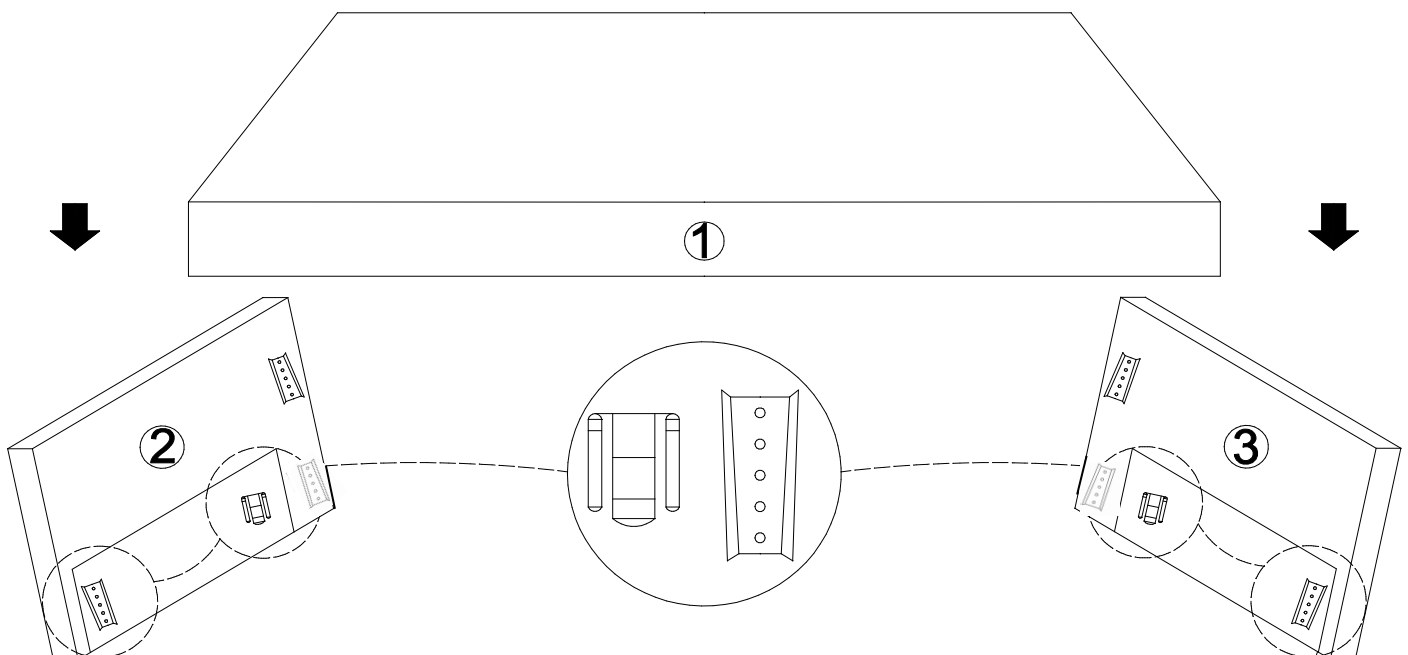
1. Please put **Sofa Seat (1)** upside down on a carpeted or padded surface.
2. Open the Zipper strip at the bottom of the **Sofa Seat (1)** as shown and take out the 4 pieces **Legs (4)**, 1 piece of **Support Leg (5)**, 5 pieces of **Back Pillows (9)**, 2 pieces of **Side Pillows (10)** and Hardware bag.



**4 Legs (4) + 1 Support Leg (5) +
5 Back Pillows (9) + 2 Side Pillows (10) + Hardware Package**

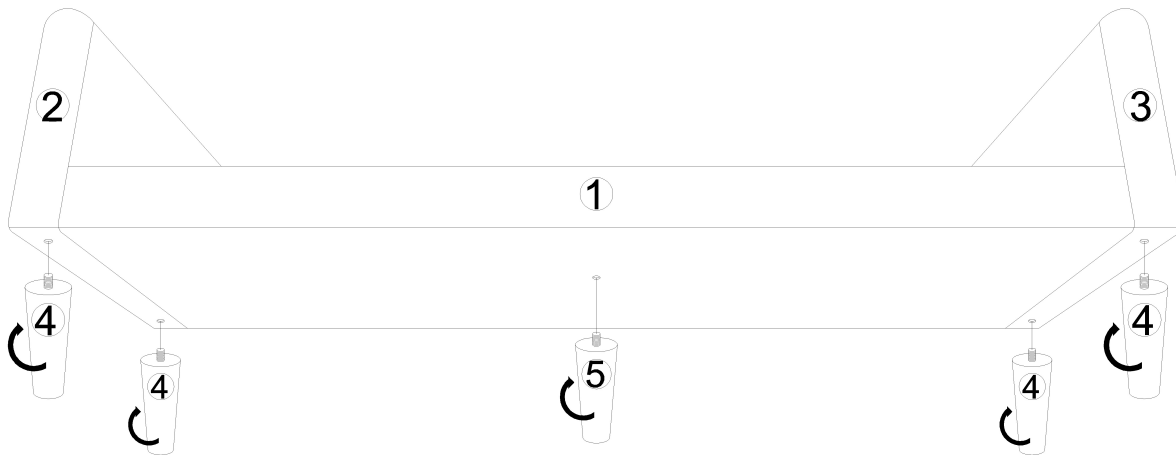
STEP 2:

1. Please carefully turn over **Sofa Seat (1)**.
2. Insert **Left Armrest (2)** and **Right Armrest (3)** to **Sofa Seat (1)** by using the pre-installed Clips on **Sofa Seat (1)**, **Left Armrest (2)** and **Right Armrest (3)** to lock each other as shown.



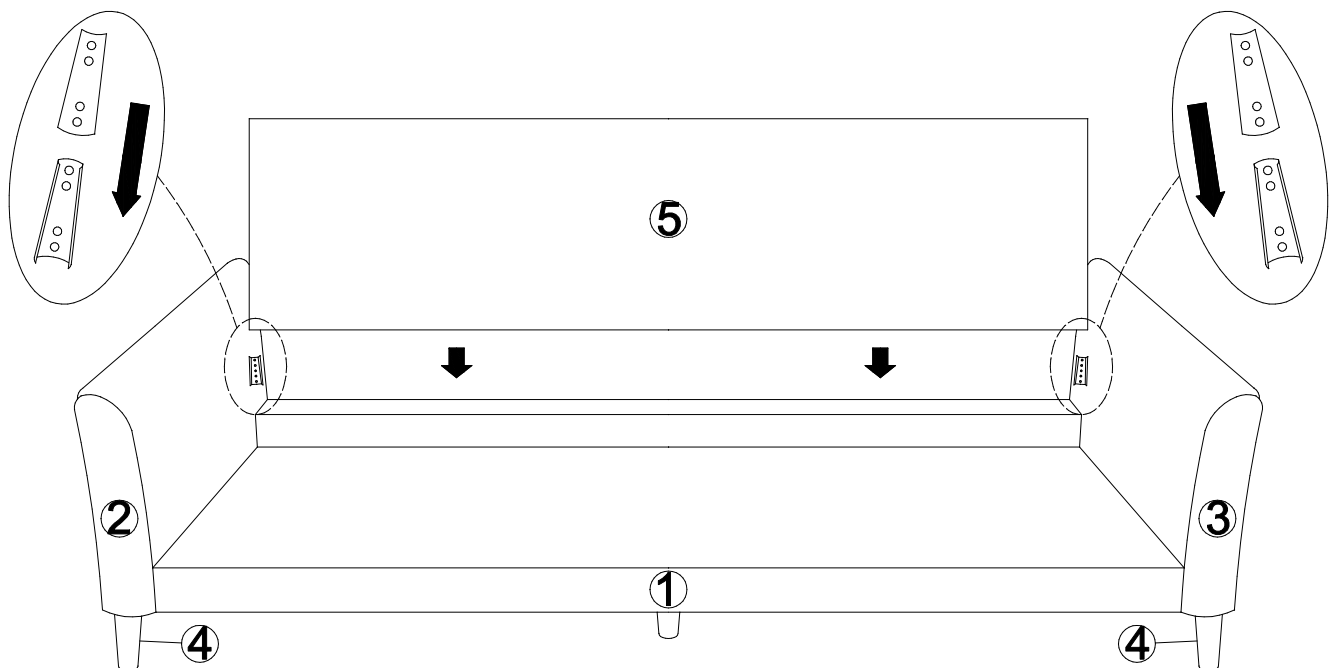
STEP 3:

1. Put the assembled **Sofa Seat (1)**, **Left Armrest (2)**, and **Right Armrest (3)** on a carpeted or padded surface.
2. Tighten 4 pieces of **Legs (4)** to **Left Armrest (2)** and **Right Armrest (3)** clockwise as shown by hand.
3. Tighten 1 piece of **Support Leg (5)** to the center of **Sofa Seat (1)** clockwise as shown by hand.



STEP 4:

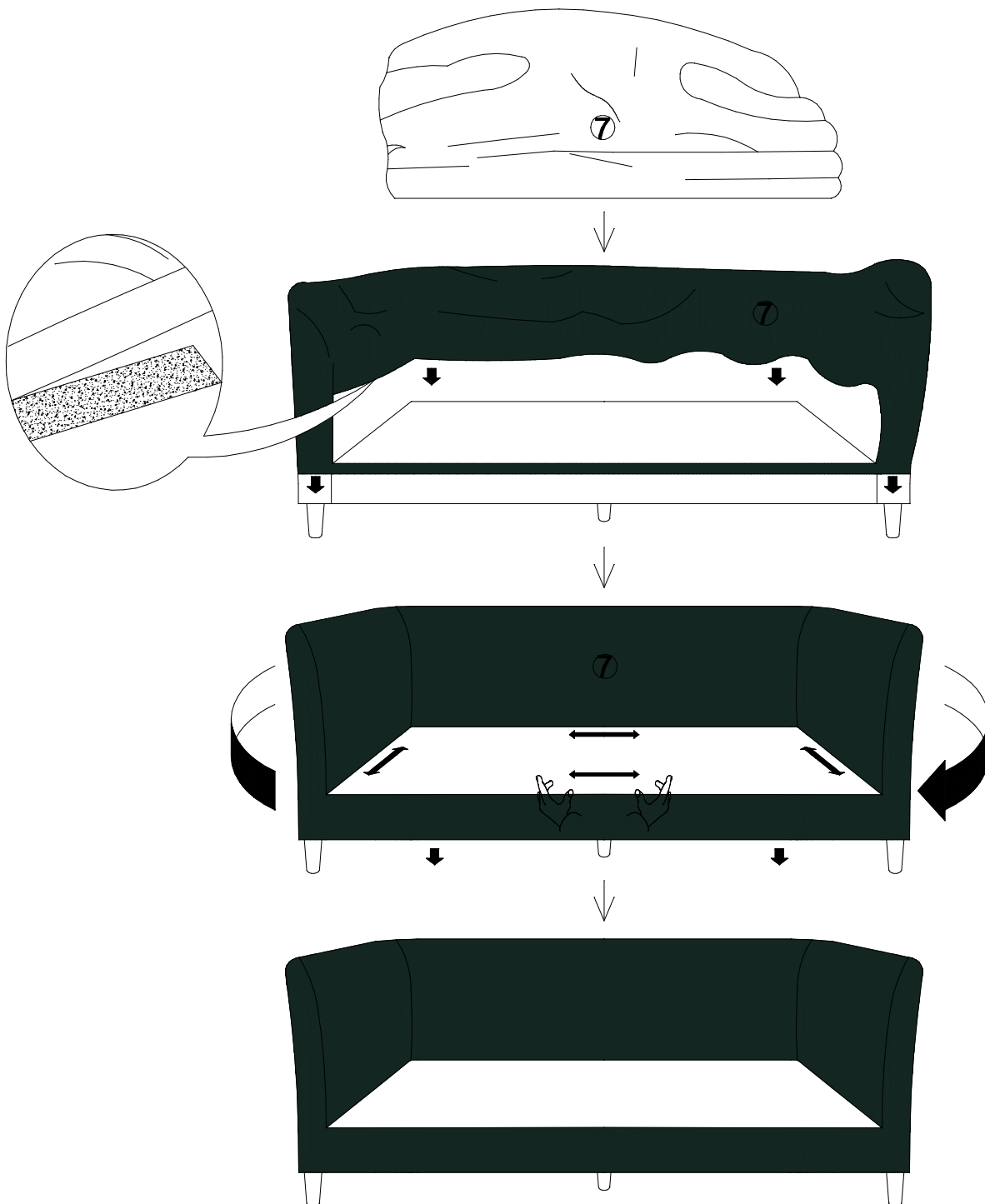
1. Please carefully turn over the assembled **Sofa Seat (1)**, **Left Armrest (2)** and **Right Armrest (3)**.
2. Insert **Sofa Back (5)** to **Left Armrest (2)** and **Right Armrest (3)** by using the pre-installed Clips on **Left Armrest (2)**, **Right Armrest (3)** and **Sofa Back (5)** to lock each other as shown.



STEP 5

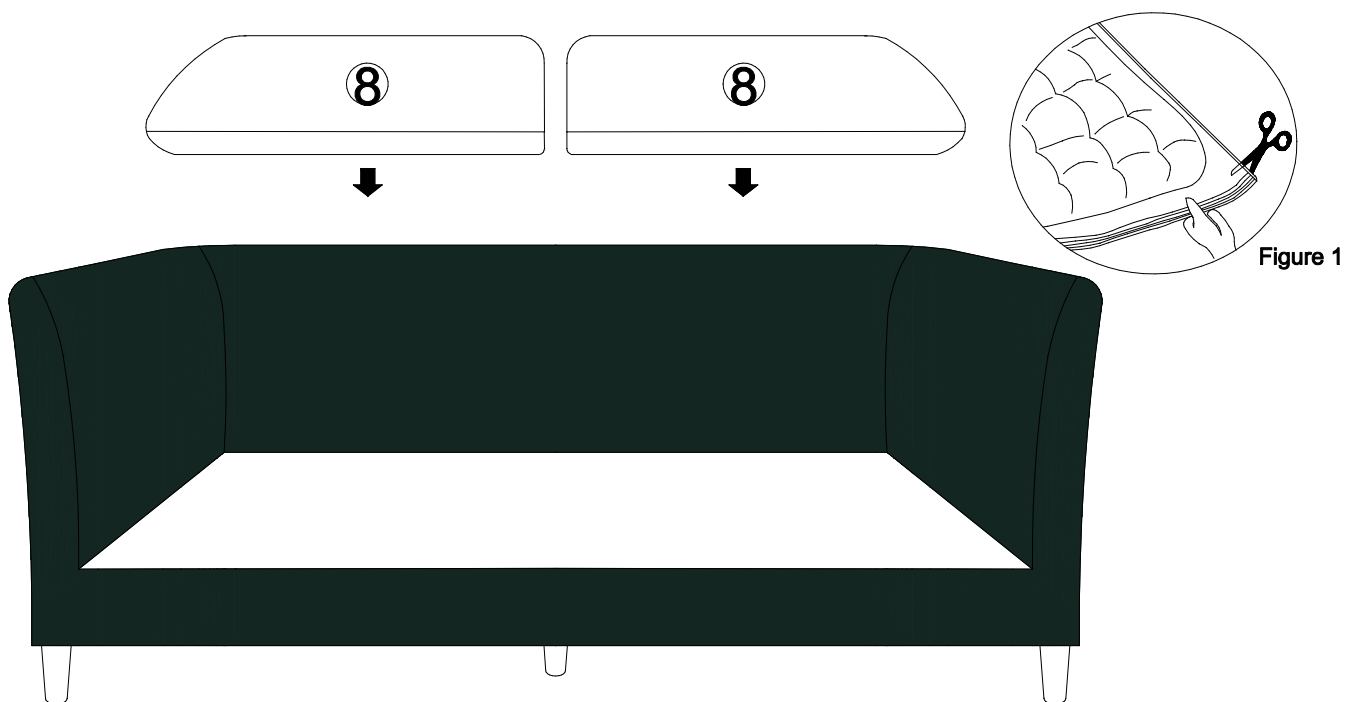
1. Put **Seat Cover (7)** cover over the assembled **Sofa Seat (1)**, **Left Armrest (2)**, **Right Armrest (3)** and **Sofa Back (6)** as shown.
2. Pull **Seat Cover (7)** in line with the assembled **Sofa Seat (1)**, **Left Armrest (2)**, **Right Armrest (3)** and **Sofa Back (6)** by hand as shown, then fix the **Seat Cover (7)** by vercro as shown.

Special:The **Fabric Cover (1)** is made by fabric, there will be some wrinkles after folding and packing in the carton,It can be ironed to be better. There will be no much wrinkle on the surface of **Fabric Cover (1)** after ironing. **(Noted: Even no ironing, these wrinkles on the fabric cover will be much better automatically after aperiod of time due to gravity of usage.)**



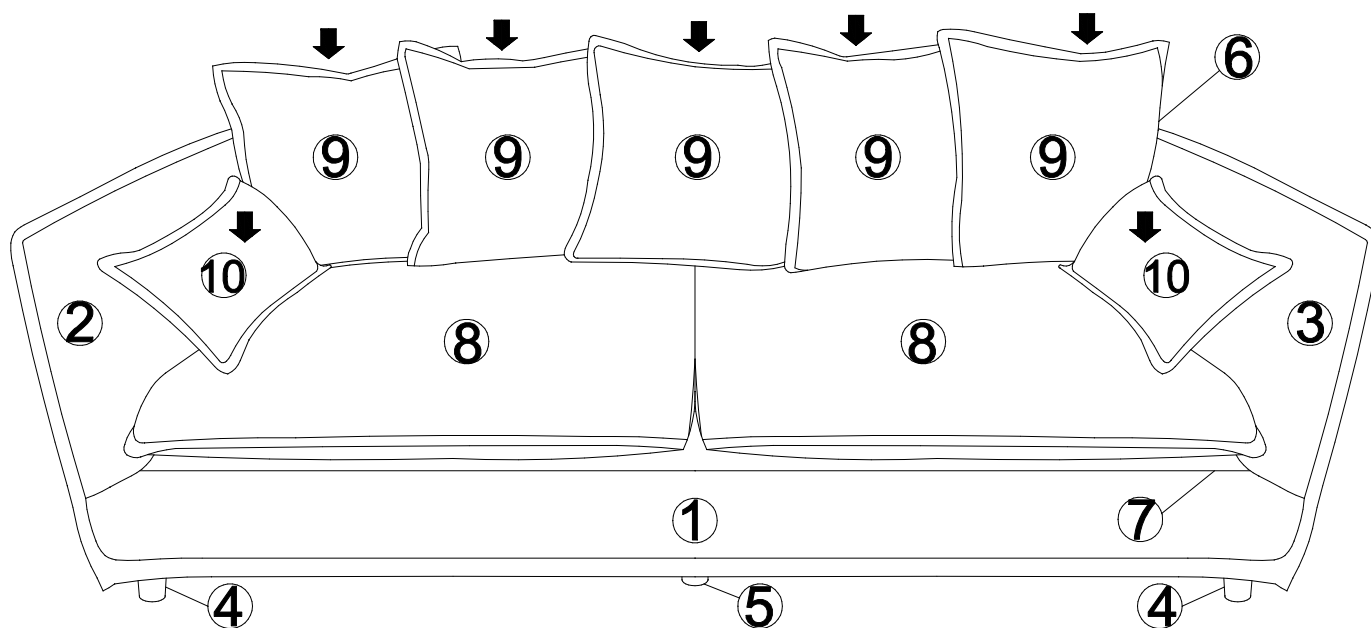
STEP 6

1. Open the compressed bag with scissors and take out 2 pieces of **Seat Cushion (8)** as shown with Figure 1.
2. Carefully put 2 pieces of **Seat Cushions (8)** to the assembled sofa.



STEP 7

Carefully put 5 pieces of **Back Pillows (9)** and 2 pieces of **Side Pillows (10)** to the assembled sofa as shown.



Assembly is complete. Your sofa is ready to enjoy now