

ASSEMBLY INSTRUCTIONS

EEI-4262

V0.09.28.21



Questions? Contact us!

609.256.9000 • cs@modway.com
www.modway.com

*modway

Let's get started!

*modway



Read through all of the instructions before starting



Care instructions are listed in the last step of this manual



Approx. 60 minutes assembly time



Make sure you have all parts and components before discarding any packing materials



2 people recommended for assembly

Only use hand tools to assemble this item. Do not use power tools. Do not tighten bolts or screws completely until all hardware is lined up and inserted into the holes.

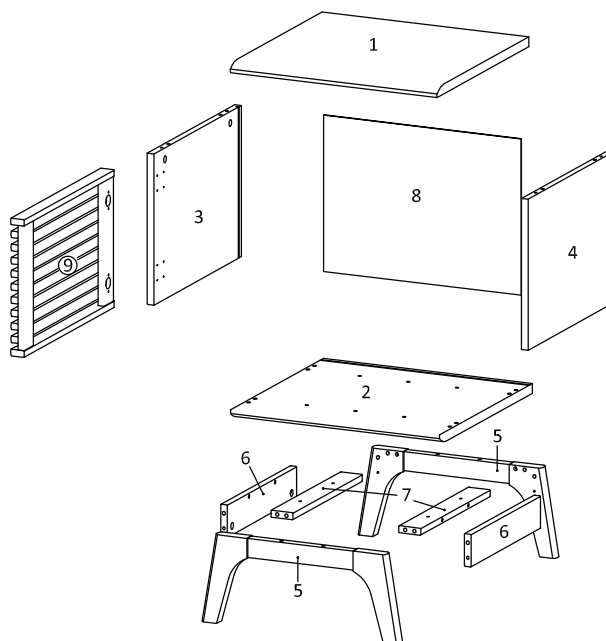
Do not over-tighten screws and bolts to avoid stripping the hardware or cracking the item.

Assemble your item on a flat, carpeted area, with plenty of space to work. This will prevent damage and scratches to your floors or the item while you're assembling the product.

Keep all components and packaging out of reach of children or animals to avoid risk of choking or suffocation.

Furniture components:

1	Top Board	x1
2	Bottom Board	x1
3	Side Board Left	x1
4	Side Board Right	x1
5	Assembly Leg	x2
6	Support Board 1	x2
7	Support Board 2	x2
8	Back Board	x1
9	Frame Door	x1



Provided hardware:

A		Cam Bolt $\varnothing 6 \times 35$ mm	x8
B		Cam Lock $\varnothing 15$ mm	x8
C		Wood Dowel $\varnothing 8 \times 30$ mm	x28
D		Screw M 7 x 50 mm	x4
E		Allen Key	x1
F		Wedge	x4
G		Screw M 3.5 x 15.5 mm	x4
H		Screw M 6.4 x 25 mm	x4
I		Screw M 4.5 x 12.5 mm	x12

J		Screw Cap $\varnothing 15$ mm	x4
K		Floor Protector	x4
L		Divider Wire	x3
HS26A		Hinge	x2

What you need:

Phillips Head Screwdriver

Wait!

Missing parts or hardware? Need assistance?
Contact us before returning your item. We're here to help!
609.256.9000 • cs@modway.com

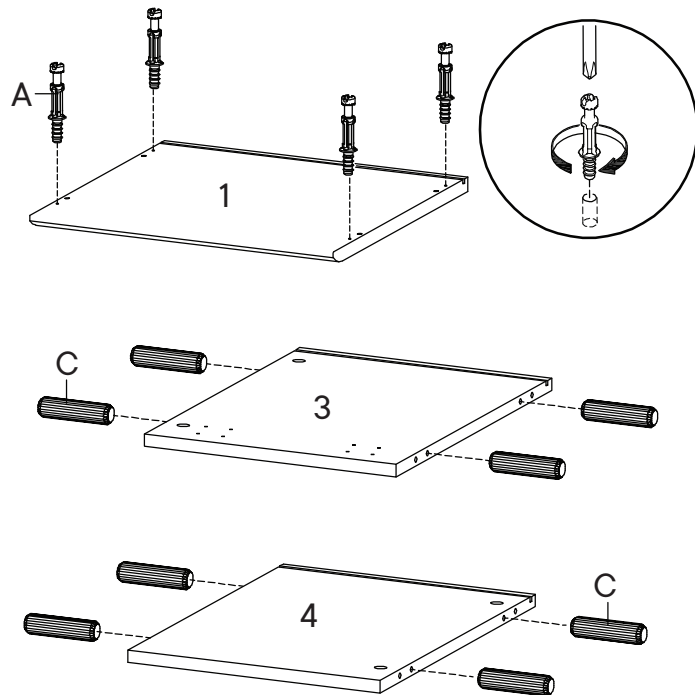
Step 1

HARDWARE

- A** Cam Bolt $\varnothing 6 \times 35$ mm x4
- C** Wood Dowel $\varnothing 8 \times 30$ mm x8

COMPONENTS

- 1** Top Board x1
- 3** Side Board Left x1
- 4** Side Board Right x1



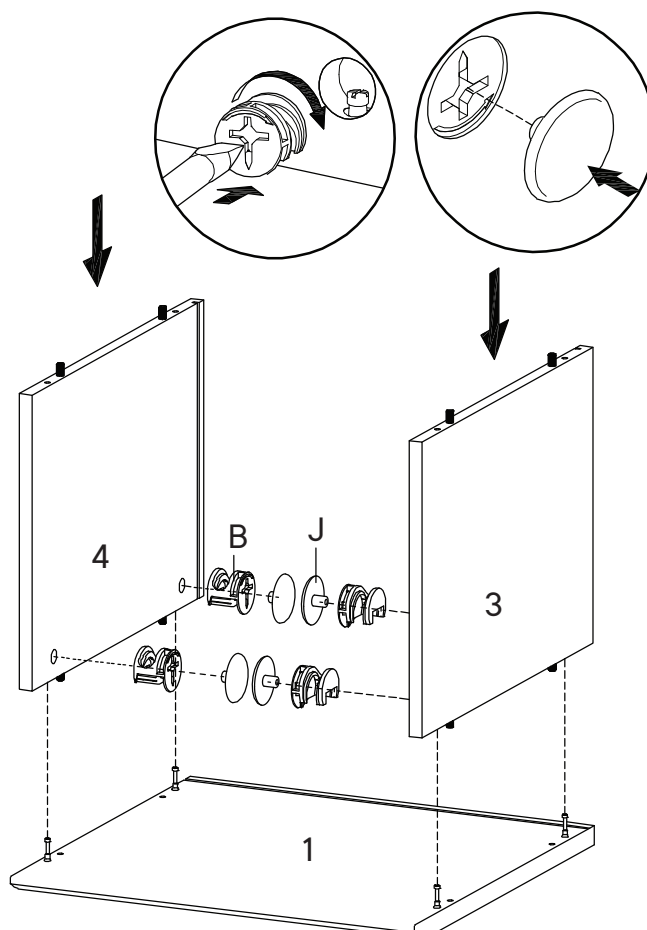
Step 2

HARDWARE

- B** Cam Lock $\varnothing 15$ mm x4
- J** Screw Cap $\varnothing 15$ mm x4

COMPONENTS

- 1** Top Board x1
- 3** Side Board Left x1
- 4** Side Board Right x1



Step 3

HARDWARE

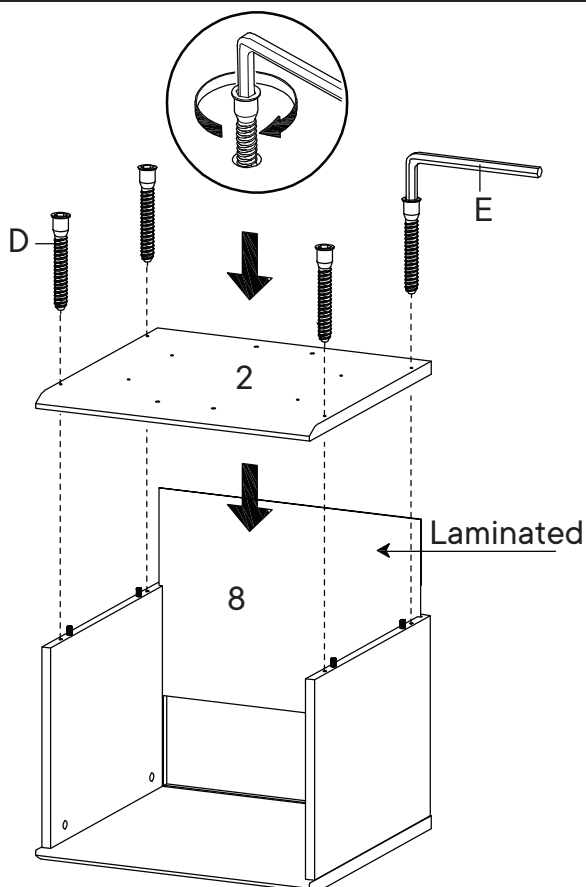
D Screw M 7 x 50 mm x4

E Allen Key x1

COMPONENTS

2 Bottom Board x1

8 Back Board x1



Step 4

HARDWARE

A Cam Bolt $\varnothing 6$ x 35 mm x4

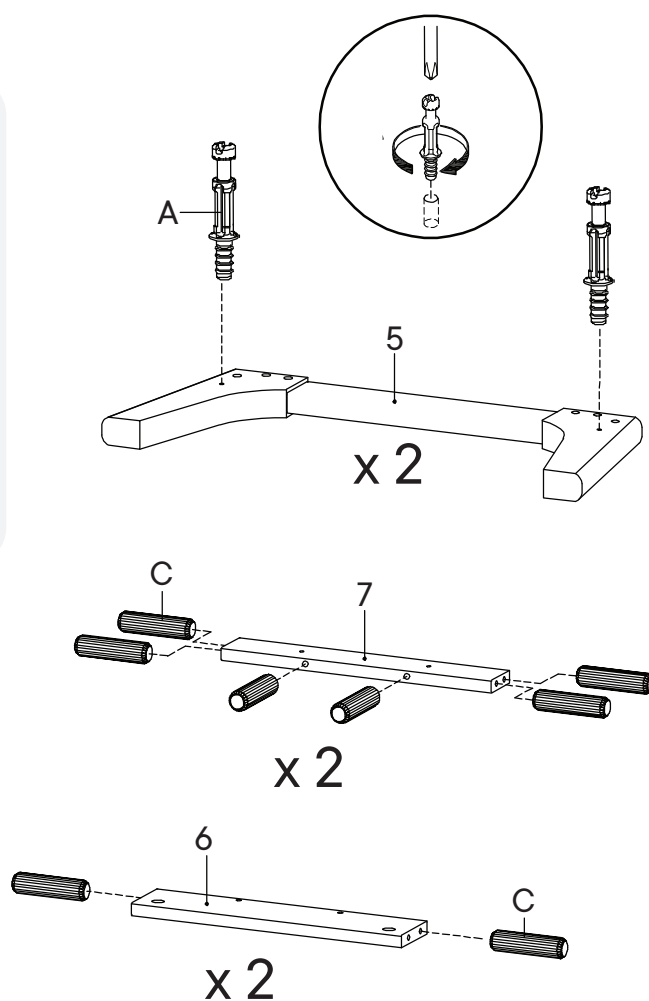
C Wood Dowel $\varnothing 8$ x 30 mm x16

COMPONENTS

5 Assembly Leg x2

6 Support Board 1 x2

7 Support Board 2 x2



Step 5

HARDWARE

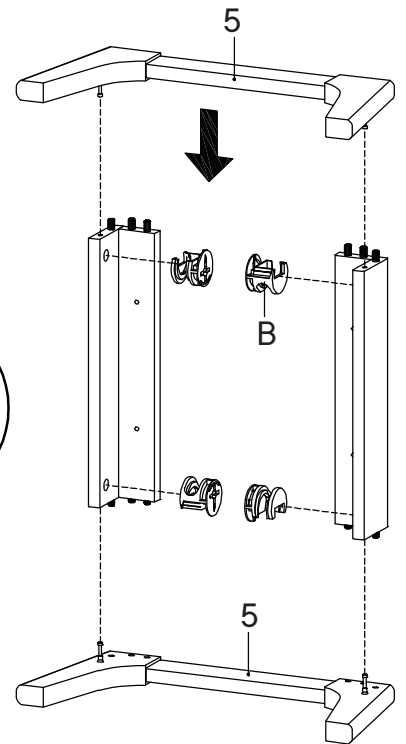
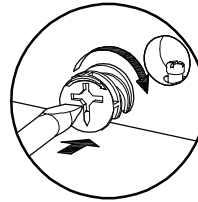
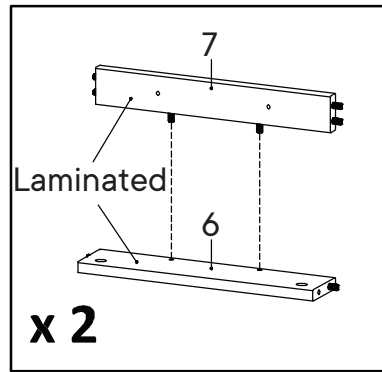
B Cam Lock Ø15 mm x4

COMPONENTS

5 Assembly Leg x2

6 Support Board 1 x2

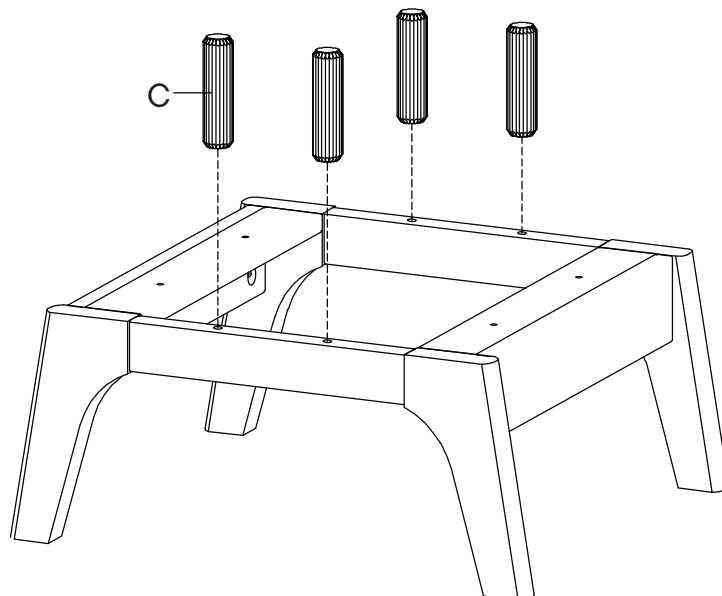
7 Support Board 2 x2



Step 6

HARDWARE

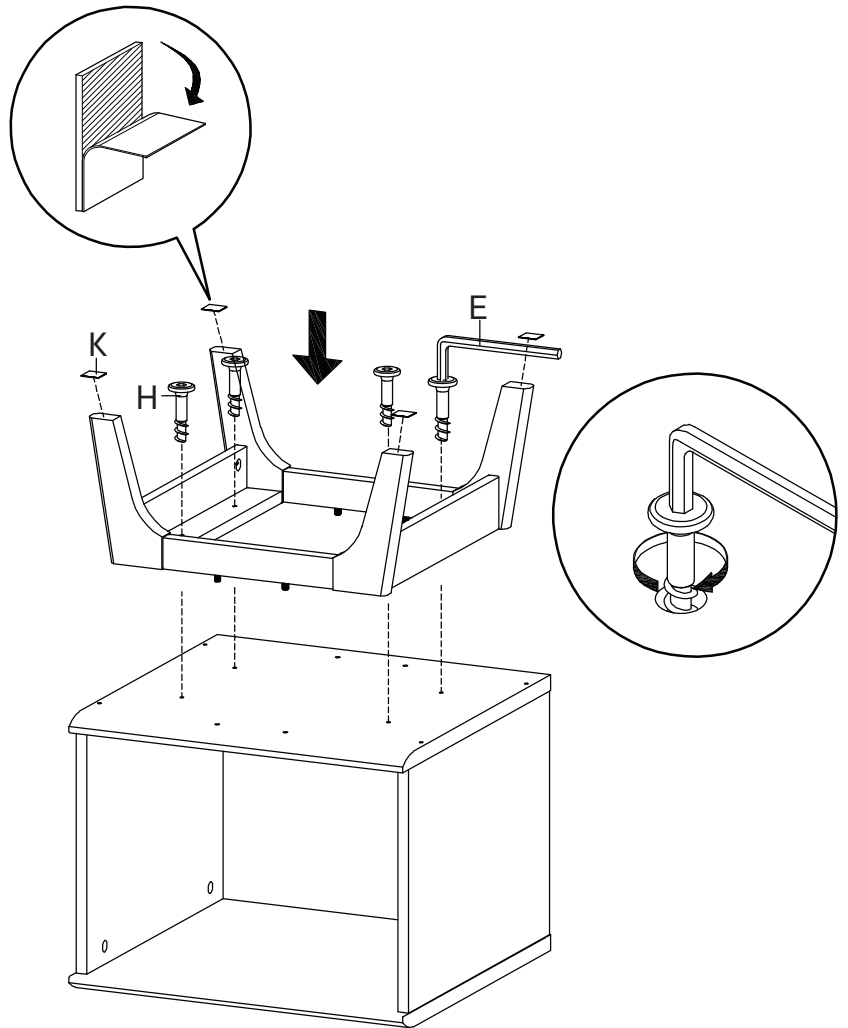
C Wood Dowel Ø8 x 30 mm x4



Step 7

HARDWARE

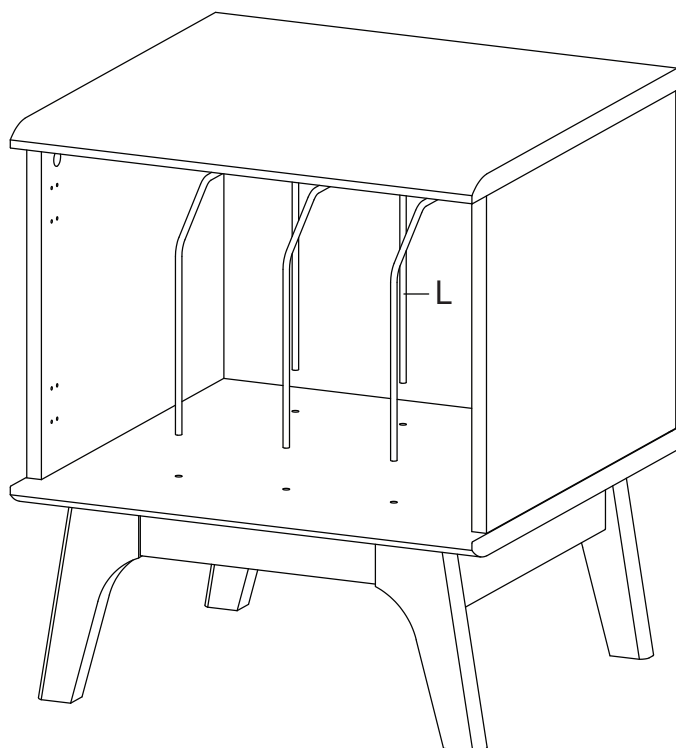
- E** Allen Key x1
- H** Screw M 6.4 x 25 mm x4
- K** Floor Protector x4



Step 8

HARDWARE

- L** Divider Wire x3



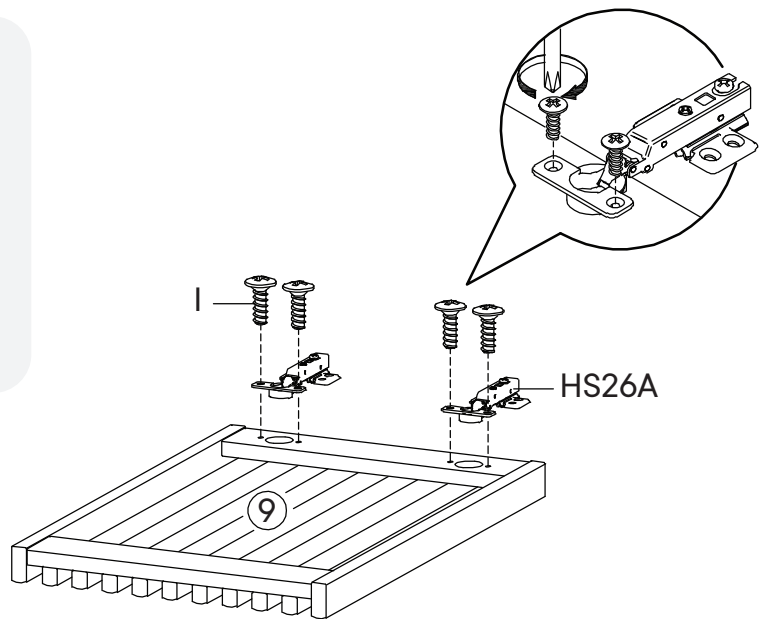
Step 9

HARDWARE

- 1 Screw M 4.5 x 12.5 mm x4
- HS26A Hinge x2

COMPONENTS

- 9 Frame Door x1



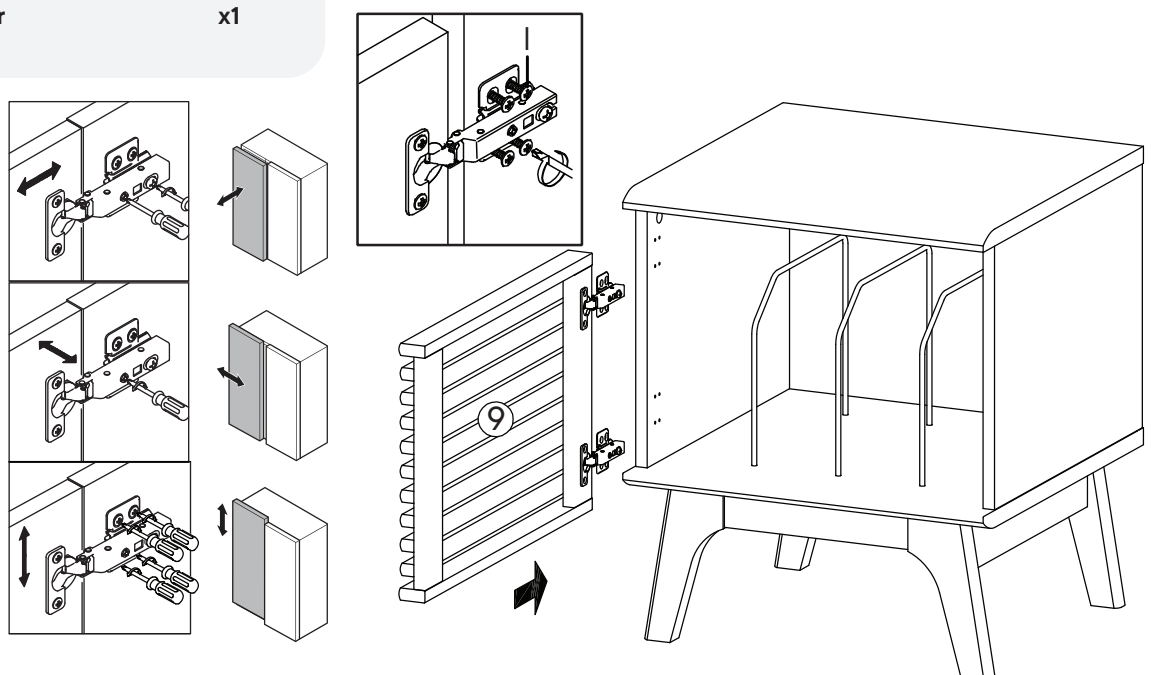
Step 10

HARDWARE

- 1 Screw M 4.5 x 12.5 mm x8

COMPONENTS

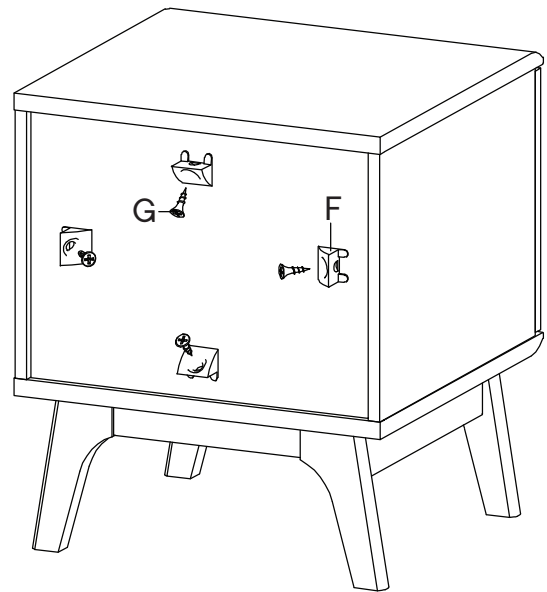
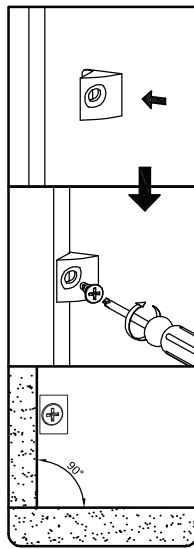
- 9 Frame Door x1



Step 11

HARDWARE

- F** Wedge x4
- G** Screw M 3.5 x 15.5 mm x4



Great job!

Cabinet assembly is complete.

♥ CARING FOR YOUR ITEM

Indoor use only.

Not contract grade.

Clean using a non-abrasive cloth and a mild cleaner.

Never use harsh chemicals, as they could damage the finish or integrity of the item.



CONNECT WITH US!   

Tag us [@modway_furniture](#) and [#modway](#) for a chance to be featured.