

ASSEMBLY INSTRUCTIONS
COASTER FINE FURNITURE



600165
Glider w/ Ottoman

REVISION 0: 10/28/2018
REVISION 1: 05/16/2019
REVISION 2: 03/02/2020

ASSEMBLY INSTRUCTIONS

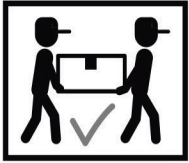
ASSEMBLY TIPS:

1. Remove hardware from box and sort by size.
2. Please check to see that all hardware and parts are present prior to start of assembly.
3. Please follow attached instructions in the same sequence as numbered to assure fast & easy assembly.



WARNING!

1. Don't attempt to repair or modify parts that are broken or defective. Please contact the store immediately.
2. This product is for home use only and not intended for commercial establishments.



ASSEMBLY TIME 25 MINUTES

PARTS IDENTIFICATION

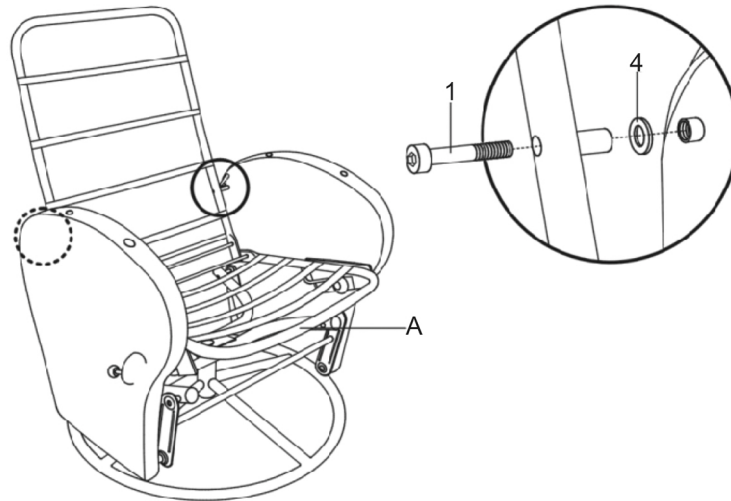
A	MAIN FRAME		1PC
BN	CUSHION		1PC
C	BASE		1PC
DN	LEFT ARMREST		1PC
EN	RIGHT ARMREST		1PC
FN	OTTOMAN FRAME		1PC

GN	OTTOMAN CUSHION		1PC
H	OTTOMAN BASE COVER		1PC

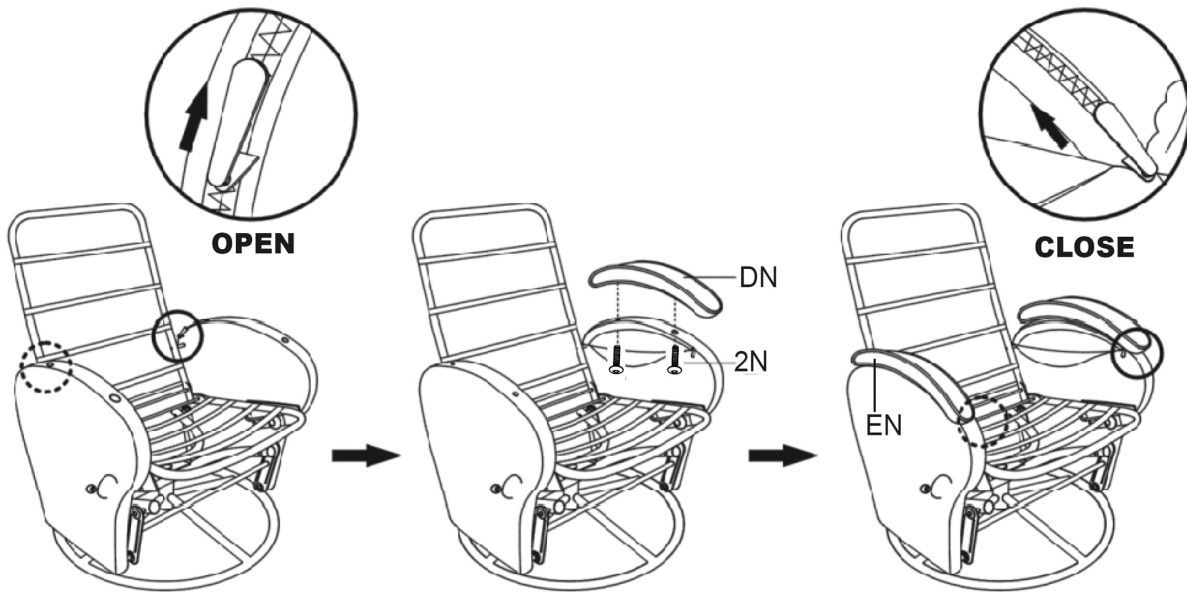
HARDWARE IDENTIFICATION

1	ALLEN BOLT-LARGE M8x65MM		2PC
2N	ALLEN BOLT-SMALL 1/4" x35		4PC
3N	BOLT 1/4" x16MM		4PC
4	WASHER		2PC
5	ALLEN KEYS		1PC

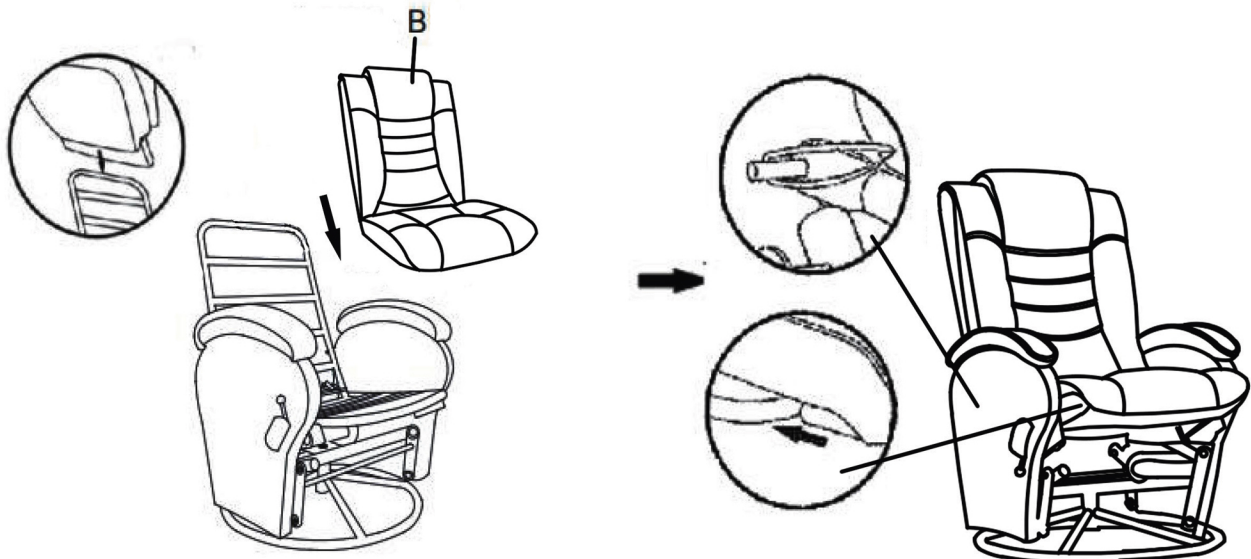
ASSEMBLY INSTRUCTIONS
STEP 1



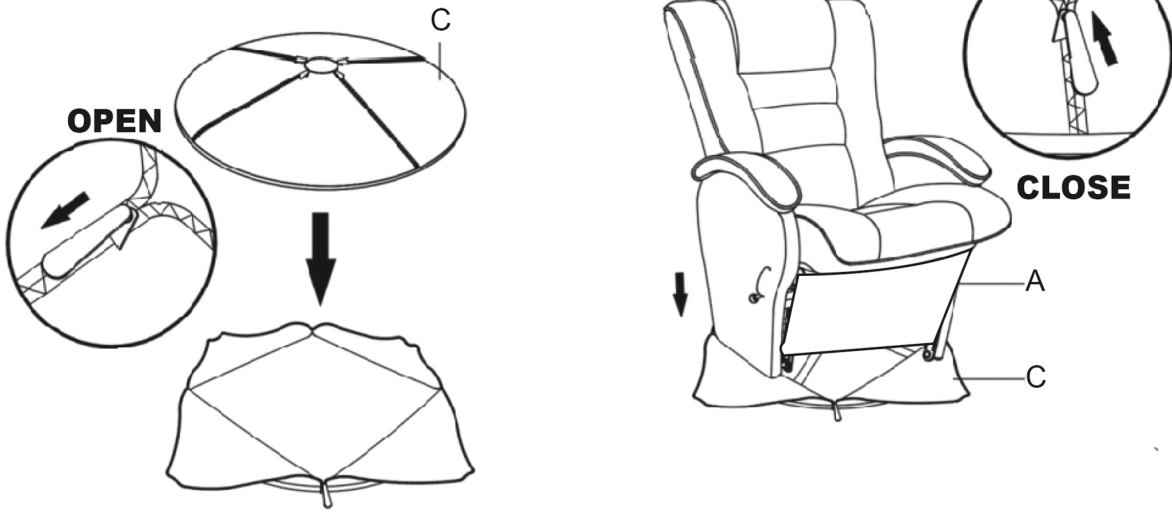
STEP 2



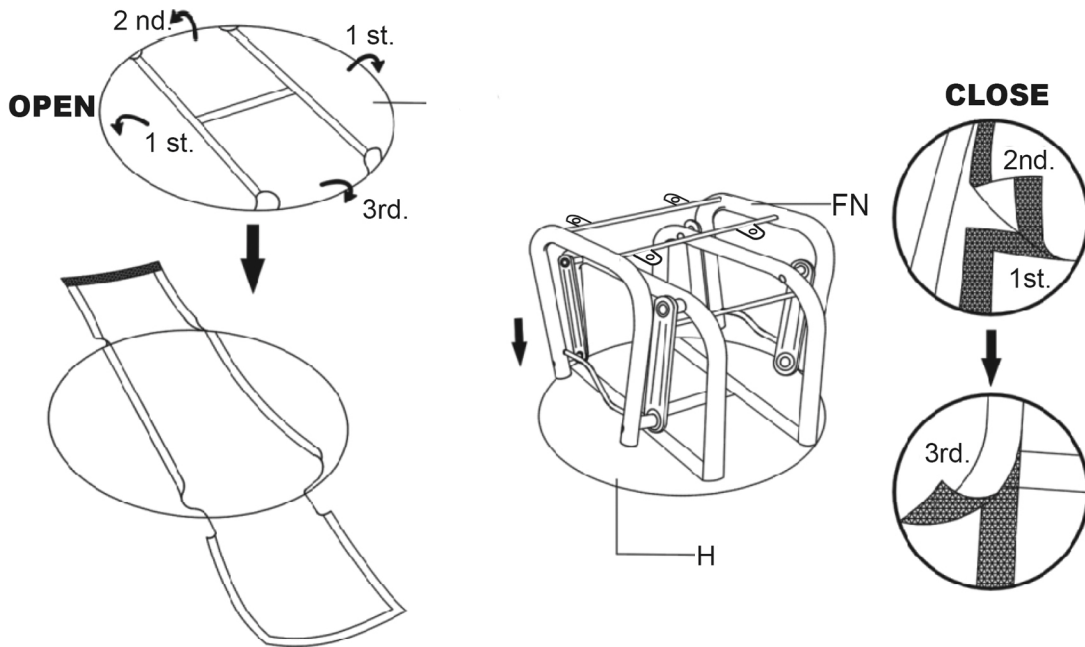
STEP 3



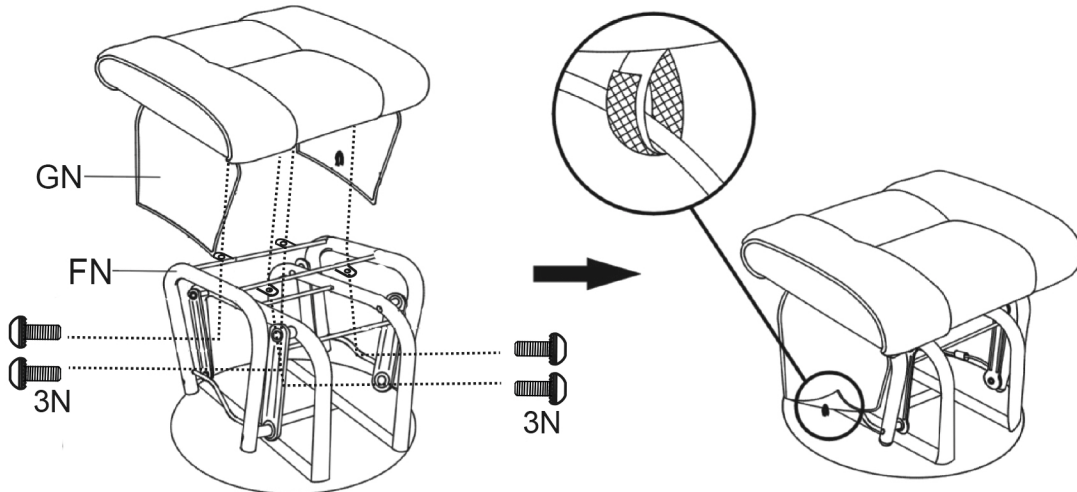
ASSEMBLY INSTRUCTIONS
STEP 4



STEP 5



STEP 6





Note : Dimension tolerance $\pm 5\%$