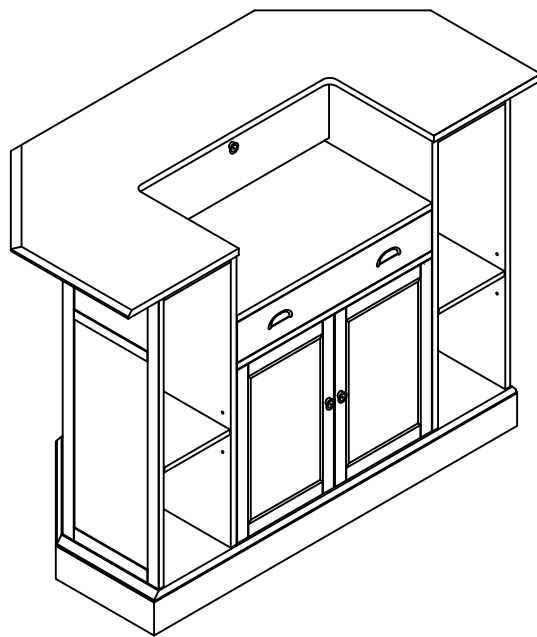


**ASSEMBLY INSTRUCTIONS**  
**COASTER FINE FURNITURE**



Fine Furniture for every stage of life

**100175(B1-B2)**  
***Bar unit***

ITEM : **100175**



## ASSEMBLY INSTRUCTIONS

### ASSEMBLY TIPS:

- 1.Remove hardware from box and sort by size.
- 2.Please check to see that all hardware and parts are present prior to start of assembly.
- 3.Please follow attached instructions in the same sequence as numbered to assure fast & easy assembly.

### WARNING !



1. Don't attempt to repair or modify parts that are broken or defective. Please contact the store immediately.
2. This product is for home use only and not intended for commercial establishments.



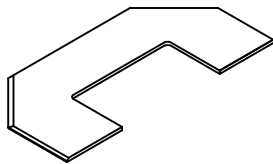
Assembly time

15 minutes

## PARTS IDENTIFICATION

B1 (BOX 1)

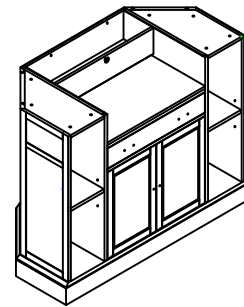
A TOP



1PC

B2 (BOX 2)

B BASE



1PC

## HARDWARE IDENTIFICATION

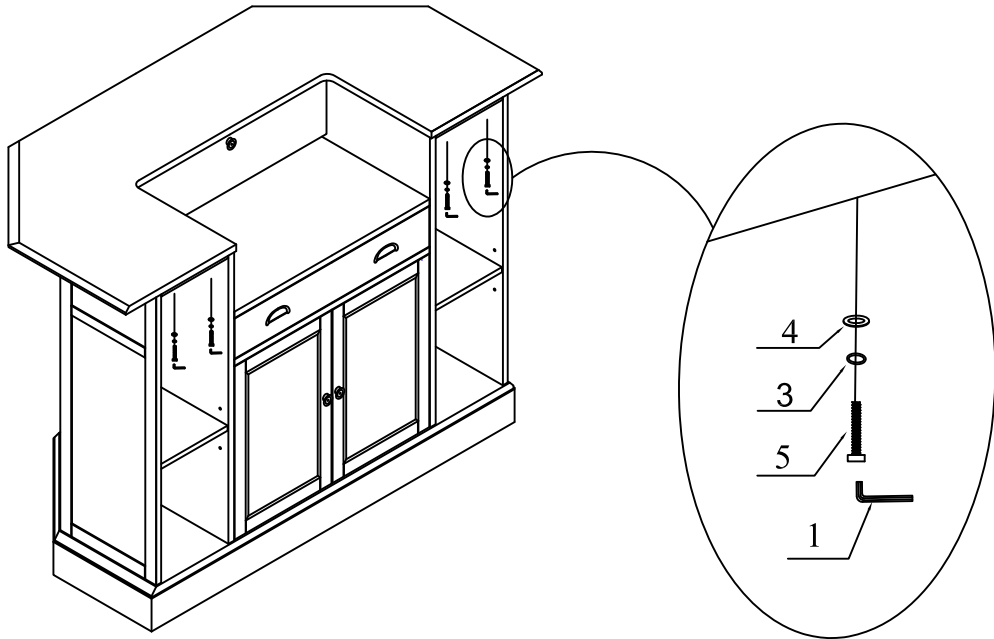
Z-B2(BOX 2)-Hardware pack is located in 100175B2

- |   |              |  |                     |       |
|---|--------------|--|---------------------|-------|
| 1 | ALLEN WRENCH |  | 4mm<br>BLACK        | 1PC   |
| 2 | SHORT BOLT   |  | Ø1/4"x1/2"<br>BLACK | 4PCS  |
| 3 | LOCK WASHER  |  | 1/4"<br>BLACK       | 12PCS |

- |   |             |  |                       |       |
|---|-------------|--|-----------------------|-------|
| 4 | FLAT WASHER |  | Ø19mmxØ6.5mm<br>BLACK | 12PCS |
| 5 | LONG BOLT   |  | Ø1/4"x1-1/8"<br>BLACK | 8PCS  |
| 6 | ANGLE IRON  |  | 23x19x2mm<br>BLACK    | 2PCS  |

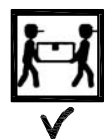
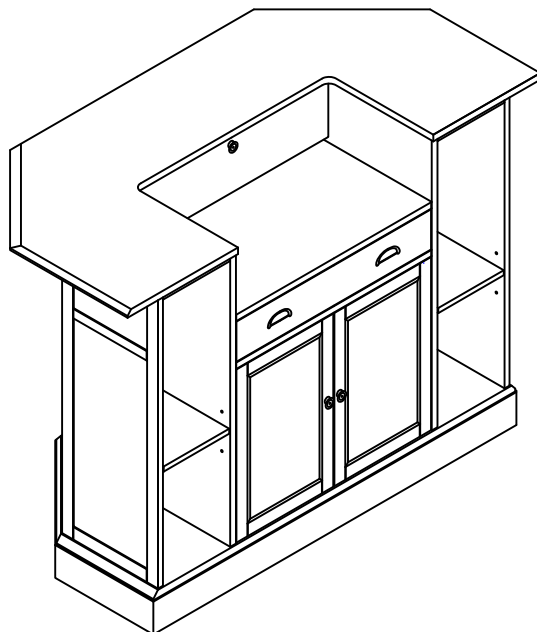
ITEM : **100175**

**STEP 3**



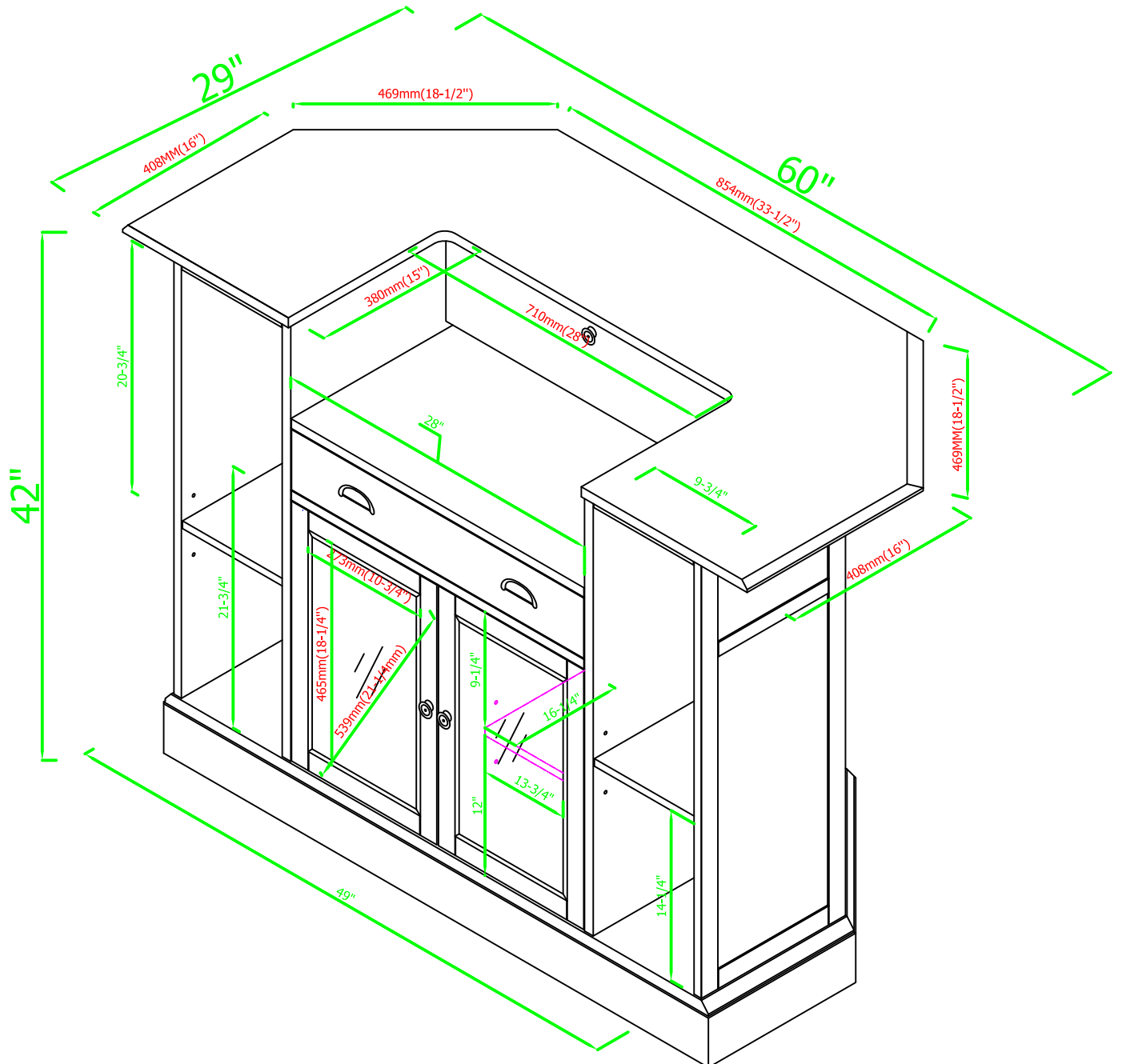
**STEP 4**

**COMPLETE**



ITEM : **100175**

**ASSEMBLY INSTRUCTIONS**  
**PRODUCT DIMENSION**



Note: Dimension tolerance  $\pm 5\%$