

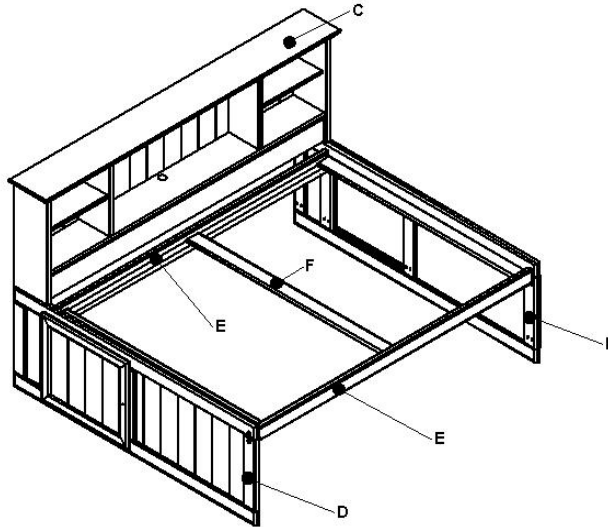


**COASTER TETON**      **7030-00391**  
**SPACESAVER BED INSTRUCTIONS**

**4855 HEADBOARD**

**4856 TWIN ENDS**

**4857 FRAME**



**PARTS LIST:**

- A) 8 -4 1/4" Lag Bolts
- B) 8 -Black Steel Washers
- C) 1 -Cheyenne Headboard (Bunkhouse or Sedona)
- D) 1 - each Head End & Foot End Assembly (Twin or Full)
- E) 2 -3 1/4" x 75" Mattress Rails w/Support Cleats
- F) 3 -3 1/2" x 38 1/2" Mattress Supports for Twin or 3 1/2" x 53 1/2" Mattress Supports for Full
- G) 6 -1 1/4" Wood Screws
- H) Hardware Pack (Packaged with the headboard) 2-2"X4" Brackets, 2-1/2"X2"STRAIGHT BRACKETS and 16-#8X1" Screws

**TOOLS REQUIRED:**

- 1) 7/16" Wrench or Socket Wrench
- 2) Phillips Head Screwdriver

NOTE: Tool recommended: Electric driver with 7/16" socket

**ASSEMBLY INSTRUCTIONS:**

**NOTE:**

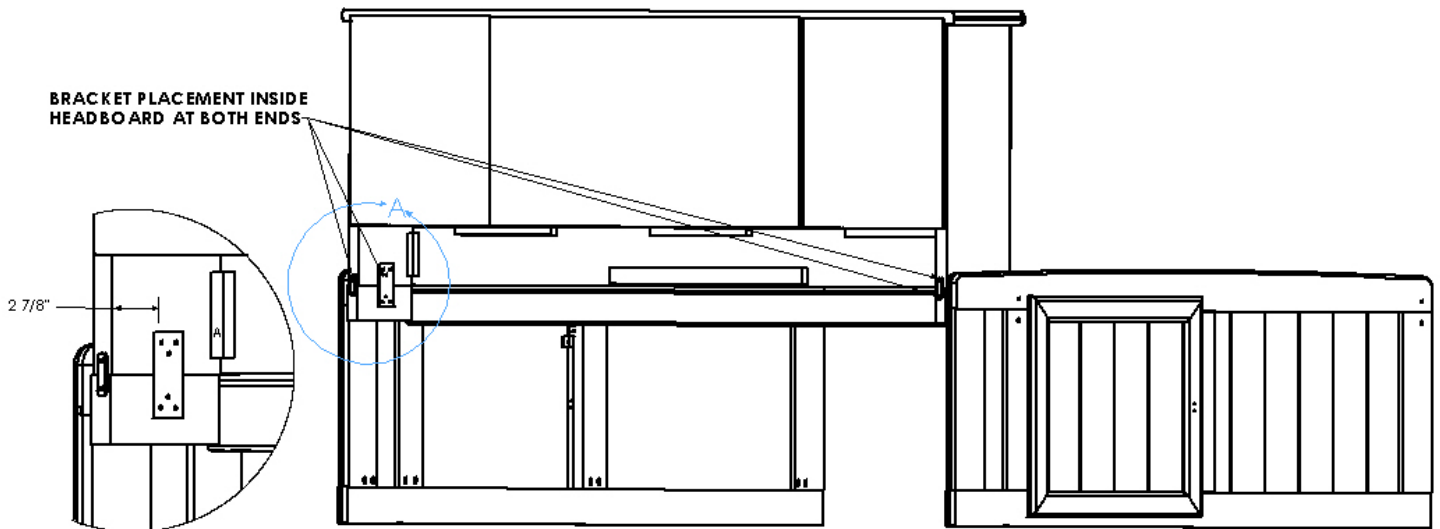
**Make sure you have all parts before beginning assembly. If you need a part, contact the dealer where you purchased your bed.**

- 1) Attach two mattress rails(E) to headboard/footboard assemblies(D) with 8 lag bolts and 8 washers, and tighten.
- 2) **Place 3 mattress supports on mattress rail support cleats(F), with one support in the center, and a support pushed tightly against each end assembly.**
- 3) **Secure mattress supports with 6 wood screws.**
- 4) Add the foundation and proper thickness mattress.(See dealer for details)

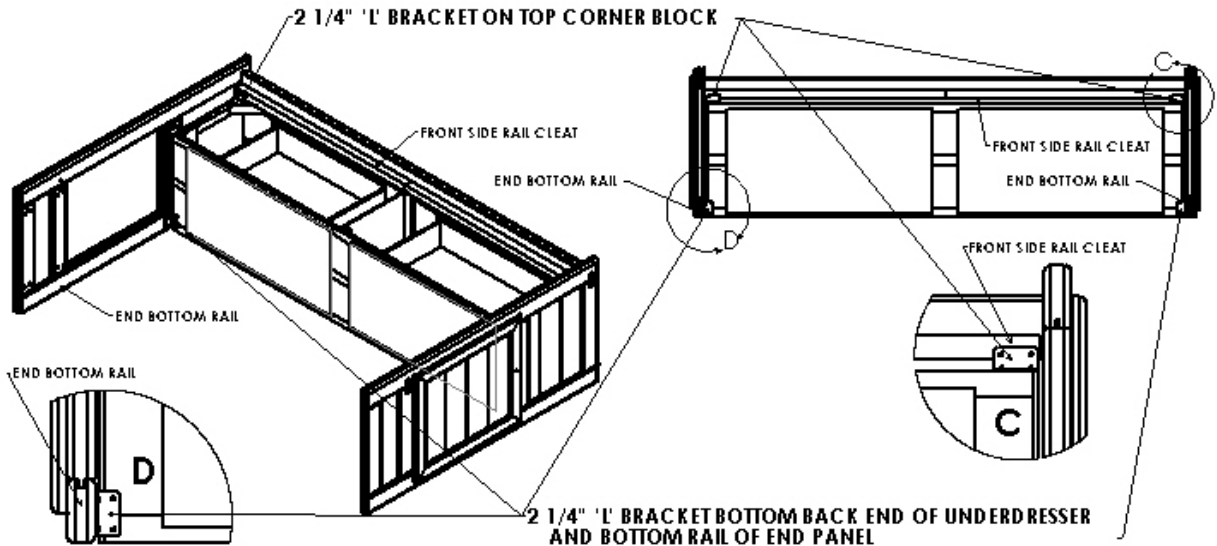


**COASTER TETON** **7030-00391**  
**SPACESAVER BED INSTRUCTIONS**

**HEADBOARD BRACKET PLACEMENT**



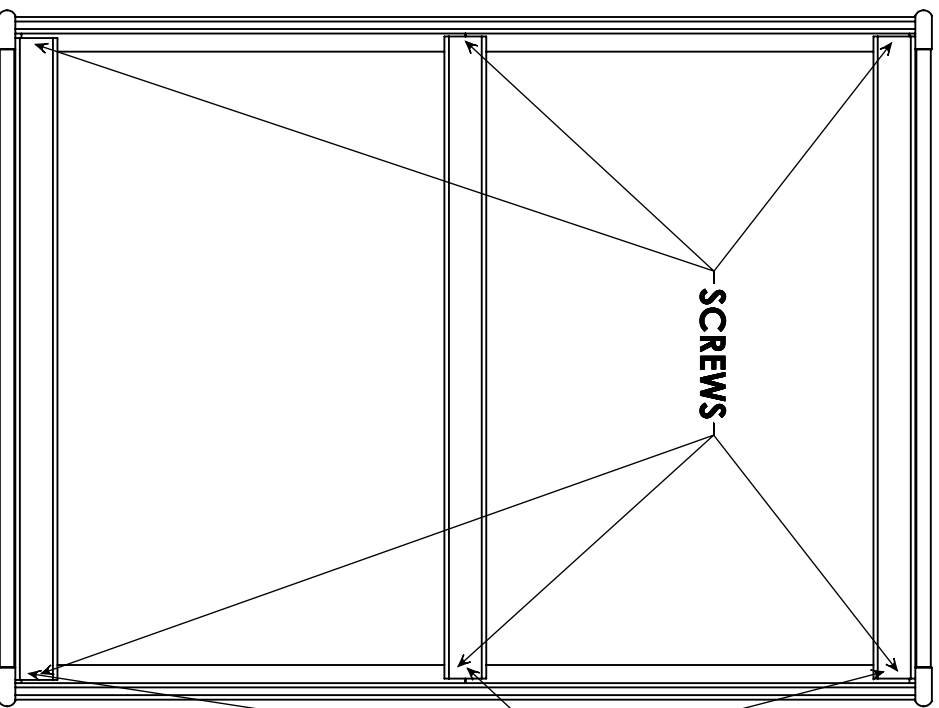
- 5) Attach one 1/2" x 2" straight bracket at each end of the headboard spanning the joint between the top rail of the ends (D) and the bottom edge of the headboard uprights.
- 6) Attach on 2x4' bracket inside each end centered on the headboard ends



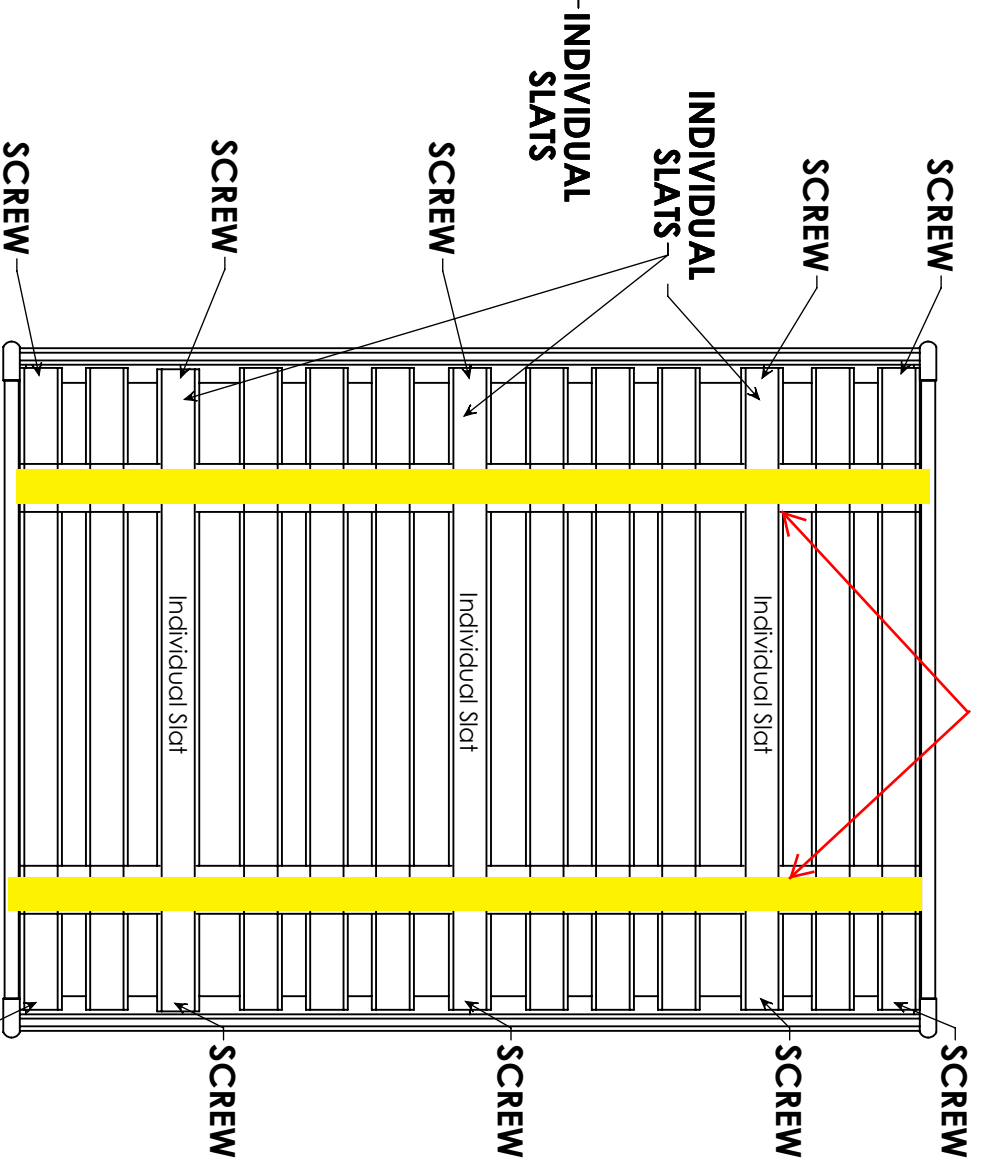
- 7) Attach 2 1/4" "L" brackets to the top of the underdresser corner blocks at each end and to the back of the front side rail cleat as shown in Detail C to the right above. Use two of the 2 1/4" brackets to attach the back, bottom ends of the underdresser to the bottom rail of each end panel as shown in Detail D to the left above.

REVISED: 01/22/2013

When used with a slot roll, the three individual slats should be placed evenly in the gaps and underneath the strapping before fastening.



Installation of individual slats for use with Bunkie Board (Bunkie Board sold separately) See your retailer for purchase of Bunkie Board



Installation of individual slats for use with Slot Roll (Slot roll sold separately) See your retailer for purchase of Slot Roll