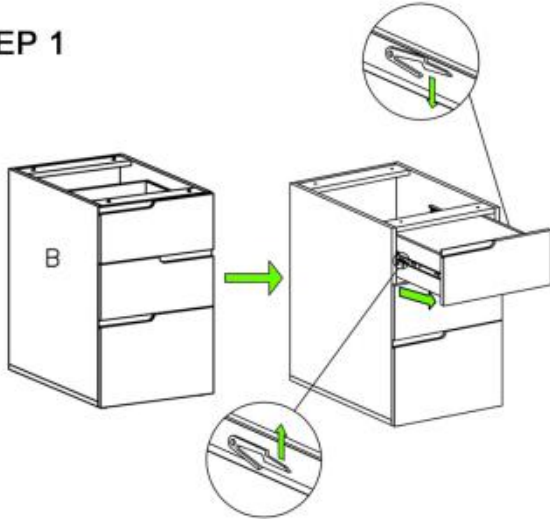
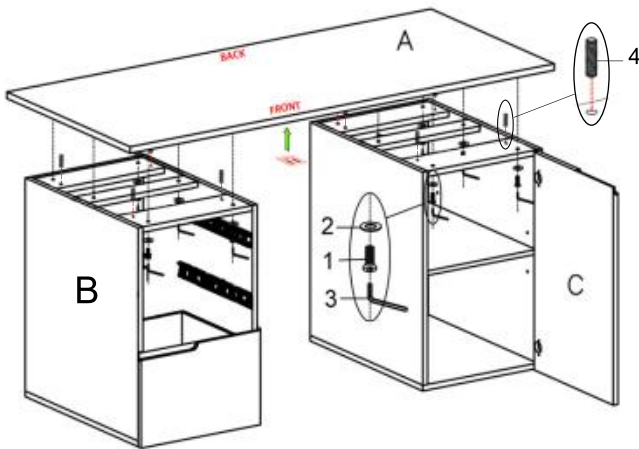


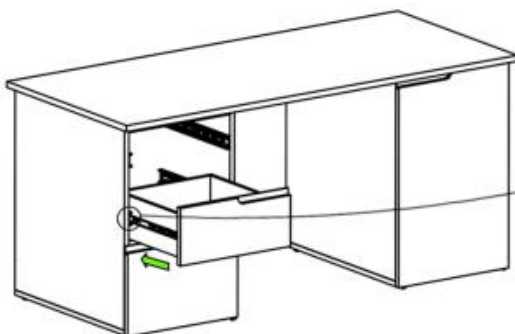
THANK YOU FOR PURCHASING THIS QUALITY PRODUCT.
 BE SURE TO CHECK ALL PACKING MATERIAL CAREFULLY FOR SMALL PARTS THAT MAY HAVE COME LOOSE INSIDE THE CARTON DURING SHIPMENT.




STEP 1


Remove the top two drawers in cabinet B before install the table top. Put them back after fasten board A to cabinet B and C.

STEP 2


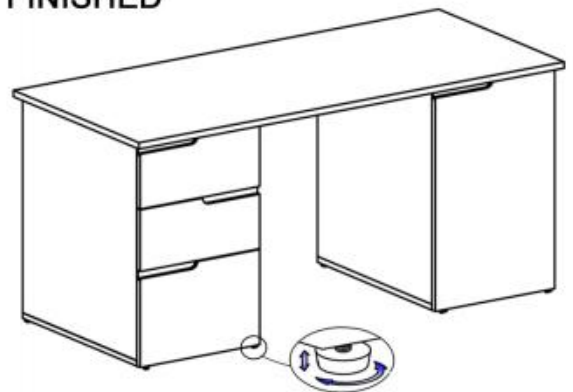
1. Put (4) on the holes of cabinet B and C (4 on each side).
2. Use them to locate, **please orient board A according to the indication label underneath it.**
3. Connect board A with cabinet B and C, fasten all 12 screws.

STEP 3

PART LIST

NO	DECS	SIZE (MM)	SKETCH	QTY
A	TOP	1600*700*21		1PC
B	LEFT CABINET	450*658*729		1PC
C	RIGHT CABINET	450*658*729		1PC

HARDWARE LIST

NO	DECS	SIZE (MM)	SKETCH	QTY
1	SCREW	M8*35		12PCS
2	FLAT WASHER	Φ19*2*Φ8		12PCS
3	ALLEN KEY	M5		1PC
4	WOODEN PIN	M8*30		8PCS

FINISHED


Adjustable glides are beneath the cabinet, adjust it if needed.

