

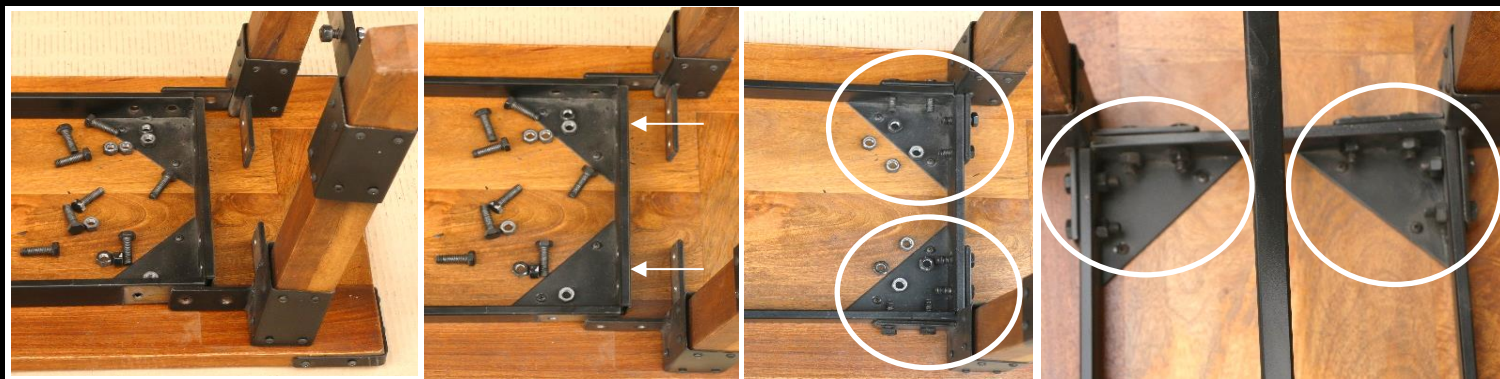
ASSEMBLY INSTRUCTIONS

IN THE CARTON YOU GET:

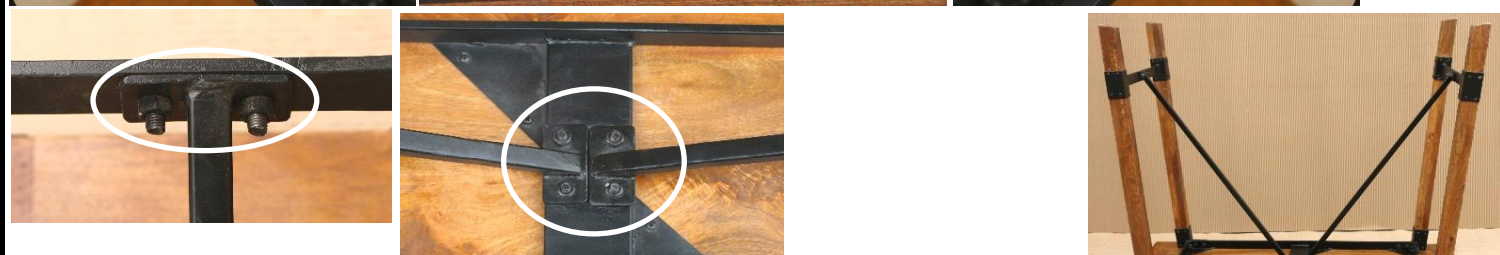
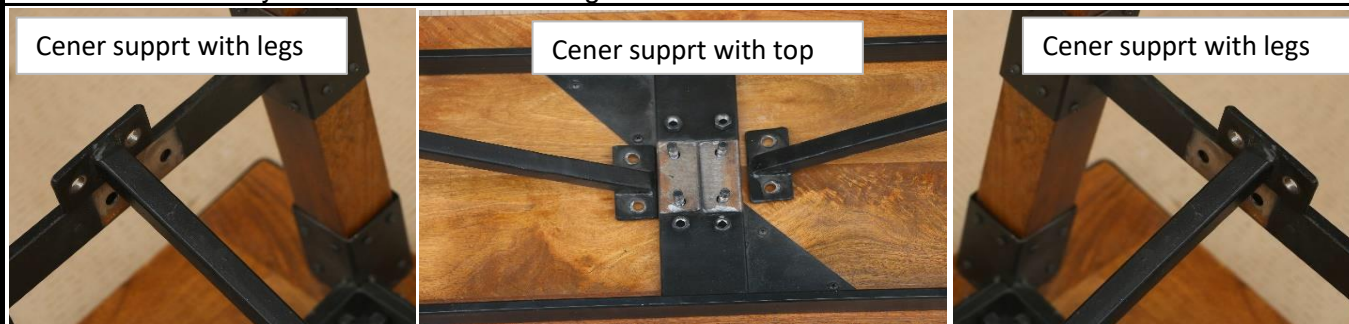


TOP OF TABLE, TWO SETS OF LEGS SET/2, 2 CENTER SUPPORTS & WRENCH (TOOL)

STEPS OF ASSEMBLING



- # Put the Set (top, legs, center support) as showed above in PIC # "A".
- # Open all the nut/bolts already attached to the set of leg, underneath of top & center supports.
- # Align the set of leg to the holes according to same set of marked
- # Close the set of nut bolts by wrench, according to provided set of holes as shown above
- # Like the same way attach another set of leg of another hand side



- # Align the any of hand side center support according to the marking
- # And close the nut/bolt by wrench
- # Same way another hand side center support to be attached
- # Center supports will be attached both to the center of top & simultaneously to the center of legs per marking



COMPLETE PRODUCT