

ASSEMBLY INSTRUCTIONS

IN THE CARTON : 1 BASE & 1 TUB SEAT WITH TOOLS



STEPS OF ASSEMBLING:



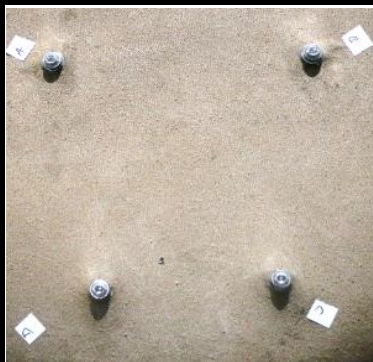
FRONT FACING



BACK FACING



Keep the base & seat facing front whereas legs marked with 'A' & 'B' will face the front & back 'C' & 'D'



Open the nuts underneath the seat, match the legs with same alphabets & attach with help of Allen key

COMPLETE PRODUCT



