



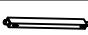


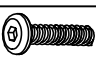

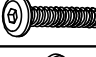






# ASSEMBLY INSTRUCTIONS

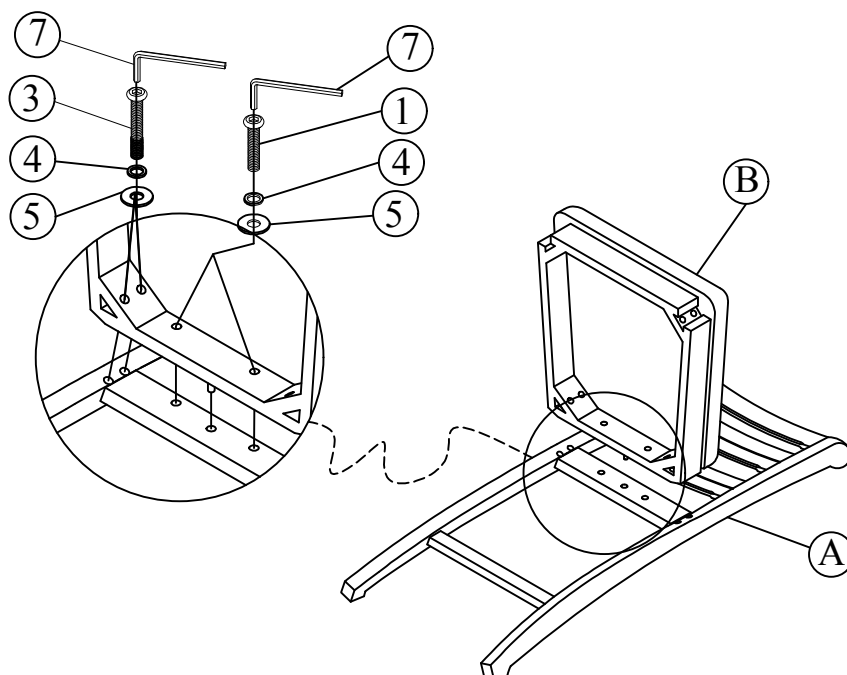
**MODEL # : 5910-541 BELLAMY LANE LADDER BACK COUNTER STOOL (V#12600CTYD1)**

**NOTE: THIS ITEM NOT RECOMMENDED FOR COMMERCIAL USE  
KEEP THIS DOCUMENT FOR REFERENCE IN CASE PARTS ARE NEEDED  
DO NOT TIGHTEN SCREWS UNTIL COMPLETELY ASSEMBLED!!**

No		PARTS LIST	Q'TY
A		CHAIR BACK	1PC
B		SEAT FRAME	1PC
C		LEFT LEG	1PC
D		RIGHT LEG	1PC
E		FRONT STRETCHER	1PC
F		SIDE STRETCHER(LEFT)	1PC
G		SIDE STRETCHER(RIGHT)	1PC

No				Q'TY
1		BOLT	Ø5/16" x 1-1/2"	2PCS
2		BOLT	Ø5/16" x 2"	4PCS
3		BOLT	Ø5/16" x3"	4PCS
4		LOCK WASHER	Ø5/16" x 10 x 1.1mm	10PCS
5		FLAT WASHER	Ø5/16" x 18 x 2mm	10PCS
6		SCREW	1-1/2" x 8mm	6PCS
7		WRENCH	M4mm	1PC

STEP 1

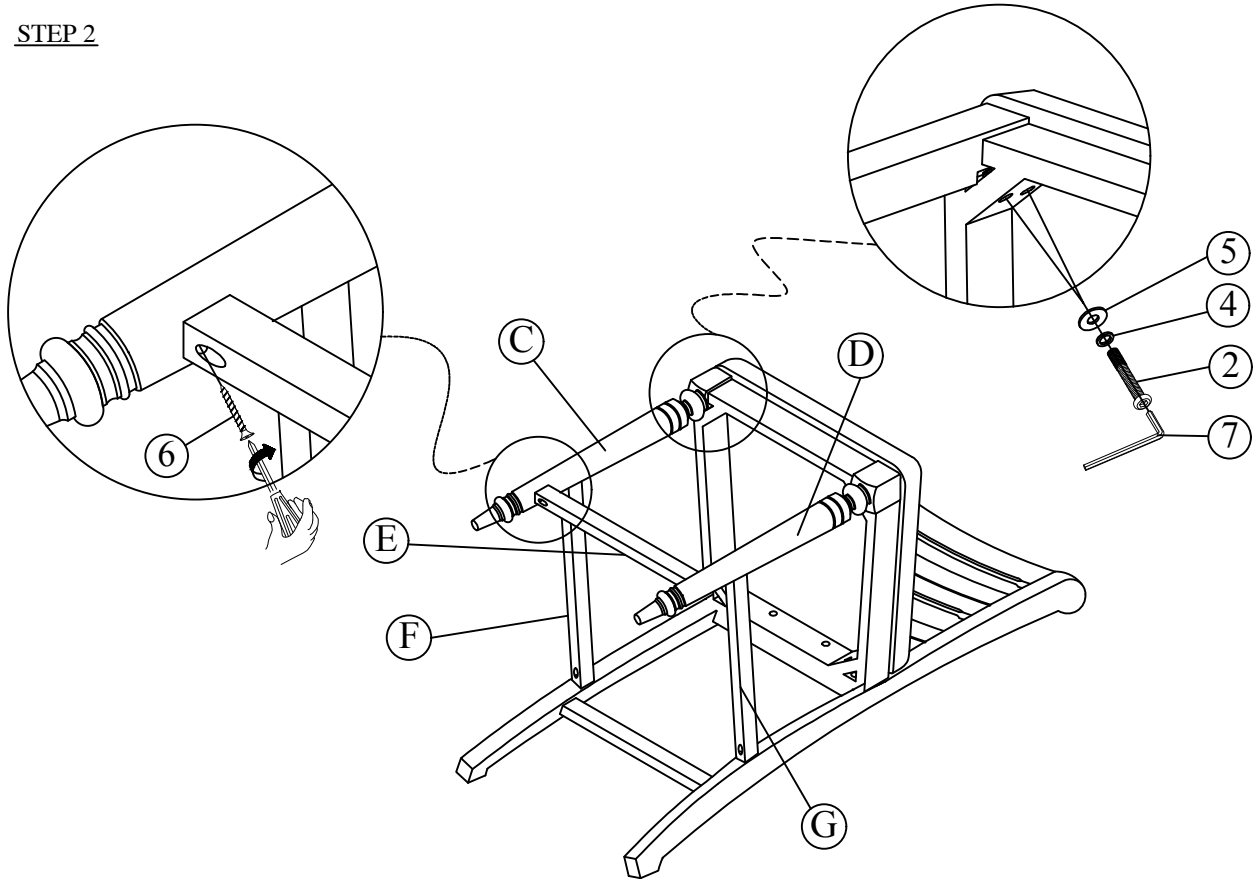


# ASSEMBLY INSTRUCTIONS

MODEL # : 5910-541 BELLAMY LANE LADDER BACK COUNTER STOOL (V#12600CTYD1)

**NOTE: THIS ITEM NOT RECOMMENDED FOR COMMERCIAL USE  
KEEP THIS DOCUMENT FOR REFERENCE IN CASE PARTS ARE NEEDED  
DO NOT TIGHTEN SCREWS UNTIL COMPLETELY ASSEMBLED! !**

## STEP 2



## FINAL

