

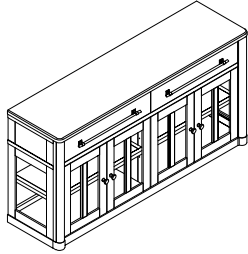
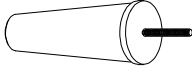
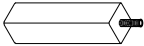
ASSEMBLY INSTRUCTIONS


MODEL # : 338-526

BUFFET

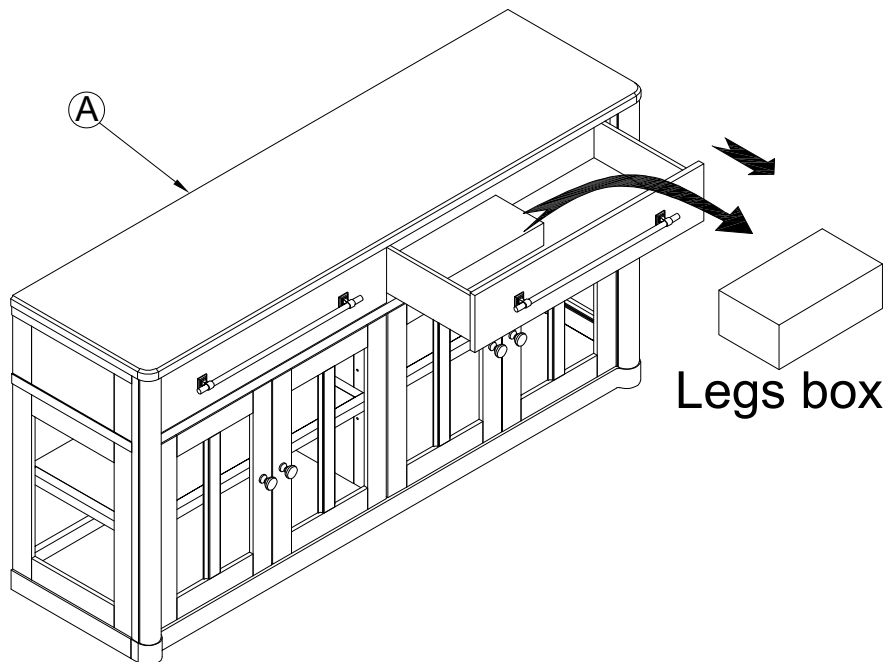
(V#12600HMVY)

NOTE: KEEP THIS DOCUMENT FOR REFERENCE IN CASE PARTS ARE NEEDED
DO NOT TIGHTEN SCREWS UNTIL COMPLETELY ASSEMBLED!!
UNIT SHOULD BE ASSEMBLED BY TWO OR MORE PEOPLE.

No		PART LIST	Q'TY
A		BUFFET	1PC
B		LEGS	4PCS
C		SUPPORT LEG	1PC

No		HARDWARE LIST		Q'TY
1		Furniture Tipping Restraint (Not included screwdriver)		1PC

STEP 1



ASSEMBLY INSTRUCTIONS

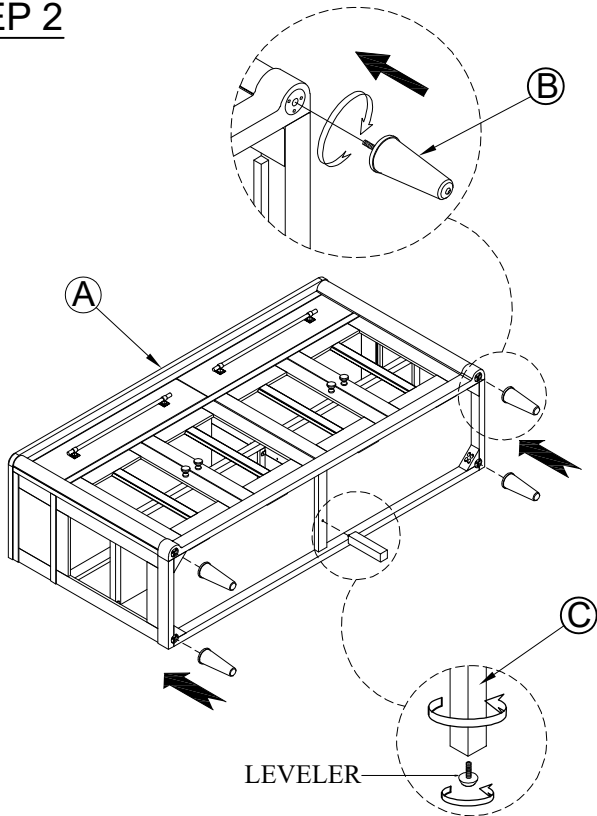
MODEL # : 338-526

BUFFET

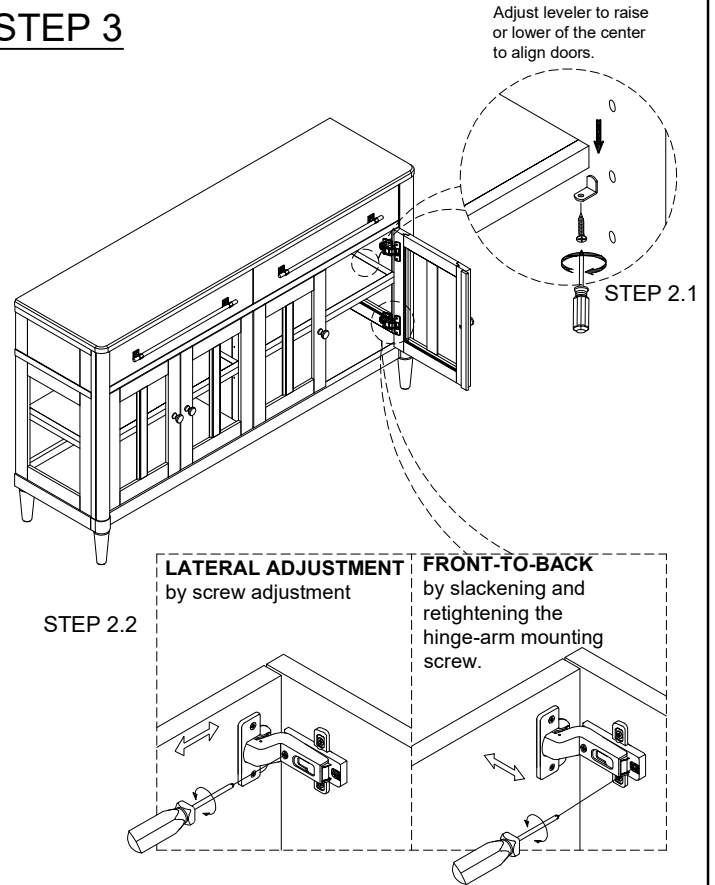
(V#12600HMY)

NOTE: KEEP THIS DOCUMENT FOR REFERENCE IN CASE PARTS ARE NEEDED
DO NOT TIGHTEN SCREWS UNTIL COMPLETELY ASSEMBLED!!
UNIT SHOULD BE ASSEMBLED BY TWO OR MORE PEOPLE.

STEP 2

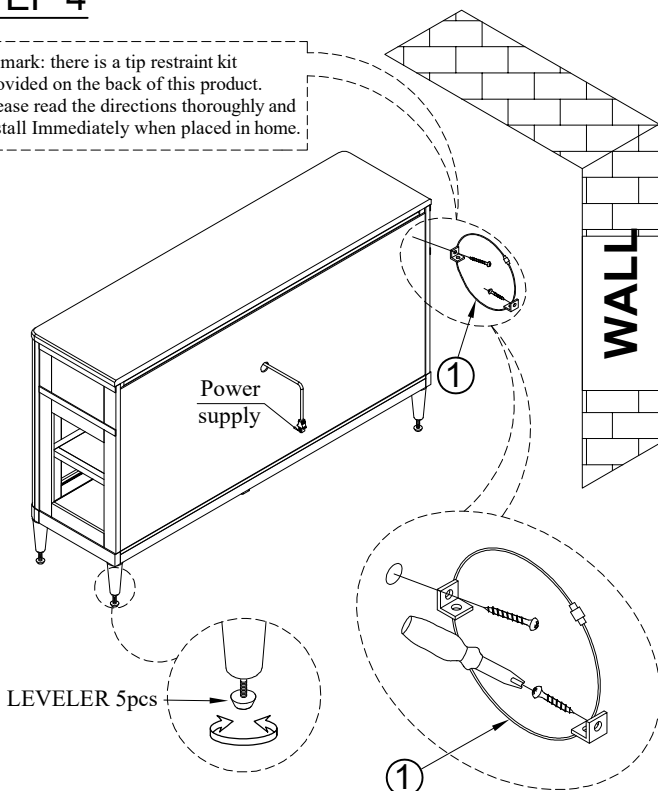


STEP 3



STEP 4

★ Remark: there is a tip restraint kit provided on the back of this product. Please read the directions thoroughly and install immediately when placed in home.



COMPLETED

