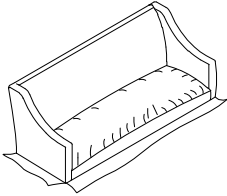
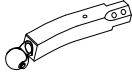
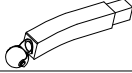
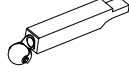
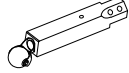
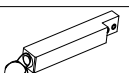
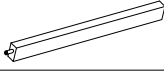
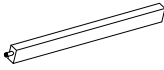


ASSEMBLY INSTRUCTIONS

MODEL # : 338- 517 SLIP COVERED SETTEE (V#12600HMVY)

NOTE: KEEP THIS DOCUMENT FOR REFERENCE IN CASE PARTS ARE NEEDED
DO NOT TIGHTEN SCREWS UNTIL COMPLETELY ASSEMBLED!!

UNIT SHOULD BE ASSEMBLED BY TWO OR MORE PEOPLE.

No	PART LIST		Q'TY
A		CHAIR SEAT	1PC
B		BACK LEG (R)	1PC
C		BACK LEG (L)	1PC
D		FRONT LEG (R)	1PC
E		FRONT LEG (L)	1PC
F		MIDDLE LEG	1PC
G		SIDE STRETCHER (R)	1PC
H		SIDE STRETCHER (L)	1PC

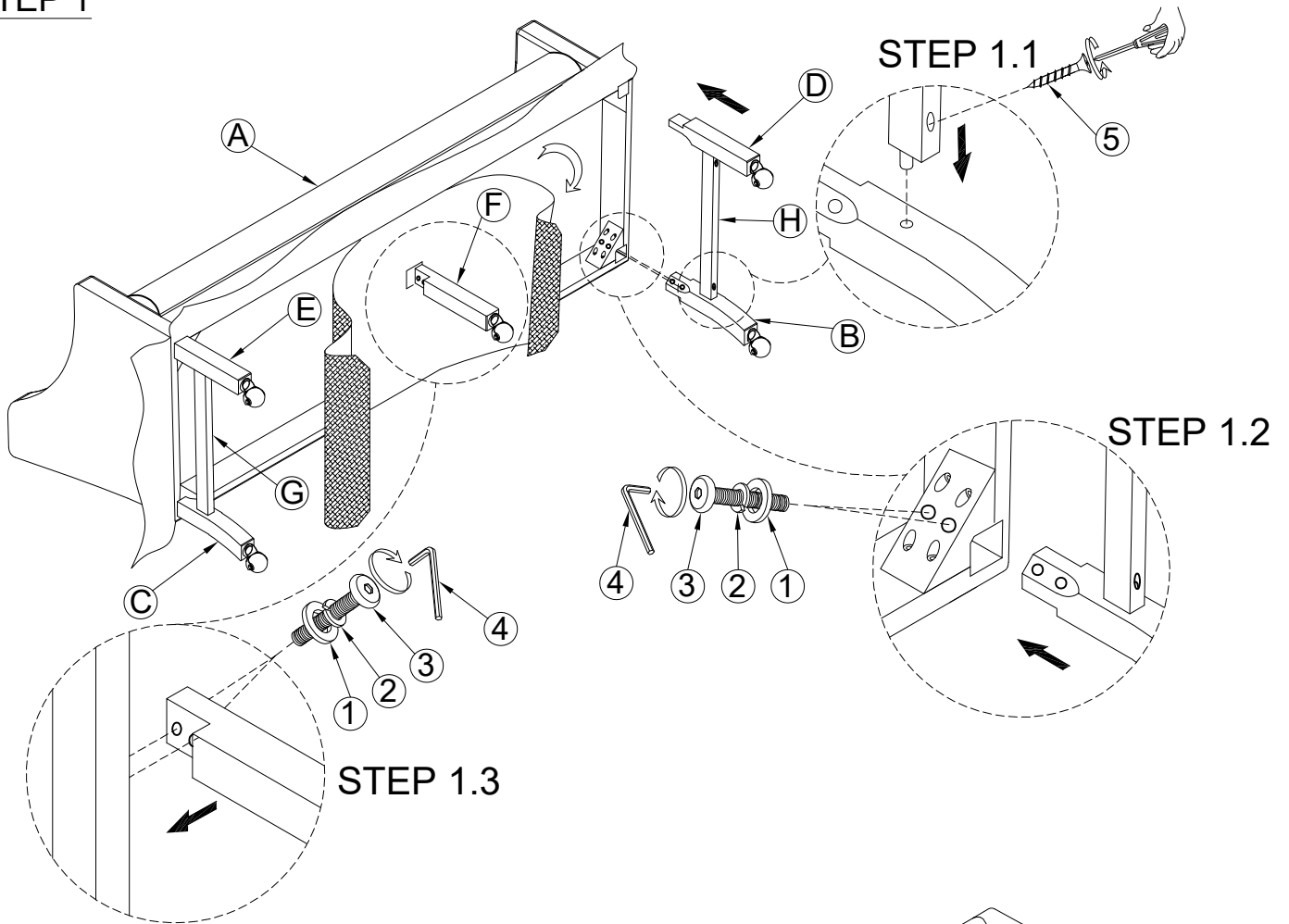
No	HARDWARE LIST		Q'TY
1		FLAT WASHER	10PCS
2		LOCK WASHER	10PCS
3		ALLEN BOLT	10PCS
4		ALLEN KEY	1PC
5		SCREW	4PCS

ASSEMBLY INSTRUCTIONS

MODEL # : 338- 517 SLIP COVERED SETTEE (V#12600HMVY)

NOTE: KEEP THIS DOCUMENT FOR REFERENCE IN CASE PARTS ARE NEEDED
DO NOT TIGHTEN SCREWS UNTIL COMPLETELY ASSEMBLED!!
UNIT SHOULD BE ASSEMBLED BY TWO OR MORE PEOPLE.

STEP 1



COMPLETED

