

ASSEMBLY INSTRUCTION

13906 LESIA HEADBOARD QUEEN

Read instructions carefully. See furniture and hardware part list on the right for guidance.






Have all parts ready before assembly. Place all wooden furniture parts on a clean and flat soft surface to prevent scratching.

Before you start, here are some words of caution:

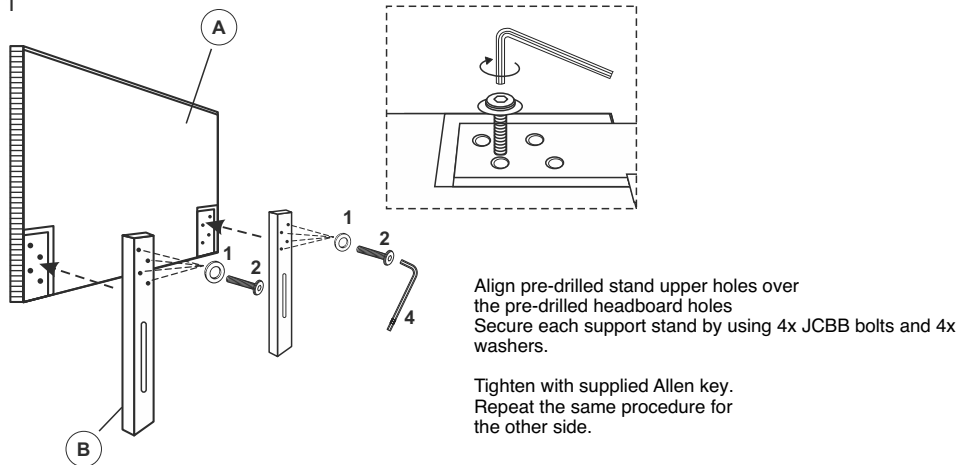
1. Do not FULLY – TIGHTEN nuts and bolts until all nuts and bolts are partially tightened.
 2. Do not FULLY – TIGHTEN nuts and bolts to avoid causing damage to the threading.
- Keep all hardware parts out of reach of children

NOTE: THE LIST AND QUANTITY SHOWN ARE FOR 1 UNIT ASSEMBLY.

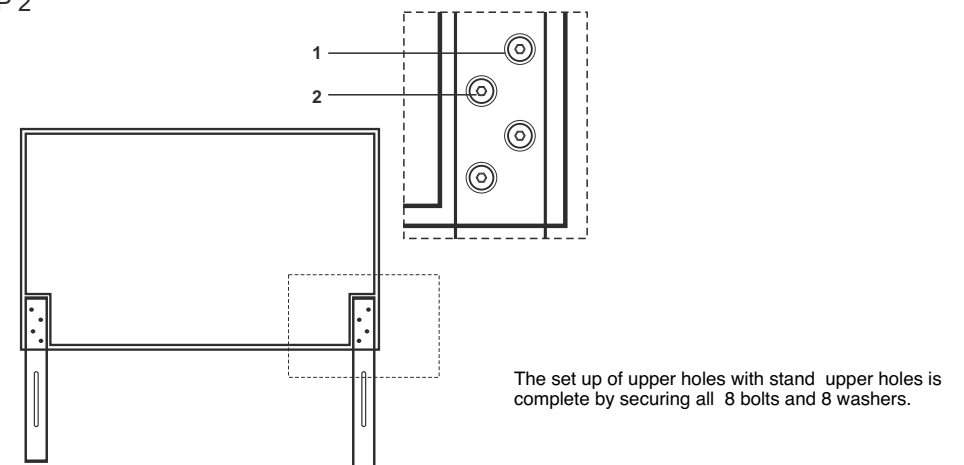
FURNITURE PART LIST		
ITEM	DESCRIPTION	QTY
A	HEADBOARD	1
B	SUPPORT BOARD	1

HARDWARE PART LIST		
ITEM	DESCRIPTION	QTY
1	M8 FLAT WASHER 	8 PCS
2	JCBB BOLT M8 x 40mm 	8 PCS
3	M8 FLAT WASHER 	2 PCS
4	JCBB BOLT M8 x 60mm 	2 PCS
5	M5 ALLEN KEY (BALL SHAPE) 	1 PC

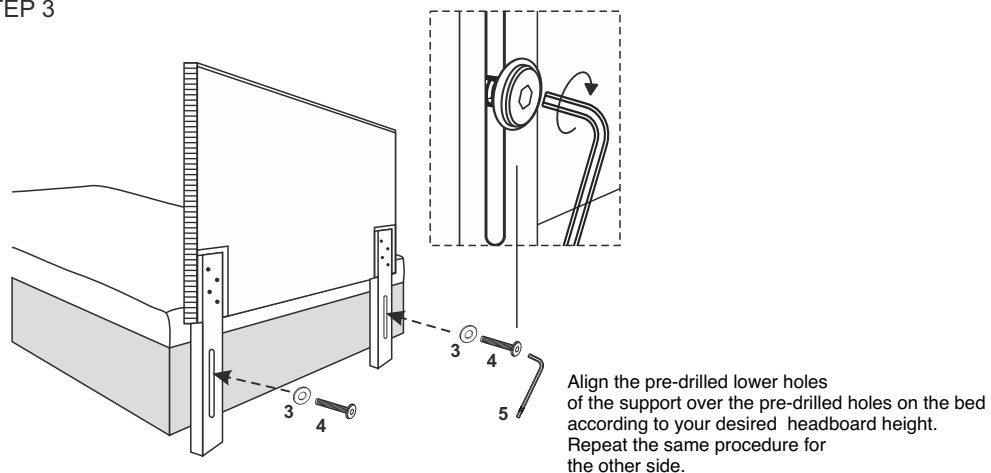
STEP 1



STEP 2



STEP 3



STEP 4

