

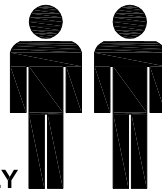
MODEL NAME:

ET 5512-00

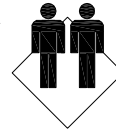
1.5hr

APPROXIMATE ASSEMBLY TIME

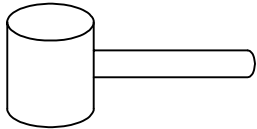
2 PEOPLE FOR ASSEMBLY



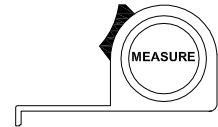
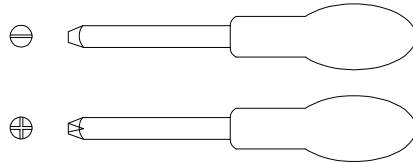
**FLOOR AREA
2.0M X 2.0M**



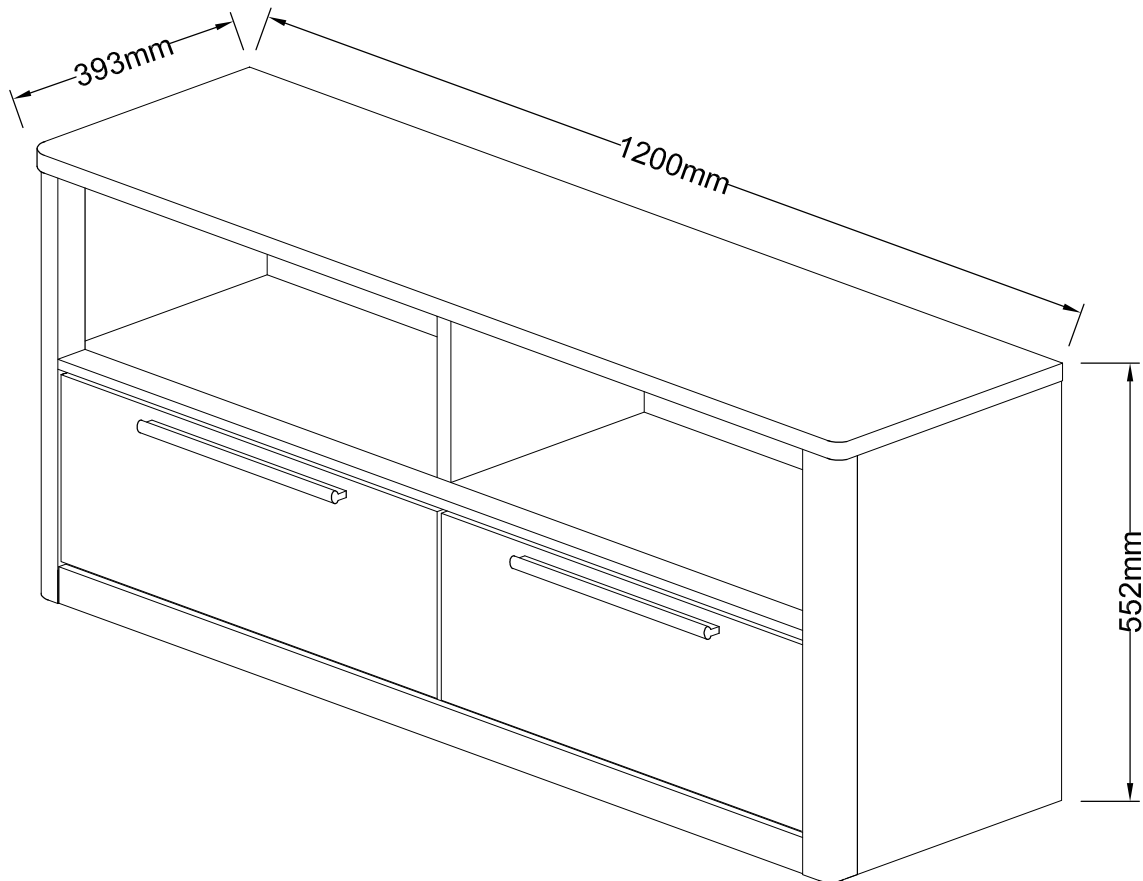
REQUIRED ASSEMBLY SPACE



REQUIRED ASSEMBLY TOOLS



ASSEMBLED DIMENSIONS



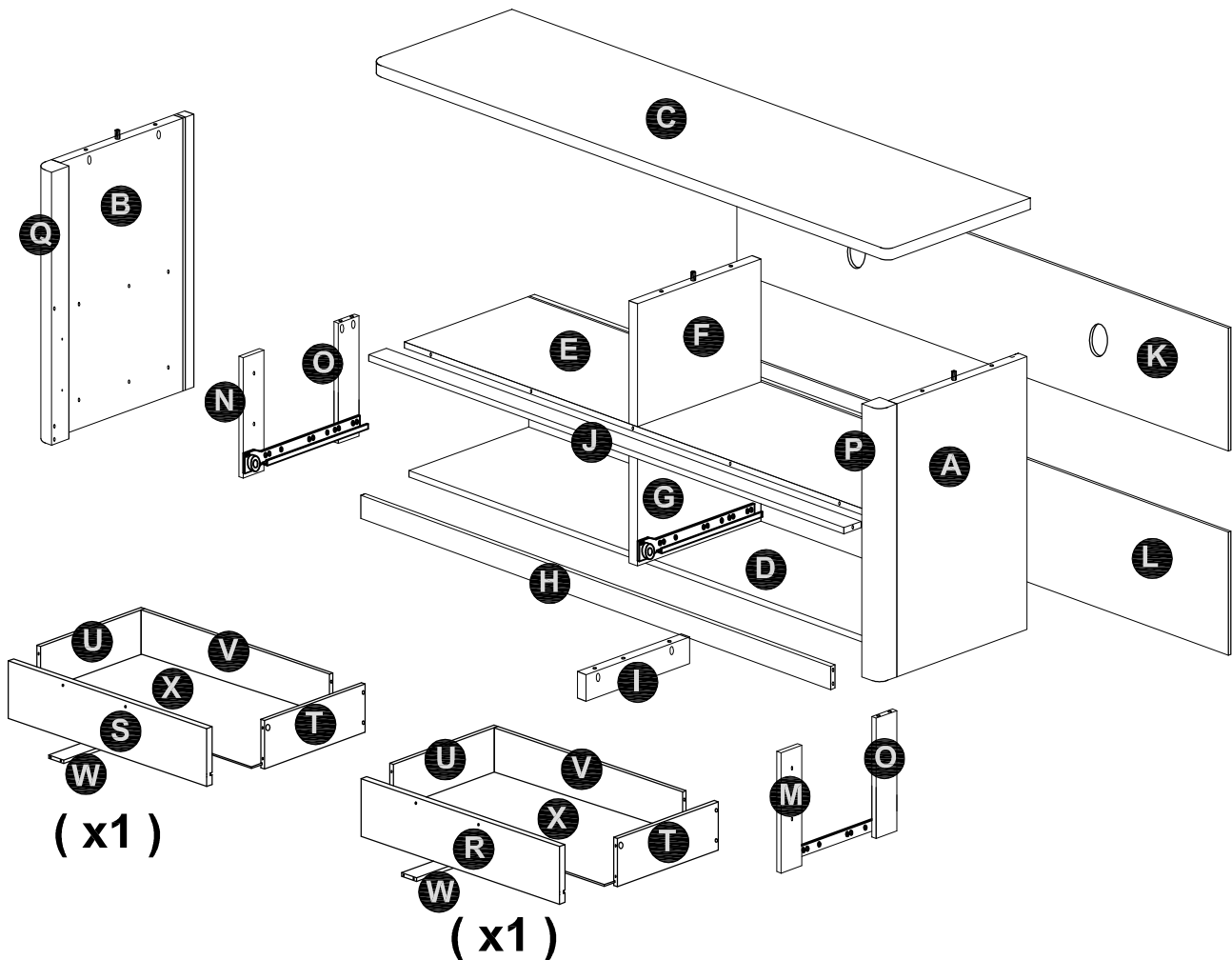
NOTE : THE MAXIMUM WEIGHT THIS PRODUCT CAN HOLD UP TO IS 25 KGS.

MODEL NAME:

ET 5512-00

NO.	PART LIST	QTY	NO.	PART LIST	QTY
(A)	RIGHT SIDE PANEL	1	(M)	FRONT DRAWER SUPPORT -RIGHT	1
(B)	LEFT SIDE PANEL	1	(N)	FRONT DRAWER SUPPORT -LEFT	1
(C)	TOP PANEL	1	(O)	BACK DRAWER SUPPORT	2
(D)	BOTTOM PANEL	1	(P)	PROFILE LEG (RIGHT)	1
(E)	CENTRE PANEL	1	(Q)	PROFILE LEG (LEFT)	1
(F)	CENTRE DIVIDER TOP	1	(R)	DRAWER FRONT(RIGHT)	1
(G)	CENTRE DIVIDER BOTTOM	1	(S)	DRAWER FRONT(LEFT)	1
(H)	CROSSBAR	1	(T)	DRAWER SIDE (RIGHT)	2
(I)	BOTTOM SUPPORT	1	(U)	DRAWER SIDE (LEFT)	2
(J)	SUPPORT PANEL	1	(V)	DRAWER BACK PANEL	2
(K)	BACK PANEL -A	1	(W)	DRAWER BASE SUPPORT	2
(L)	BACK PANEL -B	1	(X)	DRAWER BASE	2

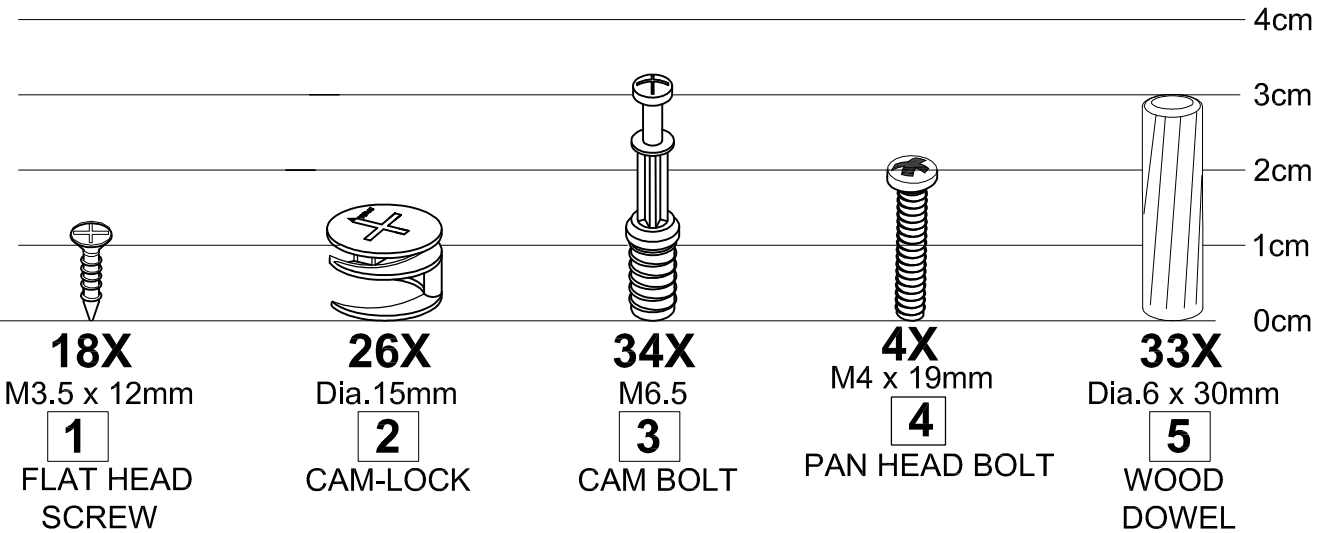
PARTS LIST



MODEL NAME:

ET 5512-00

HARDWARE LIST



4cm
3cm
2cm
1cm
0cm

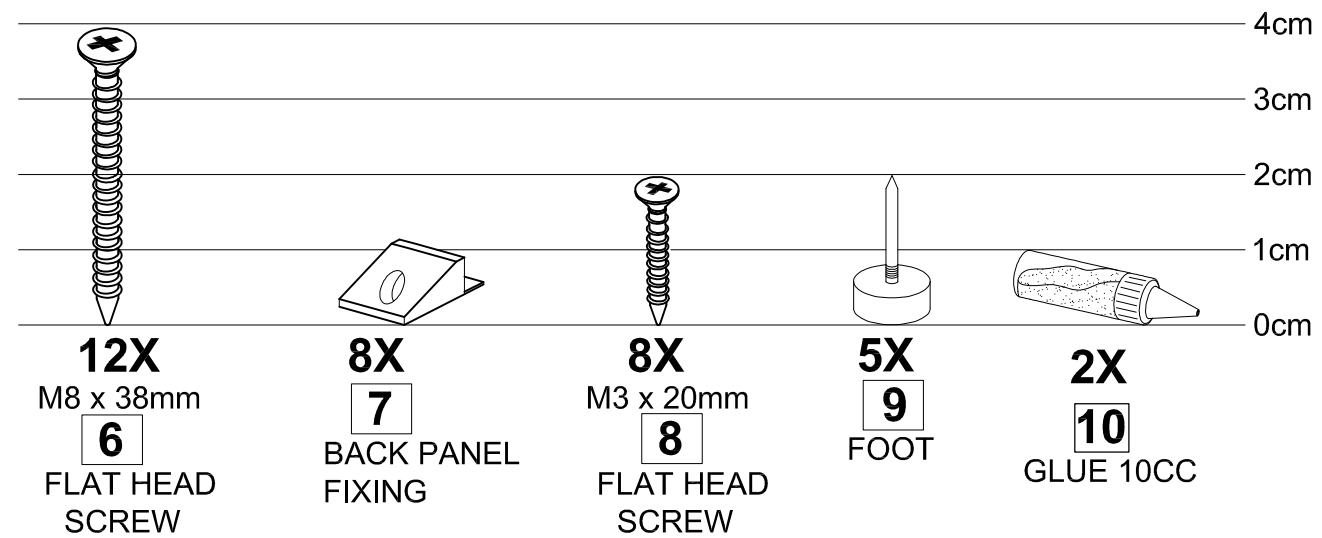
18X
M3.5 x 12mm
1
FLAT HEAD SCREW

26X
Dia.15mm
2
CAM-LOCK

34X
M6.5
3
CAM BOLT

4X
M4 x 19mm
4
PAN HEAD BOLT

33X
Dia.6 x 30mm
5
WOOD DOWEL



4cm
3cm
2cm
1cm
0cm

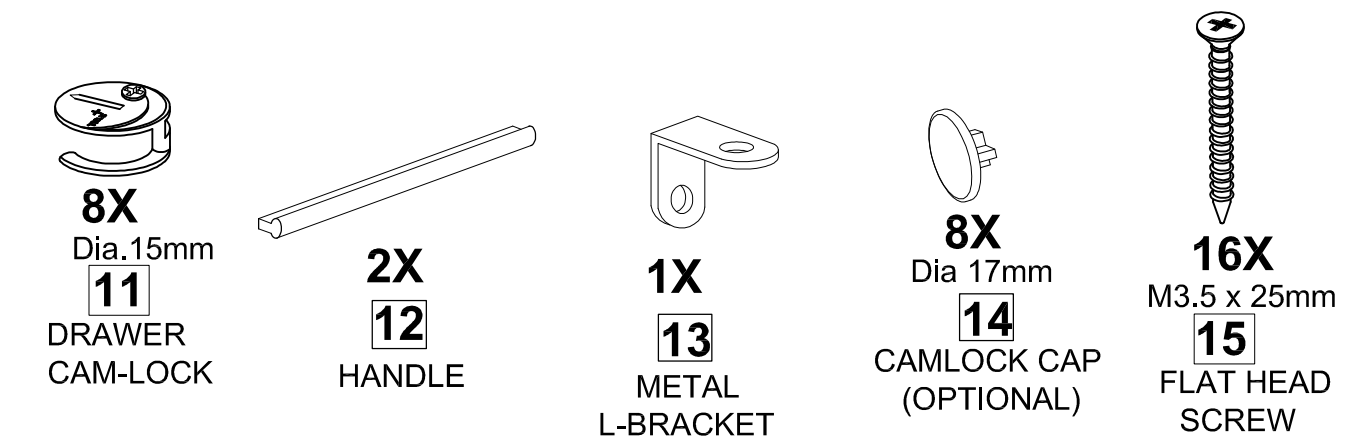
12X
M8 x 38mm
6
FLAT HEAD SCREW

8X
7
BACK PANEL FIXING

8X
M3 x 20mm
8
FLAT HEAD SCREW

5X
9
FOOT

2X
10
GLUE 10CC



8X
Dia.15mm
11
DRAWER CAM-LOCK

2X
12
HANDLE

1X
13
METAL L-BRACKET

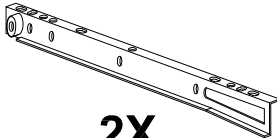
8X
Dia 17mm
14
CAMLOCK CAP (OPTIONAL)

16X
M3.5 x 25mm
15
FLAT HEAD SCREW

MODEL NAME:

ET 5512-00

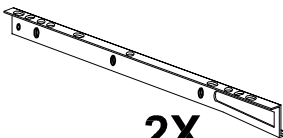
HARDWARE LIST



2X

16

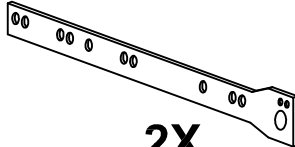
DRAWER RUNNER
(RIGHT)



2X

17

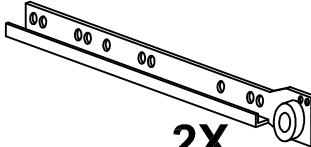
DRAWER RUNNER
(LEFT)



2X

18

DRAWER RUNNER
(LEFT)



2X

19

DRAWER RUNNER
(RIGHT)



4X

M3.5 x 12mm

20

FLAT HEAD SCREW

MODEL NAME:

ET 5512-00

Top Tips before you start!

1. Please check that all parts are present before you start the assembly of your furniture.
2. For ease and speed of assembly, we recommend that before you commence each step of the assembly, that you identify all the parts required for that step.
3. For larger items, please ensure that you have sufficient space and people (as indicated on page 1) to assemble your product safely
4. We recommend that, where possible, all items are assembled near to the area in which they will be placed in use, to avoid moving the product unnecessarily once assembled.
5. For the protection of your furniture, particularly items of high gloss finish, we recommend that the product is placed on a protected surface during assembly to prevent any damage.
6. Caution - Electric / Battery operated screw driver NOT RECOMMENDED.
7. During assembly please take care not to over-tighten any fittings, as this may damage the product.
8. Always place the product on a flat, steady and stable surface.
9. Do not sit or stand on the product.
Do not use the product as a stepladder.
10. This product is intended for indoor, household use only as it is non industrial product.
11. This product is constructed from re-inforced hollow board. Excessive pressure cause irreparable damage. Please do not kneel on any part of this product during assembly.

Care and Maintenance of your Furniture

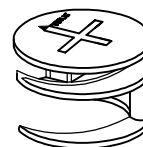
- Please periodically check all fittings and re-tighten as necessary.
- To clean your item, please use a damp cloth and wipe clean.
- Never allow any kind of liquid to remain on your furniture.
- Please do not place hot items (e.g. hot drinks) directly on to the wood surface.
- Please do not drag and pull your furniture.

MODEL NAME:

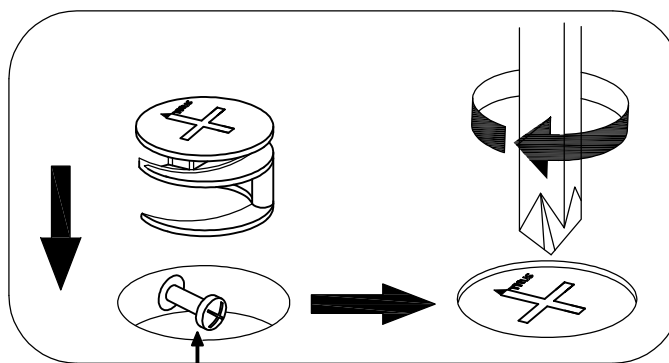
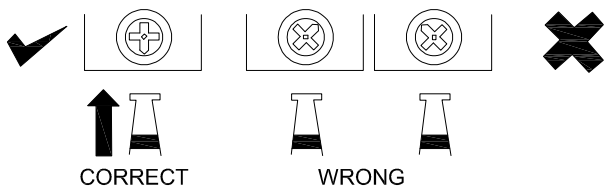
ET 5512-00

SPECIAL TIPS FOR FITTING CAM-LOCKS AND CAM BOLT

CAM-LOCK

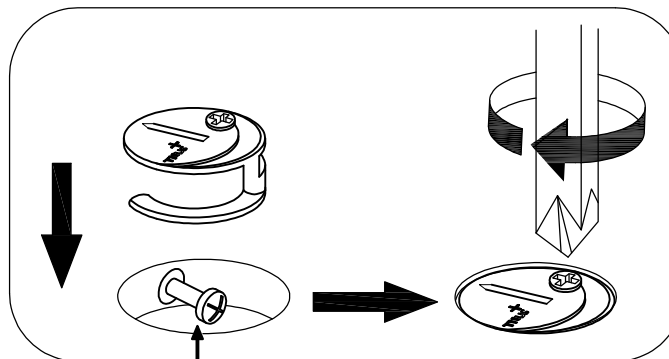


WHEN FITTING CAM-LOCK
ENSURE STARTING POSITION IS CORRECT
BEFORE YOU INSERT CONNECTING CAM BOLT
TURN CLOCKWISE UNTIL SECURE



Cam bolt head needs to be in centre

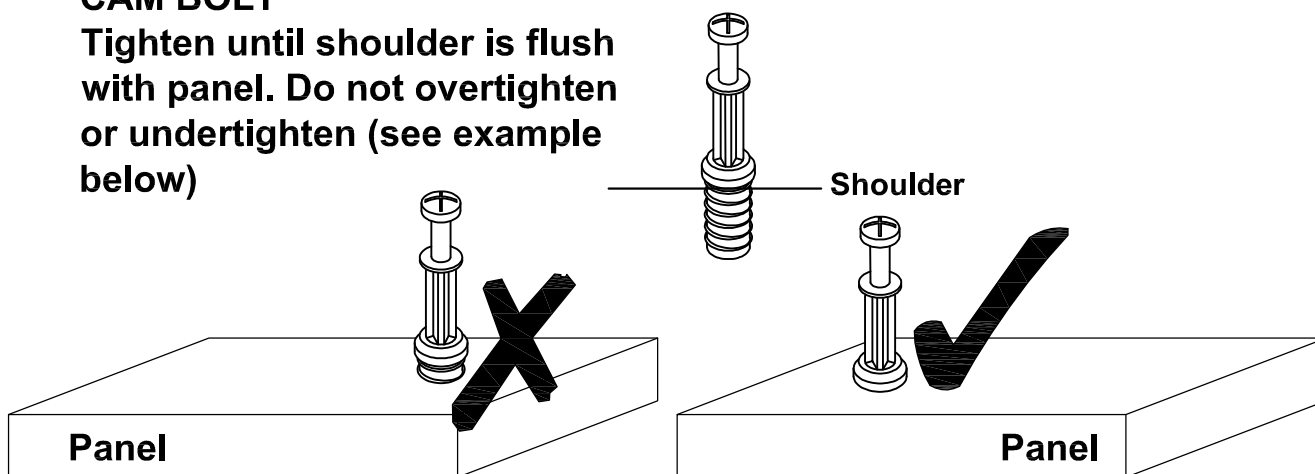
DRAWER
CAM-LOCK



Quickfit head needs to be in centre

CAM BOLT

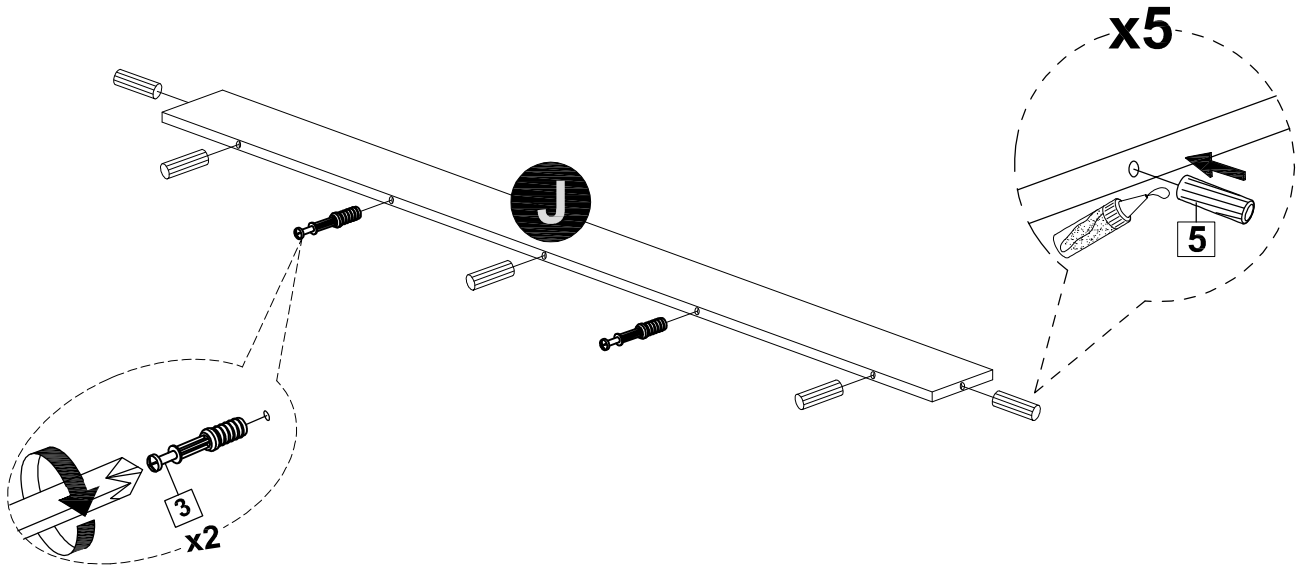
Tighten until shoulder is flush with panel. Do not overtighten or undertighten (see example below)



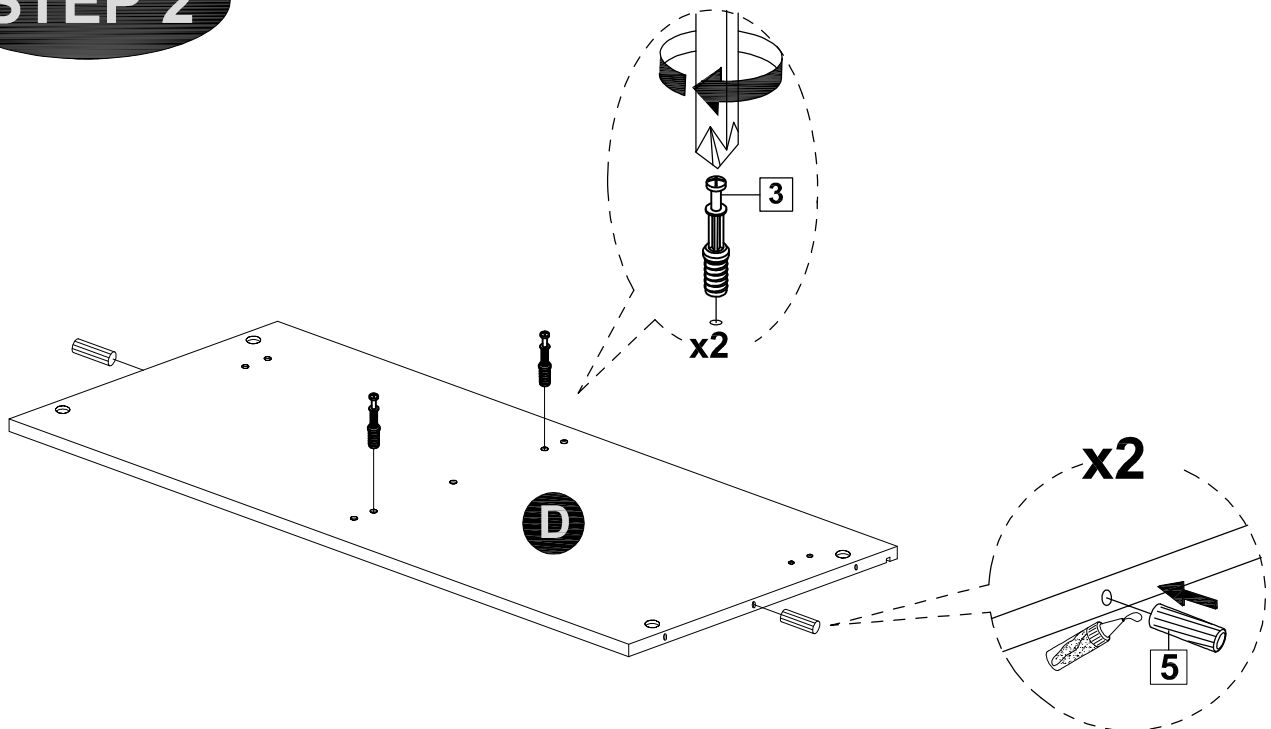
MODEL NAME:

ET 5512-00

STEP 1



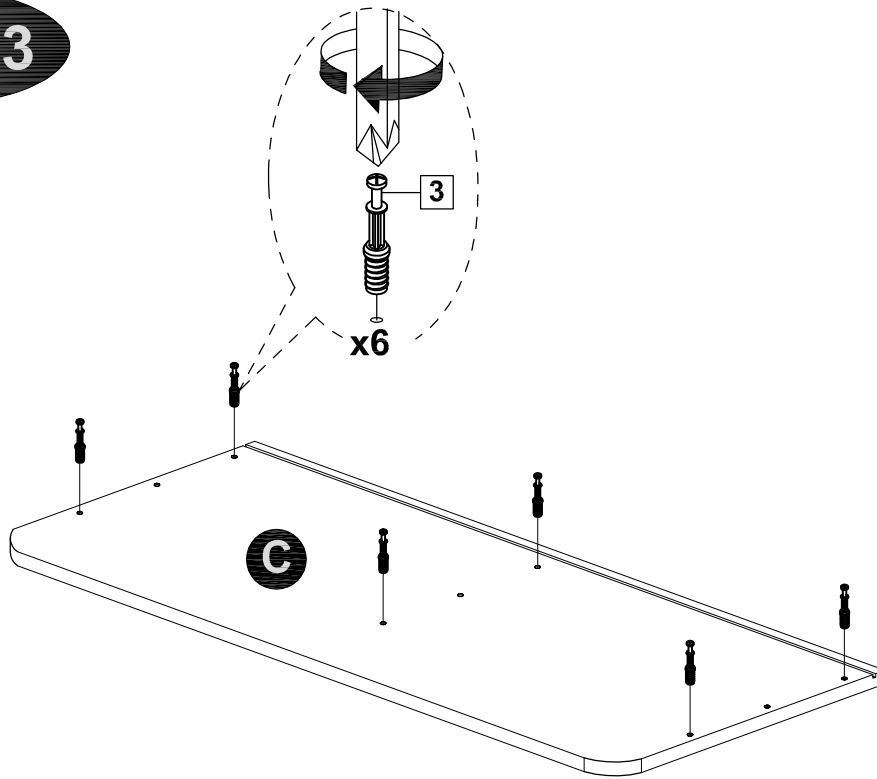
STEP 2



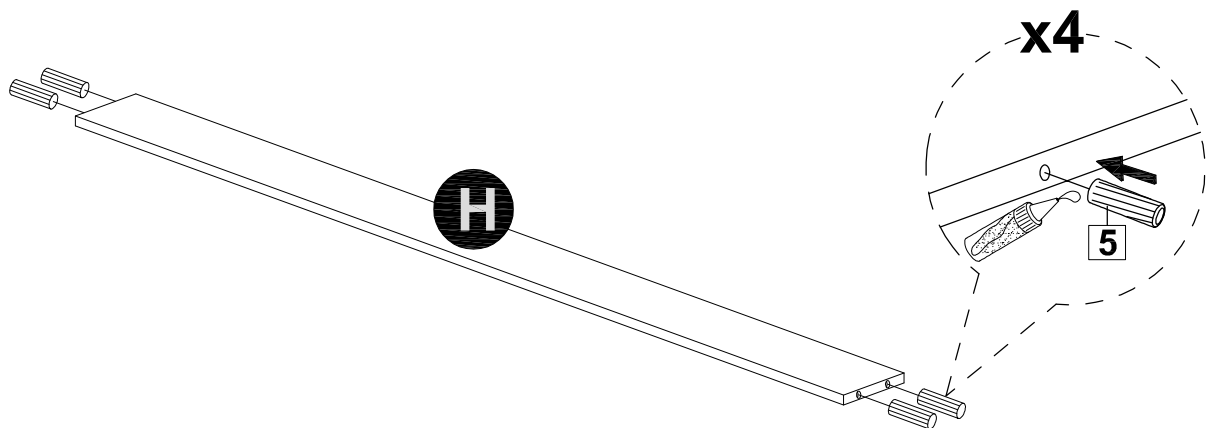
MODEL NAME:

ET 5512-00

STEP 3



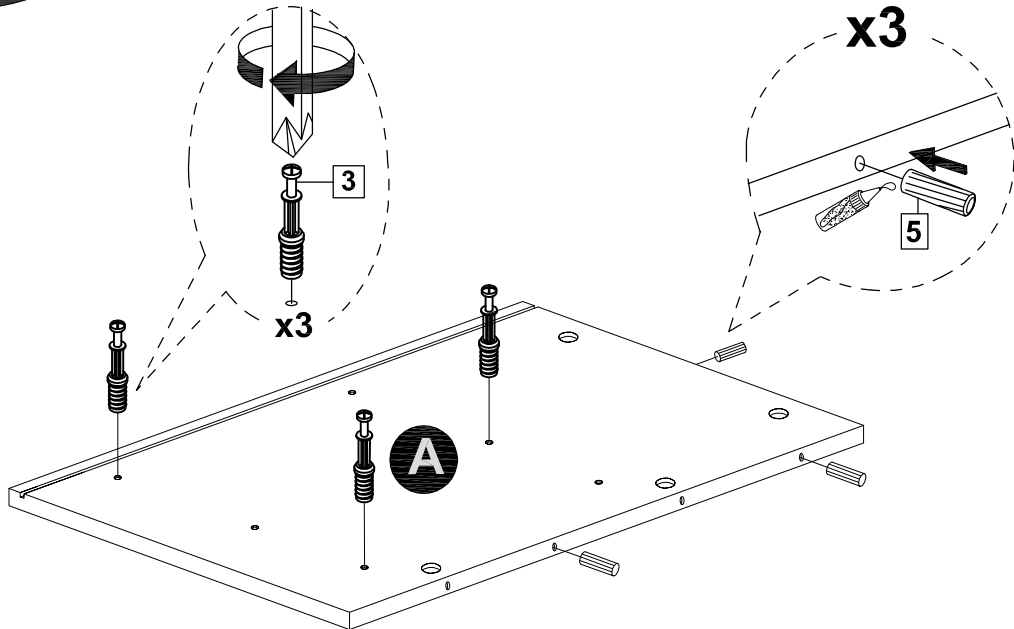
STEP 4



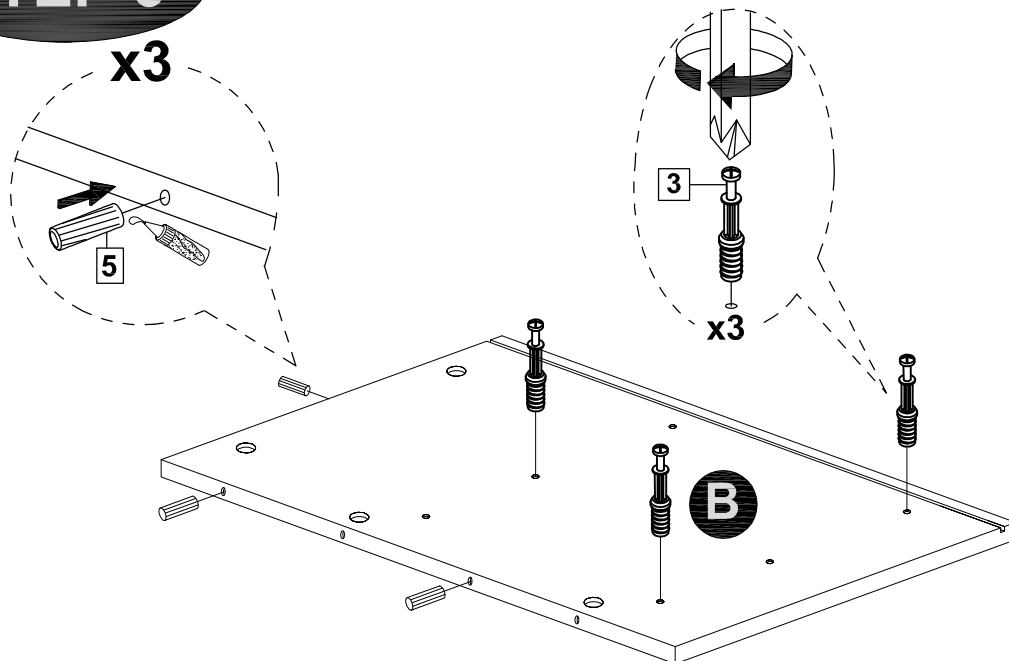
MODEL NAME:

ET 5512-00

STEP 5



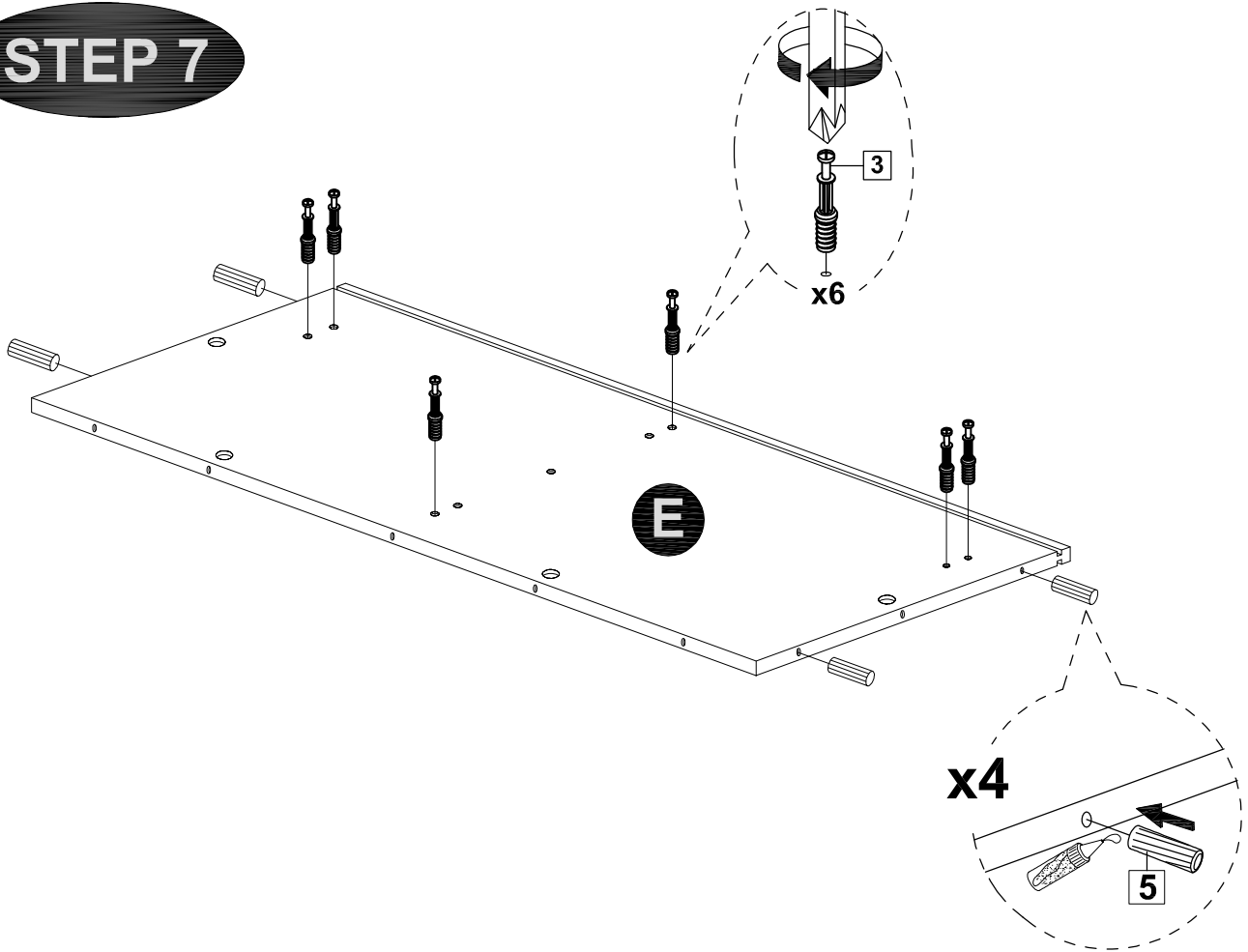
STEP 6



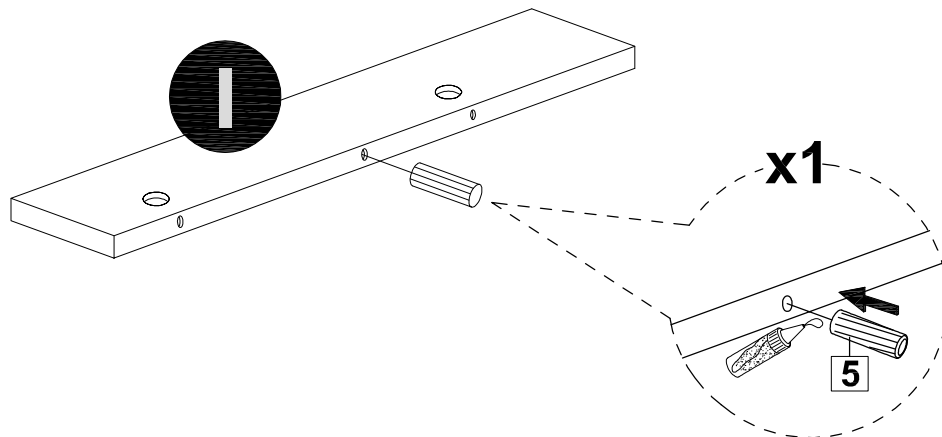
MODEL NAME:

ET 5512-00

STEP 7



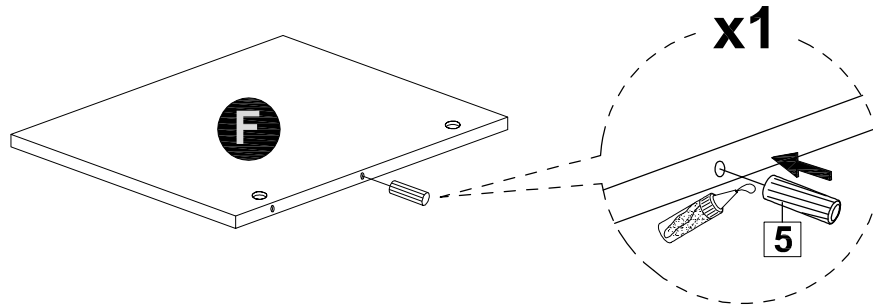
STEP 8



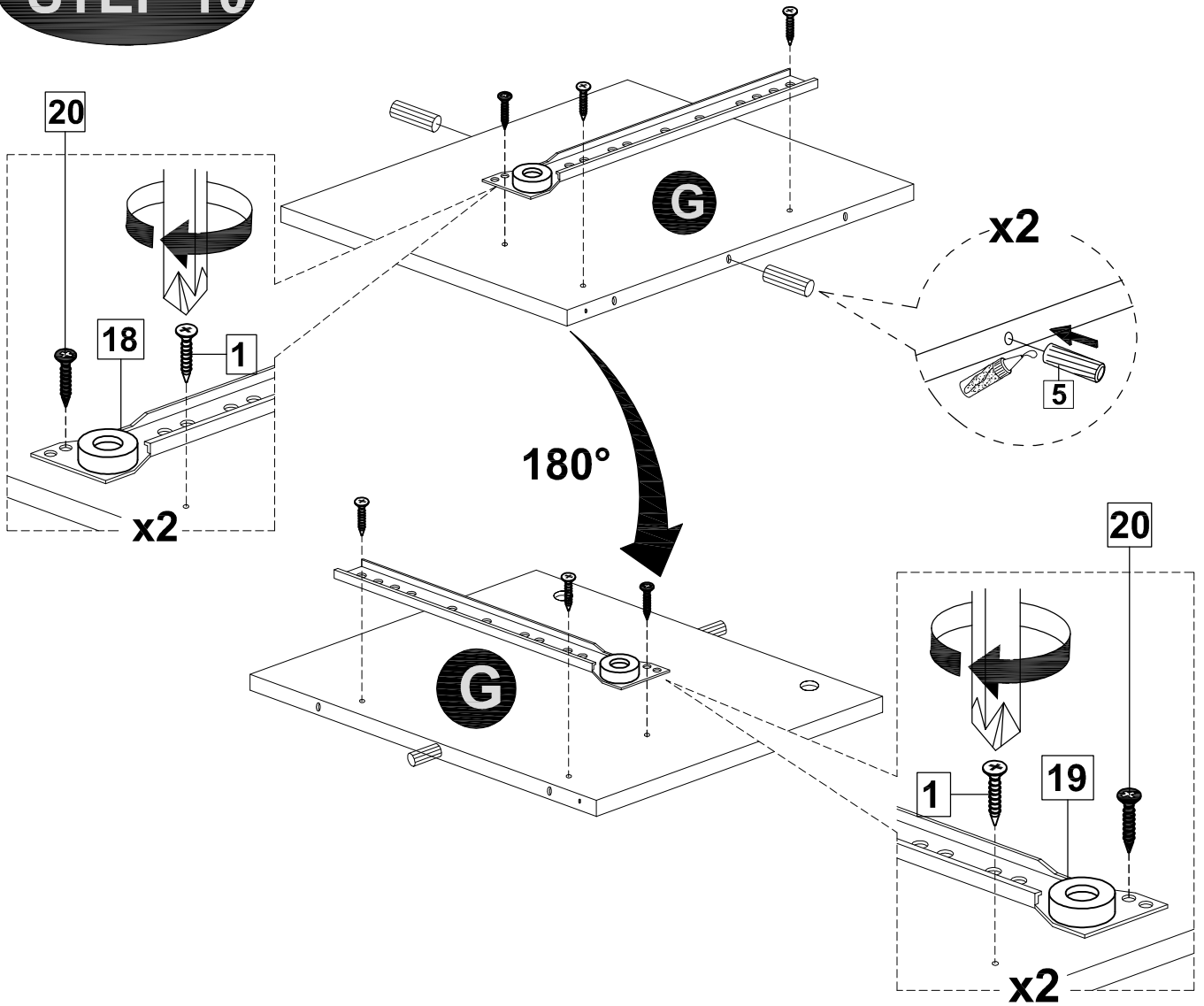
MODEL NAME:

ET 5512-00

STEP 9



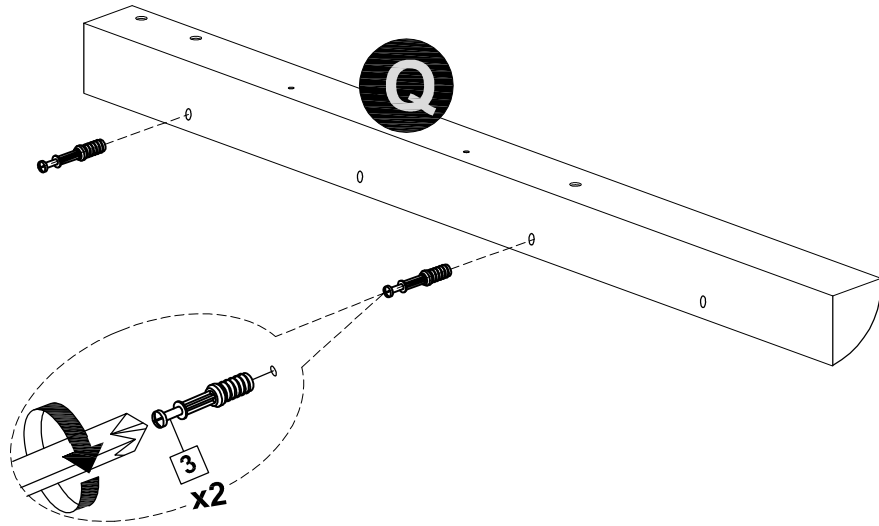
STEP 10



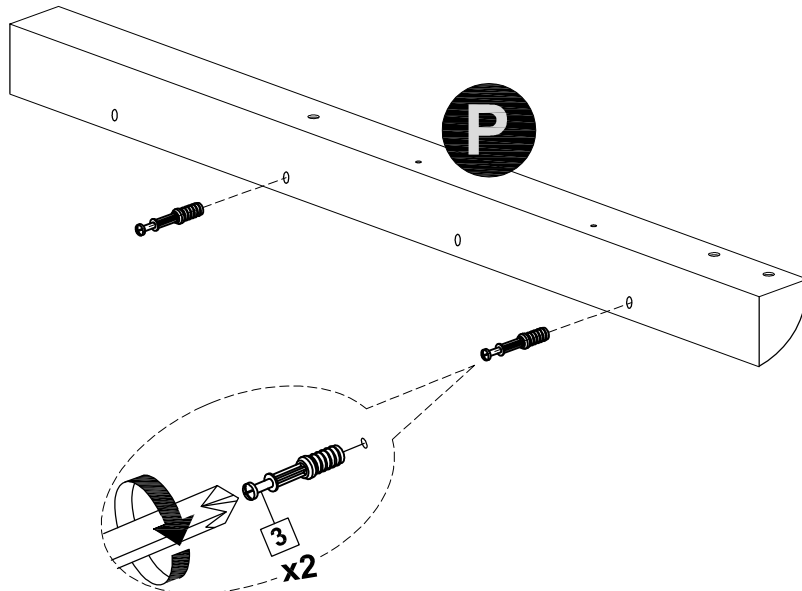
MODEL NAME:

ET 5512-00

STEP 11



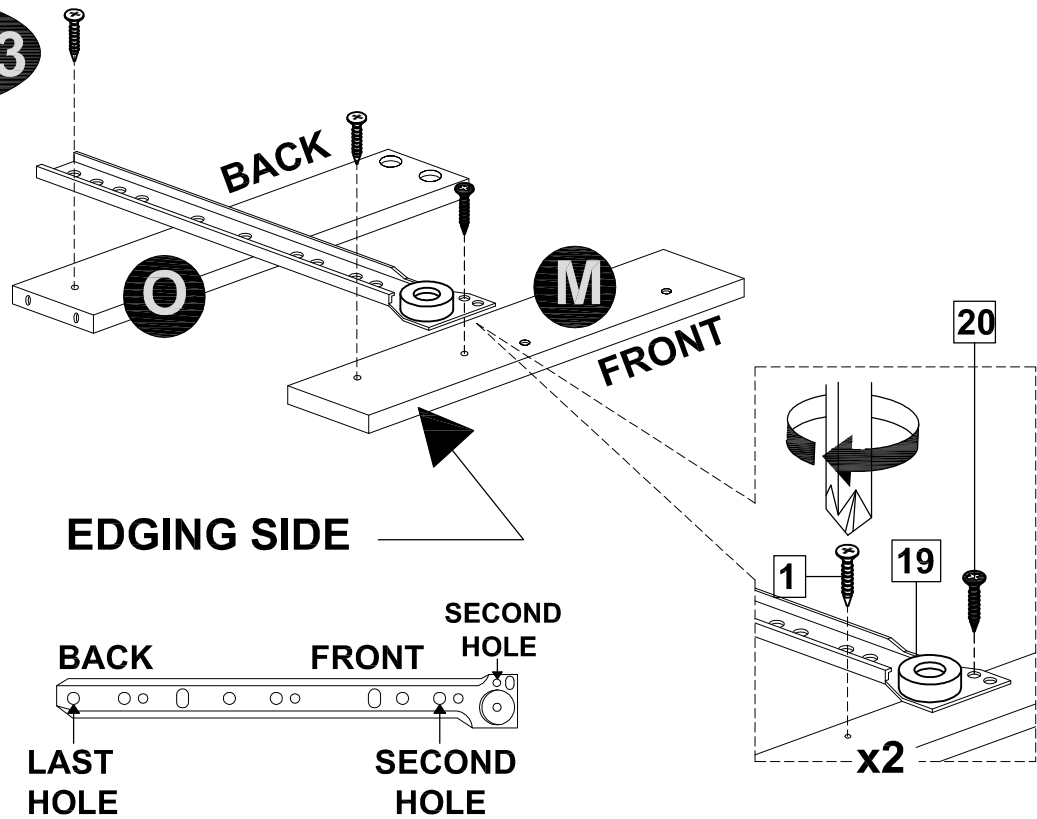
STEP 12



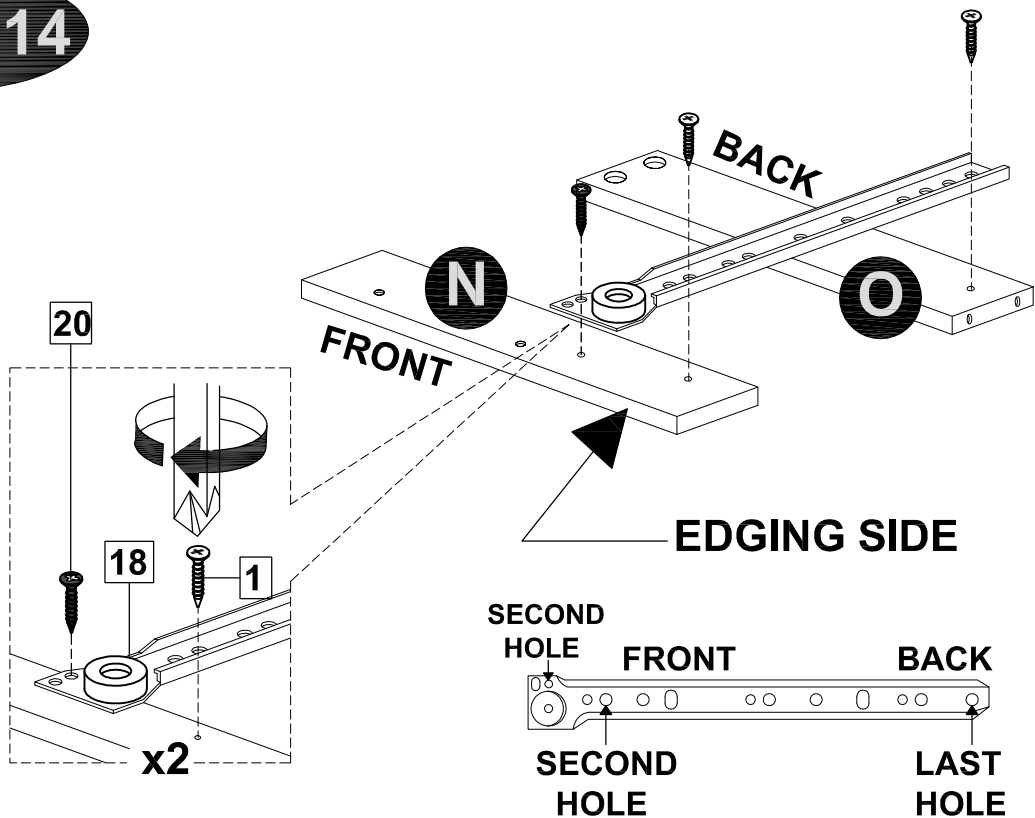
MODEL NAME:

ET 5512-00

STEP 13



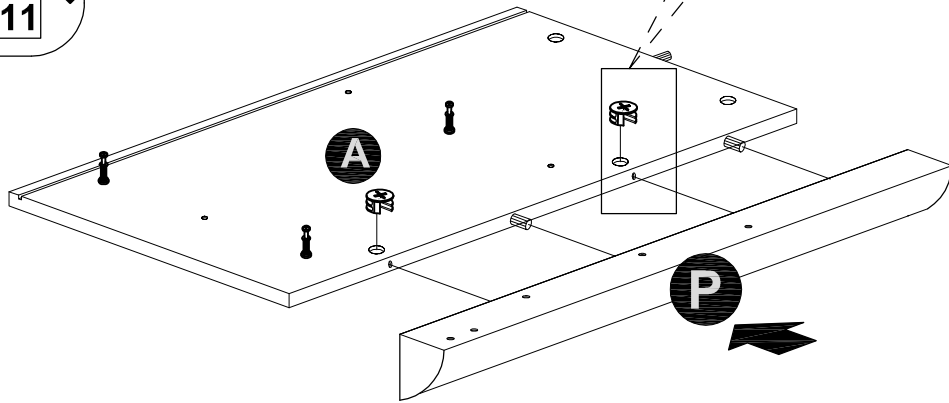
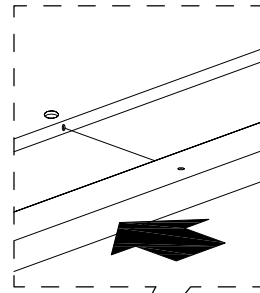
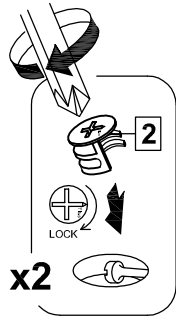
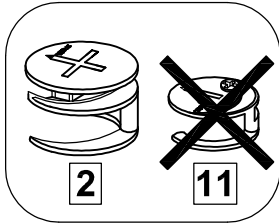
STEP 14



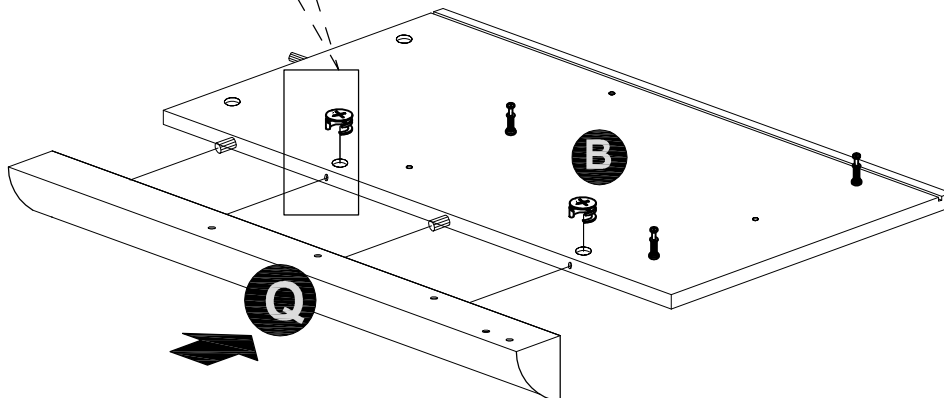
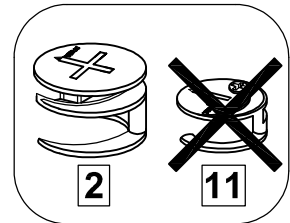
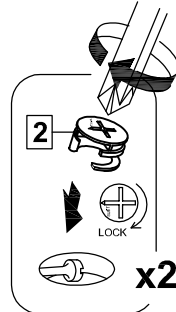
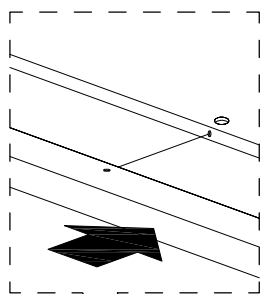
MODEL NAME:

ET 5512-00

STEP 15



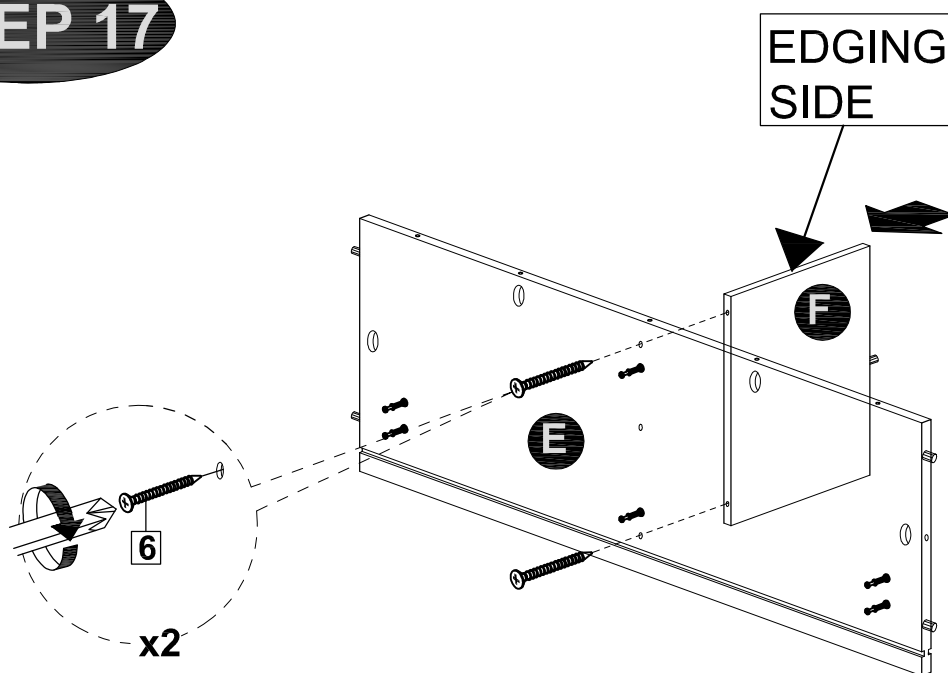
STEP 16



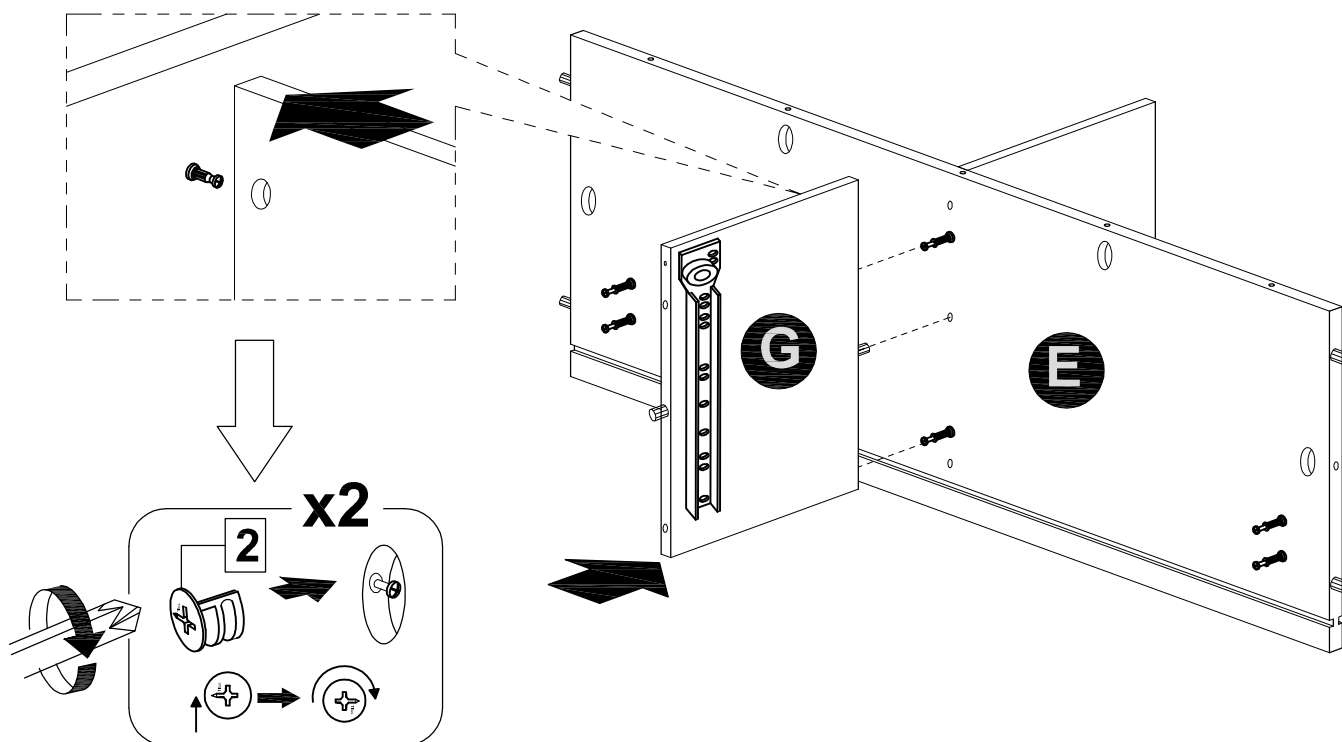
MODEL NAME:

ET 5512-00

STEP 17



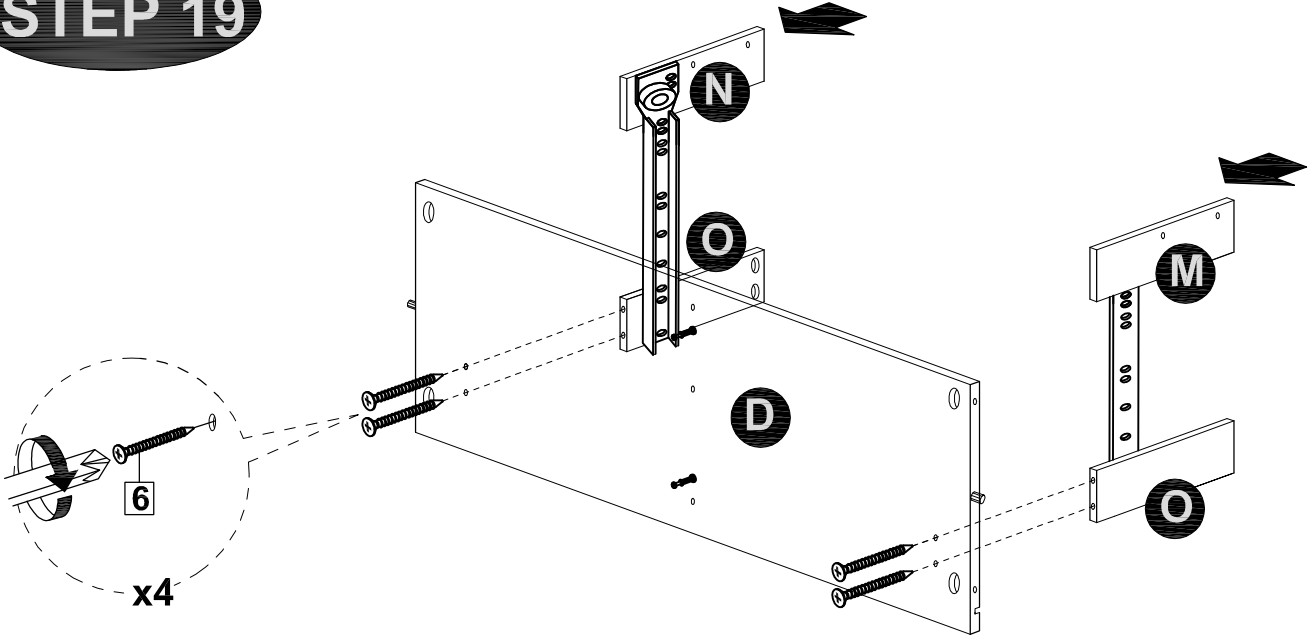
STEP 18



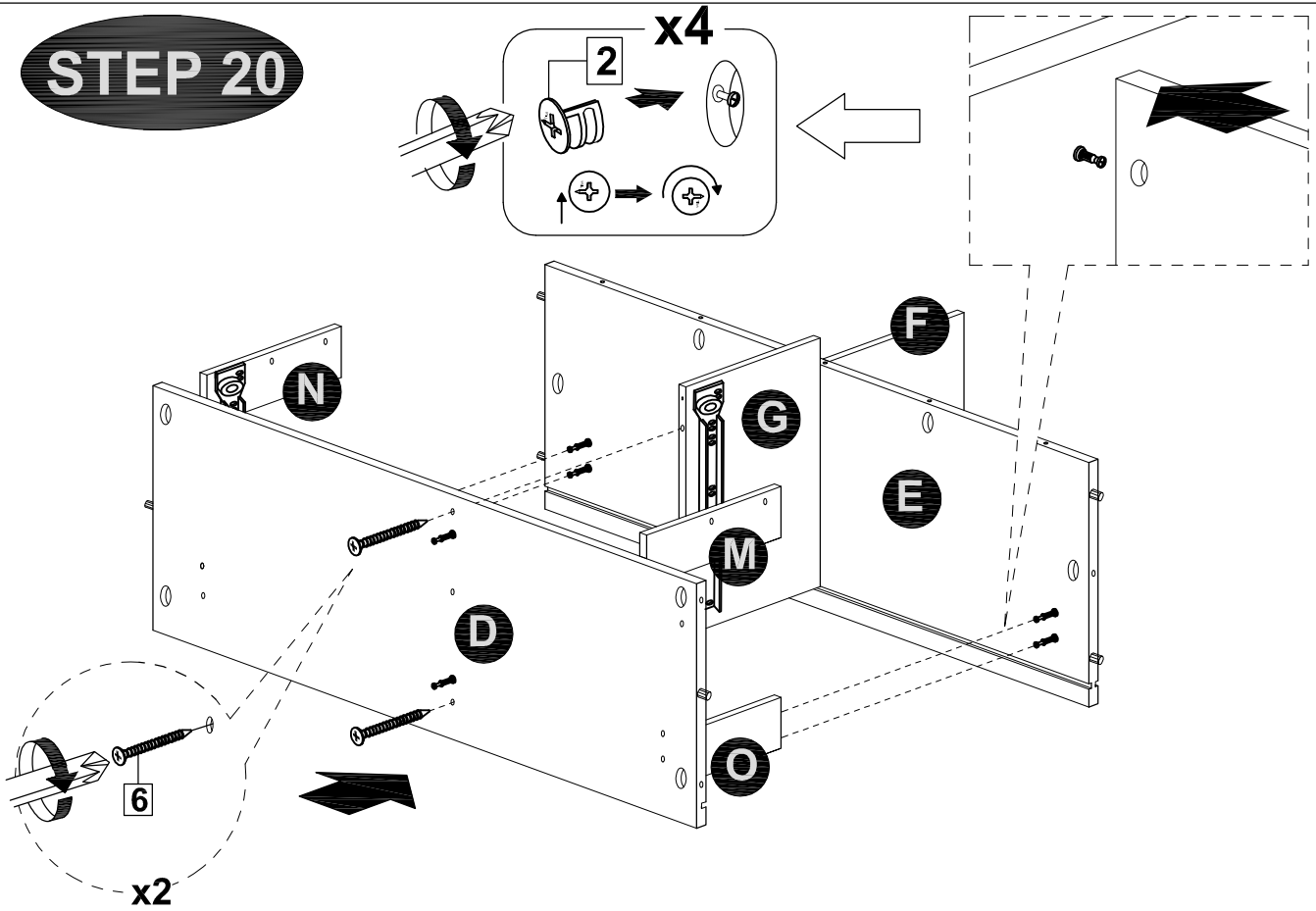
MODEL NAME:

ET 5512-00

STEP 19



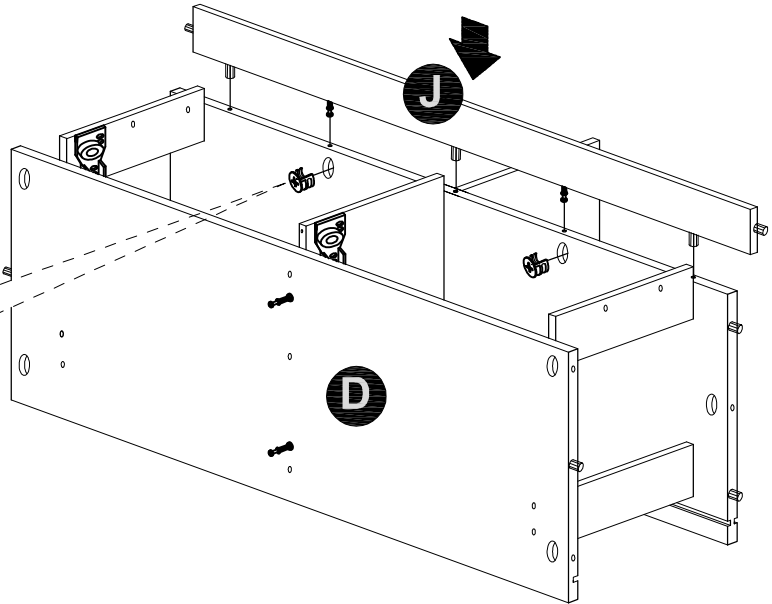
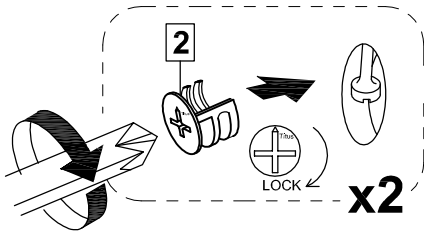
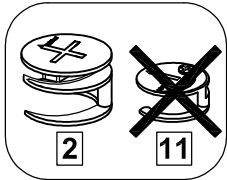
STEP 20



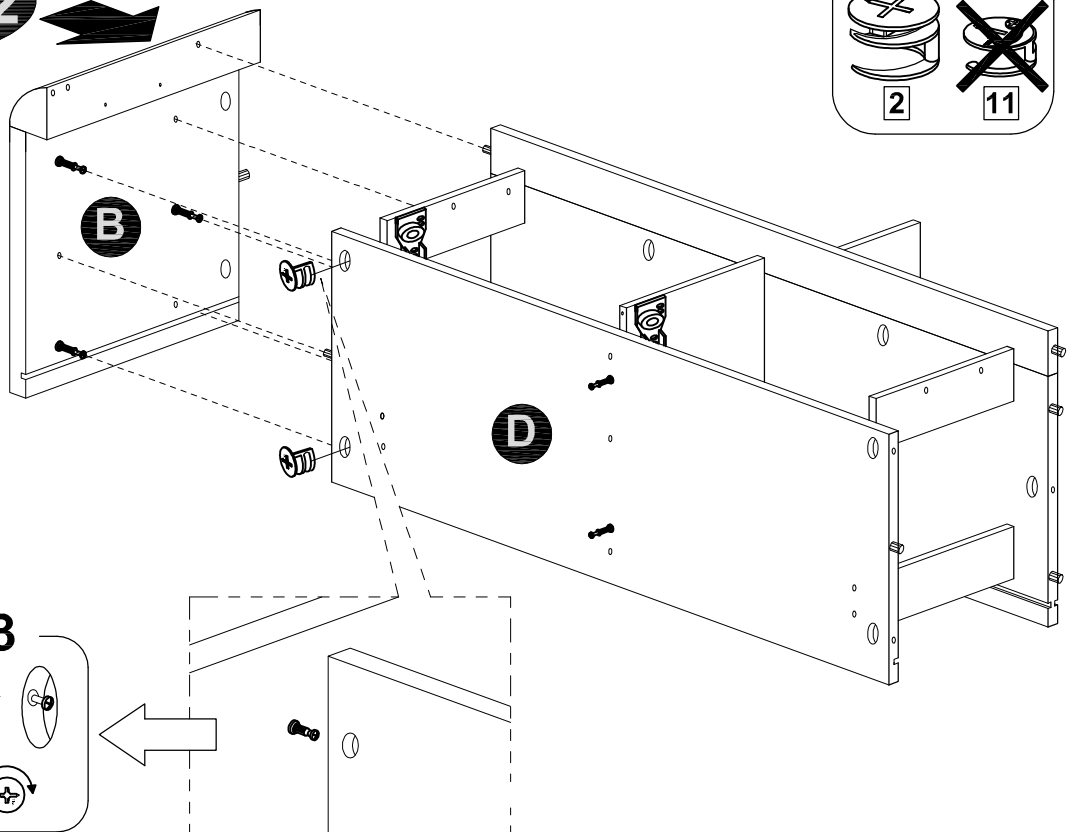
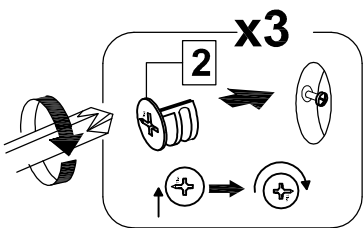
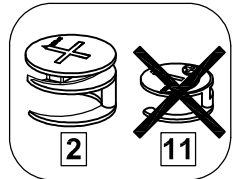
MODEL NAME:

ET 5512-00

STEP 21



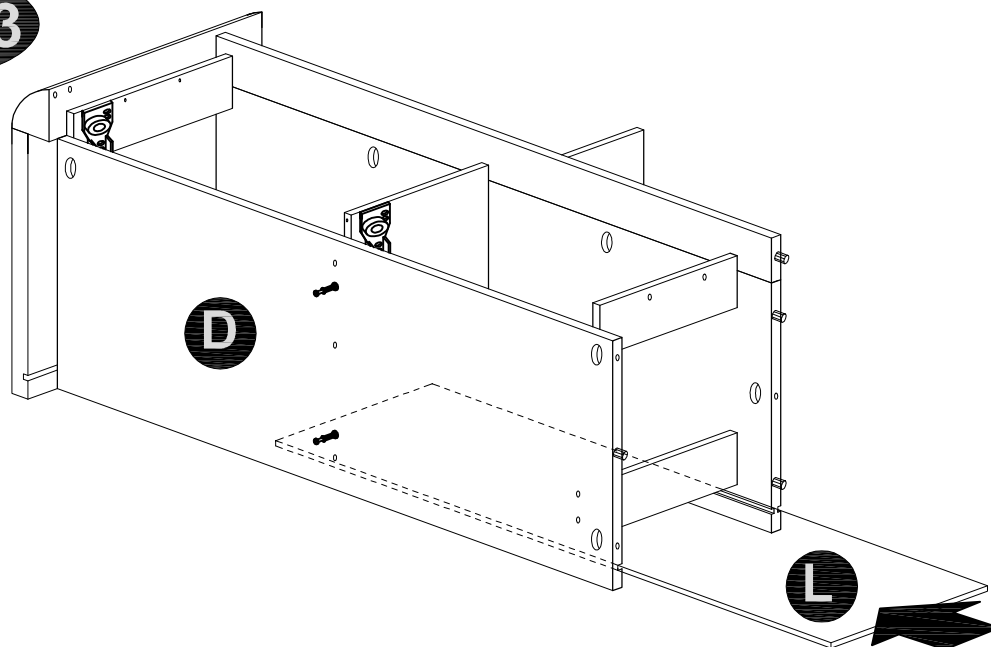
STEP 22



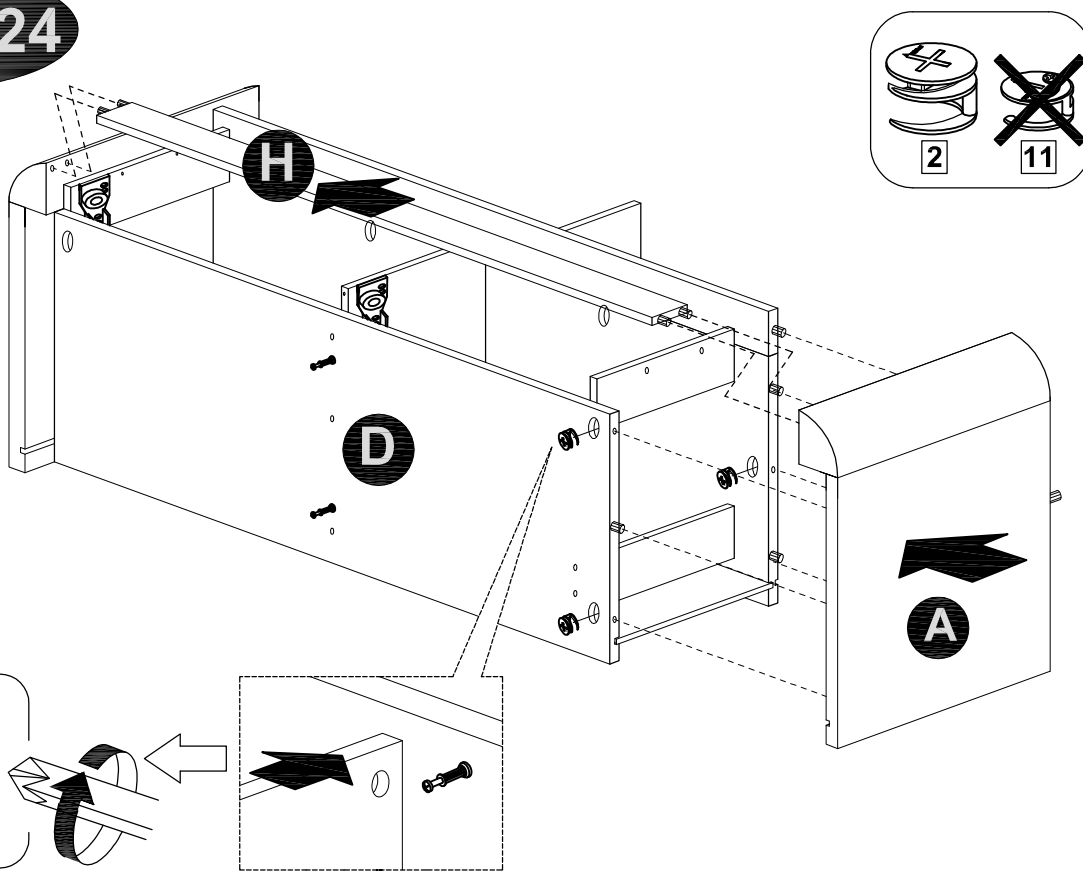
MODEL NAME:

ET 5512-00

STEP 23



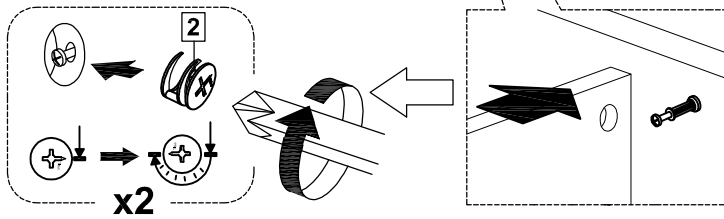
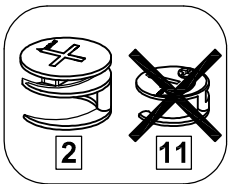
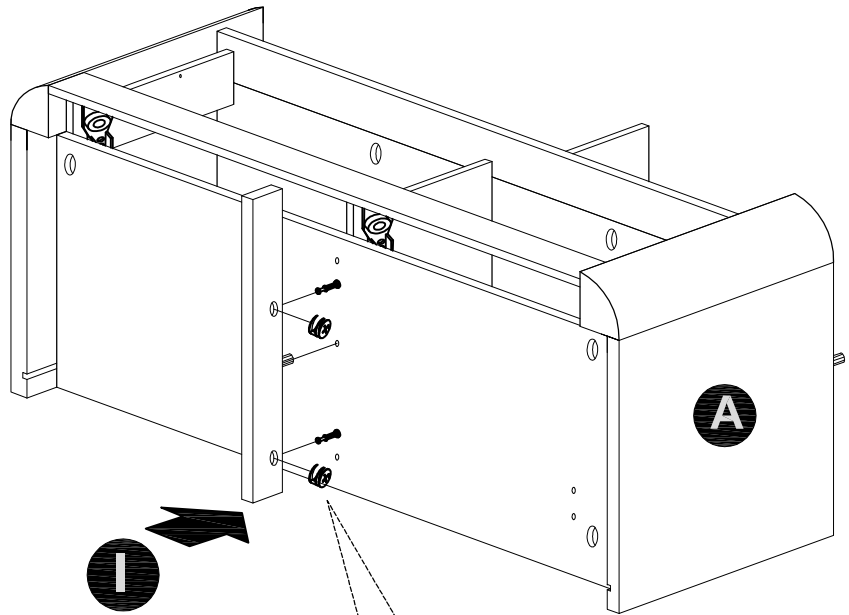
STEP 24



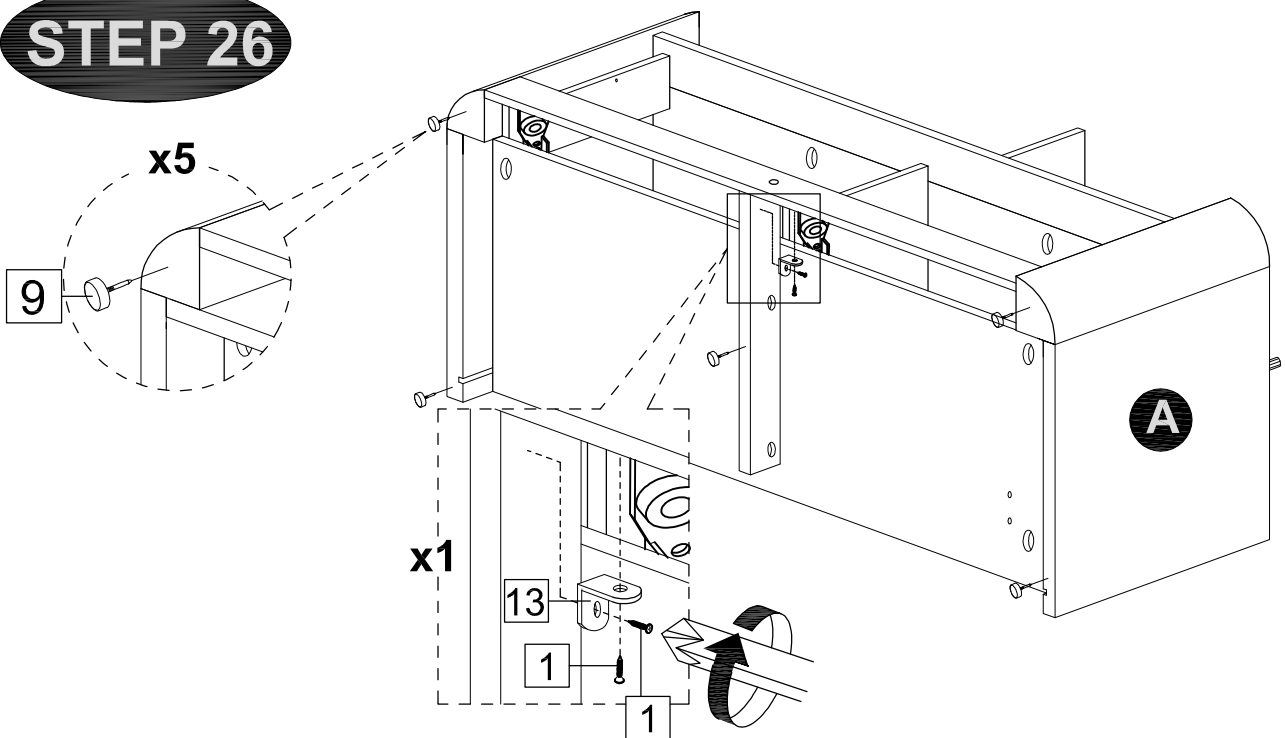
MODEL NAME:

ET 5512-00

STEP 25



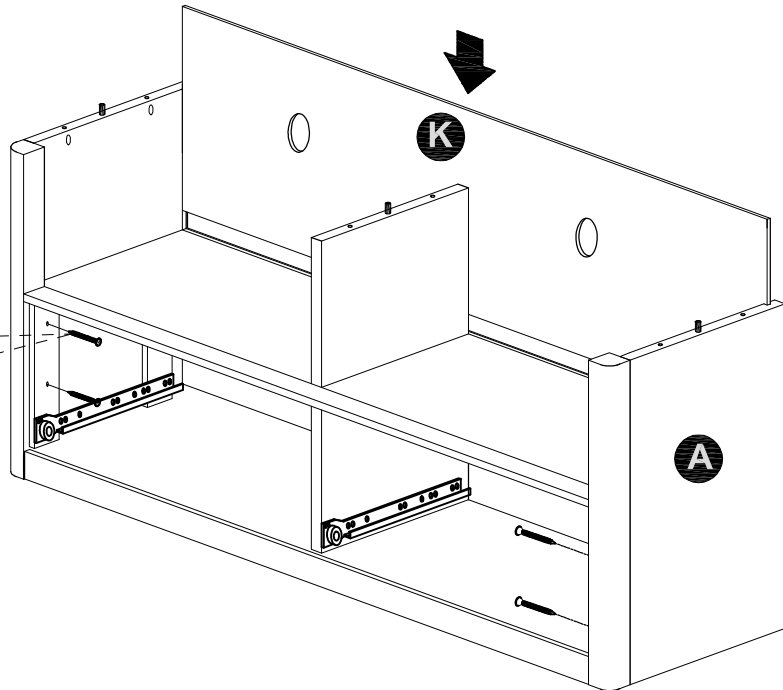
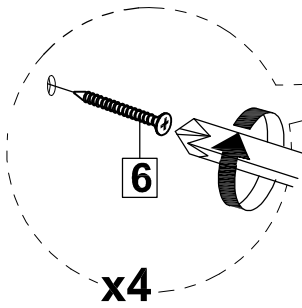
STEP 26



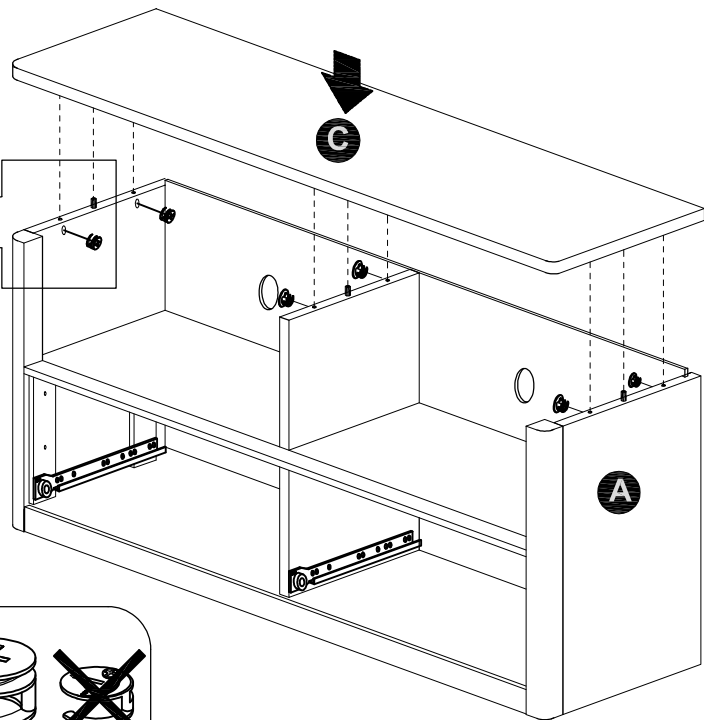
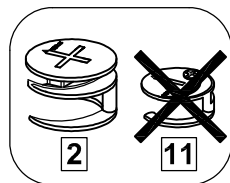
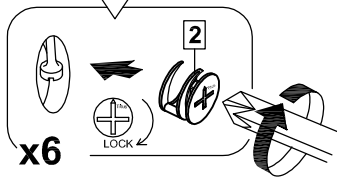
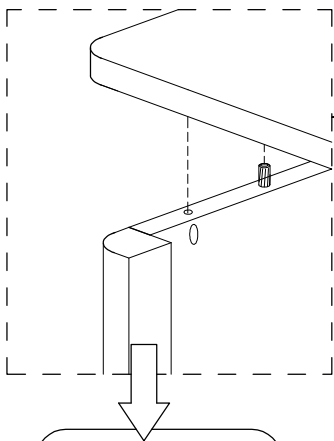
MODEL NAME:

ET 5512-00

STEP 27



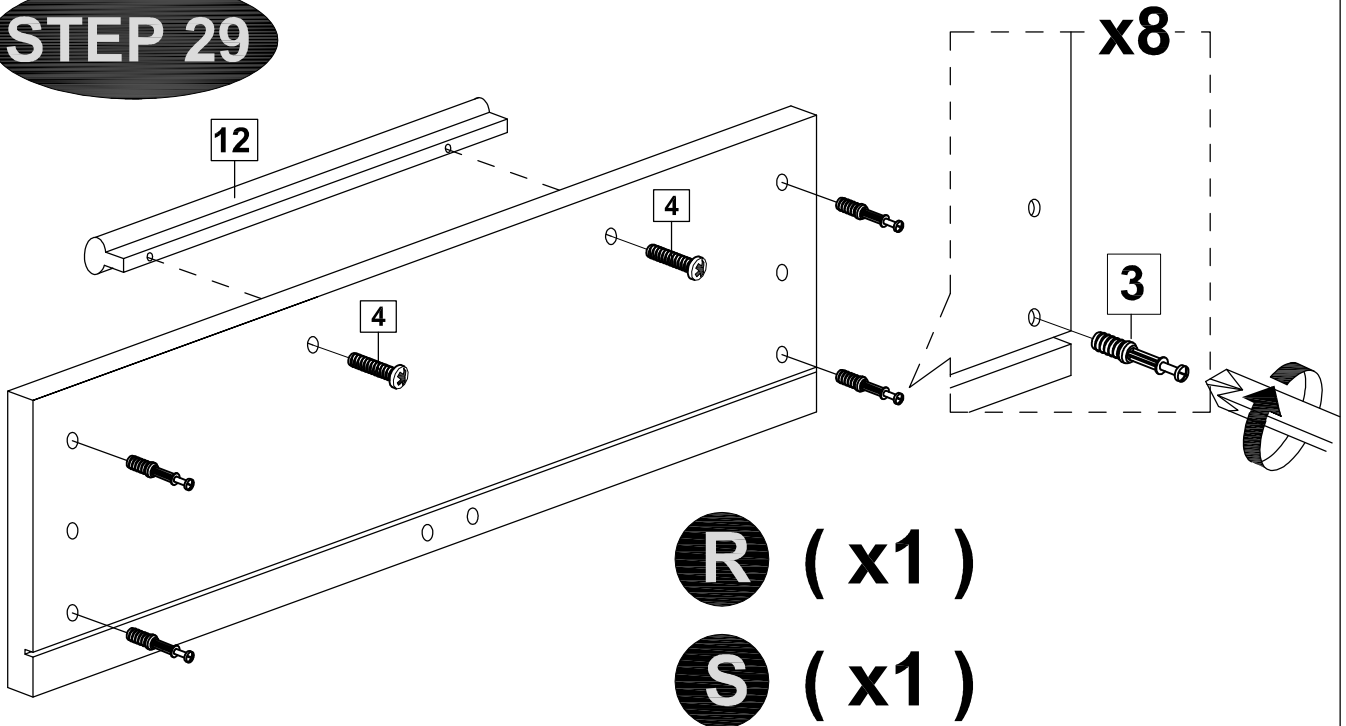
STEP 28



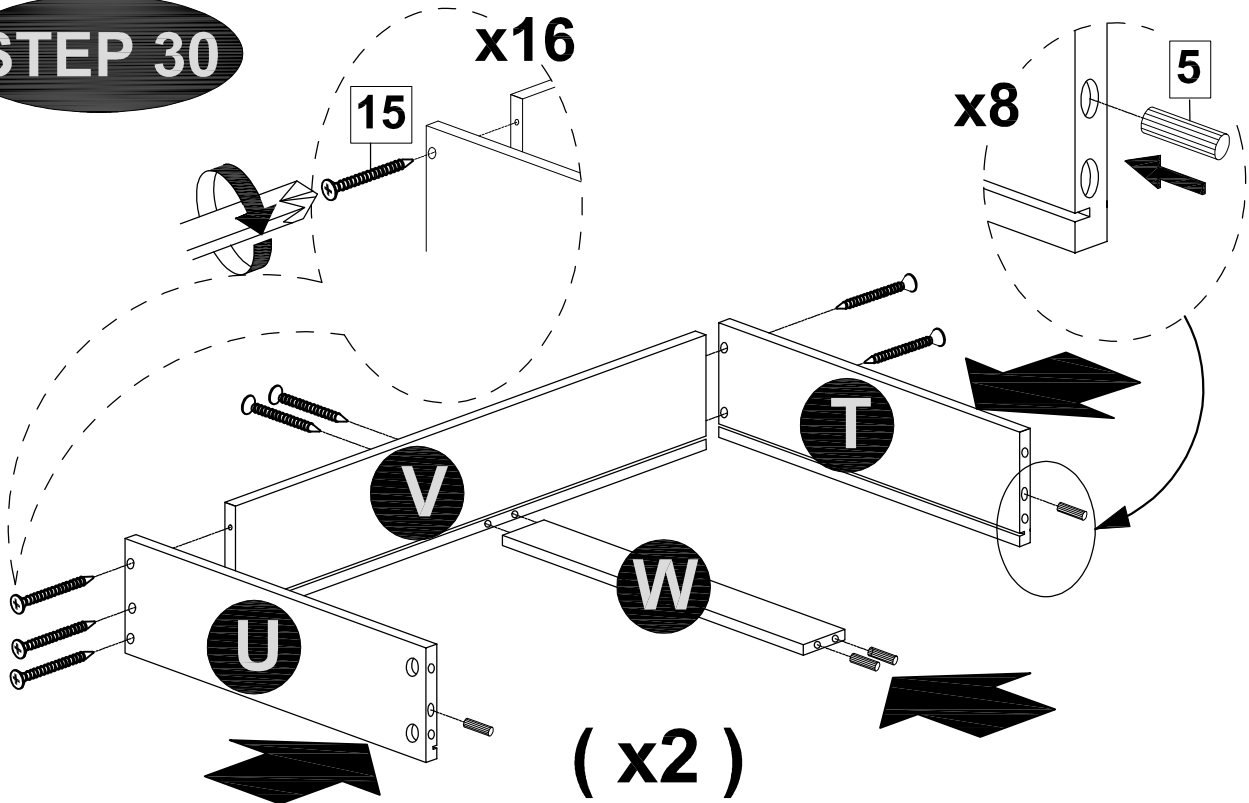
MODEL NAME:

ET 5512-00

STEP 29



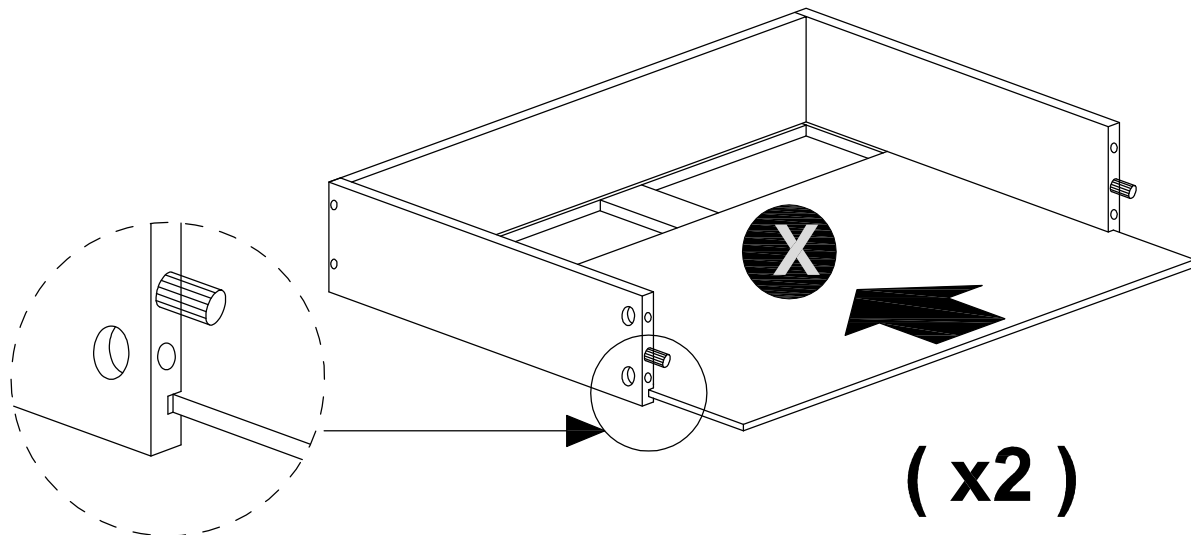
STEP 30



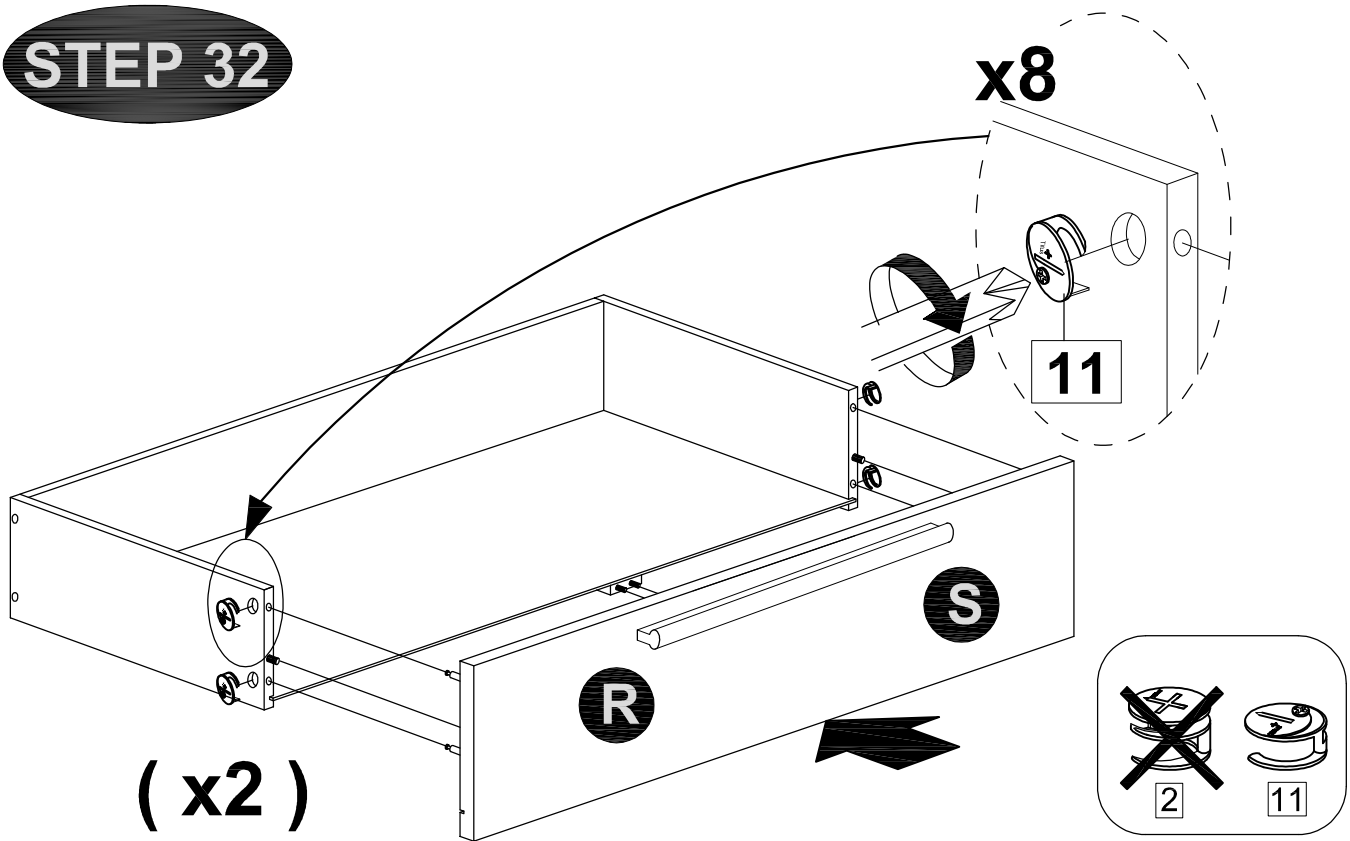
MODEL NAME:

ET 5512-00

STEP 31



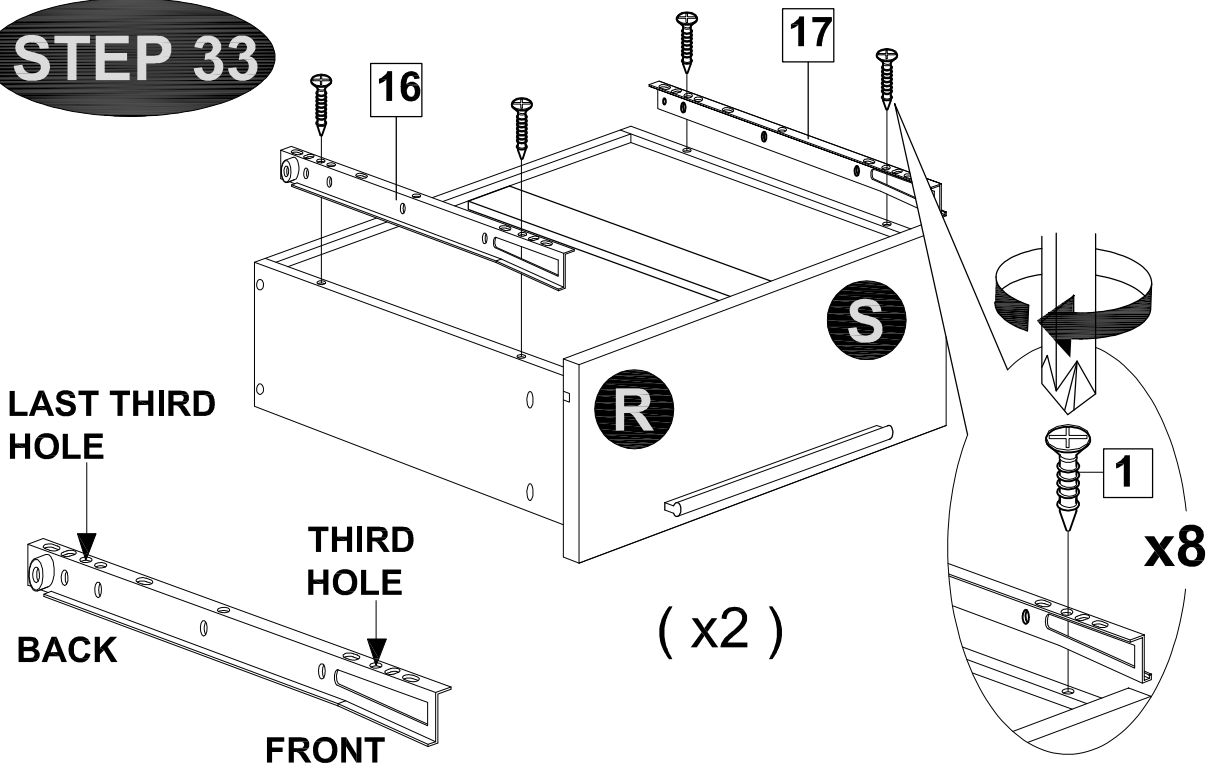
STEP 32



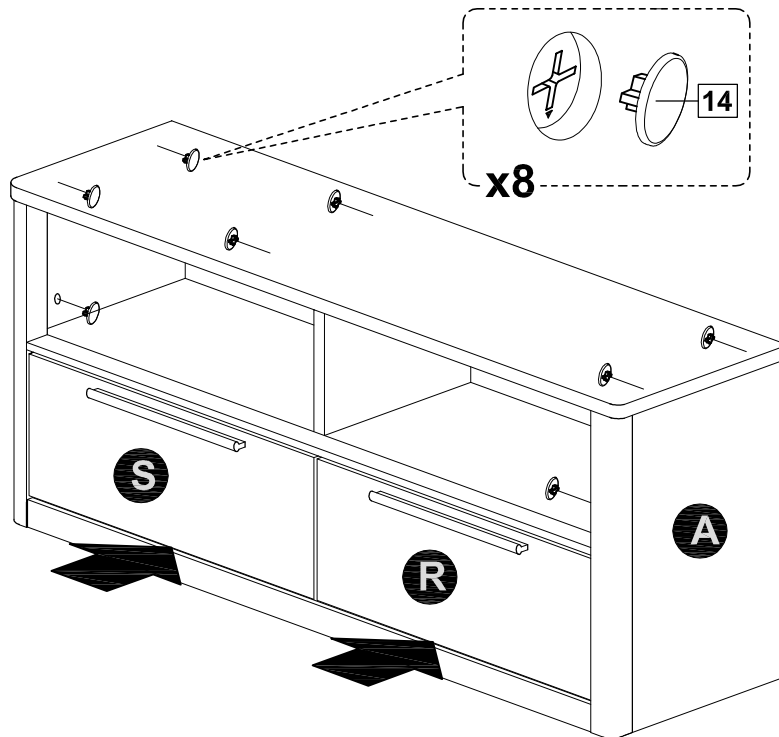
MODEL NAME:

ET 5512-00

STEP 33



STEP 34

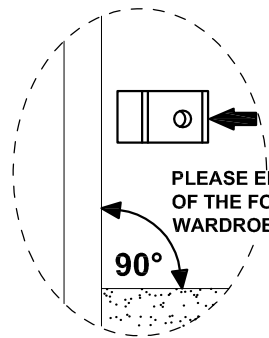
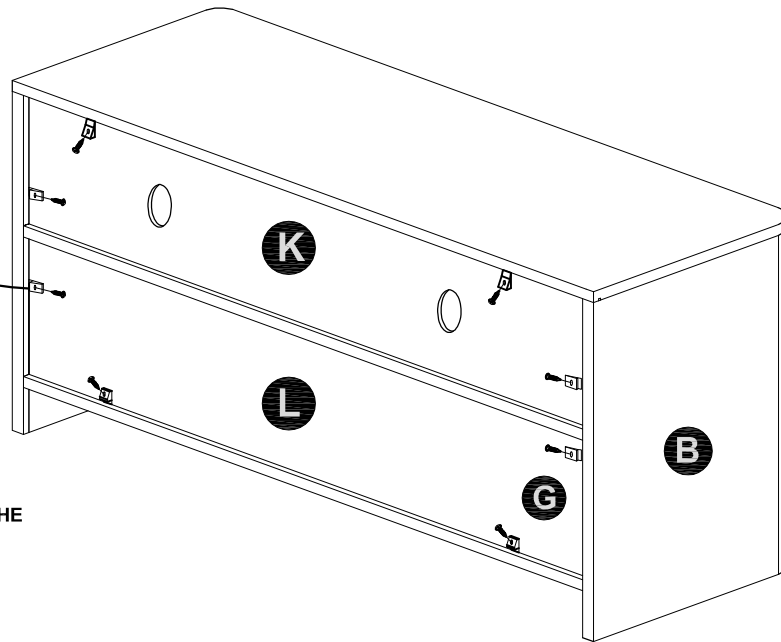
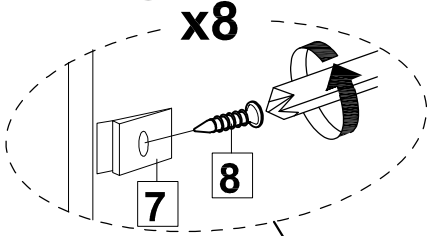


MODEL NAME:

ET 5512-00

STEP 35

x8



STEP 36

