

# ASSEMBLY INSTRUCTION

## 13905 CASPIA HEADBOARD QUEEN

Read instructions carefully. See furniture and hardware part list on the right for guidance.


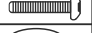



Have all parts ready before assembly. Place all wooden furniture parts on a clean and flat soft surface to prevent scratching.

Before you start, here are some words of caution:

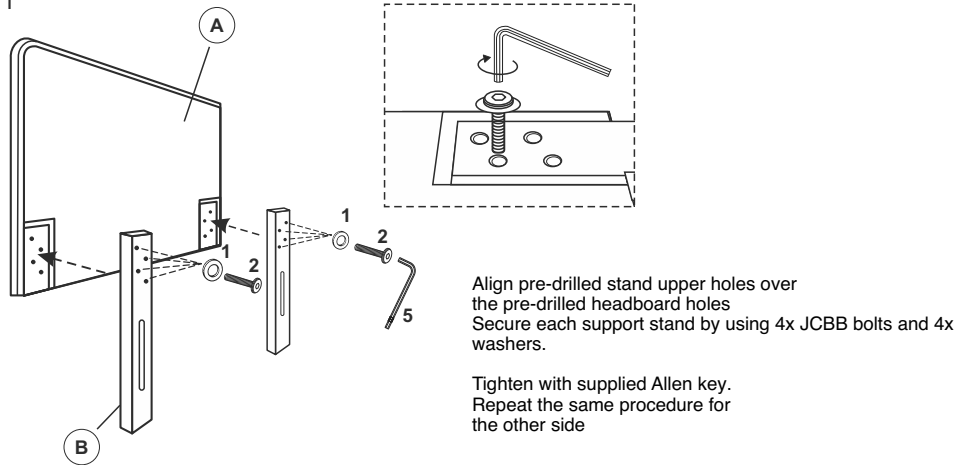
1. Do not FULLY – TIGHTEN nuts and bolts until all nuts and bolts are partially tightened.
  2. Do not FULLY – TIGHTEN nuts and bolts to avoid causing damage to the threading.
- Keep all hardware parts out of reach of children

NOTE: THE LIST AND QUANTITY SHOWN ARE FOR 1 UNIT ASSEMBLY.

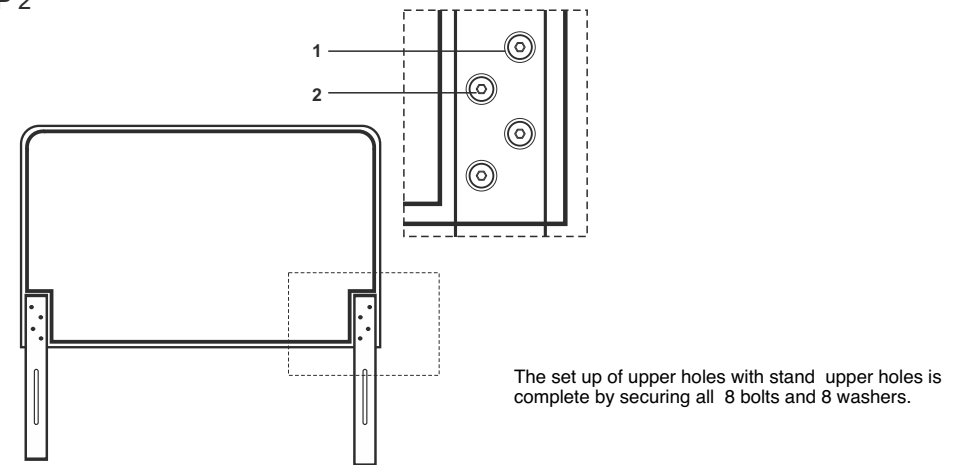
FURNITURE PART LIST		
ITEM	DESCRIPTION	QTY
A	HEADBOARD	1
B	SUPPORT BOARD	1

HARDWARE PART LIST		
ITEM	DESCRIPTION	QTY
1	M8 FLAT WASHER 	8 PCS
2	JCBB BOLT M8 x 30mm 	8 PCS
3	M8 FLAT WASHER 	2 PCS
4	JCBB BOLT M8 x 60mm 	2 PCS
5	M5 ALLEN KEY (BALL SHAPE) 	1 PC

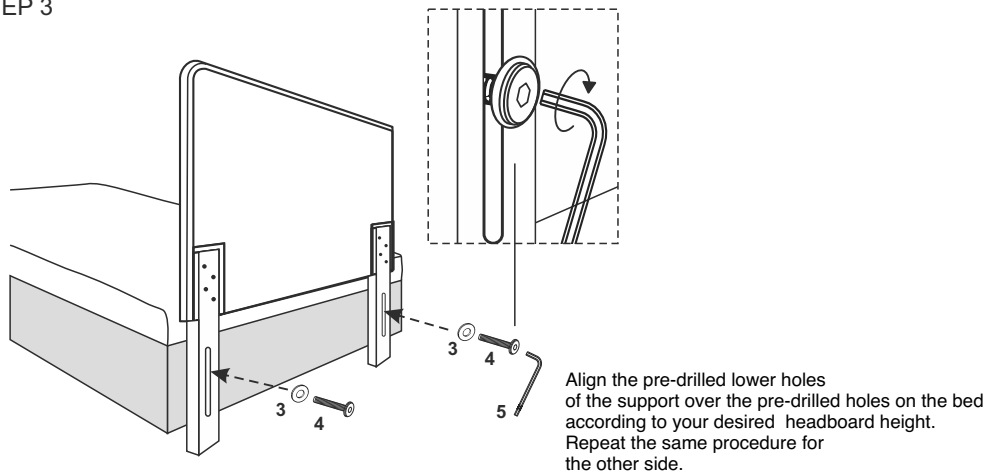
### STEP 1



### STEP 2



### STEP 3



### STEP 4

