



# ASSEMBLY INSTRUCTION




ITEM NUMBER : B7800-1 & B7800-11  
 DESCRIPTION : DRESSER & MIRROR

Thank you for purchasing this quality product. Be sure to check all packing material carefully for small parts which may have loose inside the carton during shipment. Identify and count all parts and compare with the parts list below.


**(BOX 2)  
 BOX OF MIRROR**

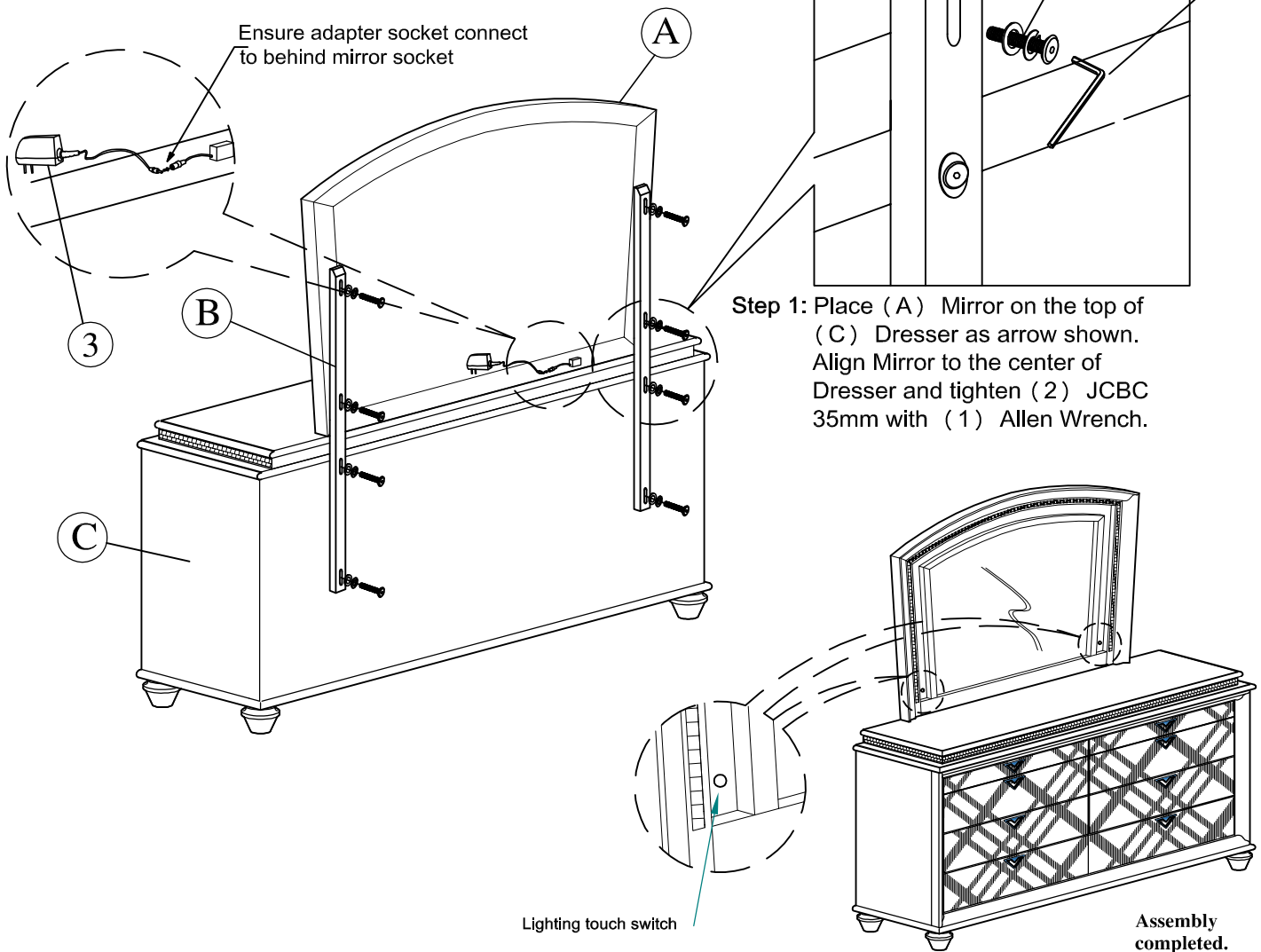
NO	DRAWING	DESCRIPTION	QTY
A		Mirror	1pc
B		Mirror Support	2pcs

**(BOX 2)  
 HARDWARE LIST**

NO	DRAWING	DESCRIPTION	QTY
1		Allen key	1pc
2		JCBC 35mm	8pcs
3		AC/DC Adapter	1pc

**(BOX 1)  
 BOX OF DRESSER**

NO	DRAWING	DESCRIPTION	QTY
C		Dresser	1pc



**THE ANTI TIPPING HARDWARE IS LOCATED IN THE RIGHT SIDE FRONT DRAWER OF DRESSER**

NOTE : MUST TIGHTEN SCREW PERIODICALLY. WITH USE SCREW MAY BECOME LOOSE.  
 CHECK TIGHTNESS OF ALL SCREW EVERY 6-8 WEEKS.

**CLEANING INSTRUCTION**

After assembly , clean & polish the completed parts if necessary with softcloth and industrial recognized furniture polish