



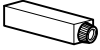
ASSEMBLY INSTRUCTION

ITEM NUMBER : B7300-1

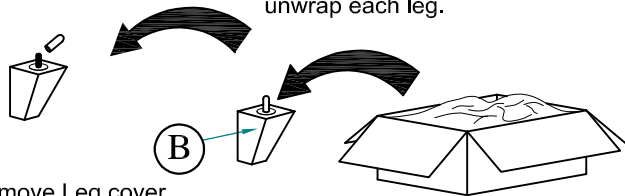
DESCRIPTION : DRESSER

Thank you for purchasing this quality product. Be sure to check all packing material carefully for small parts which may have loose inside the carton during shipment. Identify and count all parts and compare with the parts list below.

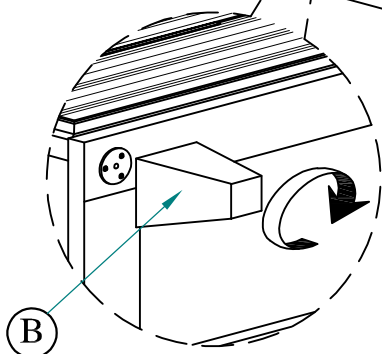
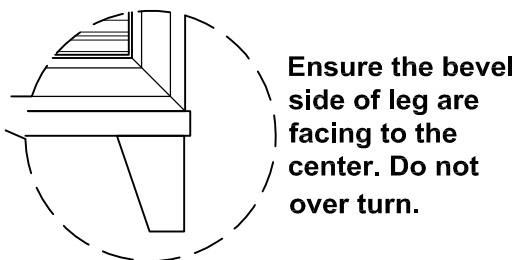
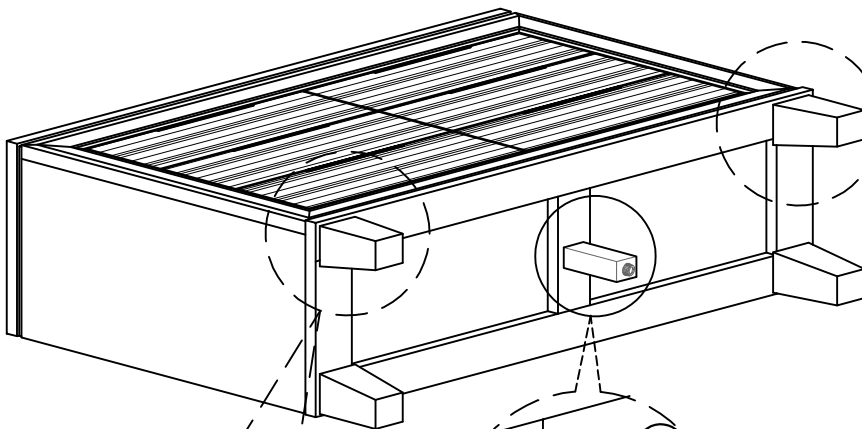
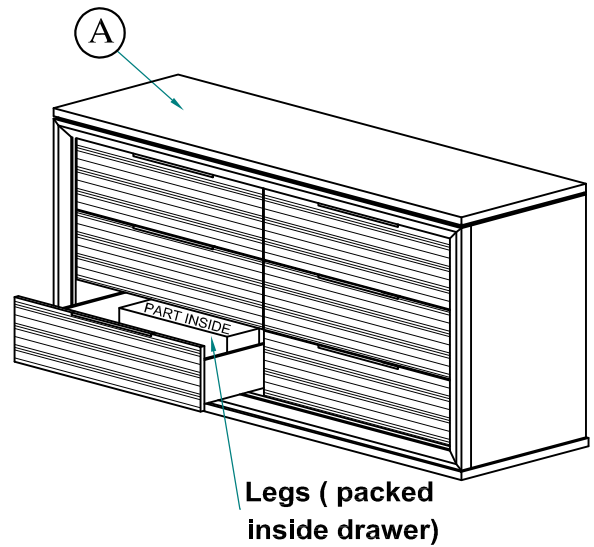
PART LIST#

NO	DRAWING	DESCRIPTION	QTY
A		Dresser	1pc
B		Leg	4pcs
C		Center Leg	1pc

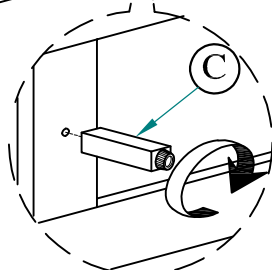
Remove Leg carton located in the drawer of the case good. Remove and unwrap each leg.



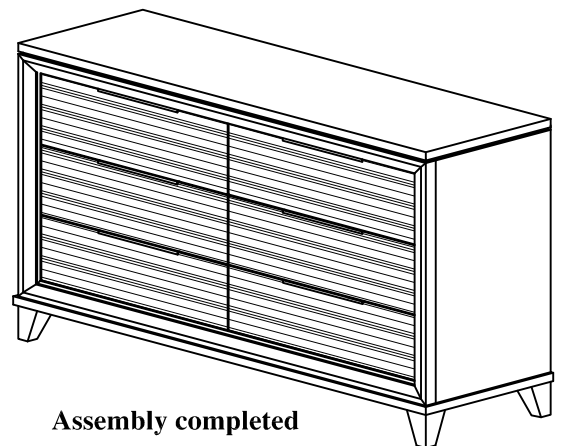
Remove Leg cover before assemble.



Step 1: Secure the (B) Leg to the bottom of (A) Dresser as the diagram shown.



Step 2 : Secure the (C) Center Leg to the bottom of (A) Dresser as the diagram shown.



Assembly completed

THE HARDWARE IS LOCATED IN THE PACKING ITEM

THE ANTI TIPPING HARDWARE IS LOCATED IN THE 1ST RIGHT SIDE FRONT DRAWER OF DRESSER

NOTE : MUST TIGHTEN SCREW PERIODICALLY. WITH USE SCREW MAY BECOME LOOSE. CHECK TIGHTNESS OF ALL SCREW EVERY 6-8 WEEKS.

CLEANING INSTRUCTION

After assembly , clean & polish the completed parts if necessary with softcloth and industrial recognized furniture polish

**(BOX OF DRESSER)
HARDWARE LIST (ANTI TIPPING)**

NO	DRAWING	DESCRIPTION	QTY
1		Bracket	2pcs
2		Tie Wrap	1pc
3		Screw (Long)	1pc
4		Screw (Short)	1pc

