

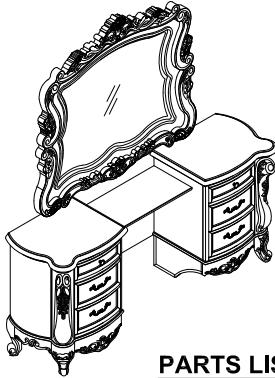
ASSEMBLY INSTRUCTION

ITEM#: 90742MR/90741L/90741R

DESCRIPTION: VANITY MIRROR, BACK, SHELF PANEL/
VANITY DESK LEFT / VANITY DESK RIGHT

Thank you for purchasing this quality product. Be sure to check all packing material carefully for small parts which may have come loose inside the carton during shipment. Separate, identify and count all parts and metal hardware. Compare with parts list to be sure all parts are present. If any part(s) are missing or damaged, please contact your local furniture dealer. For efficient and speedy service, please indicate the model number and code letter of part(s) needed.

*** Do not fully tighten screws until fully assembled ***

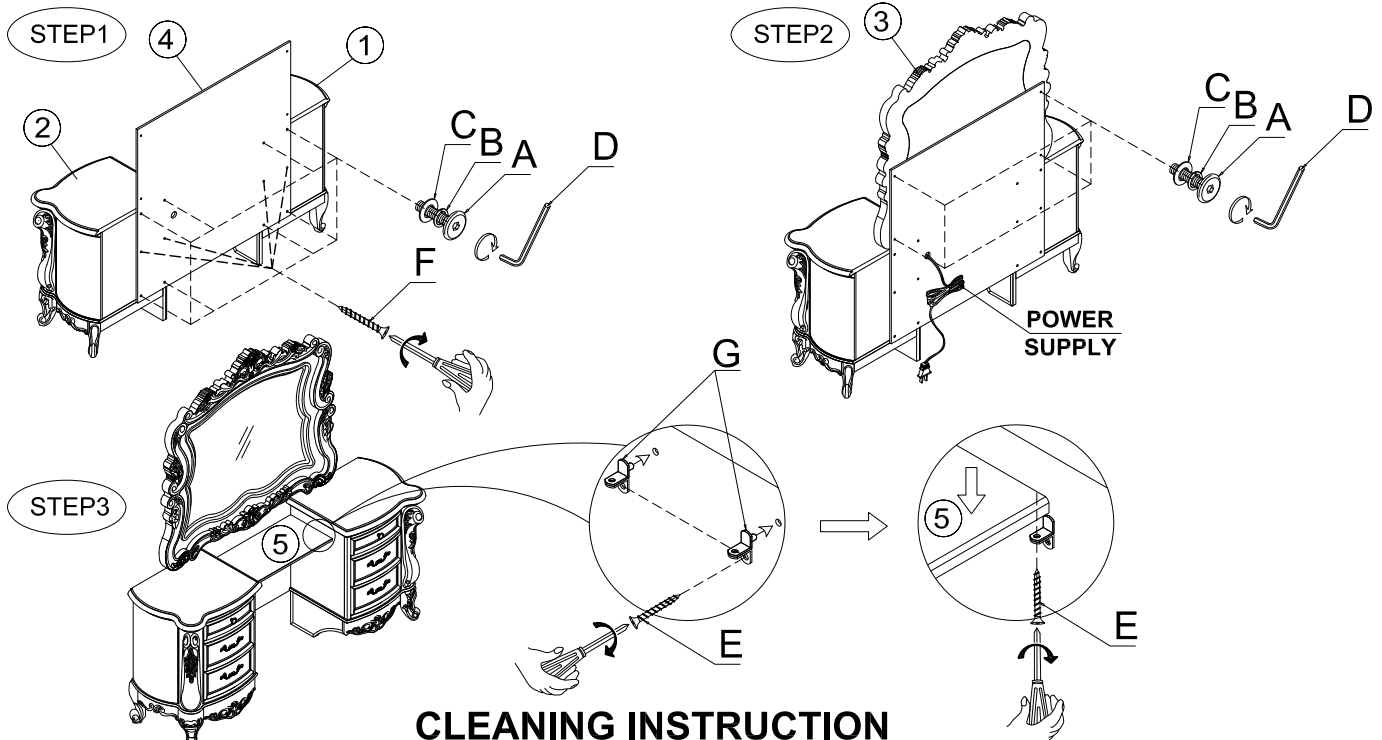


HARDWARE LIST

NO.	Drawing	Description	Q'ty
A		Bolt (Φ1/4"x1-1/4")	12pcs
B		Spring washer (Ø1/4")	12pcs
C		Flat washer (Ø1/4"x19mm)	12pcs
D		Allen wrench (4mm)	1pc
E		Screw Ø6x5/8"	8pcs
F		Screw Ø8x1"	4pcs
G		Shelf pin	4pcs

PARTS LIST:

VANITY DESK LEFT: 1PC	VANITY DESK RIGHT: 1PC	MIRROR: 1PC	BACK FRAME: 1PC	SHELF: 1PC



CLEANING INSTRUCTION

Clean the surface of the Vanity desk, Mirror and Shelf with furniture polish and a soft cloth.

Made in Vietnam