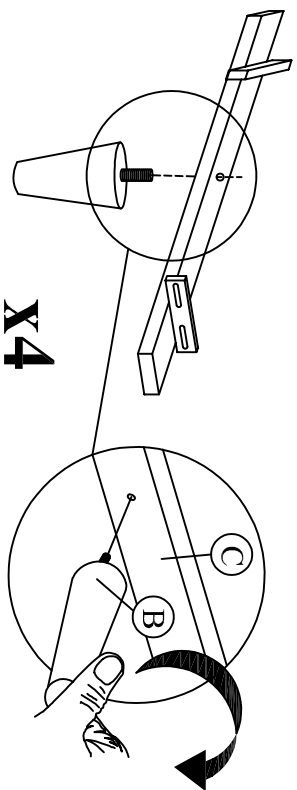


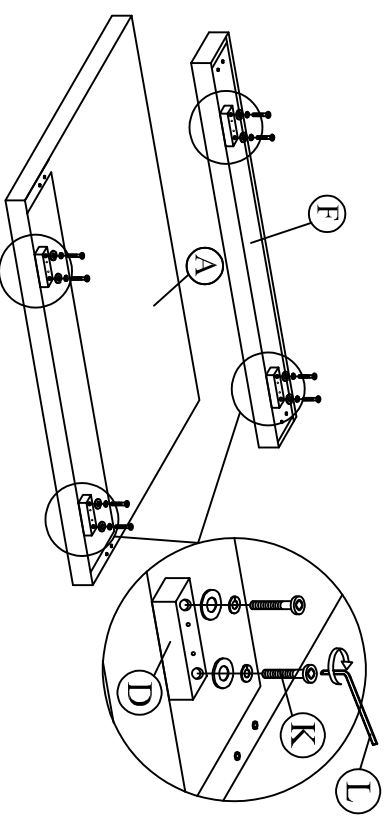
# ASSEMBLY INSTRUCTION

MODEL : #5095 (6')

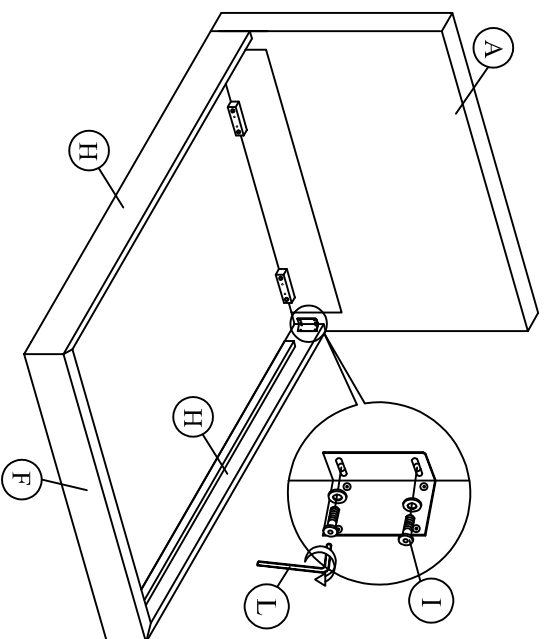
Step 1 : Install the legs (B) to leg holder (C).



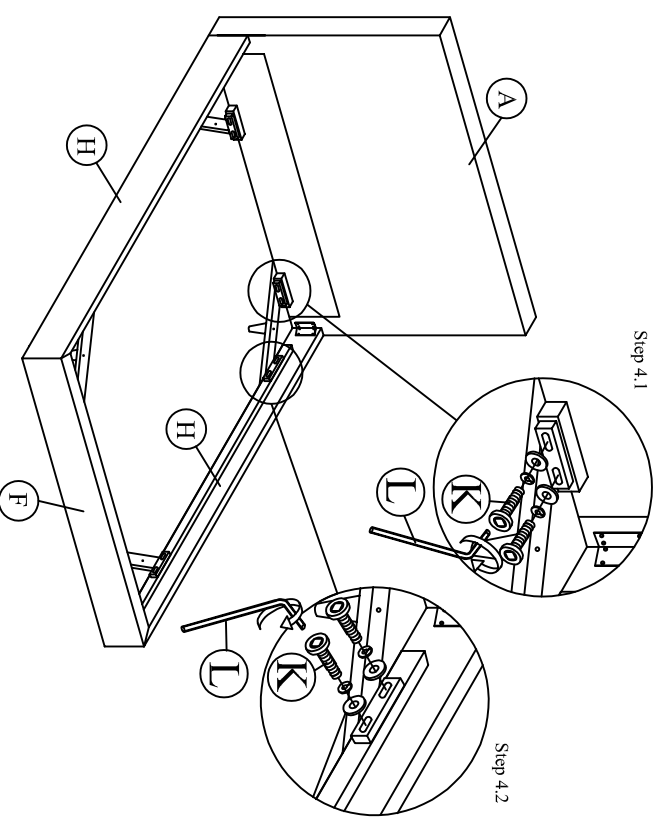
Step 2 : Attach Wooden Holder Support (D) to footboard (F) and headboard (A).



Step 3 : Attach side rail (H) to footboard (F) and headboard (A).



Step 4 : Attach leg holder (C) with leg (B) to the side rail (H), footboard (F) and headboard (A).

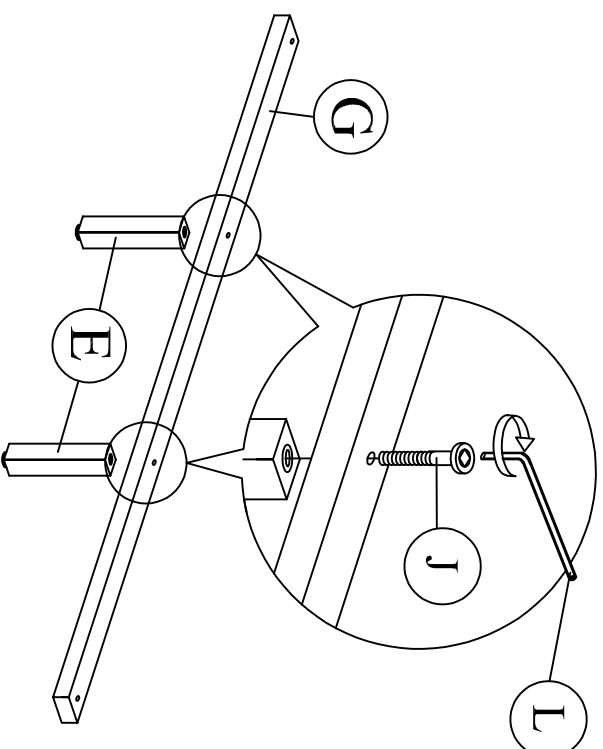


<b>(BOX 1) #5095-K-HB</b> BOX OF HEADBOARD		A	Headboard	1 pc
B		Legs 60 x 130(H)	4 pcs	
C		Leg Holder	4 pcs	
D		Wooden Holder Support	4 pcs	
E		Support Leg With Adjuster 180mm	8 pcs	
<b>(BOX 2) #5095-K-FB</b> BOX OF FOOTBOARD				
F		Footboard	1 pc	
G		Slat 1947mm	4 pcs	
<b>(BOX 3) #5095-KO-RA-11</b> BOX OF SIDE RAIL				
H		Side Rail	2 pcs	
<b>(BOX 1) #5095-K-HB</b> HARDWARE LIST				
I		ICRC M6 X 30 + Flat Washer	8 pcs	
J		ICRC M6 X 40	8 pcs	
K		ICRC M6 X 50 + Spring Washer + Flat Washer	24 pcs	
L		M4 x 65mm	1 pc	
M		CSK M4 x 32mm	8 pcs	

THE HARDWARE IS LOCATED IN THE PACKING ITEMS

PAGE 1 OF 2

Step 5 : Attach the support legs (E) to the slat (G) of the bed as shown.



**X4**

Step 6 : Affix the Slat (G) to the side rail support wood. Tighten all the 4 corner.

